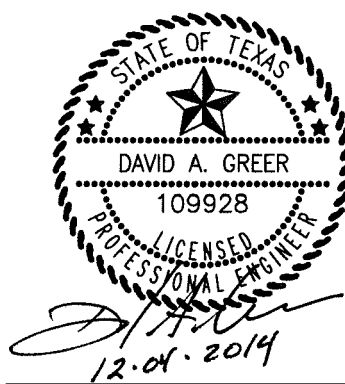


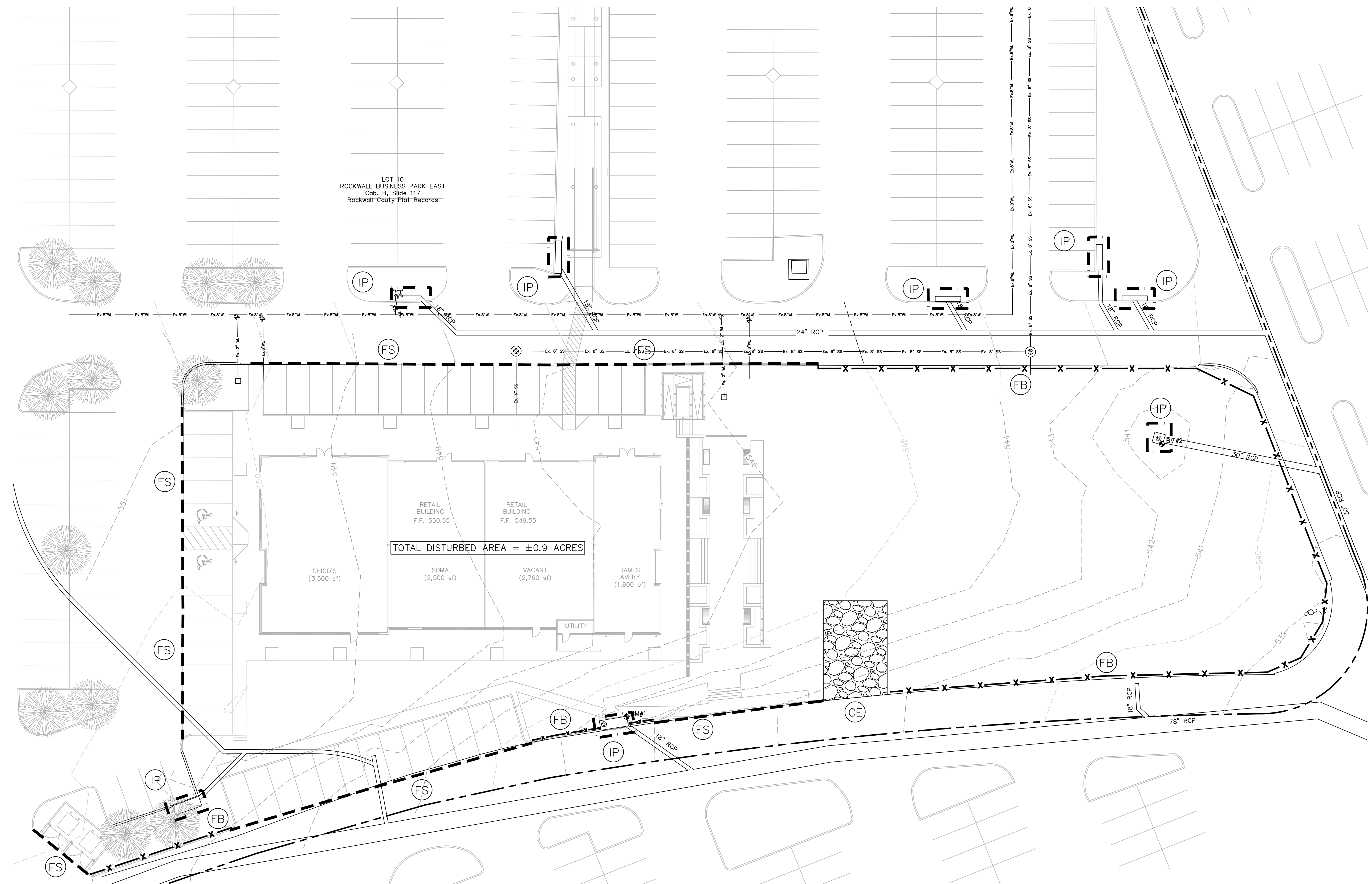
NOTE: INFORMATION ON THIS SHEET AND OTHER SHEETS THROUGHOUT THIS PLAN SET IS PART OF A UNIFIED DESIGN. THE CONTRACTOR SHALL NOT SEPARATE DRAWINGS FROM THE SET FOR DISTRIBUTION TO SPECIFIC DISCIPLINES. EACH SUBCONTRACTOR SHALL BE PROVIDED WITH ALL SHEETS WITHIN THIS PLAN SET.



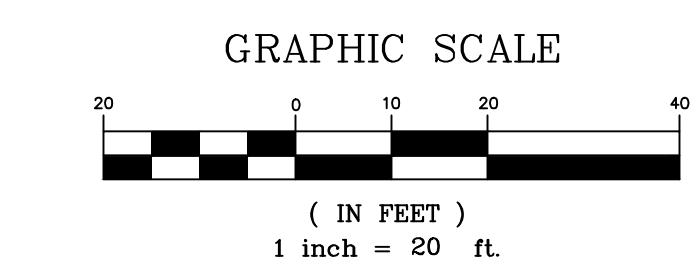
Design and construction documents are instruments of service and remain the property of Herschman Architects. The use of this design and these construction documents for purposes other than the specific project named herein is strictly prohibited without expressed written consent of Herschman Architects, Incorporated.

Date	Issue
9-26-2014	BD/PERMIT
11-07-2014	CITY COMMENTS
12-04-2014	CITY COMMENTS

Drawn By:
Project No.: 14389



TOTAL DISTURBED AREA = ±0.9 ACRES



LEGEND

- DIRECTION OF FLOW
- X FILTER BARRIER
- ⊙ FB FILTER BARRIER
- ▨ CE CONSTRUCTION ENTRANCE
- ⊙ WP CONCRETE WASHOUT PIT
- ⊙ IP INLET PROTECTION
- - - FS FILTER SOCK

NOTES

- CONTRACTOR SHALL REFERENCE GENERAL NOTES SHEET FOR ADDITIONAL INFORMATION. INFORMATION ON THE GENERAL NOTES SHEET IS PART OF A UNIFIED DESIGN AND IS PERTINENT TO THIS PLAN SHEET.

RECORD DRAWING

TO THE BEST OF OUR KNOWLEDGE, BANNISTER ENGINEERING, LLC, HEREBY STATES THAT THIS PLAN IS AS-BUILT. THE INFORMATION PROVIDED IS BASED ON SURVEYING AT THE SITE AND INFORMATION PROVIDED BY THE CONTRACTOR. IN THE EVENT THAT THE ORIGINAL DESIGN WAS MODIFIED IN THE FIELD WITHOUT THE ENGINEER'S KNOWLEDGE, THE SEAL OR SIGNATURE ON THIS DRAWING IS NOT INTENDED TO INDICATE THE ENGINEER'S APPROVAL OR ACCEPTANCE OF ANY SUCH DEVIATIONS FROM THE DESIGN.

DA Greer DATE: 09.25.15
DAVID A. GREER, P.E. 109928

ALL RESPONSIBILITY FOR ADEQUACY OF DESIGN REMAINS WITH THE DESIGN ENGINEER. THE CITY OF ROCKWALL, IN REVIEWING AND RELEASING PLANS FOR CONSTRUCTION, ASSUMES NO RESPONSIBILITY FOR ACCURACY OF DESIGN.

BANNISTER ENGINEERING
1696 Country Club Drive | Mansfield, TX 76063 | 817.842.2094 | 817.842.2095 fax
REGISTRATION # F-10599 (TEXAS)

EROSION CONTROL PLAN
RETAIL BUILDING
PLAZA AT ROCKWALL SHOPPING CENTER
INTERSTATE HIGHWAY 30
ROCKWALL, TX

HERSCHMAN ARCHITECTS INCORPORATED
25001 EMERY ROAD, SUITE 400
CLEVELAND, OH 44128
TEL (216) 223-3200
FAX (216) 223-3210
www.herschmanarchitects.com

C-6.1