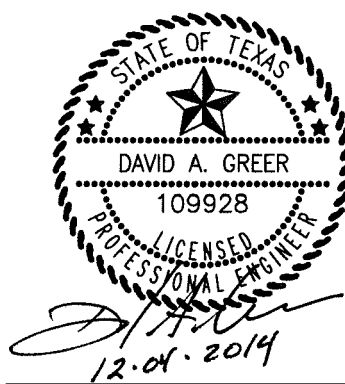


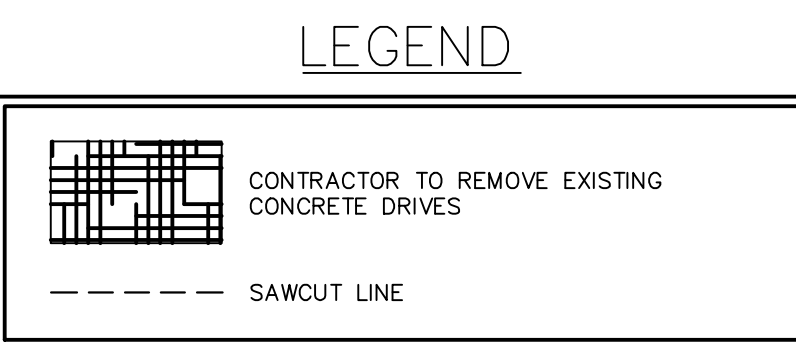
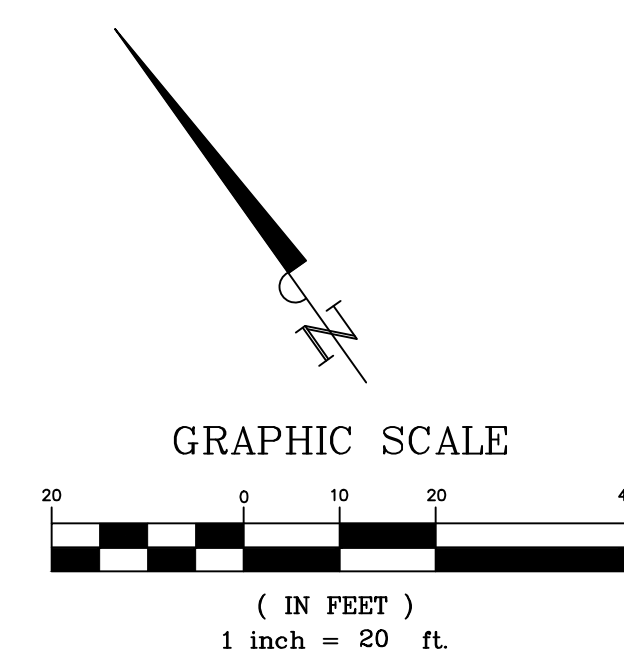
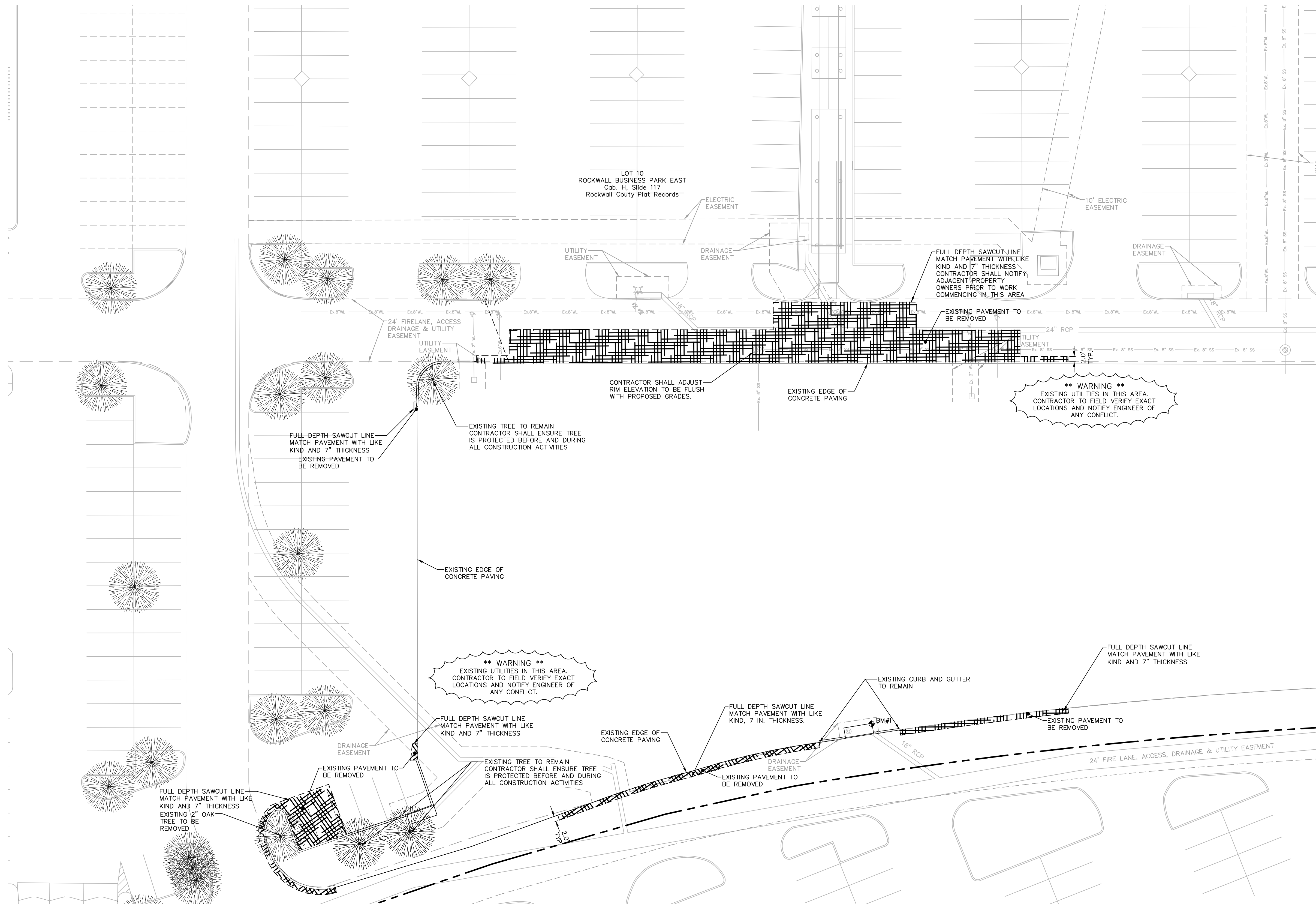
NOTE: INFORMATION ON THIS SHEET AND OTHER SHEETS THROUGHOUT THIS PLAN SET IS PART OF A UNIFIED DESIGN. THE CONTRACTOR SHALL NOT SEPARATE DRAWINGS FROM THE SET FOR DISTRIBUTION TO SPECIFIC DISCIPLINES. EACH SUBCONTRACTOR SHALL BE PROVIDED WITH ALL SHEETS WITHIN THIS PLAN SET.



Design and construction documents as instruments of service are given in confidence and remain the property of Herschman Architects. The use of this design and these construction documents for purposes other than the specific project named herein is strictly prohibited without expressed written consent of Herschman Architects, Incorporated.

Date	Issue
9-26-2014	BD/PERMIT
11-07-2014	CITY COMMENTS
12-04-2014	CITY COMMENTS

Drawn By: _____
Project No.: 14389



- NOTES**
- CONTRACTOR IS RESPONSIBLE TO REMOVE ITEMS INDICATED ON THIS PLAN. THIS INCLUDES DEMOLISHING AND REMOVAL OF INDICATED IMPROVEMENTS. ITEMS TO BE DEMOLISHED INCLUDE, BUT ARE NOT LIMITED TO, BUILDINGS, STRUCTURES, PAVEMENTS, UTILITIES, EQUIPMENT, AND MISCELLANEOUS ITEMS. CONTRACTOR IS RESPONSIBLE TO FAMILIARIZE WITH THE SITE PRIOR TO BIDDING THE PROJECT TO FIELD VERIFY EXTENTS OF THE WORK. CONTACT THE ARCHITECT TO MAKE ARRANGEMENTS FOR VISITING THE SITE.
 - REFER TO SHEET C-1.1 FOR ADDITIONAL NOTES.
 - REFER TO PAVING, STORM DRAIN, UTILITY, AND LANDSCAPE PLANS FOR ADDITIONAL DETAILS.
 - CONTRACTOR SHALL HAUL OFF AND DISPOSE IN A LAWFUL MANNER ALL DEBRIS AND TRASH GENERATED FROM REMOVAL OF BUILDINGS, PAVEMENT, UTILITIES, EQUIPMENT, TREES, AND ETC.
 - FOR ALL UTILITIES TO BE ABANDONED, CONTRACTOR SHALL COORDINATE WITH THE APPROPRIATE UTILITY OWNER AND WHERE POSSIBLE CAP THE UTILITY AT THE PROPERTY LINE.
 - THE ENTIRE SITE IS TO BE SOEDED. NO HYDRO-MULCH AND NO OPTION FOR THE GENERAL CONTRACTOR TO PROVIDED ONE OR THE OTHER.
 - SEE LANDSCAPE PLAN FOR TREES TO BE REMOVED.
- ALL RESPONSIBILITY FOR ADEQUACY OF DESIGN REMAINS WITH THE DESIGN ENGINEER. THE CITY OF ROCKWALL, IN REVIEWING AND RELEASING PLANS FOR CONSTRUCTION, ASSUMES NO RESPONSIBILITY FOR ACCURACY OF DESIGN.

RECORD DRAWING
TO THE BEST OF OUR KNOWLEDGE, BANNISTER ENGINEERING, LLC, HEREBY STATES THAT THIS PLAN IS AS-BUILT. THE INFORMATION PROVIDED IS BASED ON SURVEYING AT THE SITE AND INFORMATION PROVIDED BY THE CONTRACTOR. IN THE EVENT THAT THE ORIGINAL DESIGN WAS MODIFIED IN THE FIELD WITHOUT THE ENGINEER'S KNOWLEDGE, THE SEAL OR SIGNATURE ON THIS DRAWING IS NOT INTENDED TO INDICATE THE ENGINEER'S APPROVAL OR ACCEPTANCE OF ANY SUCH DEVIATIONS FROM THE DESIGN.
DAVID A. GREER DATE: 09.25.15
DAVID A. GREER, P.E. 109928

BENCHMARKS

BM#1: BRASS CAP ON CURB INLET N: 7018174.91 E: 2597215.39	ELEV.=543.92
BM#2: BRASS DISK ON AREA INLET N: 7018140.75 E: 2597447.86	ELEV.=541.39



Know what's below.
Call before you dig.
(@ least 48 hours prior to digging)

BANNISTER ENGINEERING
1696 Country Club Drive | Mansfield, TX 76063 | 817.842.2094 | 817.842.2095 fax
REGISTRATION # F-10599 (TEXAS)

DEMOLITION PLAN
RETAIL BUILDING
PLAZA AT ROCKWALL SHOPPING CENTER
INTERSTATE HIGHWAY 30
ROCKWALL, TX



25001 EMERY ROAD, SUITE 400
CLEVELAND, OH 44128
TEL (216) 223-3200
FAX (216) 223-3210
www.herschmanarchitects.com

C-1.2