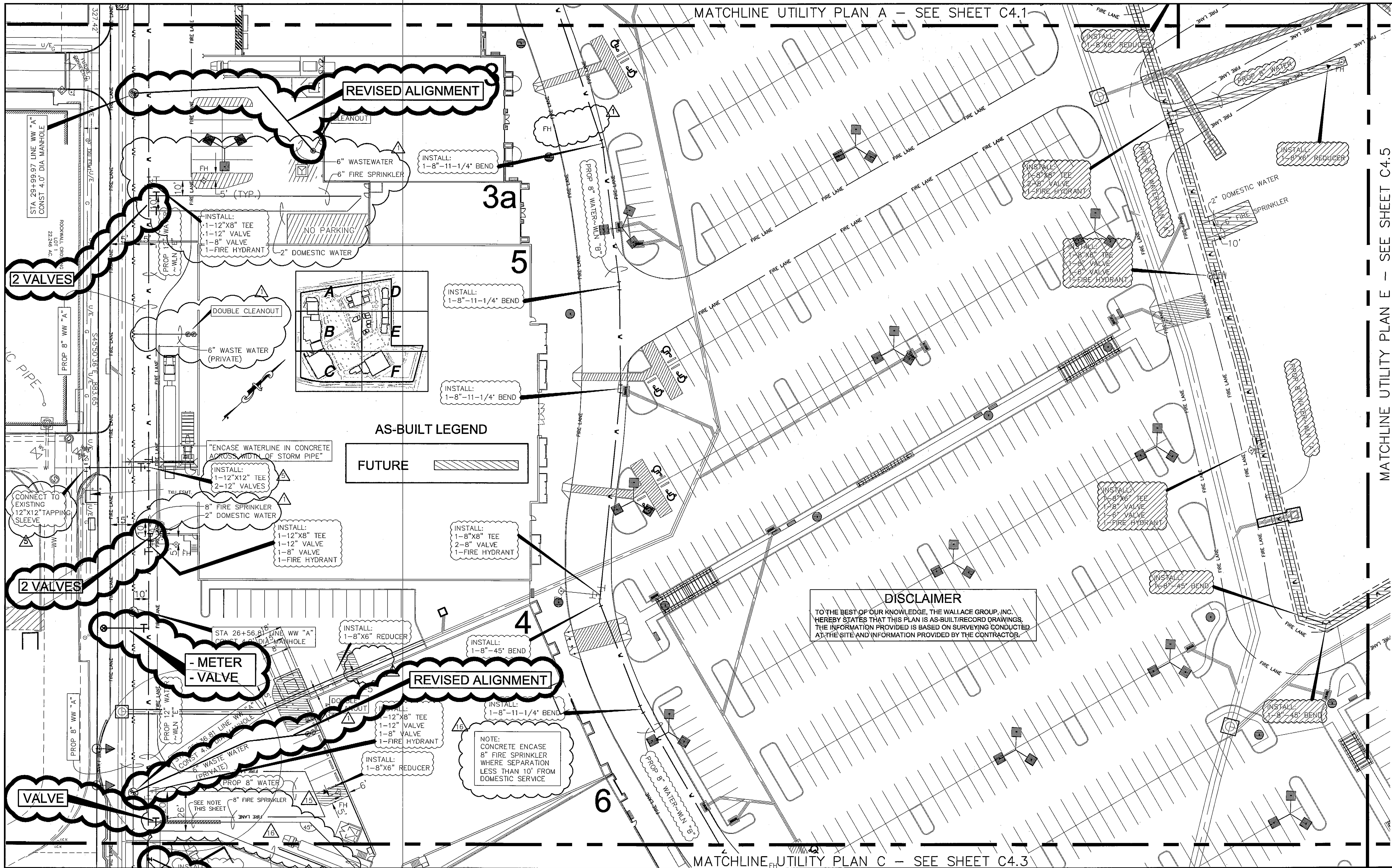


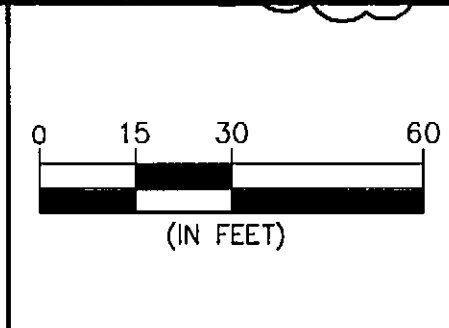
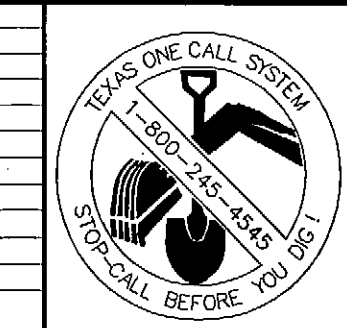
MATCHLINE UTILITY PLAN A - SEE SHEET C4.1

MATCHLINE UTILITY PLAN E - SEE SHEET C4.5



DISCLAIMER
 TO THE BEST OF OUR KNOWLEDGE, THE WALLACE GROUP, INC. HEREBY STATES THAT THIS PLAN IS AS-BUILT/RECORD DRAWINGS. THE INFORMATION PROVIDED IS BASED ON SURVEYS CONDUCTED AT THE SITE AND INFORMATION PROVIDED BY THE CONTRACTOR.

REV	DATE	BY	DESCRIPTION
0-8-07	MM		Revised 8\" Fire line and 2\" Domestic Service to Staples
2-25-07	RS3		Revised 8\" Fire line and 2\" Domestic Service to Staples
3-26-07	RS3		Revised 12\" water connection on west side
3-19-07	RS3		Revised utility service connections & removed Fire hydrants



DESIGNED: _____
 DRAWN: _____
 CHECKED: _____



"THE SEAL APPEARING ON THIS DOCUMENT WAS AUTHORIZED BY MATTHEW D. MORGAN, P.E. # 96829 ON THE DATE SHOWN ON THE DAYSTAMP. ALTERATION OF A SEALED DOCUMENT WITHOUT PROPER NOTIFICATION TO THE RESPONSIBLE ENGINEER IS AN OFFENSE UNDER THE TEXAS ENGINEERING PRACTICE ACT"

3/25/08 *Matthew D. Morgan*
 DATE NAME

ENGINEERS ARCHITECTS

THE WALLACE GROUP INC.

SURVEYORS PLANNERS

THE WOODMONT COMPANY
 PLAZA AT ROCKWALL
 UTILITY PLAN B

SHEET 23
C4.2
 OF 56 SHEETS