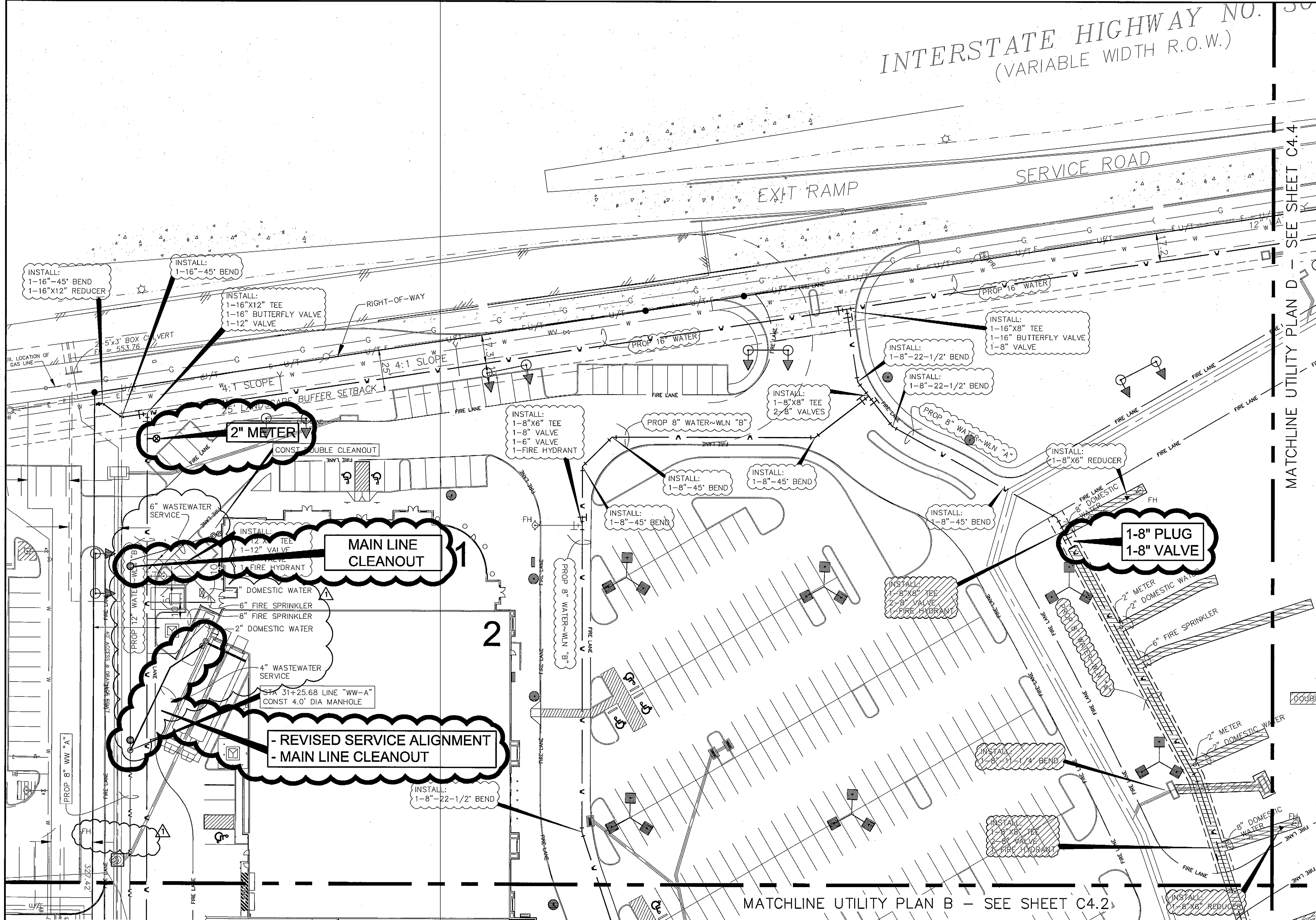
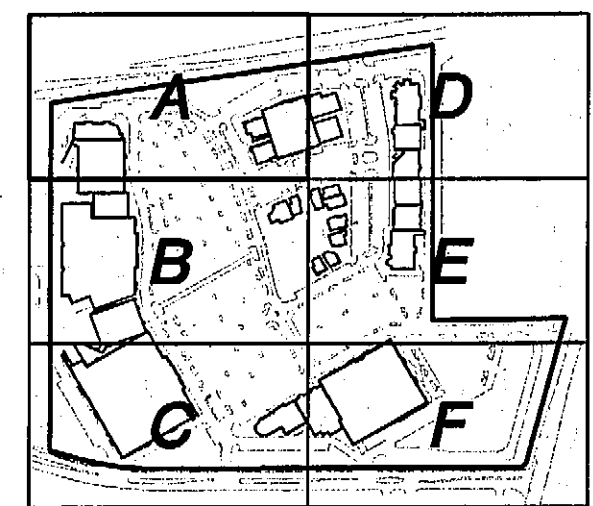
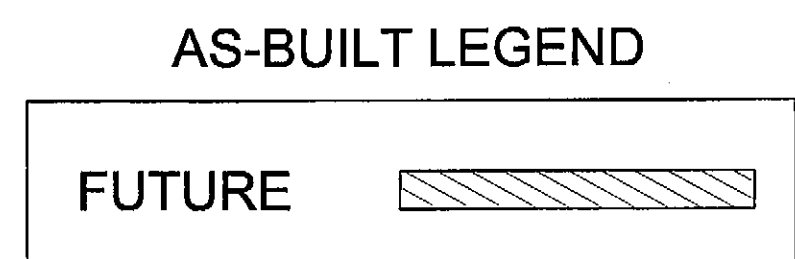


INTERSTATE HIGHWAY NO. 30  
(VARIABLE WIDTH R.O.W.)

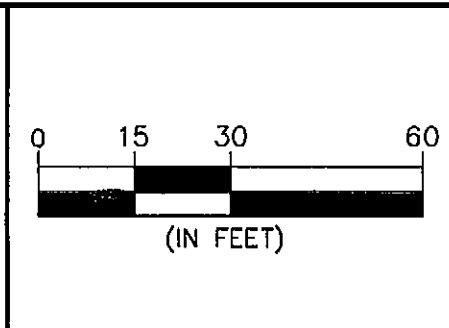
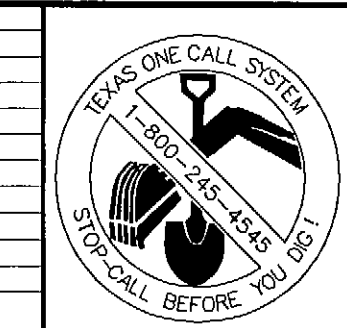


- GENERAL NOTES:
1. ALL WATER LINES TO BE CLASS 200
  2. INSTALL BLUE EMS DISK ON WATER LINE AT EVERY CHANGE IN DIRECTION (BENDS, TEES, VALVES, FH & SERVICES)
  3. INSTALL GREEN EMS DISK ON SANITARY SEWER LINE AT EVERY CHANGE IN DIRECTION (MANHOLE, CLEANOUT & SERVICE)
  4. ALL FIRE HYDRANTS TO HAVE 5' CLEARANCE AROUND (NOT INCLUDING ADDITIONAL 2' CLEARANCE AT 18' PARKING SPACES)

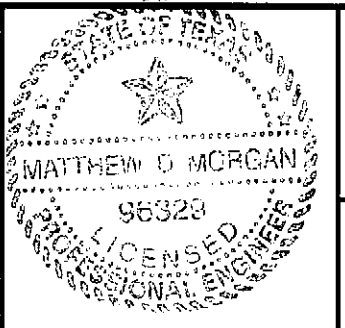


**DISCLAIMER**  
TO THE BEST OF OUR KNOWLEDGE, THE WALLACE GROUP, INC. HEREBY STATES THAT THIS PLAN IS AS-BUILT/RECORD DRAWINGS. THE INFORMATION PROVIDED IS BASED ON SURVEYING CONDUCTED AT THE SITE AND INFORMATION PROVIDED BY THE CONTRACTOR.

REV	DATE	BY	DESCRIPTION
2-19-07		RSJ	Revised utility service connections & removed fire hydrants



DESIGNED:  
DRAWN:  
CHECKED:



"THE SEAL APPEARING ON THIS DOCUMENT WAS AUTHORIZED BY MATTHEW D. MORGAN, P.E. # 98329 ON THE DATE SHOWN ON THE DATSTAMP. ALTERATION OF A SEALED DOCUMENT WITHOUT PROPER NOTIFICATION TO THE RESPONSIBLE ENGINEER IS AN OFFENSE UNDER THE TEXAS ENGINEERING PRACTICE ACT"

3/25/08 *Matthew D. Morgan*  
DATE NAME

ENGINEERS ARCHITECTS

**THE WALLACE GROUP INC.**

SURVEYORS PLANNERS

THE WOODMONT COMPANY  
PLAZA AT ROCKWALL  
UTILITY PLAN A

SHEET 22  
C4.1  
OF 56 SHEETS

G:\Projects\16325\Wing\AS-BUILT\16325-AB\_C40-C46-DT.dwg, UTIL\_A (C4.1), 3/25/2008 9:14:35 AM, rjs, Xerox\_Meyer1.pcl, 1:1