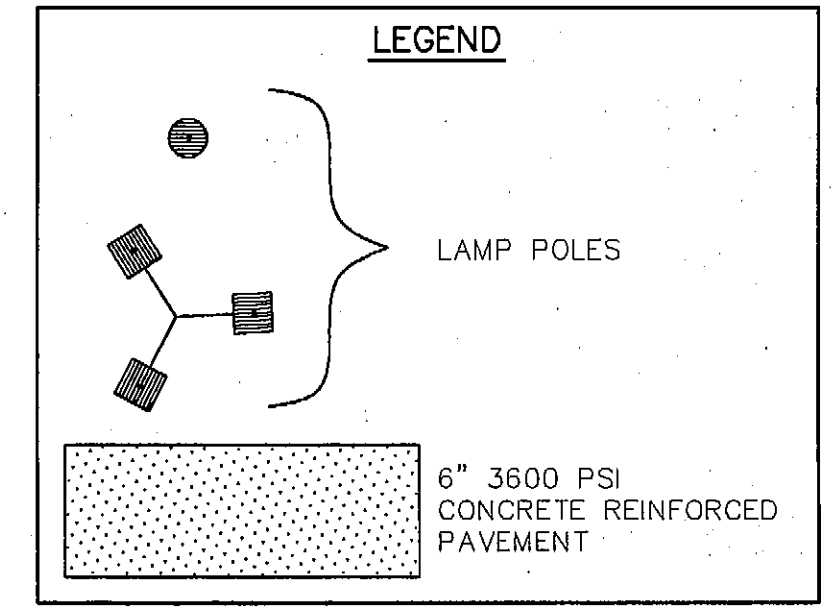
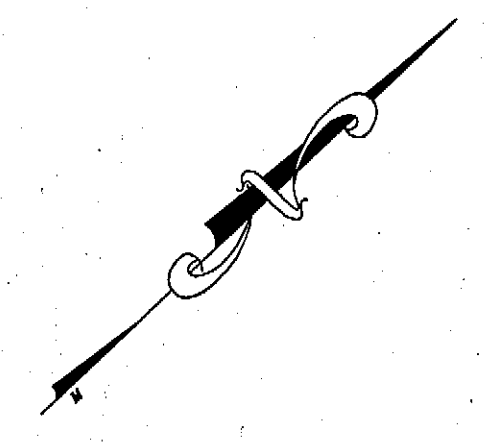
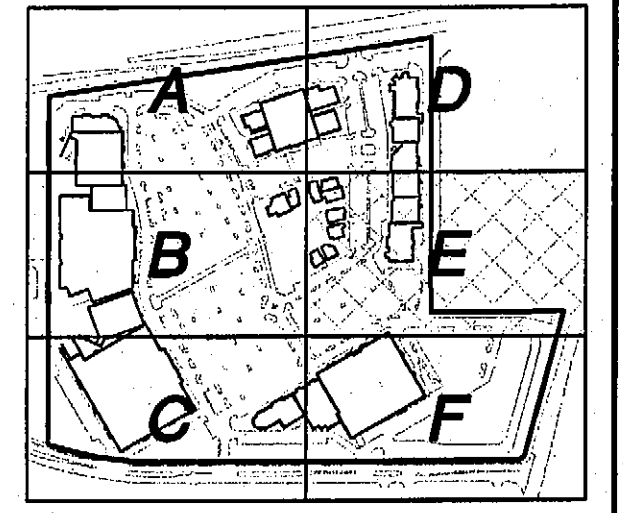
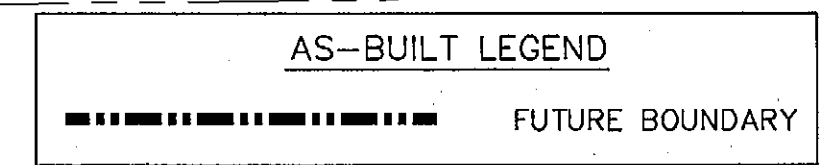


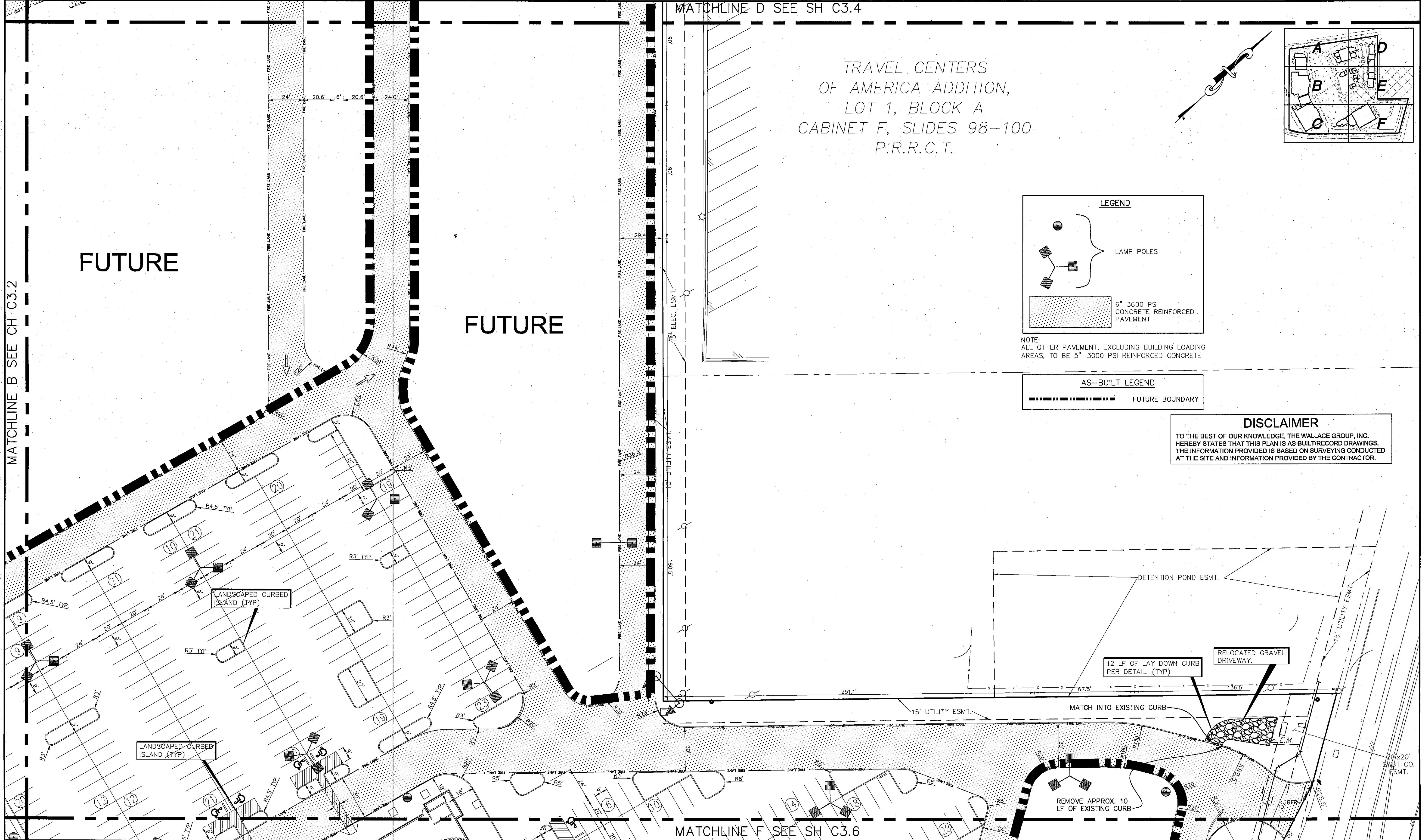
TRAVEL CENTERS
OF AMERICA ADDITION,
LOT 1, BLOCK A
CABINET F, SLIDES 98-100
P.R.R.C.T.



NOTE:
ALL OTHER PAVEMENT, EXCLUDING BUILDING LOADING
AREAS, TO BE 5"-3000 PSI REINFORCED CONCRETE



DISCLAIMER
TO THE BEST OF OUR KNOWLEDGE, THE WALLACE GROUP, INC.
HEREBY STATES THAT THIS PLAN IS AS-BUILT/RECORD DRAWINGS.
THE INFORMATION PROVIDED IS BASED ON SURVEYING CONDUCTED
AT THE SITE AND INFORMATION PROVIDED BY THE CONTRACTOR.

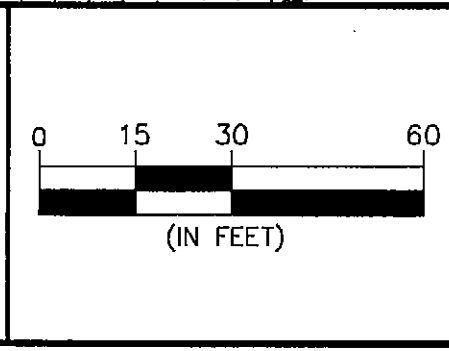
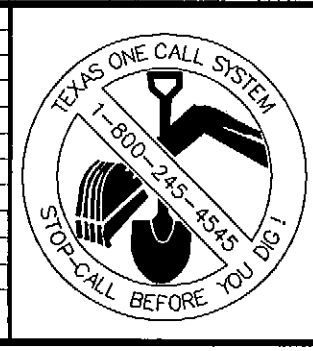


MATCHLINE B SEE CH C3.2

MATCHLINE D SEE SH C3.4

MATCHLINE F SEE SH C3.6

REV	DATE	BY	DESCRIPTION
12-12-07		MM	REVISED EAST ENTRANCE FROM SH 205
4-16-07		MM	REVISED VARIOUS DIMENSION CALCULAT AT ENTRIES AND BUILDINGS
3-19-07		MM	ADDED HATCHING FOR PAVEMENT SECTIONS



DESIGNED:
DRAWN:
CHECKED:

"THE SEAL APPEARING ON THIS DOCUMENT WAS AUTHORIZED BY
MATTHEW D. MORGAN, P.E. # 95328
ON THE DATE SHOWN ON THE DAYSTAMP.
ALTERATION OF A SEALED DOCUMENT WITHOUT PROPER NOTIFICATION TO THE RESPONSIBLE
ENGINEER IS AN OFFENSE UNDER THE TEXAS ENGINEERING PRACTICE ACT"

3/25/08 *Matthew D. Morgan*
DATE NAME

ENGINEERS ARCHITECTS
THE WALLACE GROUP INC.
SURVEYORS PLANNERS

THE WOODMONT COMPANY
PLAZA AT ROCKWALL
SITE PLAN E

SHEET 19
C3.5
OF 56 SHEETS