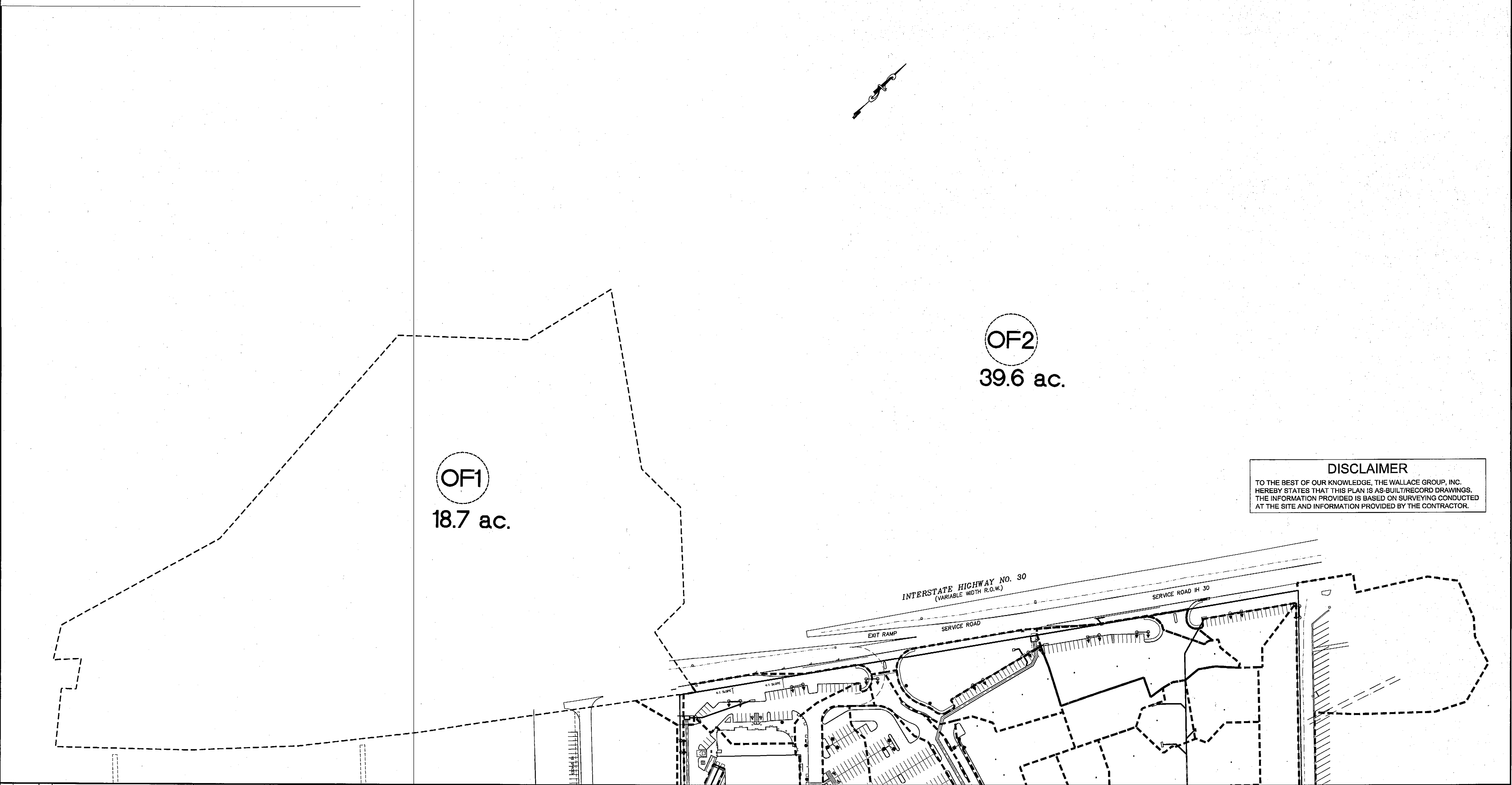


Offsite Fully Developed Runoff - Per City of Rockwall - Standards of Design and Construction

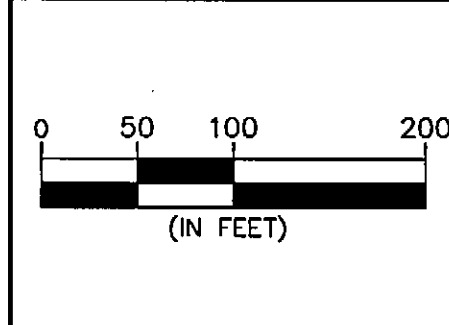
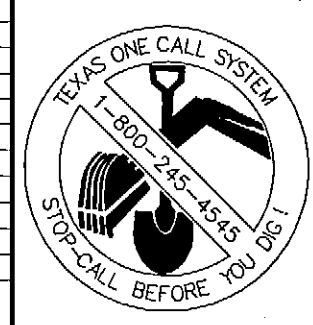
Offsite Flows - Fully Developed Conditions	Q10	Q25	Q100
Area OF1 (Ac.)	18.7	18.7	18.7
Runoff Coefficient	0.9	0.9	0.9
Time of Concentration (Min.)	10.0	10.0	10.0
Rainfall Intensity (in./hr)	7.25	8.25	9.8
Fully Developed Flow (cfs)	122.0	136.8	164.9 cfs -- Fully Dev. Discharge

Offsite Flows - Fully Developed Conditions	Q10	Q25	Q100
Area OF2 (Ac.)	39.6	39.6	39.6
Runoff Coefficient	0.9	0.9	0.9
Time of Concentration (Min.)	10.0	10.0	10.0
Rainfall Intensity (in./hr)	7.25	8.25	9.8
Fully Developed Flow (cfs)	258.4	294.0	349.3 cfs -- Fully Dev. Discharge



**DISCLAIMER**  
 TO THE BEST OF OUR KNOWLEDGE, THE WALLACE GROUP, INC. HEREBY STATES THAT THIS PLAN IS AS-BUILT/RECORD DRAWINGS. THE INFORMATION PROVIDED IS BASED ON SURVEYING CONDUCTED AT THE SITE AND INFORMATION PROVIDED BY THE CONTRACTOR.

REV	DATE	BY	DESCRIPTION



DESIGNED: ROC  
 DRAWN: FM  
 CHECKED: RS



"THE SEAL APPEARING ON THIS DOCUMENT WAS AUTHORIZED BY MATTHEW D. MORGAN, P.E. # 98329 ON THE DATE SHOWN ON THE DAYSTAMP. ALTERATION OF A SEALED DOCUMENT WITHOUT PROPER NOTIFICATION TO THE RESPONSIBLE ENGINEER IS AN OFFENSE UNDER THE TEXAS ENGINEERING PRACTICE ACT"

3/25/08 *Matthew D. Morgan*  
 DATE NAME

ENGINEERS ARCHITECTS

**THE WALLACE GROUP INC.**

SURVEYORS PLANNERS

THE WOODMONT COMPANY  
 PLAZA AT ROCKWALL  
**OFFSITE DRAINAGE MAP**

SHEET 32  
**C5.1**  
 OF 56 SHEETS

G:\Projects\168358\168358-BUILD\168358-BLD\_C50-C52-DRAW.dwg, 05-DRAW (C5.1), 2/28/2008 3:39:22 PM, rmye\_xerox\_hydr1.plt, 1:1