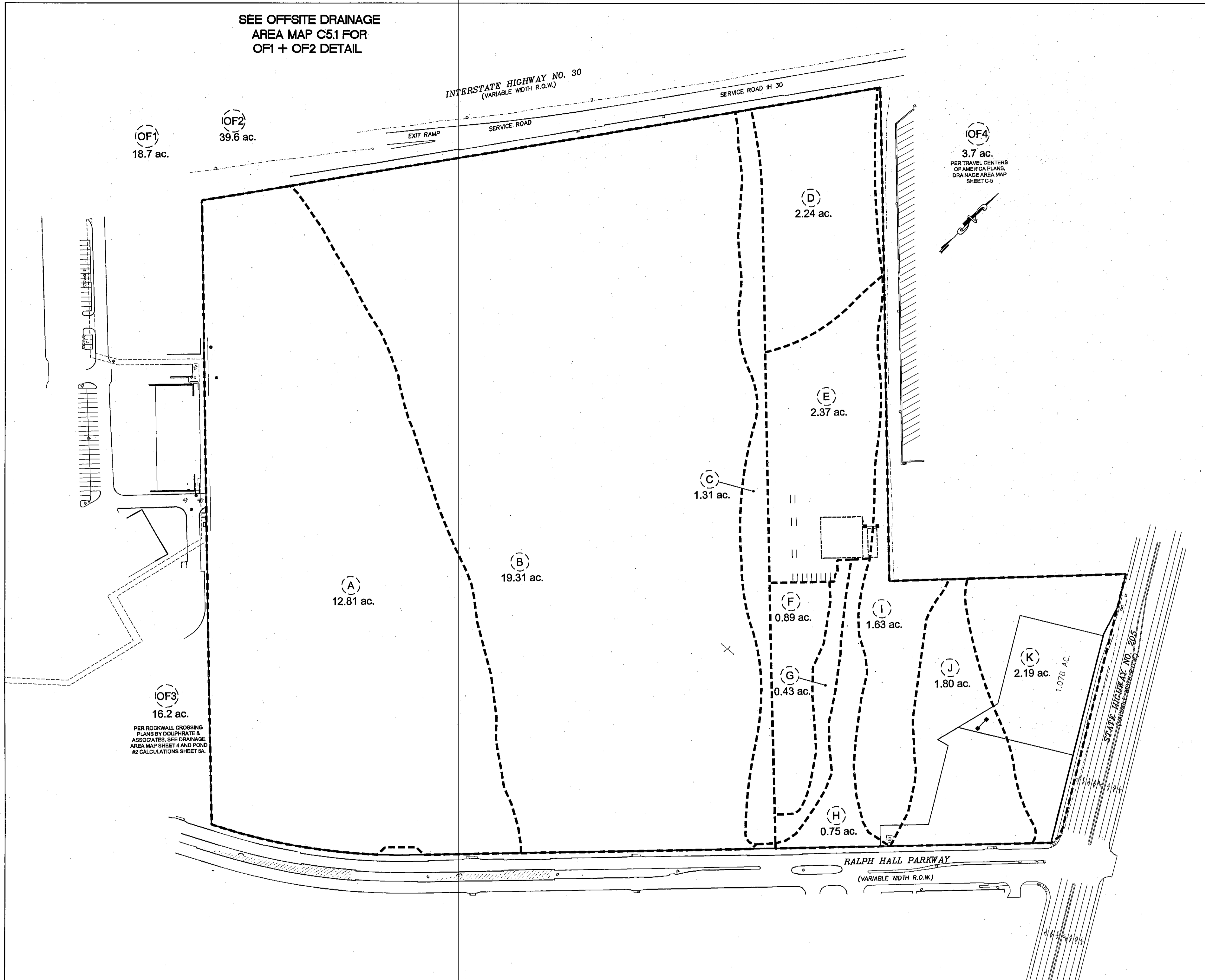
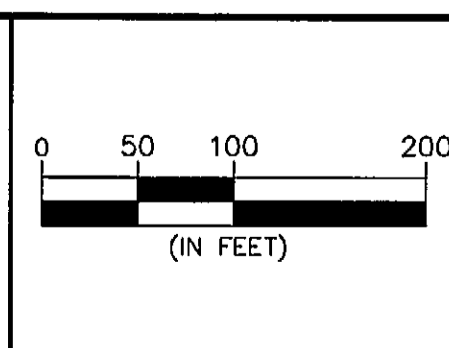
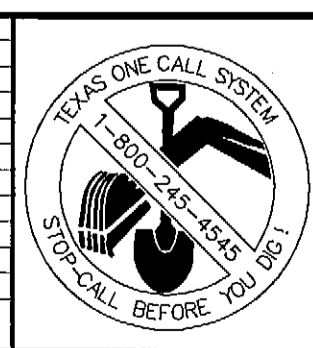


SEE OFFSITE DRAINAGE
AREA MAP C5.1 FOR
OF1 + OF2 DETAIL

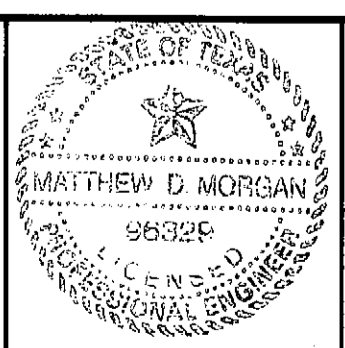


DISCLAIMER
TO THE BEST OF OUR KNOWLEDGE, THE WALLACE GROUP, INC.
HEREBY STATES THAT THIS PLAN IS AS-BUILT/RECORD DRAWINGS.
THE INFORMATION PROVIDED IS BASED ON SURVEYING CONDUCTED
AT THE SITE AND INFORMATION PROVIDED BY THE CONTRACTOR.

REV	DATE	BY	DESCRIPTION



DESIGNED: **RDC**
DRAWN: **FM**
CHECKED: **RS**



"THE SEAL APPEARING ON THIS DOCUMENT WAS AUTHORIZED BY
MATTHEW D. MORGAN, P.E. # 98325
ON THE DATE SHOWN ON THE DAYSTAMP.
ALTERATION OF A SEALED DOCUMENT WITHOUT PROPER NOTIFICATION TO THE RESPONSIBLE
ENGINEER IS AN OFFENSE UNDER THE TEXAS ENGINEERING PRACTICE ACT.

3/25/08 *Matthew D. Morgan*
DATE NAME

ENGINEERS ARCHITECTS

THE WALLACE GROUP INC.

SURVEYORS PLANNERS

THE WOODMONT COMPANY
PLAZA AT ROCKWALL
EXISTING DRAINAGE MAP

SHEET 31
C5.0
OF 56 SHEETS

G:\Projects\118255\dwg\AS-BUILT\118255-AB_C50-C52-DIM.dwg, EX:DM1 (CS:0), 2/28/2008 3:45:31 PM, rmys, Xerox_MyArt1.pc3, 1:1