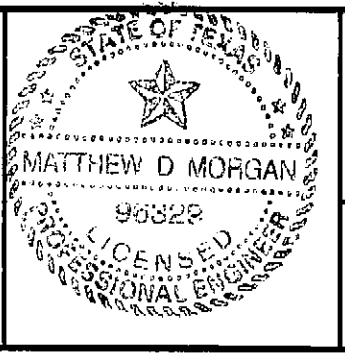
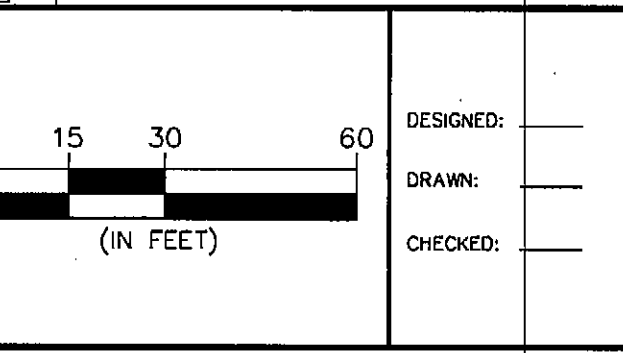


DISCLAIMER
 TO THE BEST OF OUR KNOWLEDGE, THE WALLACE GROUP, INC. HEREBY STATES THAT THIS PLAN IS AS-BUILT/RECORD DRAWINGS. THE INFORMATION PROVIDED IS BASED ON SURVEYING CONDUCTED AT THE SITE AND INFORMATION PROVIDED BY THE CONTRACTOR.

REV	DATE	BY	DESCRIPTION
1	7-08	MW	Adjusted grade at SH 205 entrance drive
2	8-10-07	MW	Revise contours at rear of Bldg. 25
3	3-8-07	R33	Revise Storm Sewer Line J



THE SEAL APPEARING ON THIS DOCUMENT WAS AUTHORIZED BY MATTHEW D. MORGAN, P.E. # 96822 ON THE DATE SHOWN ON THE DAYSTAMP. ALTERATION OF A SEALED DOCUMENT WITHOUT PROPER NOTIFICATION TO THE RESPONSIBLE ENGINEER IS AN OFFENSE UNDER THE TEXAS ENGINEERING PRACTICE ACT.

3/25/08 *Matthew D. Morgan*
 DATE NAME

ENGINEERS ARCHITECTS

THE WALLACE GROUP INC.

SURVEYORS PLANNERS

THE WOODMONT COMPANY

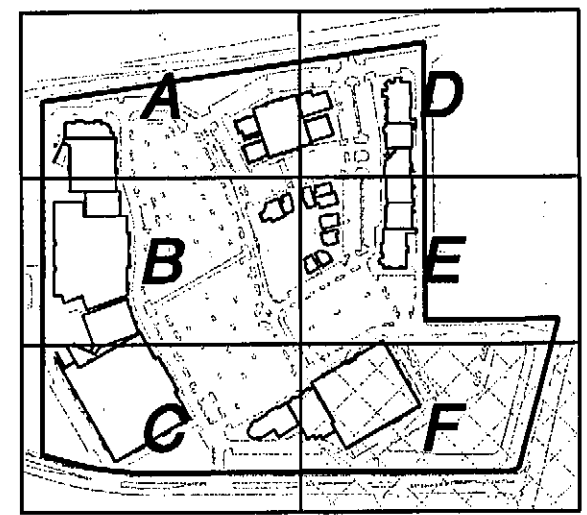
PLAZA AT ROCKWALL

GRADING PLAN F

SHEET 40

C5.9

OF 56 SHEETS



G:\Projects\13355\dwg\145-C5.9-GRD.DWG, Gr. - F (C5.9), 3/25/2008 9:22:27 AM, rax, Area_Myler.txd, 1:1