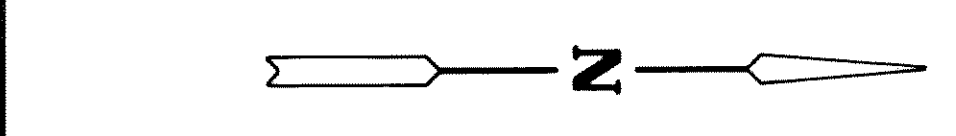
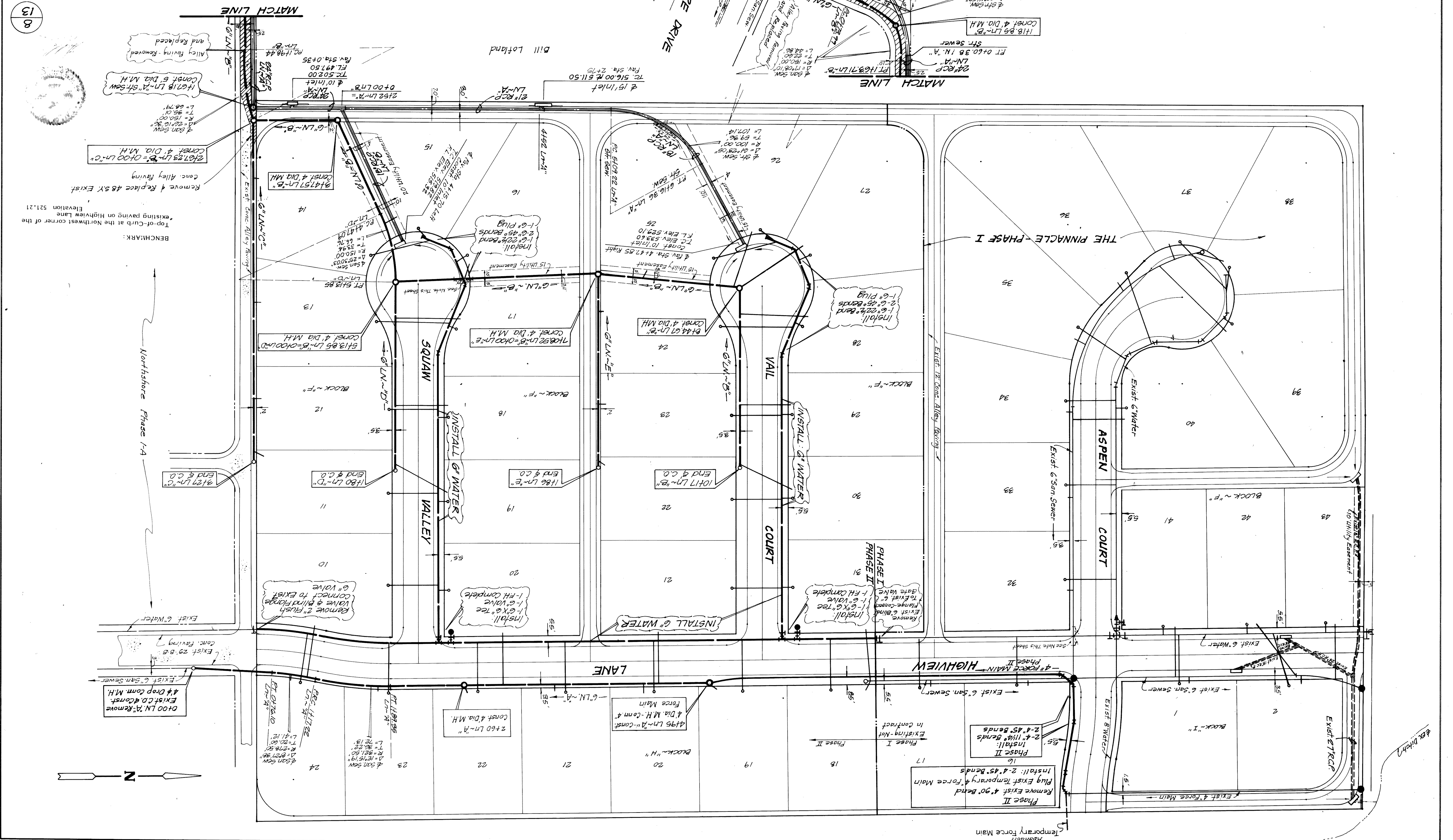


Rev. 3-21-91	Scale 1"=40'
Rev. 1-09-92	Date 11-05-90
Job No. 90115	Job No. 90115

Note: 1. Sanitary Sewer Pressure Pipe to be installed 9" both sides of water main crossing - not less than 150 PSI.

13
8



Abandon Temporary Force Main

PHASE I
PHASE II

PHASE I
PHASE II

PHASE I
PHASE II

PHASE I
PHASE II

PHASE I
PHASE II

PHASE I
PHASE II

PHASE I
PHASE II

PHASE I
PHASE II

PHASE I
PHASE II

PHASE I
PHASE II

PHASE I
PHASE II

PHASE I
PHASE II

PHASE I
PHASE II

PHASE I
PHASE II

PHASE I
PHASE II

PHASE I
PHASE II

PHASE I
PHASE II

PHASE I
PHASE II

PHASE I
PHASE II

PHASE I
PHASE II

PHASE I
PHASE II

PHASE I
PHASE II

PHASE I
PHASE II

PHASE I
PHASE II

PHASE I
PHASE II

PHASE I
PHASE II

PHASE I
PHASE II

PHASE I
PHASE II

PHASE I
PHASE II

PHASE I
PHASE II

PHASE I
PHASE II

PHASE I
PHASE II

PHASE I
PHASE II

PHASE I
PHASE II

PHASE I
PHASE II

PHASE I
PHASE II

PHASE I
PHASE II

PHASE I
PHASE II

PHASE I
PHASE II

PHASE I
PHASE II

PHASE I
PHASE II

PHASE I
PHASE II

PHASE I
PHASE II

PHASE I
PHASE II

PHASE I
PHASE II

PHASE I
PHASE II

PHASE I
PHASE II

PHASE I
PHASE II

PHASE I
PHASE II

PHASE I
PHASE II

PHASE I
PHASE II