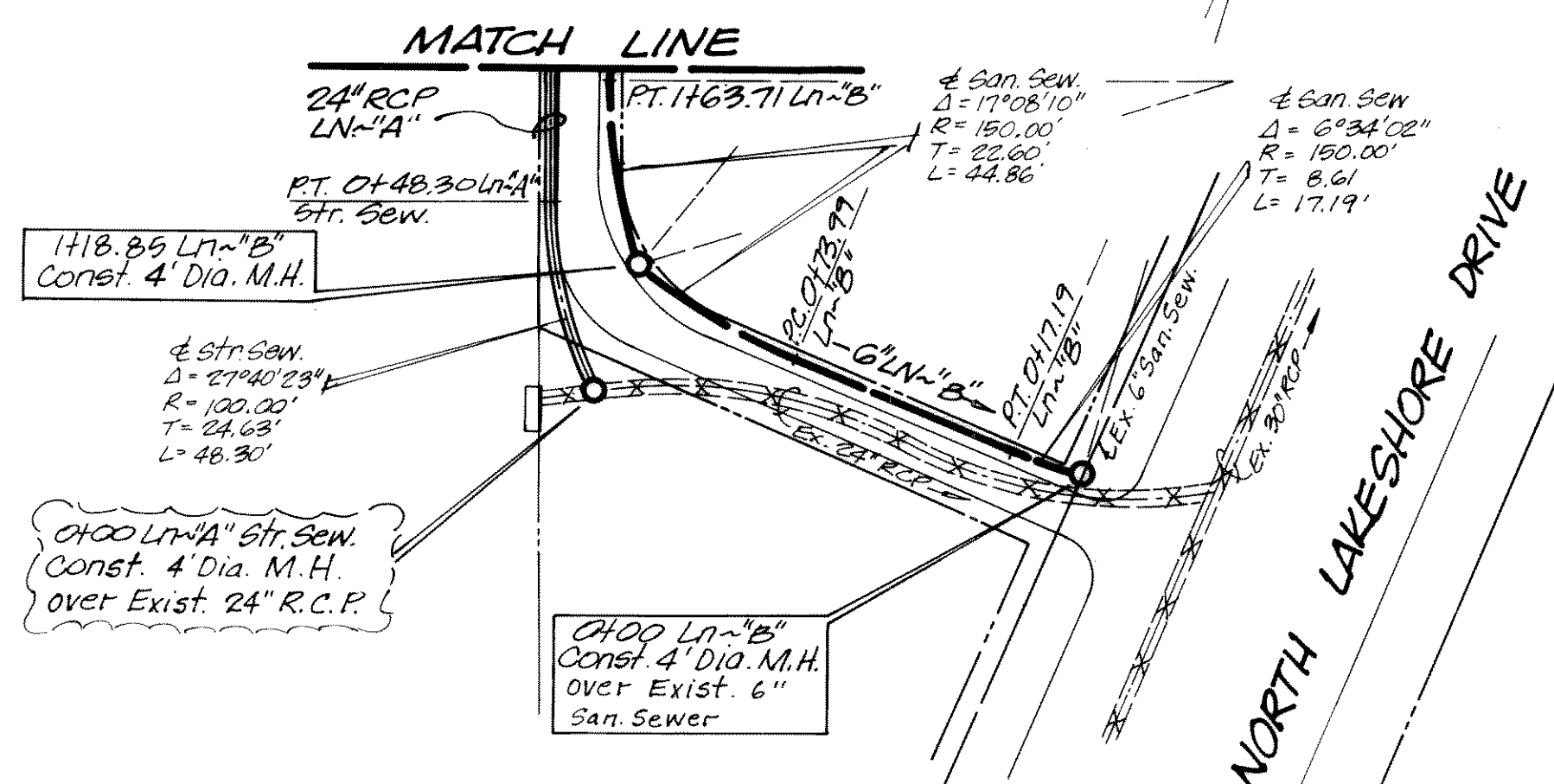


BENCHMARK:
Top-of-Curb at the Northwest corner of the existing paving on Highview Lane
Elevation 521.21



8
13



Notes:
1 Sanitary Sewer Pressure Pipe to be installed 9" on both sides of water main crossing - not less than 150 P.S.I.

HAROLD L EVANS CONSULTING ENGINEER 2331 GUS THOMASSON RD. SUITE 102 DALLAS, TEXAS 75228 PHONE (214) 328-8133		WATER, SANITARY & STORM SEWER PLAN THE PINNACLE CITY OF ROCKWALL, ROCKWALL COUNTY, TEXAS	
SCALE	DATE	JOB NO.	
1"=40'	11-05-90	90115	
Rev. 3-21-91			
Rev. 3-25-91			