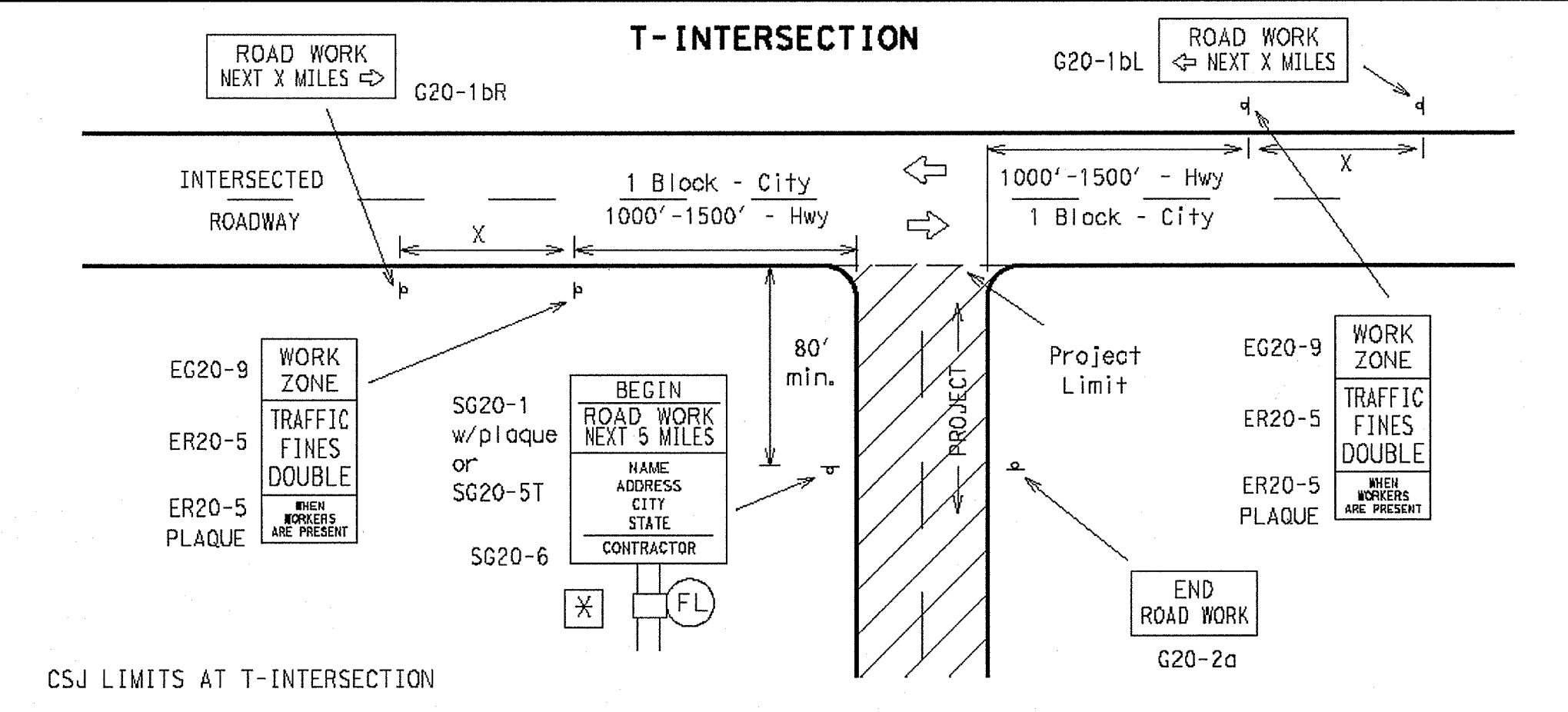
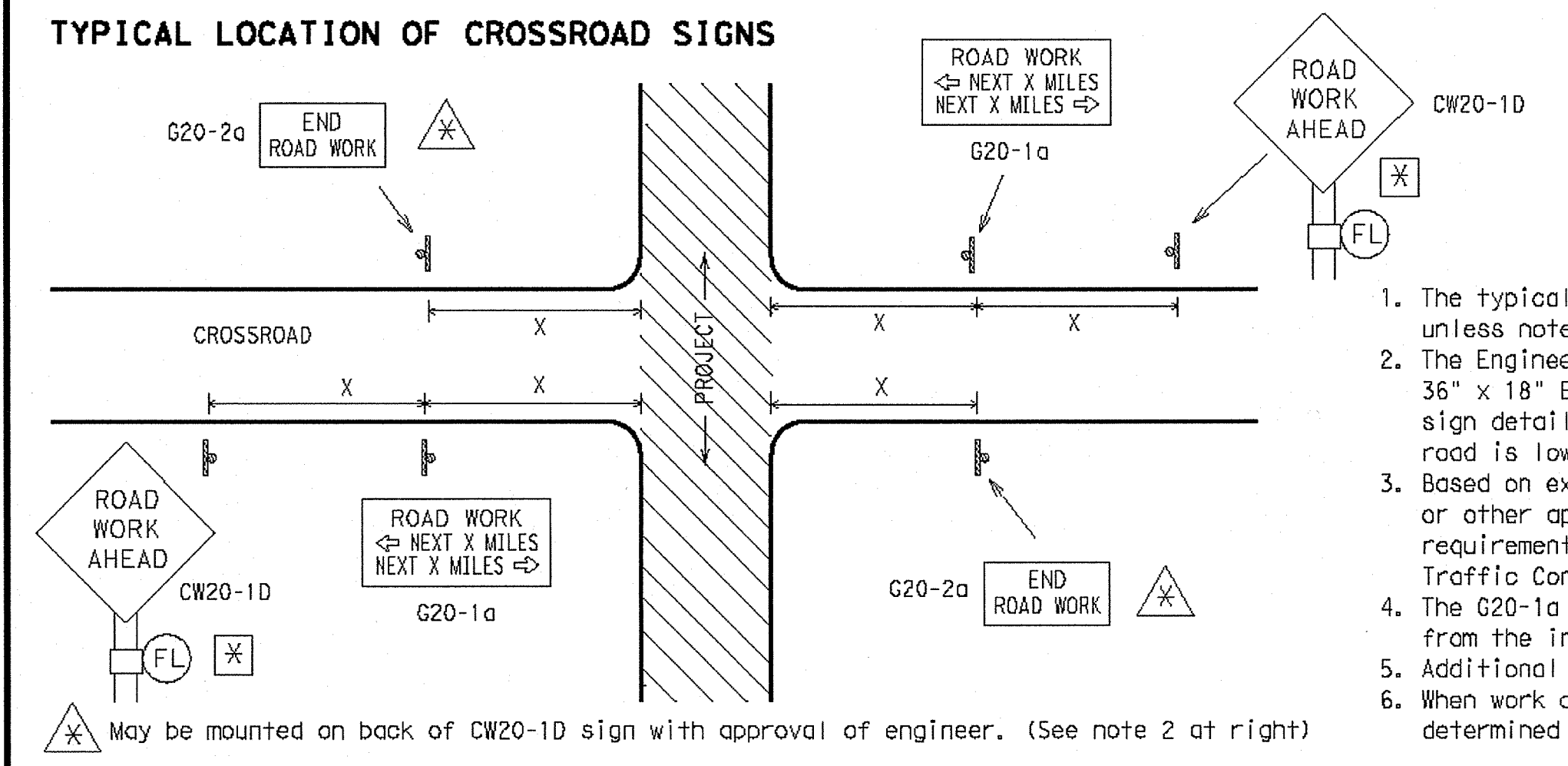
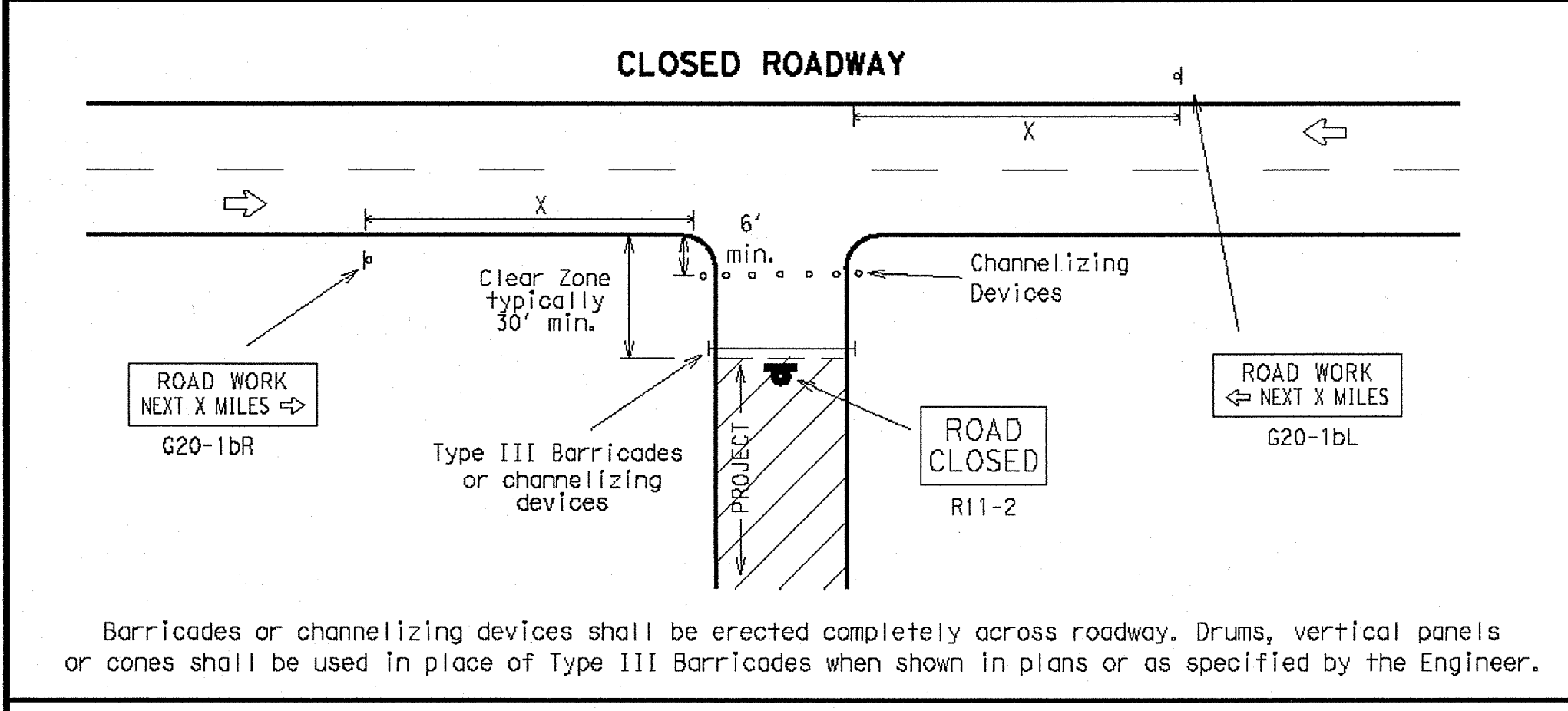
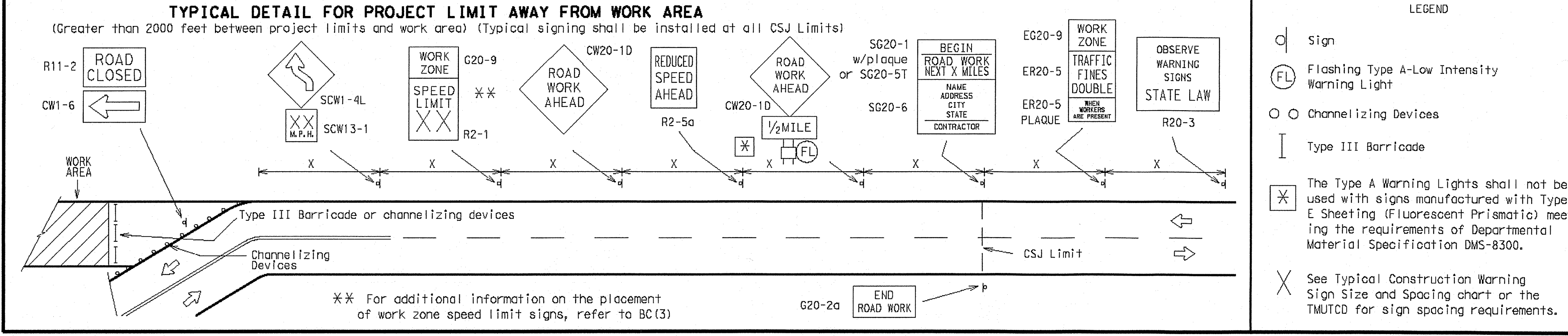
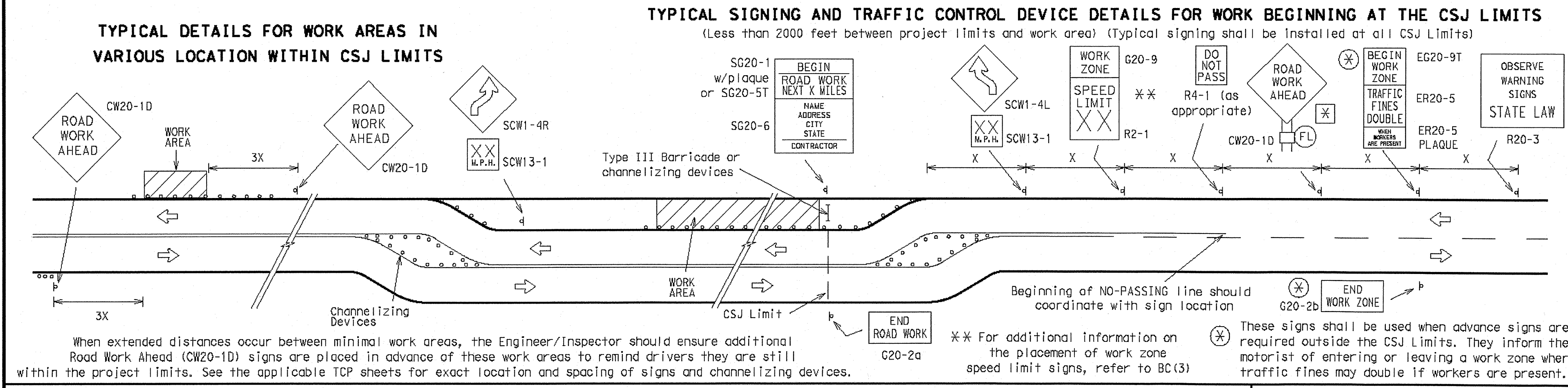


DISCLAIMER  
The use of this standard is governed by the "Texas Engineering Practice Act". No warranty of any kind is made by TxDOT for any purpose whatsoever. TxDOT assumes no responsibility for the conversion of this standard to other formats or for incorrect results or damages resulting from its use.

LEVELS DISPLAYED  
1 2 3 4 5 6 7 8 9 10 11 12 13 14 15 16 17 18 19 20 21 22 23 24 25 26 27 28 29 30 31 32 33 34 35 36 37 38 39 40 41 42 43 44 45 46 47 48 49 50 51 52 53 54 55 56 57 58 59 60 61 62 63 64 65 66 67 68 69 70 71 72 73 74 75 76 77 78 79 80 81 82 83 84 85 86 87 88 89 90 91 92 93 94 95 96 97 98 99 100  
ACC:



- CSJ LIMITS AT T-INTERSECTION**
1. A ROAD WORK NEXT X MILES (G20-1bR(L)) sign should be erected on the intersected highway as shown above.
  2. The Engineer will determine the types and location of any additional traffic control devices, such as a flagger and accompanying signs, or other signs, that should be used when work is being performed at or near an intersection.
  3. The Engineer/Inspector shall ensure that construction work zone signs are installed with adequate spacing between the signs so the legibility of existing permanent and other work zone signs is not obstructed.
1. The typical minimum signing on a crossroad approach should be a CW20-1D ROAD WORK AHEAD sign and a G20-2a END ROAD WORK sign, unless noted otherwise in plans.
  2. The Engineer may use the reduced size 36" x 36" ROAD WORK AHEAD (MCW20-1D) sign mounted back to back with the reduced size 36" x 18" END ROAD WORK (SG20-2a) sign on low volume crossroads. See the "Standard Highway Sign Designs for Texas" manual for sign details. The Engineer may omit the advance warning signs on low volume crossroads. The Engineer will determine whether a road is low volume. This information shall be shown in the plans.
  3. Based on existing field conditions, the Engineer/Inspector may require additional signs such as FLAGGER AHEAD, LOOSE GRAVEL, or other appropriate signs. When additional signs are required, these signs will be considered part of the minimum requirements. The Engineer/Inspector will determine the proper location and spacing of any sign not shown on the BC sheets, Traffic Control Plan sheets or the Work Zone Standard Sheets.
  4. The G20-1a sign shall be required on major crossroads to advise motorists of the length of construction in either direction from the intersection. The Engineer will determine whether a roadway is considered high volume.
  5. Additional traffic control devices may be shown elsewhere in the plans for higher volume crossroads.
  6. When work occurs in the intersection area, appropriate traffic control devices, as shown elsewhere in the plans or as determined by the Engineer/Inspector, shall be in place.



- LEGEND**
- Sign
  - Ⓛ Flashing Type A-Low Intensity Warning Light
  - Channelizing Devices
  - ▬ Type III Barricade
  - ⊗ The Type A Warning Lights shall not be used with signs manufactured with Type E Sheeting (Fluorescent Prismatic) meeting the requirements of Departmental Material Specification DMS-8300.
  - ⊗ See Typical Construction Warning Sign Size and Spacing chart or the TMUTCD for sign spacing requirements.

**TYPICAL CONSTRUCTION WARNING SIGN SIZE AND SPACING**<sup>1,5,6</sup>

Posted Speed MPH	Sign Spacing "X"	Long-term Or Intermediate-term Stationary Approach Warning Signs CW20 and CW21 Series		Short-term Stationary Or Short Duration Approach Warning Signs CW21 Series		Other Warning Signs
		Standard inches	Minimum <sup>4</sup> inches	Standard inches <sup>7</sup>	Minimum <sup>4</sup> inches <sup>7</sup>	
30	120	48 x 48	36 x 36	30 x 30 or 36 x 36	24 x 24 or 30 x 30	30 x 30 or 36 x 36
35	160					
40	240	Use Standard Size	↓	↓	Use Standard Size	↓
45	320					
50	400	↓	↓	↓	↓	↓
55	500 <sup>2</sup>					
60	600 <sup>2</sup>	↓	↓	48 x 48	↓	48 x 48
65	700 <sup>2</sup>					
70	800 <sup>2</sup>	↓	↓	↓	↓	↓
75	900 <sup>2</sup>					
*	*	↓	↓	↓	↓	↓

\* For typical sign spacings on expressways and freeways, see Part VI of the "Texas Manual on Uniform Traffic Control Devices" (TMUTCD) typical application diagrams or TCP Standard Sheets.  
<sup>Δ</sup> Minimum distance from work area to first Advance Warning sign and/or distance between each additional sign.

General Notes:  
 1. Special or larger size signs may be used as necessary.  
 2. Distance between signs should be increased as required to have 1500 feet advance warning.  
 3. Distance between signs should be increased as required to have 1/2 mile or more advance warning.  
 4. For use only on secondary roads or city streets where speeds are low.  
 5. Only diamond shaped warning sign sizes are indicated.  
 6. See sign size listing in "TMUTCD", Appendix A or the "Standard Highway Sign Design" manual for complete list of available sign design sizes.  
 7. Where two sizes are listed, see sign size listing in "TMUTCD", Appendix A or the "Standard Highway Sign Design" manual for proper size.

Only pre-qualified products shall be used. A copy of the "Compliant Work Zone Traffic Control Devices List" (CWZTCD) describes pre-qualified products and their sources and may be obtained by contacting:

**Standards Engineer**  
 Traffic Operations Division - TE  
 Texas Department of Transportation  
 125 East 11th Street  
 Austin, Texas 78701-2483  
 Phone (512) 416-3120  
 Fax (512) 416-3299

Instructions to locate the "CWZTCD" on TxDOT website are:  
 Start at website - [www.dot.state.tx.us](http://www.dot.state.tx.us)  
 Click on "About TxDOT",  
 Click on "Organizational Chart",  
 Click on "Traffic Operations Box",  
 Click on "Compliant Work Zone Traffic Control Devices",  
 Click on "View PDF".  
 This site is printable.

**STANDARD PLANS**  
 TEXAS DEPARTMENT OF TRANSPORTATION  
 Traffic Operations Division

**BARRICADE AND CONSTRUCTION PROJECT LIMIT STANDARD**

2 of 12 BC(2)-03

© TxDOT 11-4-02

DESIGNED BY: TxDOT	DIV: BAS	CS: GRB	DR: FDN	CA: CAL
DRAWN BY: TxDOT	STATE	FEDERAL	FEDERAL AID PROJECT	SHEET
CHECKED BY: P.D.K.	6			
DATE: Feb. 27, 2008	COUNTY	CONTROL	SECTION	JOB
PROJECT NO. 068237002				

**RECORD DRAWING**  
 THIS RECORD DRAWING HEREIN REFLECTS TO THE BEST OF THE DESIGN ENGINEER'S KNOWLEDGE, THE APPROXIMATE LOCATION OF THE CONSTRUCTED WORK, USING INFORMATION AS PROVIDED BY THE CONTRACTORS AND SURVEYED GRADES.

**Kimley-Horn and Associates, Inc.**  
 Tel. No. (972) 335-3890  
 Fax No. (972) 335-3776

**Pecan Valley Drive and Quail Run Road**  
 City of Rockwall, Texas

**TxDOT BARRICADE AND CONSTRUCTION PROJECT LIMIT STANDARD BC(2)-03**

Scale: Not To Scale  
 Designed by: TxDOT  
 Drawn by: TxDOT  
 Checked by: P.D.K.  
 Date: Feb. 27, 2008  
 Project No. 068237002

SHEET **C-34** OF 47

PREPARED BY: P.D.K.  
 PLOTTED BY: DONALDSON, JUSTIN  
 DATE: 02/27/08  
 LAST SAVED: 11:58:58 AM