

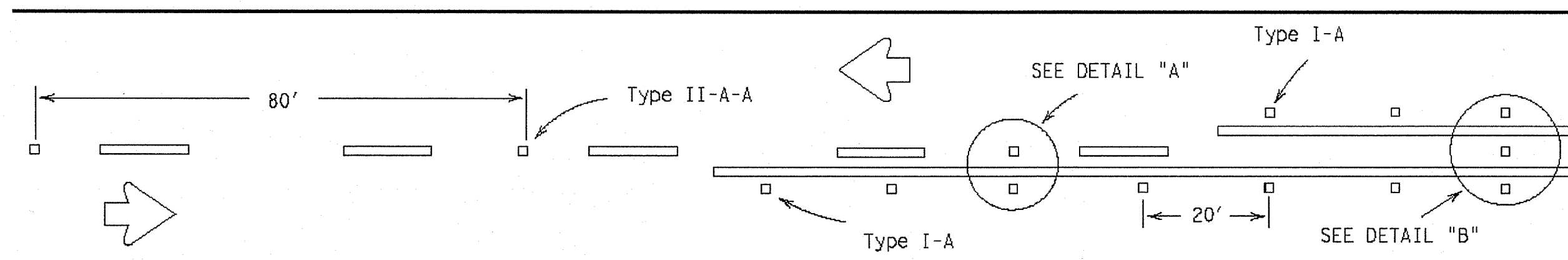
DISCLAIMER
The use of this standard is governed by the "Texas Engineering Practice Act". No warranty of any kind is made by TxDOT for any purpose whatsoever. TxDOT assumes no responsibility for the conversion of this standard to other formats or for incorrect results or damages resulting from its use.

LEVELS DISPLAYED

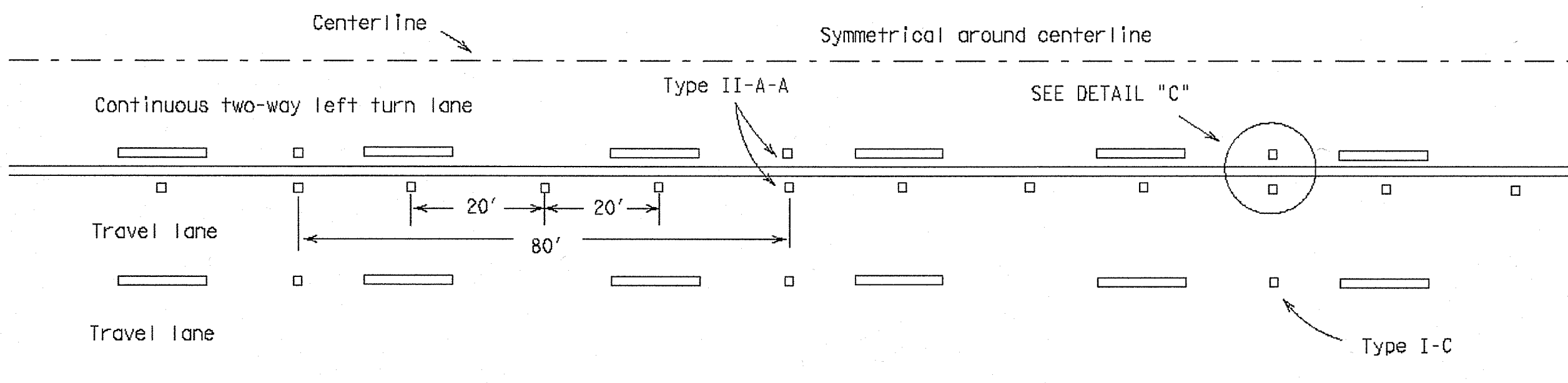
| | | | | | | | | | | | | | | | | | | | | | | | | | | | | | | | | | | | | | | | | | | | | | | | | | | | | | | | | | | | | | | | | | | | | | | | | | | | | | | | | | | | | | | | | | | | | | | | | | | | |
|---|---|---|---|---|---|---|---|---|----|----|----|----|----|----|----|----|----|----|----|----|----|----|----|----|----|----|----|----|----|----|----|----|----|----|----|----|----|----|----|----|----|----|----|----|----|----|----|----|----|----|----|----|----|----|----|----|----|----|----|----|----|----|----|----|----|----|----|----|----|----|----|----|----|----|----|----|----|----|----|----|----|----|----|----|----|----|----|----|----|----|----|----|----|----|----|----|----|----|-----|
| 1 | 2 | 3 | 4 | 5 | 6 | 7 | 8 | 9 | 10 | 11 | 12 | 13 | 14 | 15 | 16 | 17 | 18 | 19 | 20 | 21 | 22 | 23 | 24 | 25 | 26 | 27 | 28 | 29 | 30 | 31 | 32 | 33 | 34 | 35 | 36 | 37 | 38 | 39 | 40 | 41 | 42 | 43 | 44 | 45 | 46 | 47 | 48 | 49 | 50 | 51 | 52 | 53 | 54 | 55 | 56 | 57 | 58 | 59 | 60 | 61 | 62 | 63 | 64 | 65 | 66 | 67 | 68 | 69 | 70 | 71 | 72 | 73 | 74 | 75 | 76 | 77 | 78 | 79 | 80 | 81 | 82 | 83 | 84 | 85 | 86 | 87 | 88 | 89 | 90 | 91 | 92 | 93 | 94 | 95 | 96 | 97 | 98 | 99 | 100 |
|---|---|---|---|---|---|---|---|---|----|----|----|----|----|----|----|----|----|----|----|----|----|----|----|----|----|----|----|----|----|----|----|----|----|----|----|----|----|----|----|----|----|----|----|----|----|----|----|----|----|----|----|----|----|----|----|----|----|----|----|----|----|----|----|----|----|----|----|----|----|----|----|----|----|----|----|----|----|----|----|----|----|----|----|----|----|----|----|----|----|----|----|----|----|----|----|----|----|----|-----|

ACC:

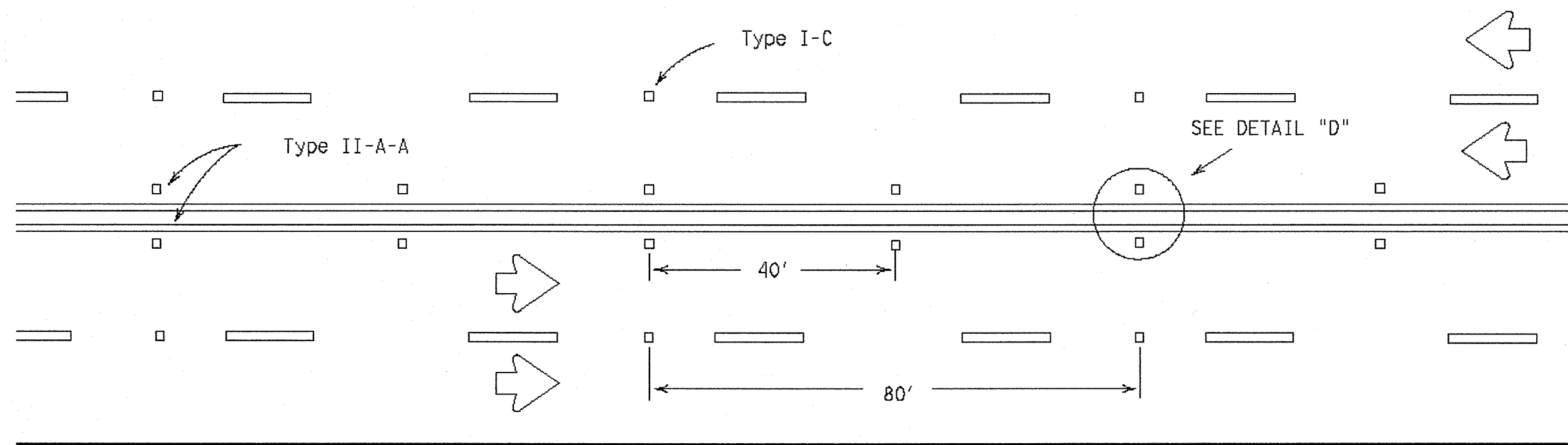
REFLECTIVE RAISED PAVEMENT MARKERS USED TO SUPPLEMENT STANDARD PAVEMENT MARKINGS



CENTERLINE & NO-PASSING LINES FOR 2 LANE TWO-WAY HWYS 24 FT. OR WIDER

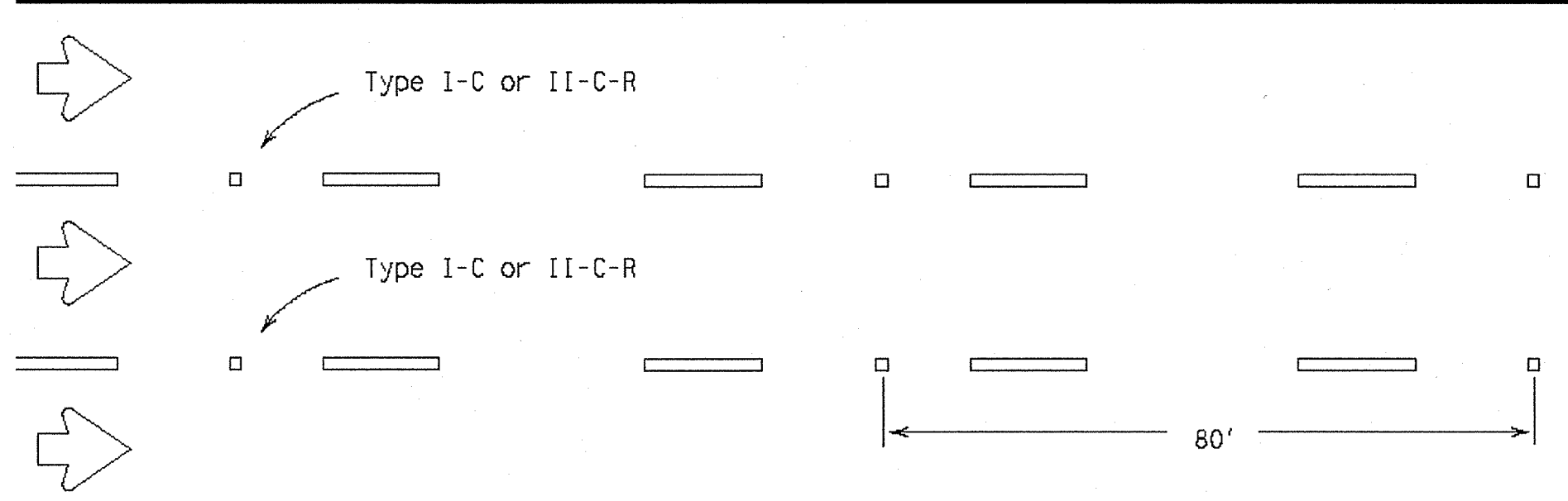


CENTERLINES & LANE LINES FOR TWO-WAY LEFT TURN LANE



CENTERLINE & LANE LINES FOR 4 LANE TWO-WAY HIGHWAYS

Raised pavement marker Type I-C, clear face toward normal traffic, shall be placed on 80-foot centers.

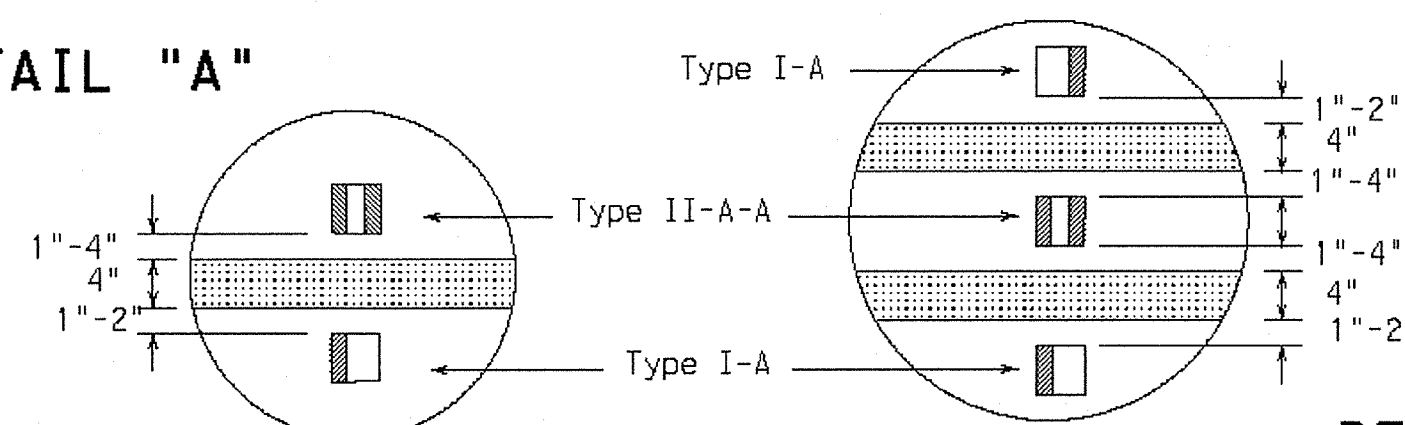


LANE LINES FOR ONE-WAY ROADWAY (NON-FREEWAY)

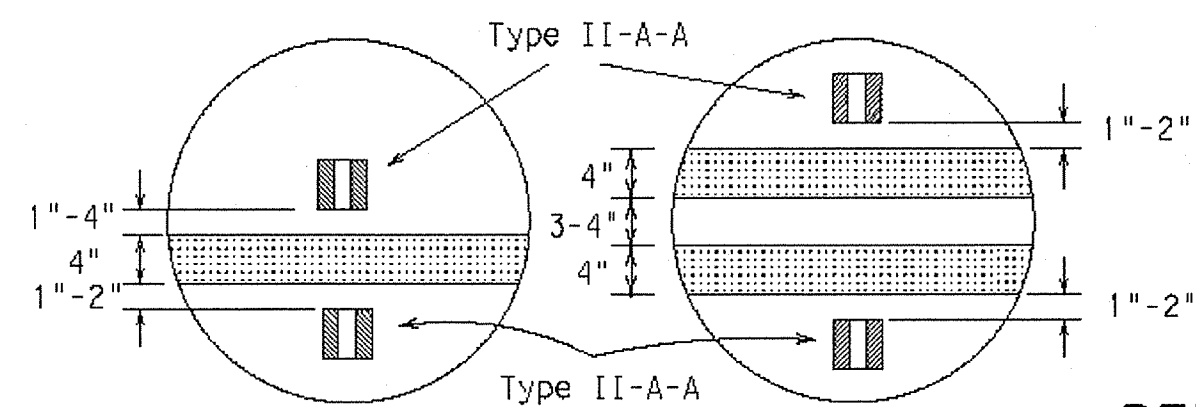
Raised pavement markers Type II-C-R shall have clear face toward normal traffic and red face toward wrong-way traffic. As required by the Engineer or shown elsewhere in the plans, Type II-C-R or Type I-C markers may be placed on 40-foot centers for the below listed conditions:

1. horizontal curves,
2. continuously illuminated sections,
3. high volume roadways
4. or roadways where safety concerns exist.

DETAIL "A"



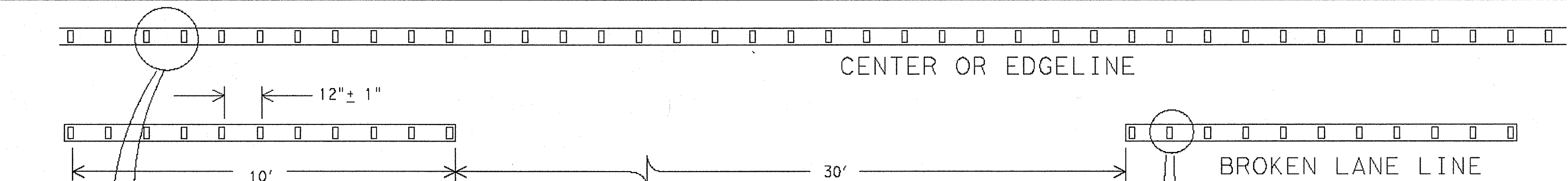
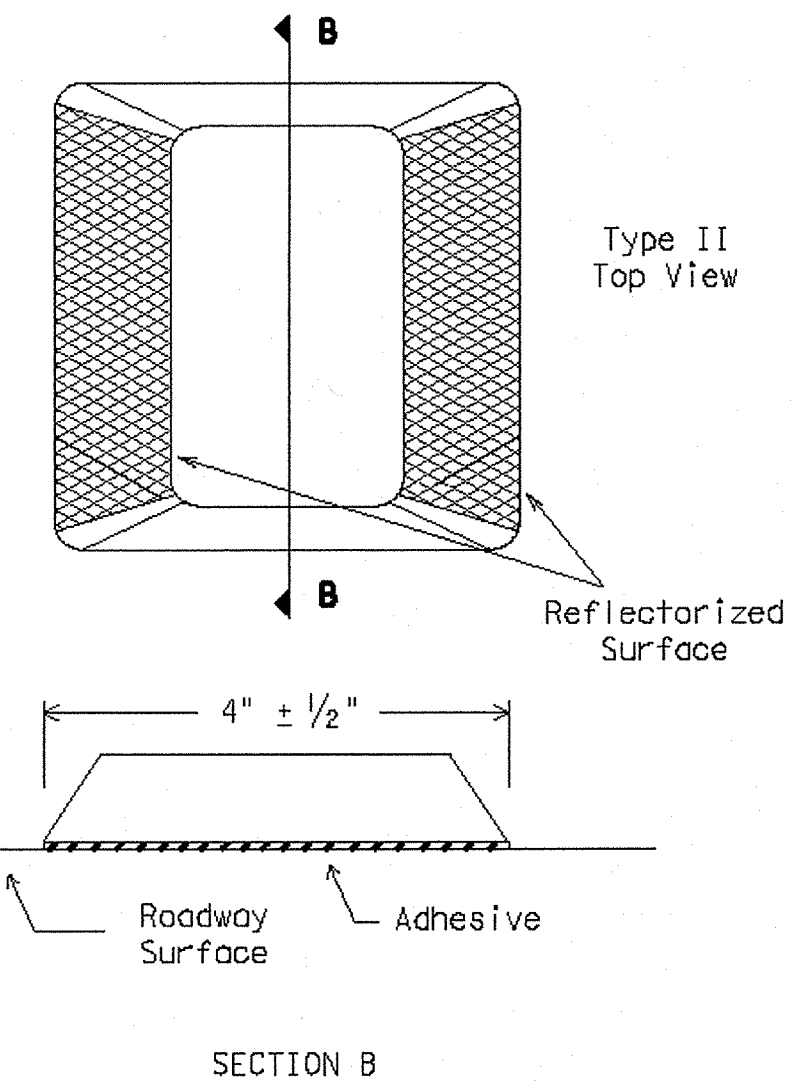
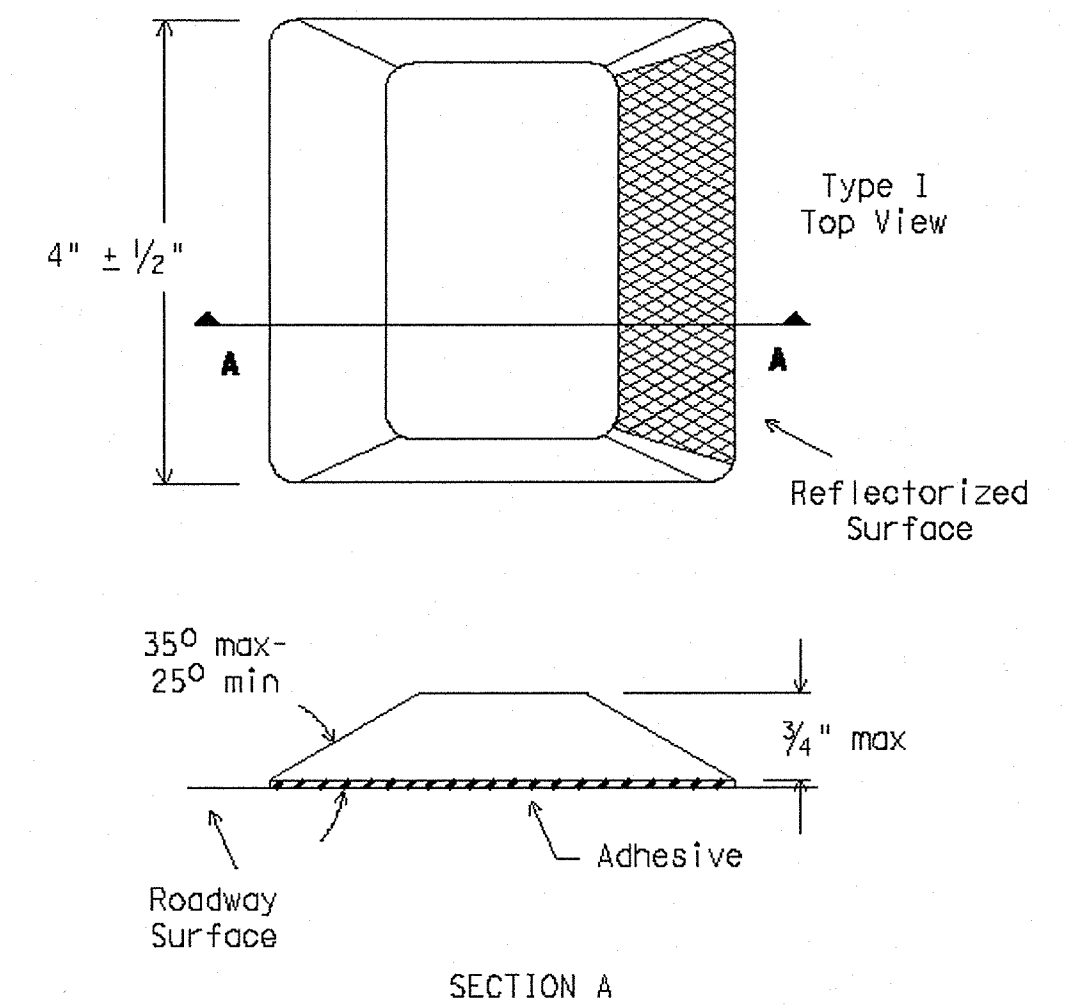
DETAIL "B"



DETAIL "C"

DETAIL "D"

RAISED PAVEMENT MARKERS (REFLECTORIZED)

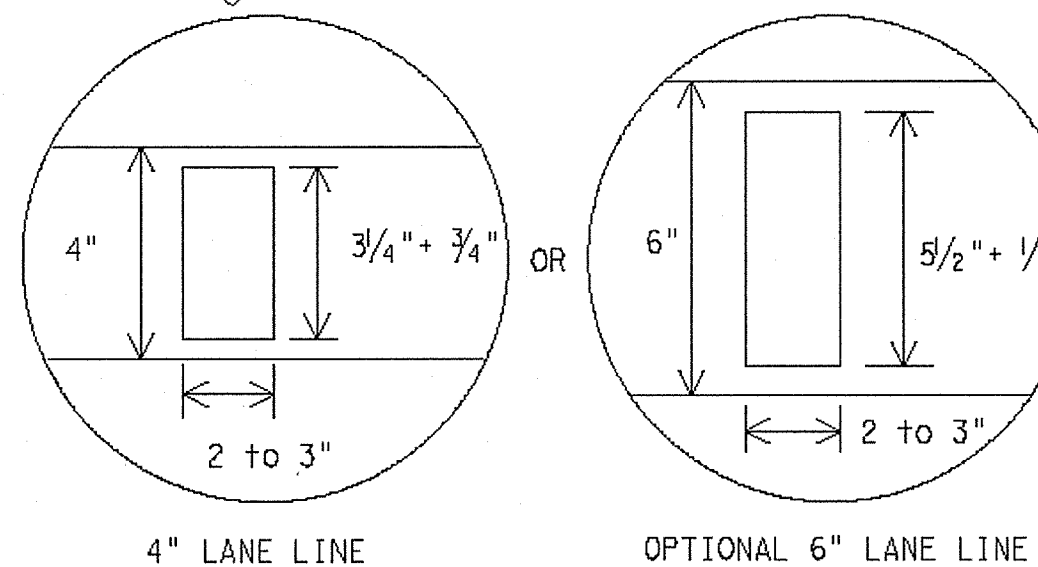
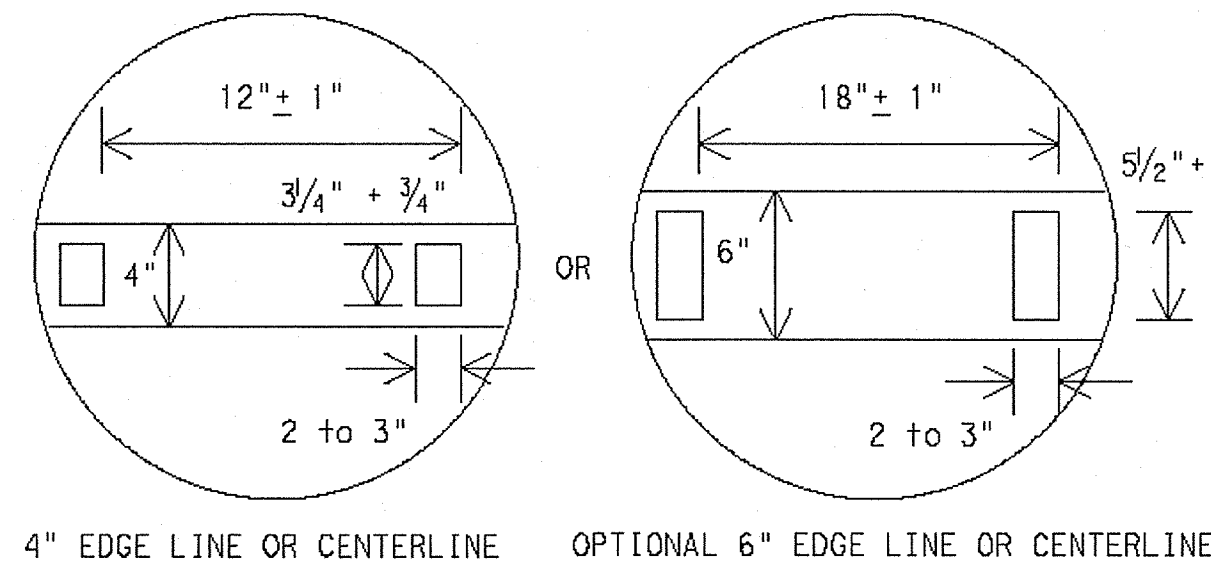


REFLECTORIZED PROFILE PATTERN DETAIL

USING REFLECTIVE PROFILE PAVEMENT MARKINGS

300 to 500 mil in height

A quick field check for the thickness of base line and profile marking is approximately equal to a stack of 5 quarters to a maximum height of 7 quarters. For base line thickness refer to Special Specification "ReflectORIZED Profile Pavement Markings."



GENERAL NOTES:

All raised pavement markers placed in broken lines shall be placed in line with and midway between the stripes.

On concrete pavements the raised pavement markers should be placed to one side of the longitudinal joints.

All pavement marking materials shall meet the required Departmental Material Specifications as specified by the plans.

SPECIFICATION REFERENCE TABLE

| MATERIAL SPECIFICATIONS | |
|------------------------------------|----------|
| PAVEMENT MARKERS (REFLECT.) | DMS-4200 |
| EPOXY | DMS-6100 |
| BITUMINOUS ADHESIVE FOR PAVE. MKS. | DMS-6130 |

STANDARD PLANS
Texas Department of Transportation
Traffic Operations Division

SUPPLEMENTAL MARKINGS USING RAISED PAVEMENT MARKERS REFLECTORIZED PROFILE MARKINGS

PM(3)-00A

| | | | | | |
|------------|------|----|--------|------|----|
| REVISED BY | DATE | BY | REASON | DATE | BY |
| 10-86 | | | | | |
| 4-92 | | | | | |
| 5-00 | | | | | |
| 8-00 | | | | | |

RECORD DRAWING
THIS RECORD DRAWING HEREIN REFLECTS TO THE BEST OF THE DESIGN ENGINEERS KNOWLEDGE, THE APPROXIMATE LOCATION OF THE CONSTRUCTED WORK, USING INFORMATION AS PROVIDED BY THE CONTRACTORS AND SURVEYED GRADES.

Kimley-Horn and Associates, Inc.
Tel. No. (972) 355-3990
Fax No. (972) 355-3779

5750 Genesis Court, Suite 200
Frisco, Texas 75034

STATE OF TEXAS
PIETER D. KESSELS
87775
LICENSED PROFESSIONAL ENGINEER
02-27-008

Pecan Valley Drive and Quail Run Road
City of Rockwall, Texas

TxDOT SUPPLEMENTAL MARKINGS USING RAISED PAVEMENT MARKERS REFLECTORIZED PROFILE MARKINGS PM(3)-00A

Scale: Not To Scale
Designed by: TxDOT
Drawn by: TxDOT
Checked by: P.D.K.
Date: Feb. 27, 2008
Project No. 068237002

SHEET **C-45**
OF 47