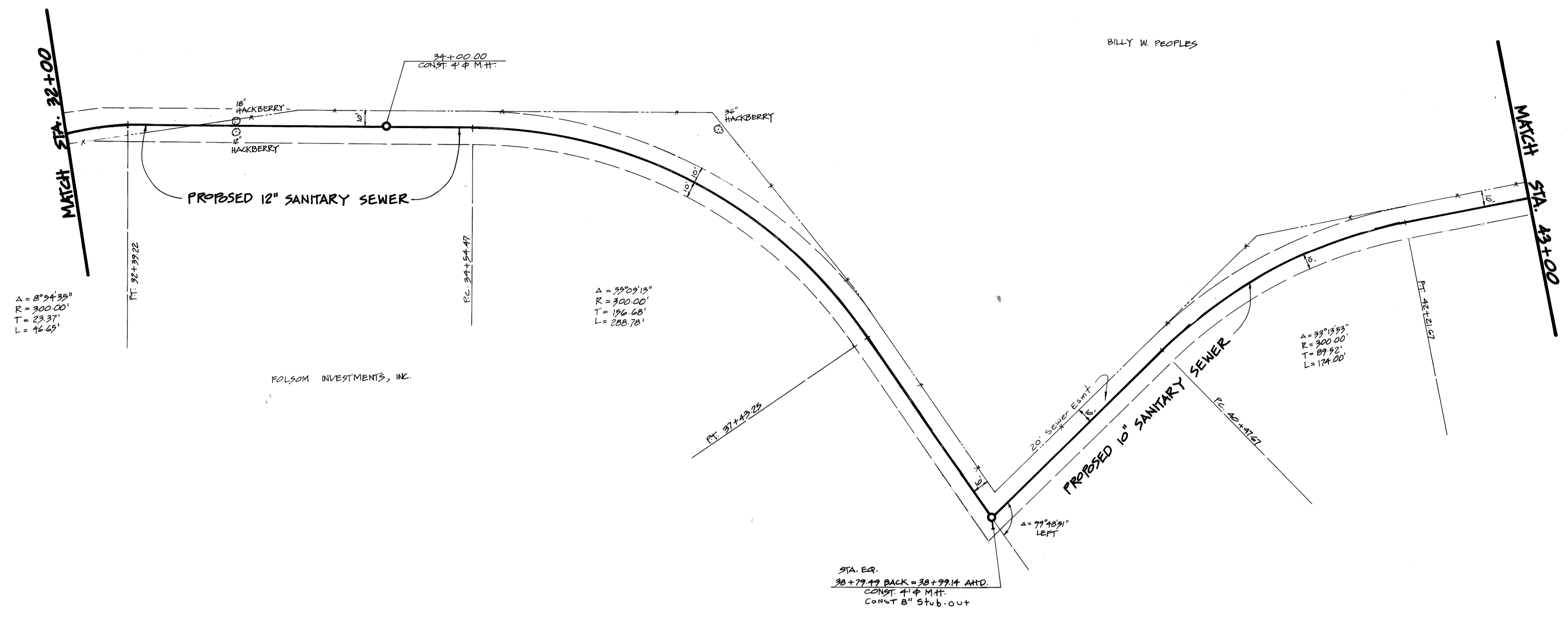


BILLY W. PEOPLES



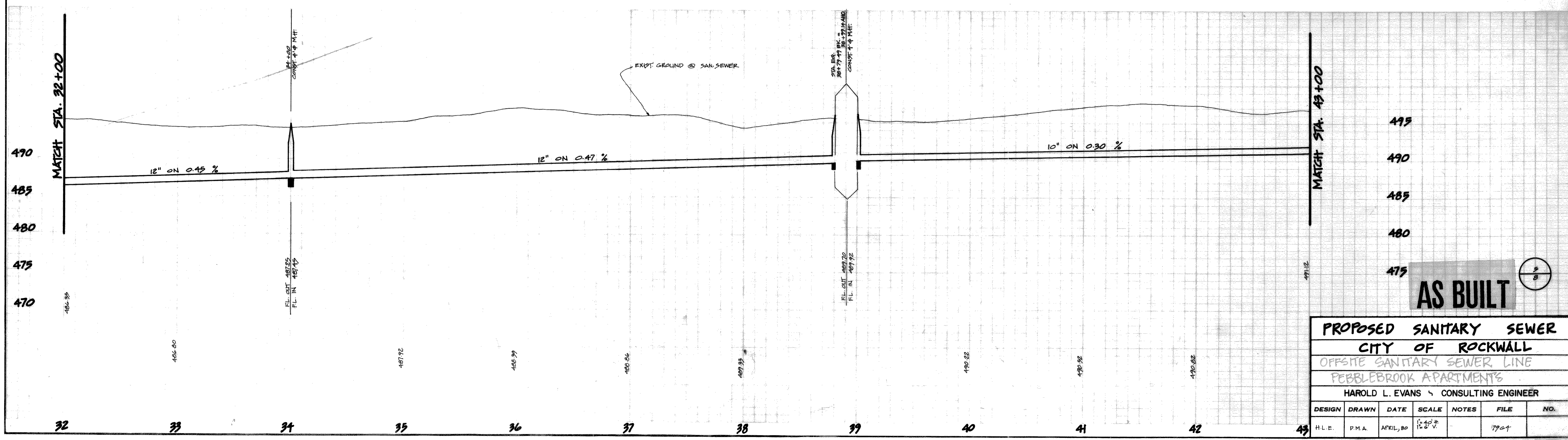
$\Delta = 8^{\circ}34'35''$   
 $R = 300.00'$   
 $T = 23.37'$   
 $L = 16.65'$

$\Delta = 77^{\circ}29'13''$   
 $R = 300.00'$   
 $T = 196.68'$   
 $L = 288.78'$

$\Delta = 33^{\circ}13'53''$   
 $R = 300.00'$   
 $T = 89.92'$   
 $L = 174.00'$

FOLSOM INVESTMENTS, INC.

STA. EQ.  
 $38+79.49$  BACK =  $38+99.14$  AHD.  
 CONST. 4" M.H.  
 CONST. 8" Stub-out



**AS BUILT**

PROPOSED SANITARY SEWER						
CITY OF ROCKWALL						
OFFSITE SANITARY SEWER LINE						
PEBBLEBROOK APARTMENTS						
HAROLD L. EVANS & CONSULTING ENGINEER						
DESIGN	DRAWN	DATE	SCALE	NOTES	FILE	NO.
H.L.E.	P.M.A.	APRIL, 80	1" = 40'		7794	