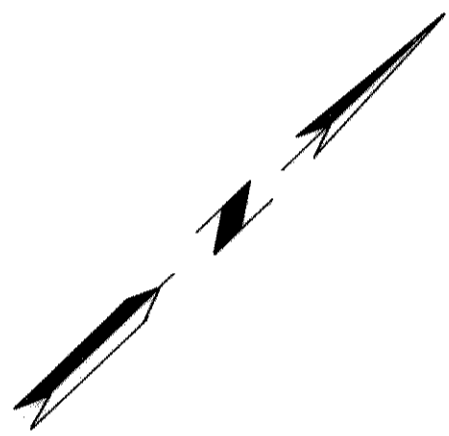
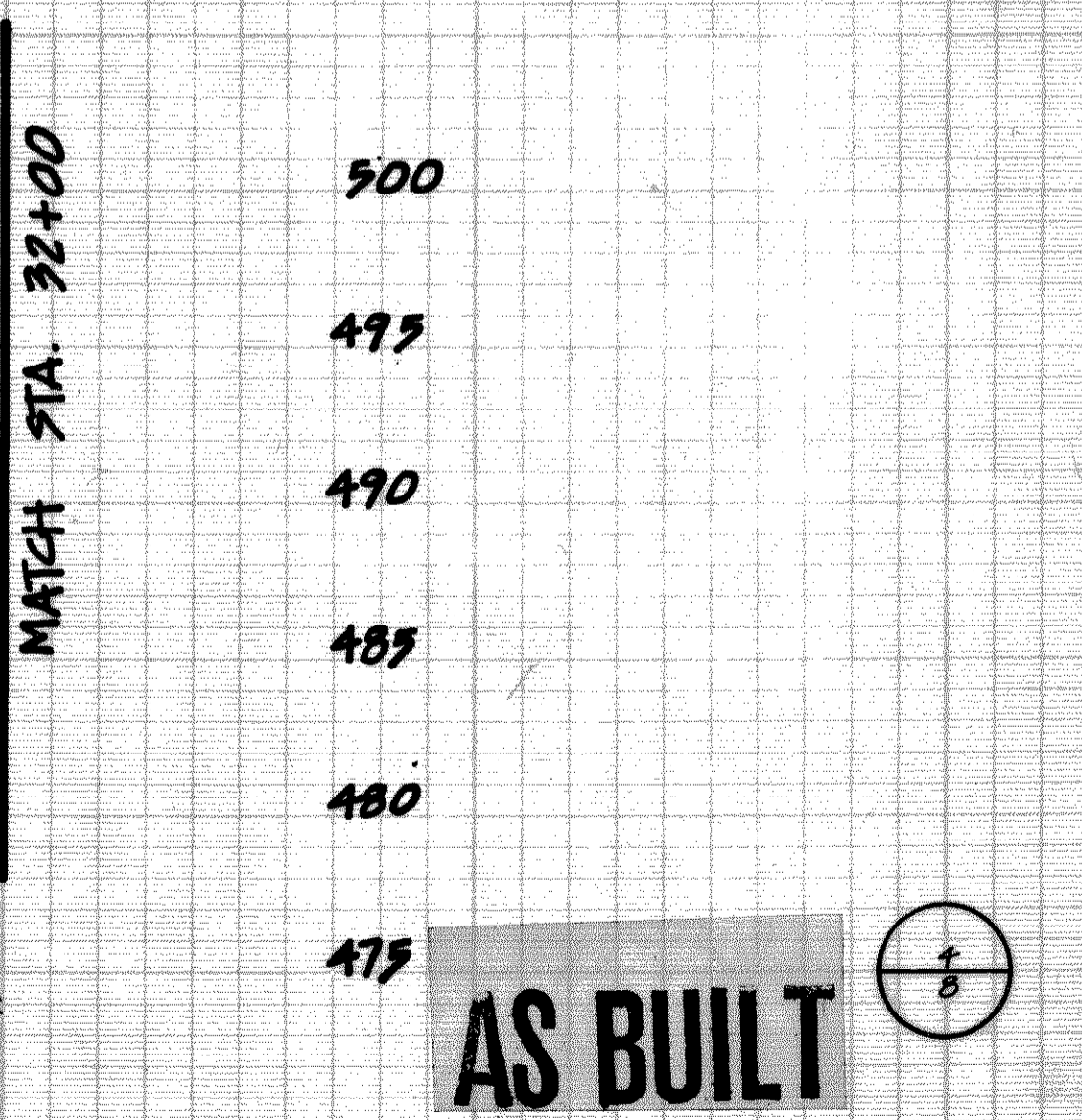
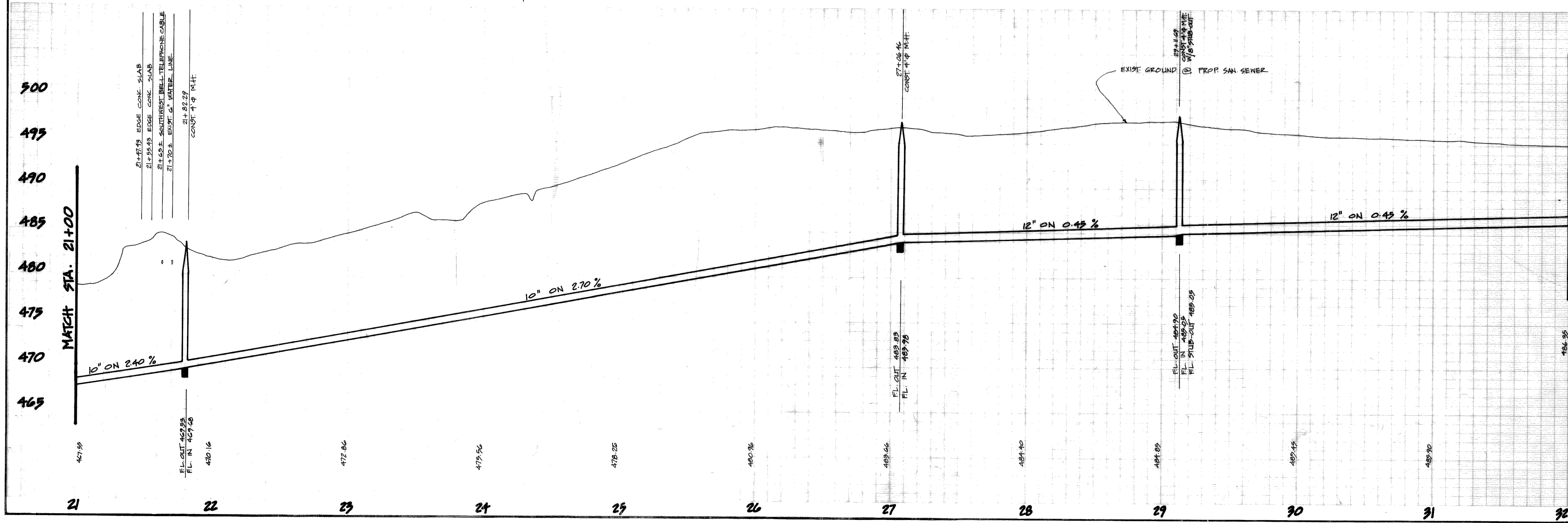


$\Delta = 6^{\circ}54'39''$
 $R = 300.00'$
 $T = 23.37'$
 $L = 46.69'$



B.M. :
 NAIL IN 30" PECAN TREE 6' ± OF STATION 28+13 ±
 ELEVATION : 498.22



AS BUILT

PROPOSED SANITARY SEWER CITY OF ROCKWALL OFFSITE SANITARY SEWER PEBBLEBROOK APARTMENTS HAROLD L. EVANS & CONSULTING ENGINEER						
DESIGN	DRAWN	DATE	SCALE	NOTES	FILE	NO.
H.L.E.	D.M.A.	APRIL, 80	1" = 40' V. 1" = 20' H.		7964	