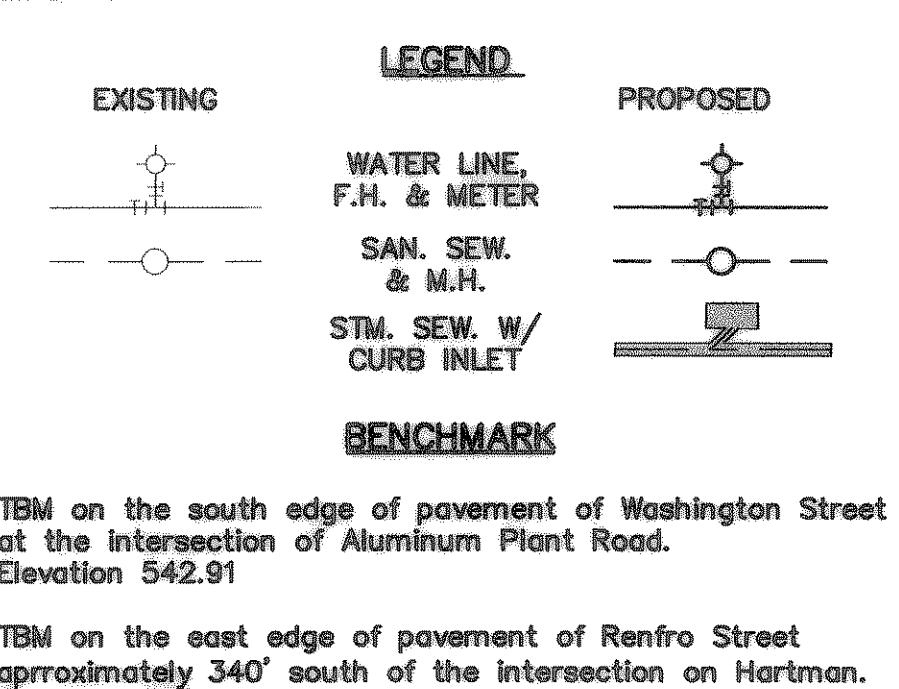
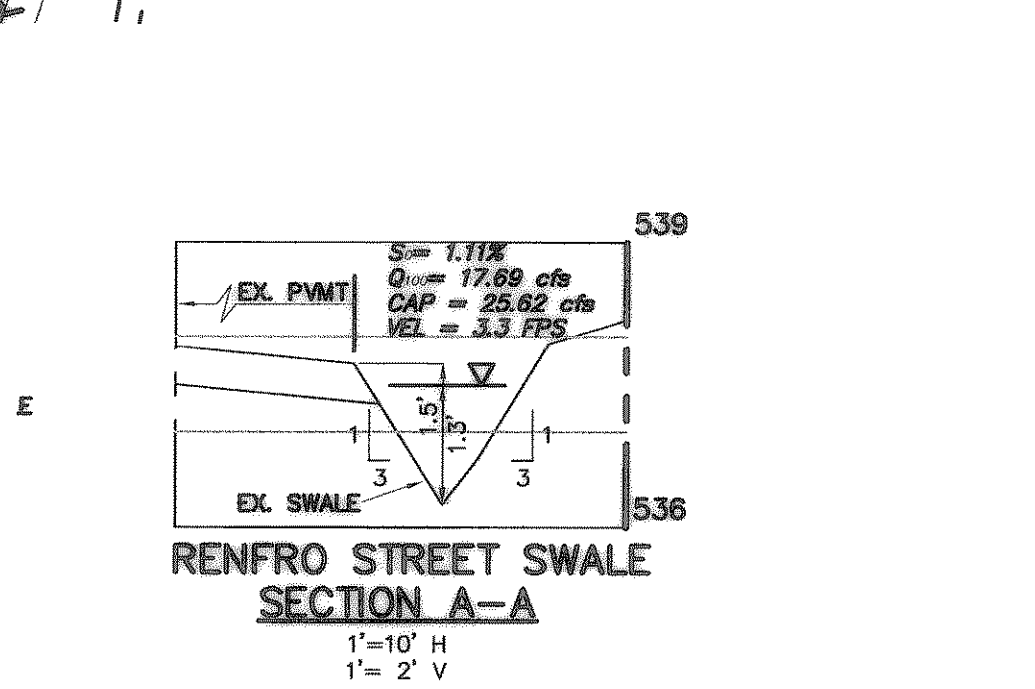
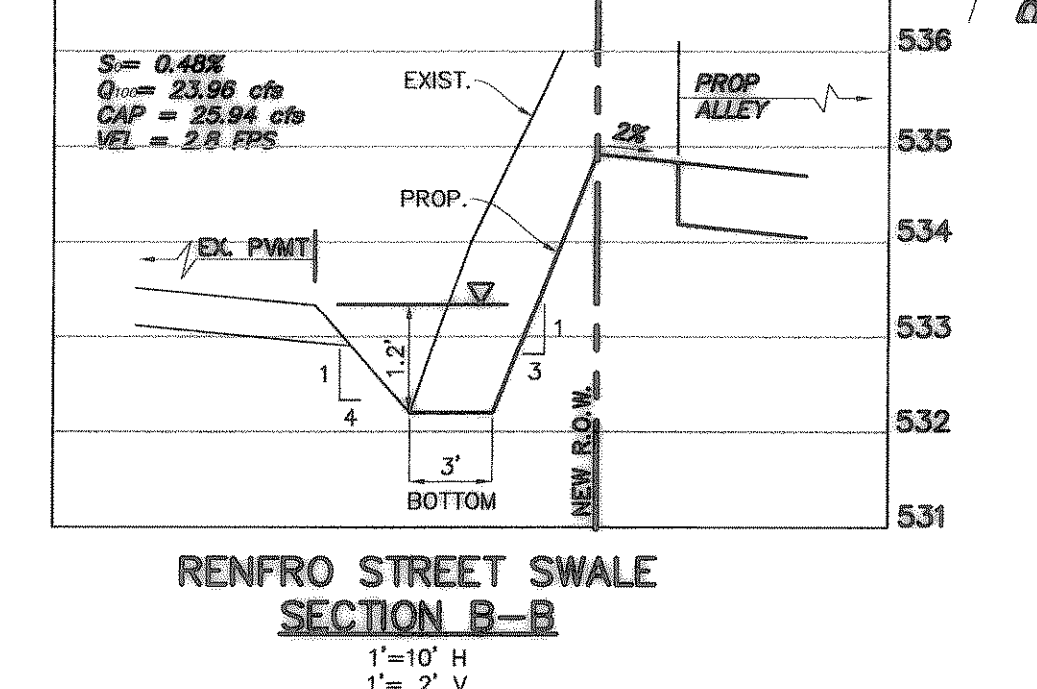
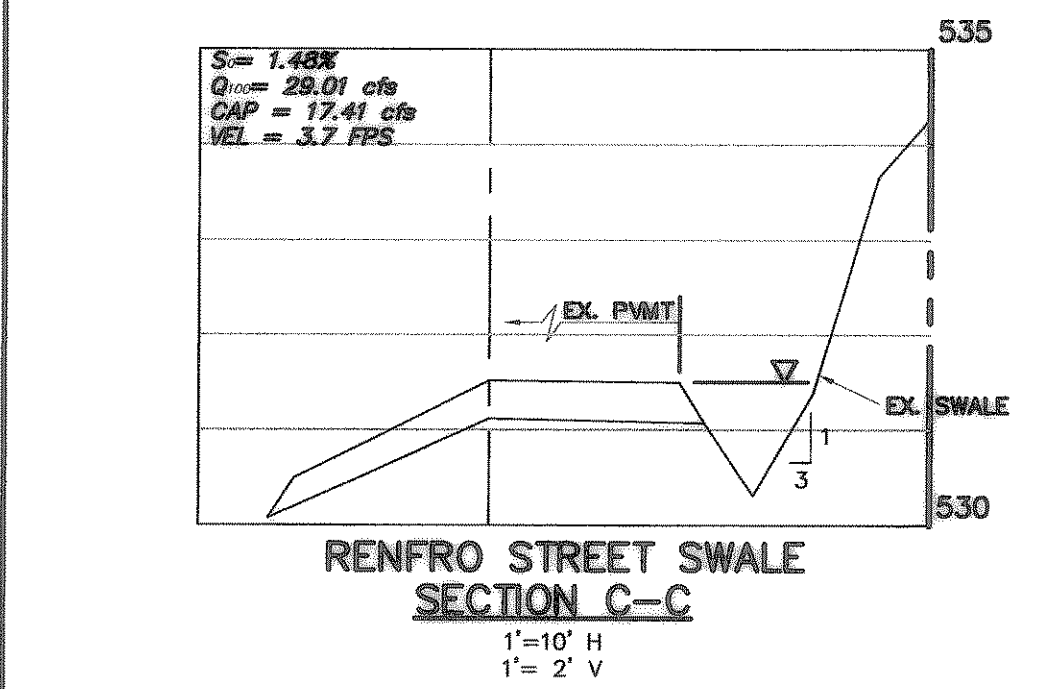
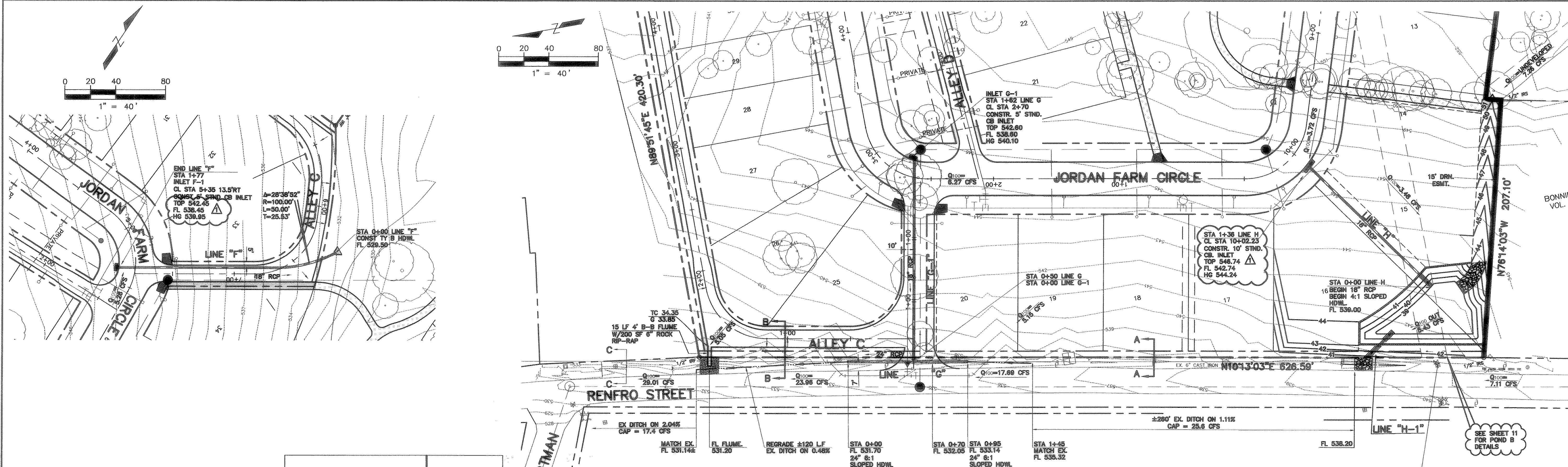
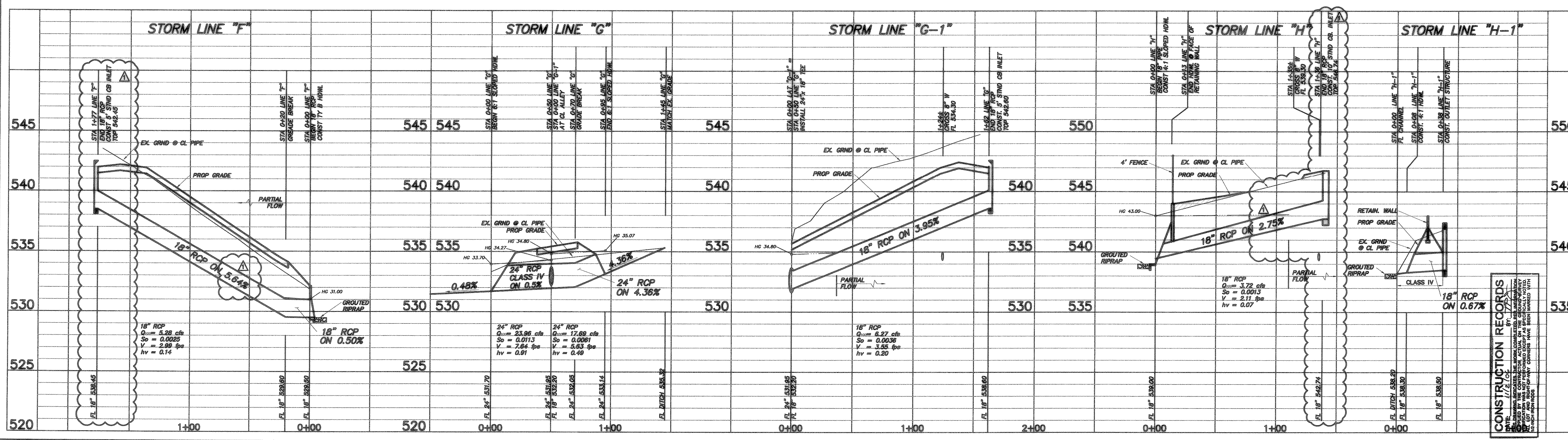


T:\S\Land Projects\2004\293-07.dwg\01C12STORM.dwg 8/18/2005 3:59:14 PM CST



- NOTES**
- See Sht. 1 for General Notes, Typical Sections and Overflow Flume Detail.
  - See Sht. 9 for Drainage Calculations.
  - See Sht. 10 for Pond A Detention Details.
  - See Shts. 16-22 for Inlet Plans & Profiles.
  - See Shts. 23-25 for additional site grading.
  - See Sht. 26 for Enlarged Plan of Culvert and grading around Storm Line "B".
  - See shts L1-L3 for Tree Removal.
  - All construction per City of Rockwall Public Works Standards and Details.
  - Outfall structures to be staked in the field, then have City Engineer approve location.
  - All outfall structures shall have grouted riprap. See detail Sht. 1.
  - All RCP shall be Class III unless otherwise shown in profile.



**CONSTRUCTION RECORDS**  
 THESE RECORDS SHALL BE MAINTAINED BY THE CONTRACTOR AND SUBMITTED TO THE ENGINEER FOR REVIEW AND APPROVAL. THE CONTRACTOR SHALL BE RESPONSIBLE FOR CORRECTING ANY ERRORS OR OMISSIONS. THESE RECORDS SHALL BE MAINTAINED THROUGHOUT THE LIFE OF THE PROJECT.

Scale: 1" = 40'  
 Designed by: T.P.J.  
 Drawn by: R.W.A.  
 Checked by: T.P.J.  
 /dwg/293-07/01C01PAVING.dwg  
 Date: 08/18/05 15:59

**SHEET 14**  
 OF

**PARK PLACE - WEST PHASE II**  
**STORM SEWER LINES "F", "G" & "H"**

THE SEAL APPEARING ON THIS DRAWING IS THE PROPERTY OF THOMAS P. JONES, P.E. 88877 ON 10/27/04

**TOMDEN ENGINEERING, L.L.P.**  
 12655 N. Central Expwy., Suite 1016  
 Dallas, Texas 75243  
 Ph: 972.386.6446 Fax: 972.386.6409  
 mail@tomden.com