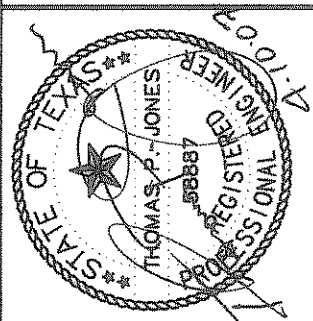




TP-1	TP-2	App.
03/27/08	PRIVATE LATERAL "D-4"	
08/08/08	LINE E INLETS & FLUME	

Revisions

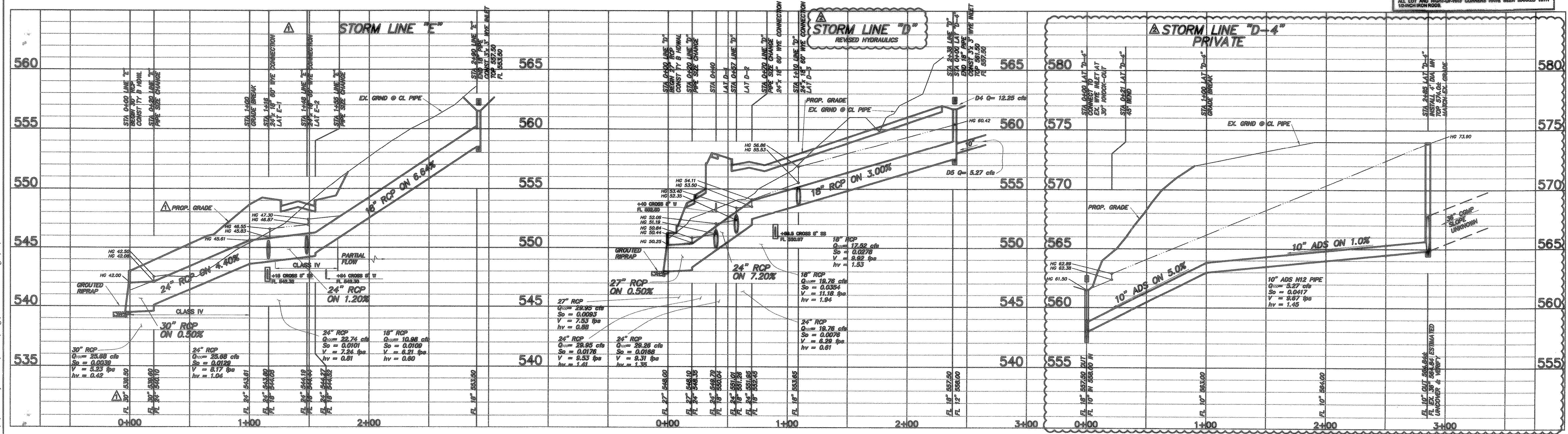
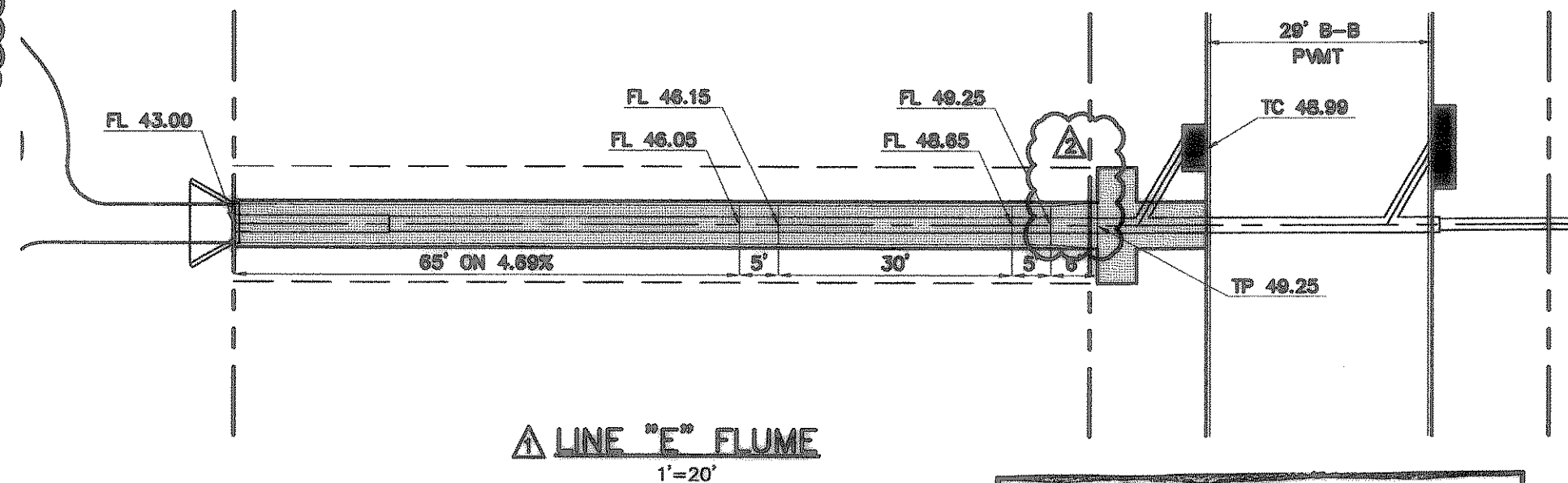


**PARK PLACE - WEST PHASE II**

THE SEAL APPEARING ON THIS DOCUMENT WAS AUTHORIZED BY THOMAS P. JONES, P.E. 5887, ON 10/10/04

OWNER: COLUMBIA EXTRUSION CORP. ROCKWALL, TX 75087 972.771-7108

**TOMDEN ENGINEERING, L.L.P.**  
 12855 N. Central Expwy., Suite 1010  
 Dallas, Texas 75243  
 Ph: 972.366.6446 Fax: 972.366.6409  
 mail@tomden.com



**STORM SEWER PLAN & PROFILE LINES "D" & "E"**

Scale: 1" = 40'

Designed by: T.P.J.  
 Drawn by: R.W.A.  
 Checked by: T.P.J.  
 /dwg/293-02/01COPAYING.dwg  
 Date: 04/10/07 10:11

SHEET 3 OF