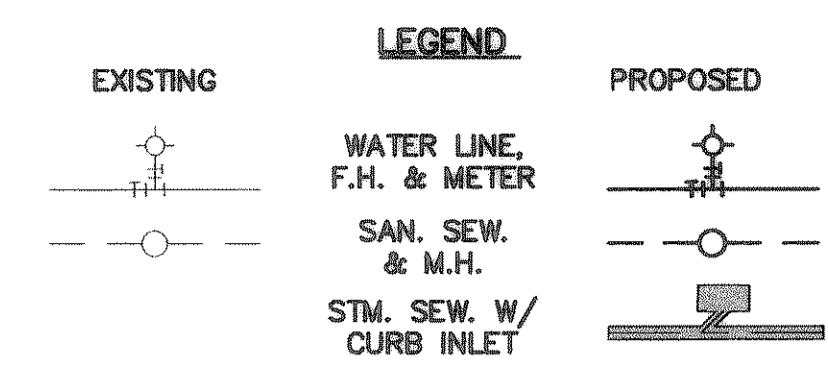
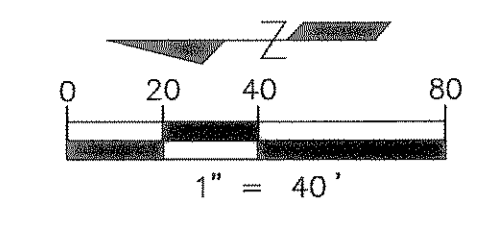
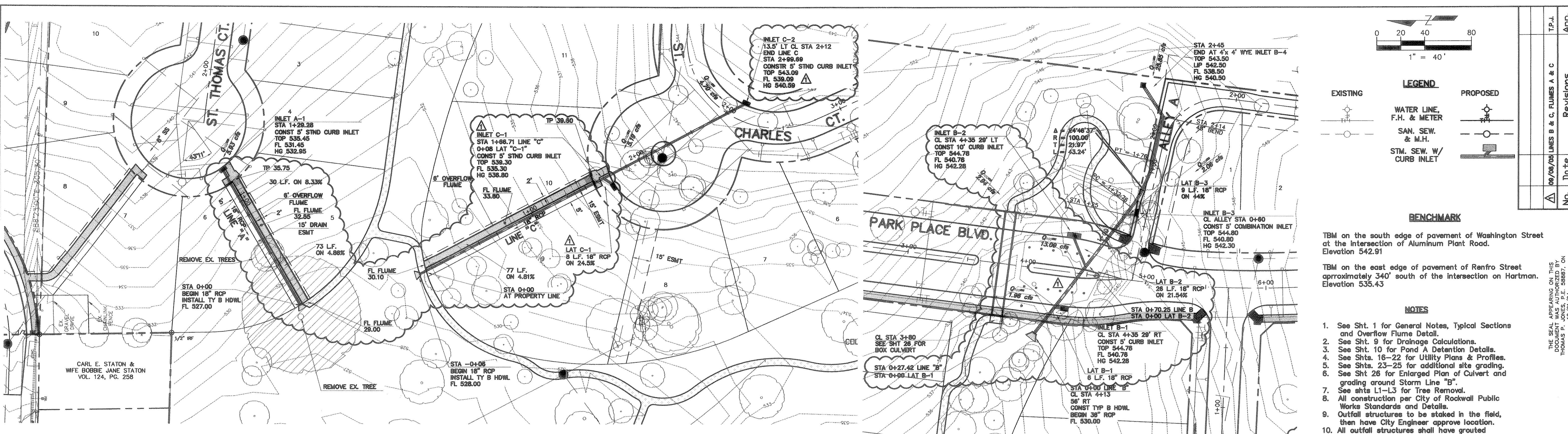


T:\SV\Land Projects\2004\293-07.dwg (01/25/2005 9:20:52 AM CST)



**BENCHMARK**

TBM on the south edge of pavement of Washington Street at the intersection of Aluminum Plant Road. Elevation 542.91

TBM on the east edge of pavement of Ranfro Street approximately 340' south of the intersection on Hartman. Elevation 535.43

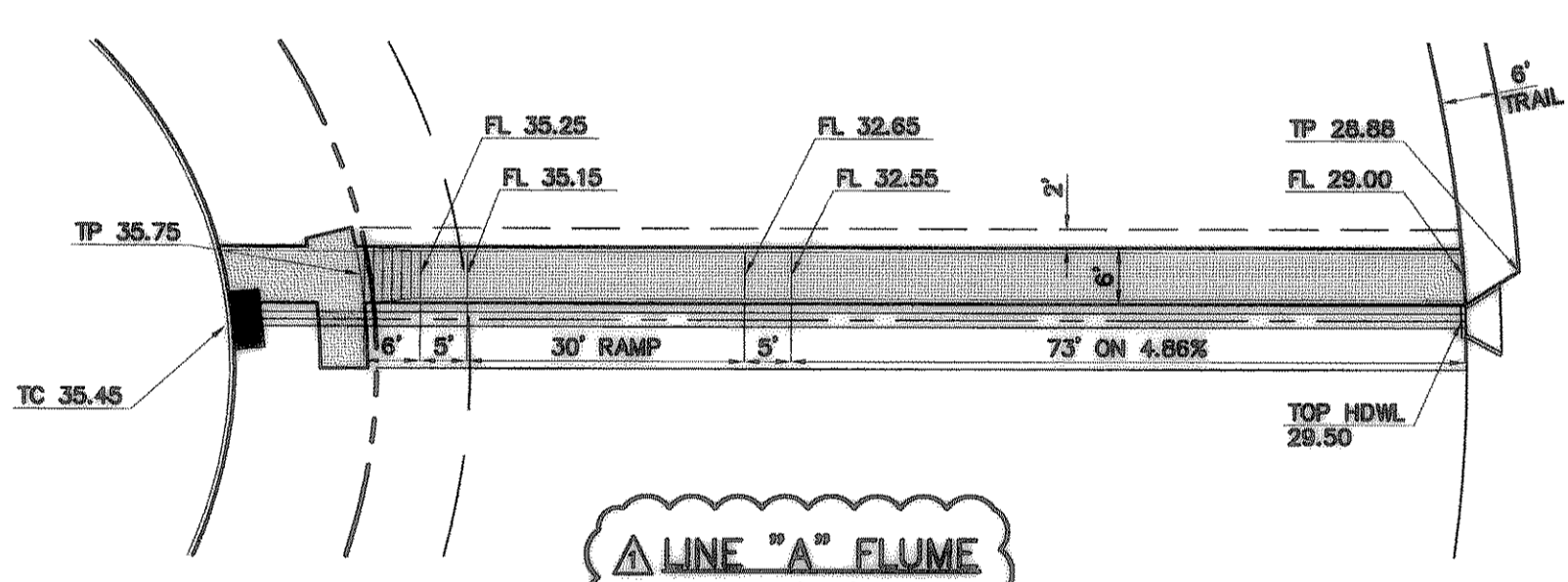
**NOTES**

- See Sht. 1 for General Notes, Typical Sections and Overflow Flume Detail.
- See Sht. 9 for Drainage Calculations.
- See Sht. 10 for Pond A Detention Details.
- See Shts. 18-22 for Utility Plans & Profiles.
- See Shts. 23-25 for additional site grading.
- See Sht 26 for Enlarged Plan of Culvert and grading around Storm Line "B".
- See shts L1-L3 for Tree Removal.
- All construction per City of Rockwall Public Works Standards and Details.
- Outfall structures to be staked in the field, then have City Engineer approve location.
- All outfall structures shall have grouted riprap. See detail Sht. 1.
- All RCP shall be Class III unless otherwise shown in profile.

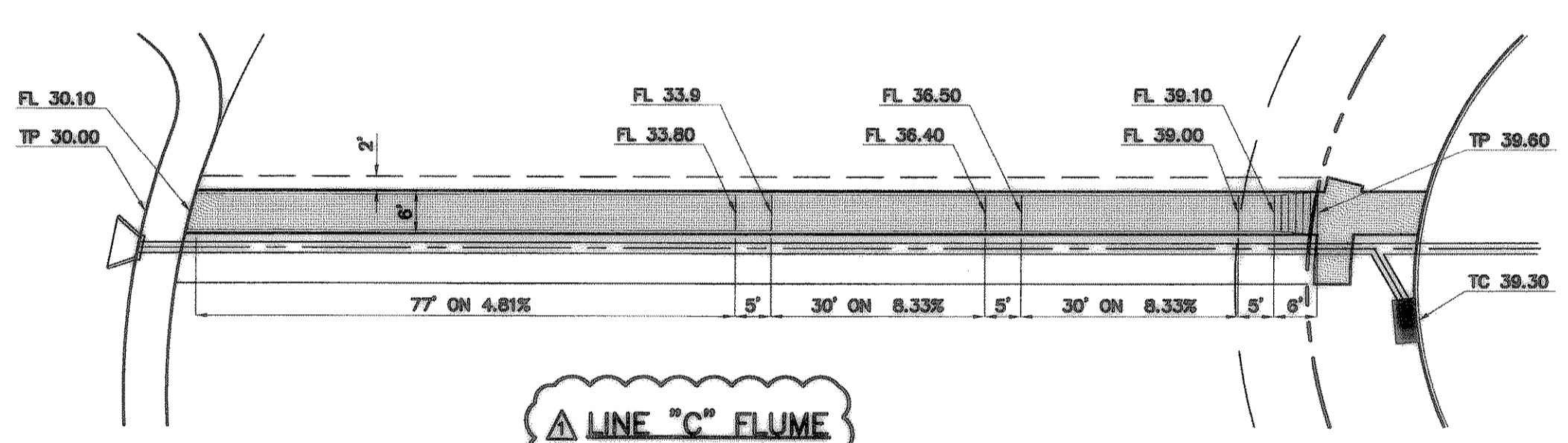
**STORM LINE "A" ST. THOMAS COURT**

**STORM LINE "C" ST. CHARLES COURT**

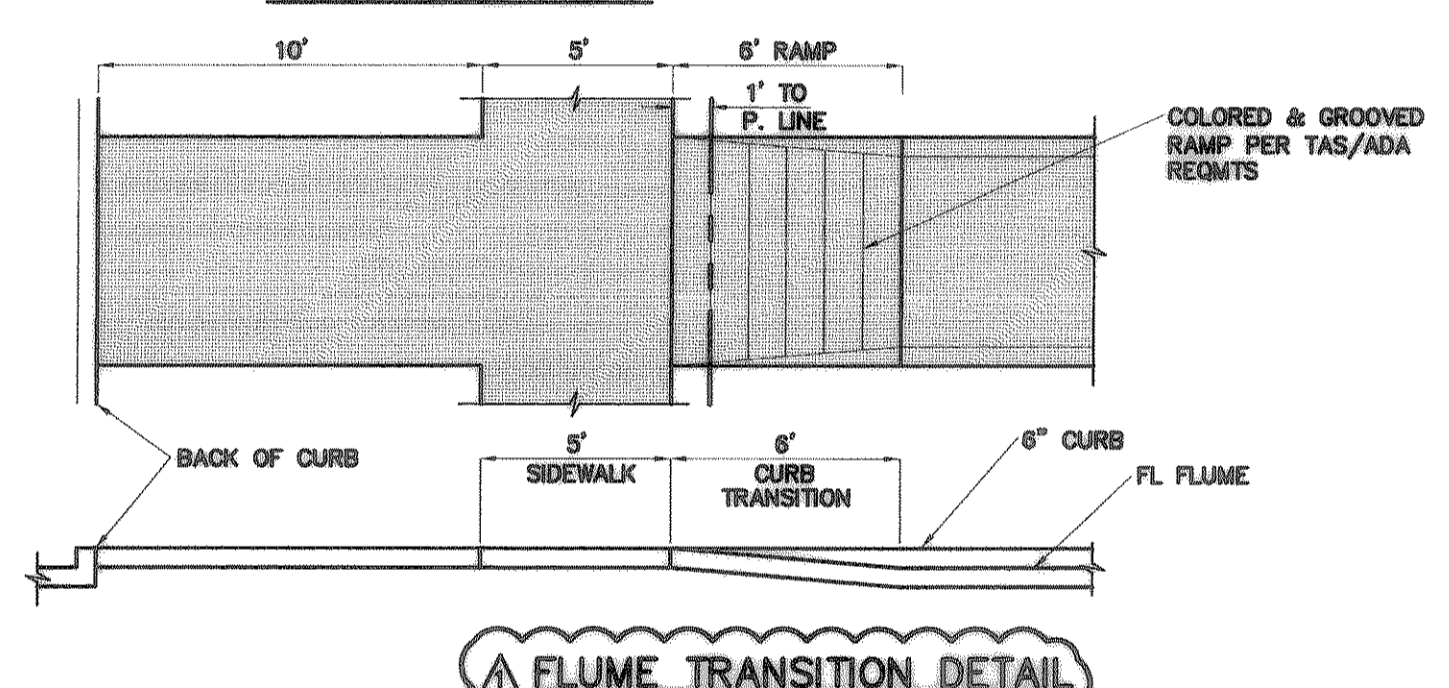
**STORM LINE "B" PARK PLACE BLVD**



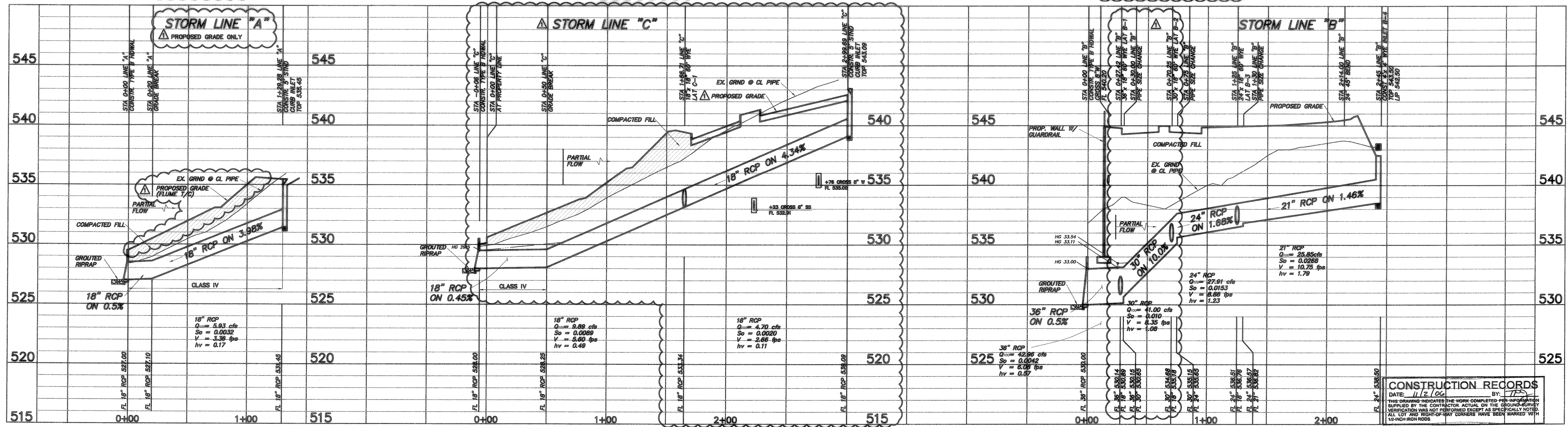
**LINE "A" FLUME 1"=20'**



**LINE "C" FLUME 1"=20'**



**FLUME TRANSITION DETAIL 1"=5'**



**CONSTRUCTION RECORDS**

DATE: 11/2/04 BY: TJS

THIS DRAWING INDICATES THE WORK COMPLETED PER INFORMATION SUPPLIED BY THE CONTRACTOR ACTUAL ON THE GROUND SURVEY VERIFICATION WAS NOT PERFORMED EXCEPT AS SPECIFICALLY NOTED. ALL LOT AND RIGHT-OF-WAY CORNERS HAVE BEEN MARKED WITH 1/2" X 1/2" IRON NAILS.

**TOMDEN ENGINEERING, L.L.P.**  
 12655 N. Central Expwy., Suite 1016  
 Dallas, Texas 75243  
 Ph: 972.386.6446 Fax: 972.386.6409  
 mail@tomden.com

**PARK PLACE - WEST PHASE II**

**STORM SEWER PLAN & PROFILE LINES "A", "B" & "C"**

Scale: 1" = 40'

Designed by: T.P.J.  
 Drawn by: R.V.A.  
 Checked by: T.P.J.  
 /dwg/293-02/TCOTPA/ING.dwg  
 Date: 09/08/05 09:21

SHEET 12 OF

Revisions

No.	Date	Revisions

THE SEAL APPEARING ON THIS DOCUMENT WAS AUTHORIZED BY ENGINEER P. 10/07/04