

TP.A.	TP.L.	TP.U.	App.
10/09/06	STATION	DRIVEWAY DRAIN	
02/22/08	REVISED	WALKWAY WIDTHS	
03/22/08	ADDED	ROLLOVER CURB	

Revisions

No. Date

TOMDEN ENGINEERING, L.L.P.
 12655 N. Central Expwy., Suite 1016
 Dallas, Texas 75243
 Ph: 972.386.6446 Fax: 972.386.6409
 mail@tomden.com

Project: **Park Place** Project No.: **23909**

Subject: **STATION DRAIN** Designed By: **TPS**

Scale: 1" = 40'

DATE: 11/2/06 BY: TPS

THIS DRAWING INDICATES THE WORK COMPLETED PER INFORMATION SUPPLIED BY THE CONTRACTOR. ACTUAL OR THE GROUND SURVEY VERIFICATION WAS NOT PERFORMED EXCEPT AS SPECIFICALLY NOTED. ALL LOT AND RIGHT-OF-WAY CORNERS HAVE BEEN MARKED WITH 10-INCH IRON RODS.

CONSTRUCTION RECORDS

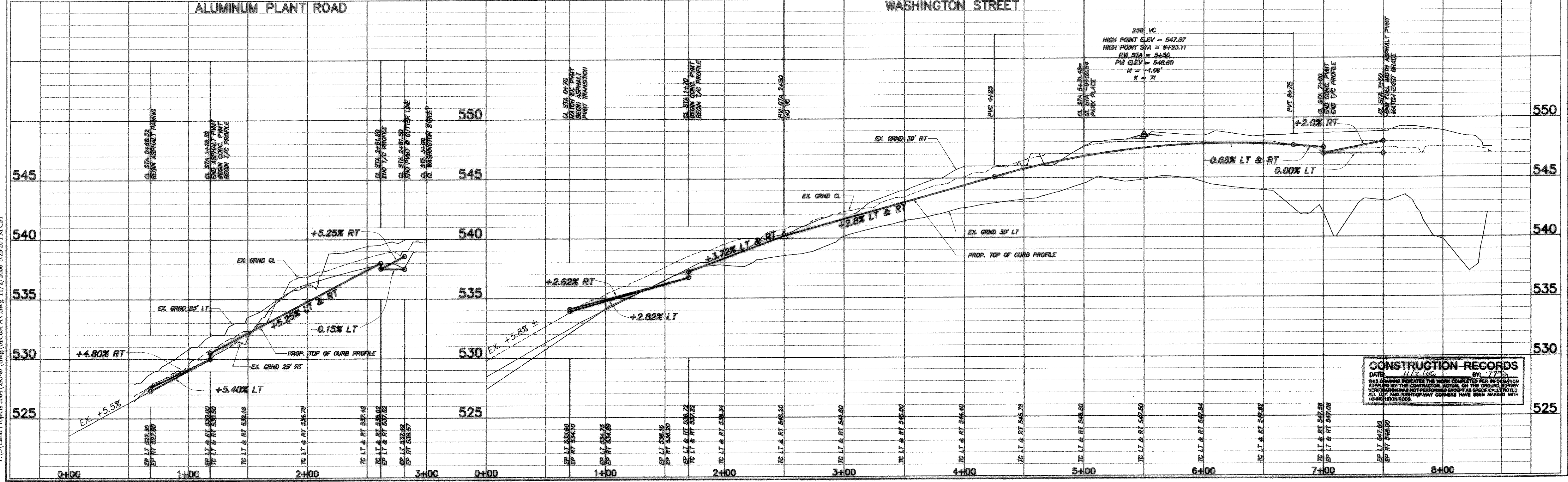
Scale: 1" = 40'

Designed by: T.P.J.

Drawn by: R.V.A.

Checked by: T.P.J.

Date: 11/02/06 17:23



T:\S\Land Projects 2004\295-07.dwg (VIC03FAY.dwg 11/2/2006 5:23:20 PM CST)

PARK PLACE - WEST

PHASE II

ALUMINUM PLANT ROAD

& WASHINGTON STREET

PLAN & PROFILE

Scale: 1" = 40'

Designed by: T.P.J.

Drawn by: R.V.A.

Checked by: T.P.J.

Date: 11/02/06 17:23

SHEET 3