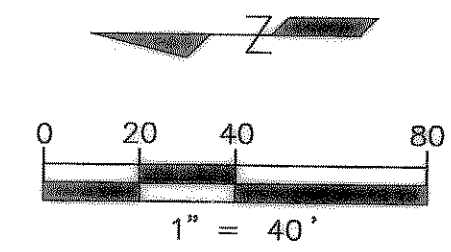
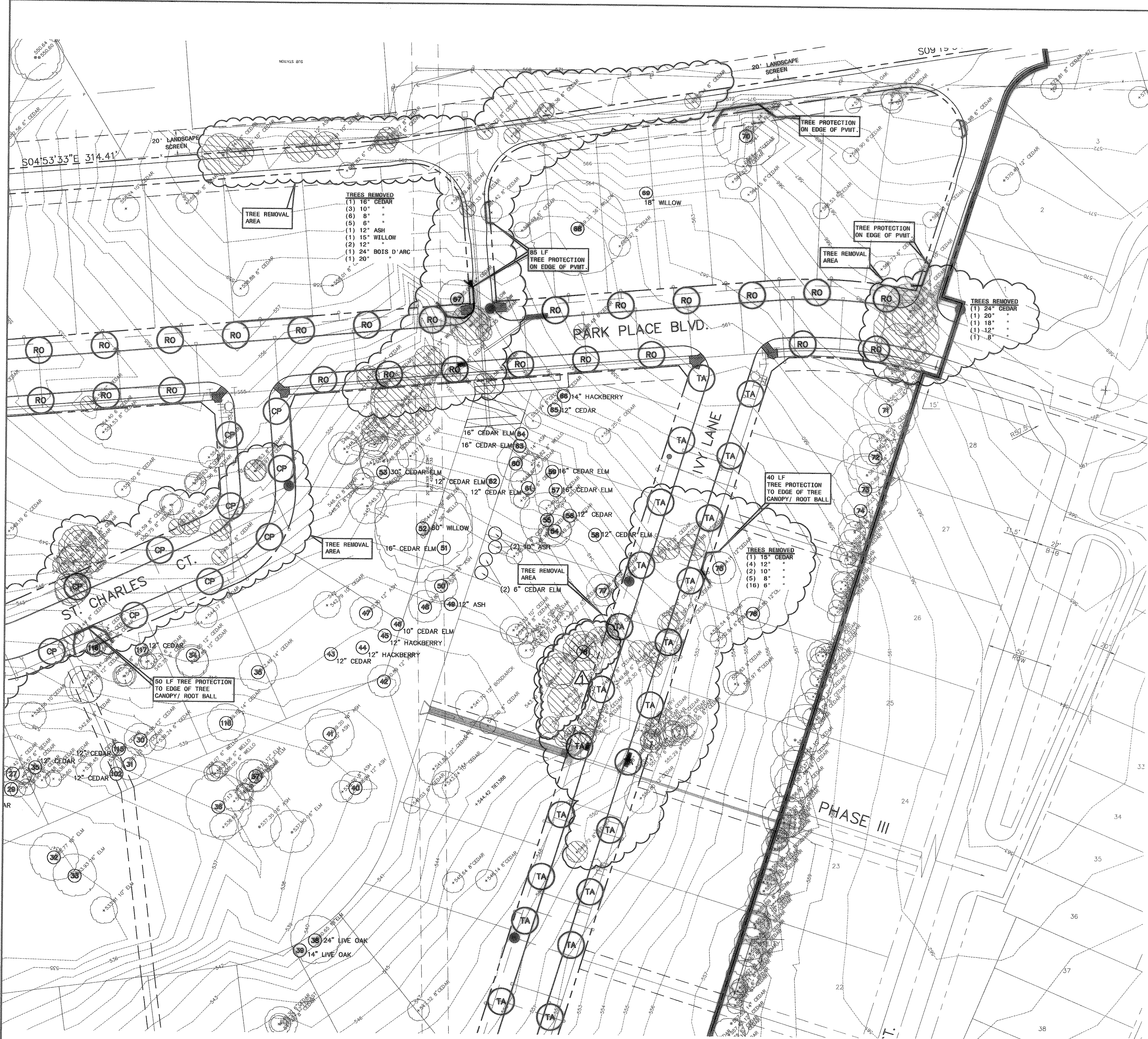


T:\S\Land Projects\2004\293-07.dwg\0101LAND.dwg 8/31/2005 9:27:57 AM CST



EXISTING	PROPOSED
---	---
---	---
---	---
---	---
---	---
---	---
---	---
---	---
---	---

PLANT SCHEDULE	PLANT MATERIALS	PLANTING REQUIREMENTS		
Quantity	Symbol	Common Name	Scientific Name	Size/Height/Remarks
14	LO	Live Oak	Quercus virginiana	3" cal. min., 10'-12', Straight Trunk
12	CO	Chinkapin Oak	Quercus muhlenbergii	3" cal. min., 10'-12', Straight Trunk
75	TA	Texas Ash	Fraxinus texensis	3" cal. min., 12'-14', Straight Trunk
44	RO	Texas Red Oak	Quercus texana	3" cal. min., 10'-12', Straight Trunk
21	CP	Chinese Pistachio	Pistacia chinensis	3" cal. min., 10'-12', Straight Trunk
	○	Preserved Tree		
	⊘	Removed Tree		
	□	Tree Protection		
	①	Assigned tree numbers as tagged in field 08/01/05		

- LANDSCAPE NOTES**
- QUANTITIES INDICATED ON PLANT LIST ARE LANDSCAPE DESIGNER'S ESTIMATE ONLY AND SHOULD BE VERIFIED PRIOR TO BIDDING. CONTRACTOR IS RESPONSIBLE FOR BIDDING AND PROVIDING QUANTITY OF PLANTS REQUIRED AT SPACING DESIGNATED FOR BED SIZES AND CONFIGURATIONS SHOWN ON PLANS REGARDLESS OF QUANTITIES DESIGNATED ON PLANT SCHEDULE.
  - CONTRACTOR SHALL NOTIFY LANDSCAPE DESIGNER OF ANY DISCREPANCIES, AMBIGUITY OR UNLABELED PLANTS ON PLANS PRIOR TO BID SUBMITTAL. IF DISCREPANCIES, AMBIGUITY OR UNLABELED PLANTS ARE NOT CLARIFIED BY LANDSCAPE DESIGNER PRIOR TO BID SUBMITTAL DATE, CONTRACTOR SHALL NOTE SUCH ITEMS ON BID.
  - SOIL AMENDMENTS TO BE "MIXED SOIL WITH COMPOST" AS PRODUCED BY LIVING EARTH TECHNOLOGY, OR APPROVED EQUAL.
  - ALL HOLES FOR TREES AND LARGE SHRUBS SHALL BE TESTED FOR WATER RETENTION PRIOR TO TREE OR SHRUB PLANTING. AFTER HOLE IS EXCAVATED, IT IS TO BE FILLED WITH WATER TO THE TOP OF THE EXCAVATION. IF, AFTER 24 HOURS, THE HOLE STILL HOLDS WATER, THE CONTRACTOR SHALL EXCAVATE AN ADDITIONAL 6" FROM THE BOTTOM OF THE HOLE. THE LANDSCAPE CONTRACTOR SHALL THEN INSTALL 6" OF NATIVE WASHED GRAVEL COVERED ON THE TOP (AND UP TO A MINIMUM OF 12" ON THE SIDES OF THE HOLE) WITH FILTER FABRIC. THE CONTRACTOR SHALL ALSO INSTALL A CAPPED 3" DIAMETER PVC SUMP WHICH WILL EXTEND FROM NEAR THE BOTTOM OF THE ROCK LAYER TO 3" ABOVE THE PROPOSED FINISH GRADE SO THE HOLE CAN BE EXCAVATED THROUGH MECHANICAL MEANS.
  - TREE HOLES TO BE EXCAVATED 2" GREATER THAN BALL DIAMETER. BACKFILL NATIVE SOIL.
  - ALL PLANTING (TREES, SHRUBS, GROUNDCOVER, AND/OR GRASS APPLICABLE, TO BE GUARANTEED FOR A PERIOD OF ONE YEAR AFTER FINAL ACCEPTANCE.
  - ALL TREES ARE TO BE PLANTED NO LESS THAN 5' FROM ANY UTILITY LINE, EXISTING OR PROPOSED, AS SHOWN ON PLAN.
  - EXISTING TREES THAT ARE BEING PRESERVED SHALL BE PROTECTED DURING CONSTRUCTION. SEE TREE PRESERVATION NOTES THIS SHEET.
  - SEE SHEET L3 FOR TREE MITIGATION SUMMARY.

- TREE PRESERVATION NOTES**
- CONTRACTOR AND DEVELOPER SHALL ADHERE TO THE FOLLOWING TREE PROTECTION MEASURES:
- PRIOR TO GRADING, BRUSH REMOVAL OR CONSTRUCTION, THE DEVELOPER SHALL CLEARLY TAG OR MARK ALL TREES TO BE PRESERVED.
  - "TREE PROTECTION"  
THE DEVELOPER SHALL ERECT A PLASTIC MESH FENCE A MINIMUM OF (4') FOUR FEET IN HEIGHT AROUND EACH TREE OR GROUP OF TREES TO PREVENT THE PLACEMENT OF DEBRIS OR FILL WITHIN THE DRIP LINE.
  - DURING THE CONSTRUCTION PHASE OF DEVELOPMENT, THE DEVELOPER SHALL PROHIBIT CLEANING, PARKING OR STORAGE OF EQUIPMENT OR MATERIALS UNDER THE CANOPY OF ANY TREE OR GROUP OF TREES BEING PRESERVED. THE DEVELOPER SHALL NOT ALLOW THE DISPOSAL OF ANY WASTE MATERIAL SUCH AS, BUT NOT LIMITED TO, PAINT, OIL, SOLVENTS, ASPHALT, CONCRETE, MORTAR, ETC. IN THE CANOPY AREA.
  - NO ATTACHMENTS OR WIRES OF ANY KIND, OTHER THAN THOSE OF A PROTECTIVE NATURE, SHALL BE ATTACHED TO ANY TREE.
  - NO FILL OR EXCAVATION MAY OCCUR WITHIN THE DRIP LINE OF A TREE TO BE PRESERVED UNLESS THERE IS A SPECIFIC APPROVED PLAN FOR USE OF THE TREE WELLS OR RETAINING WELLS. MAJOR CHANGES OF GRADE (6" OR GREATER) WILL REQUIRE ADDITIONAL MEASURES TO MAINTAIN PROPER OXYGEN AND WATER EXCHANGE WITH THE ROOTS. IN ADDITION, THE DEVELOPER SHOULD ADHERE TO THE FOLLOWING GUIDELINES TO PROTECT THE TREE OR GROUP OF TREES TO BE PRESERVED:
    - WITH MAJOR GRADE CHANGES, A REINFORCED RETAINING WALL OR TREE WELL OF A DESIGN APPROVED BY THE CITY SHOULD BE CONSTRUCTED AROUND THE TREE NO CLOSER THAN HALF THE DISTANCE BETWEEN THE TRUNK AND THE DRIP LINE. THE RETAINING WALL SHOULD BE CONSTRUCTED SO AS TO MAINTAIN THE EXISTING GRADES AROUND A TREE OR GROUP OF TREES.
    - AT NO TIME SHOULD A WALL, PAVEMENT OR POROUS PAVEMENT BE PLACED CLOSER THAN (3') THREE TO THE TRUNK OF AN EXISTING OR NEW TREE.
    - ROOT PRUNING MAY BE NECESSARY WHEN THE CRITICAL ROOT ZONE IS TO BE DISTURBED.
    - IF A PATIO, SIDEWALK, DRIVE, PARKING LOT OR OTHER PAVED SURFACE MUST BE PLACED WITHIN THE DRIP LINE OF AN EXISTING TREE, MATERIAL SUCH AS A POROUS PAVEMENT OR OTHER APPROVED CONSTRUCTION METHOD THAT WILL ALLOW THE PASSAGE OF WATER AND OXYGEN MAY BE REQUIRED.

J.K.A.	J.K.A.	App.
REMOVED TREES	ADDED TREE NUMBERS	Revisions
8/31/05	9/9/05	No. Date

**TOMDEN ENGINEERING, L.L.P.**  
 12655 N. Central Expwy., Suite 1016  
 Dallas, Texas 75243  
 Ph: 972.386.6446 Fax: 972.386.6409  
 mail@tomden.com

**PARK PLACE - WEST  
 PHASE II  
 TREESCAPE PLAN  
 AREA II**

Scale: 1" = 40'  
 Designed by: J.K.A.  
 Drawn by: CAD  
 Checked by: J.K.A.  
 /dwg/293-07/0102LAND.dwg  
 Date: 06/27/05 14:17