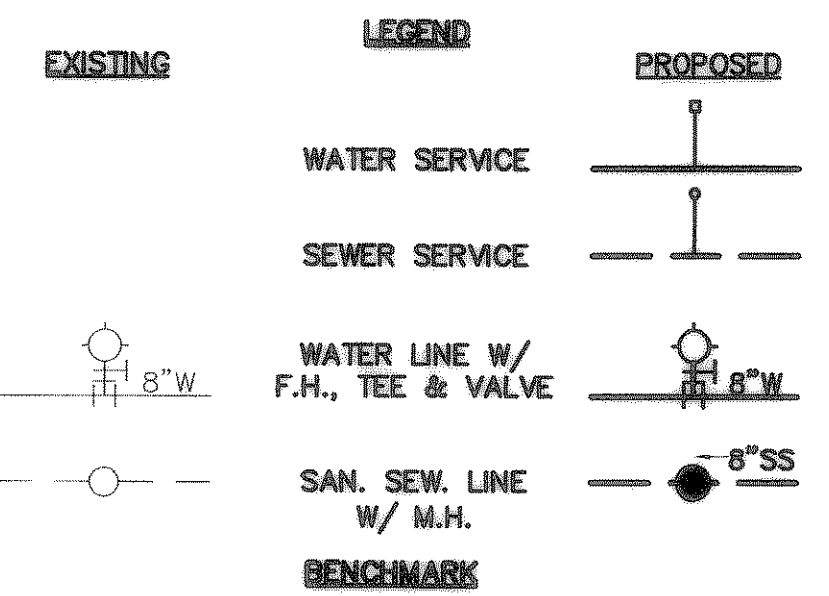
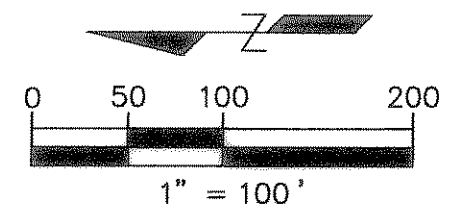
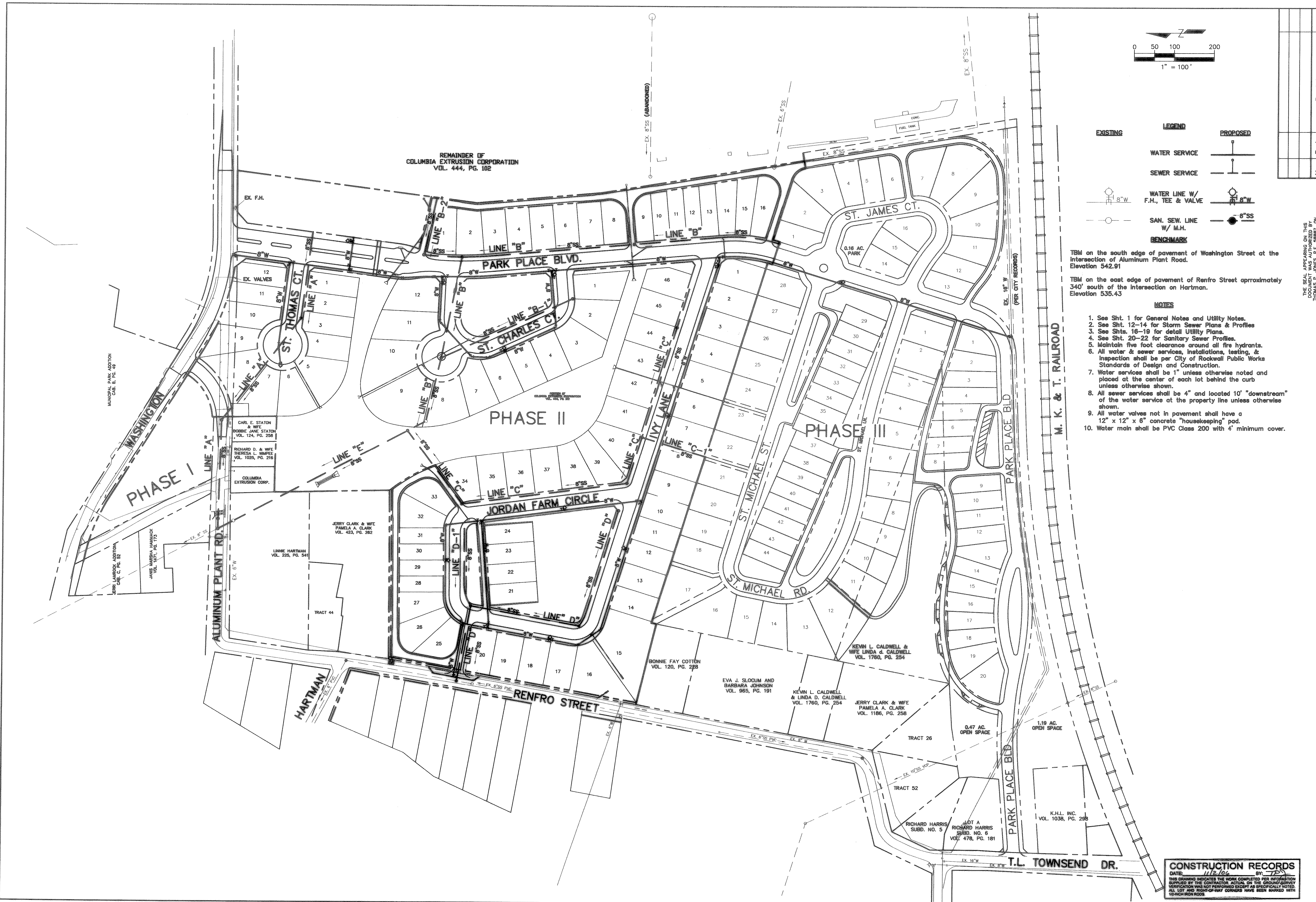


S:\Land Projects\2004\295-07.dwg,01C151W&SS.dwg 5/18/2005 1:28:39 PM CST



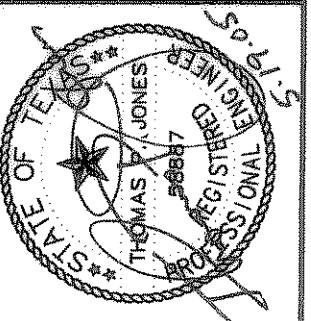
TBM on the south edge of pavement of Washington Street at the intersection of Aluminum Plant Road. Elevation 542.91

TBM on the east edge of pavement of Renfro Street approximately 340' south of the intersection on Hartman. Elevation 535.43

- NOTES**
- See Sht. 1 for General Notes and Utility Notes.
 - See Sht. 12-14 for Storm Sewer Plans & Profiles
 - See Shts. 16-19 for detail Utility Plans.
 - See Sht. 20-22 for Sanitary Sewer Profiles.
 - Maintain five foot clearance around all fire hydrants.
 - All water & sewer services, installations, testing, & inspection shall be per City of Rockwall Public Works Standards of Design and Construction.
 - Water services shall be 1" unless otherwise noted and placed at the center of each lot behind the curb unless otherwise shown.
 - All sewer services shall be 4" and located 10' "downstream" of the water service at the property line unless otherwise shown.
 - All water valves not in pavement shall have a 12" x 12" x 6" concrete "housekeeping" pad.
 - Water main shall be PVC Class 200 with 4' minimum cover.

No.	Date	Revisions	App.

THE SEAL APPEARING ON THIS DOCUMENT WAS AUTHORIZED BY THOMAS P. JONES, 10/26/04



TOMDEN ENGINEERING, L.L.P.
 12855 N. Central Expwy., Suite 1016
 Dallas, Texas 75243
 Ph: 972.386.6446 Fax: 972.386.6409
 mail@tomden.com

PARK PLACE - WEST PHASE II

OVERALL UTILITY PLAN

Scale: 1" = 100'
 Designed by T.P.J.
 Drawn by R.W.A.
 Checked by T.P.J.
 /ewg/293-02/01C151W&SS.dwg
 Date: 05/18/05 13:28

CONSTRUCTION RECORDS
 DATE: 1/12/06 BY: T.P.J.
 THIS DRAWING INDICATES THE WORK COMPLETED PER INFORMATION SUPPLIED BY THE CONTRACTOR ACTUAL ON THE GROUND SURVEY VERIFICATION WAS NOT PERFORMED EXCEPT AS SPECIFICALLY NOTED. ALL LOT AND RIGHT-OF-WAY CORNERS HAVE BEEN MARKED WITH BENCHMARK RODS.