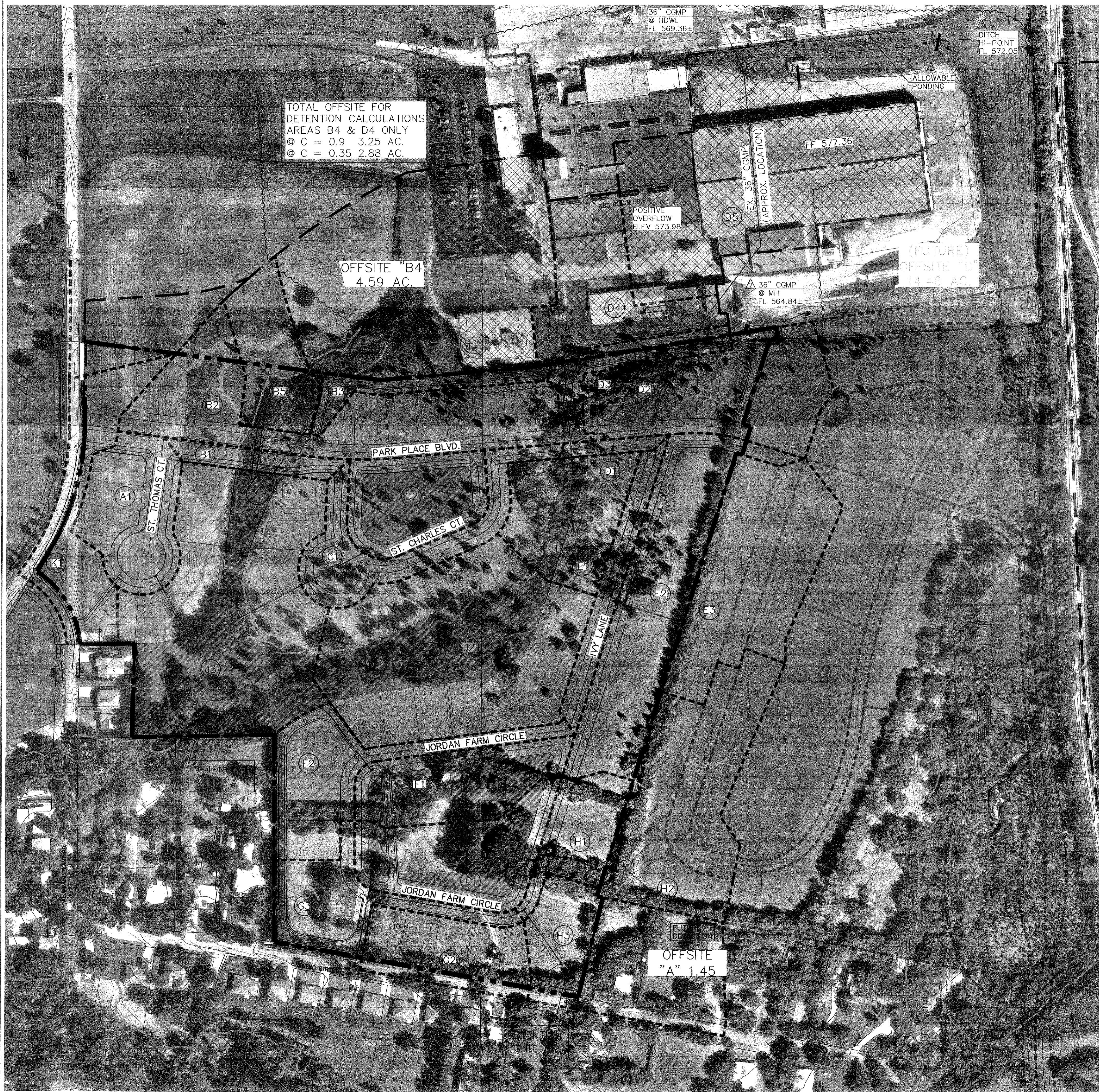


T:\S\Projects\2004\293-07.dwg\01C09DAMAP.dwg 3/28/2006 5:48:50 PM CST

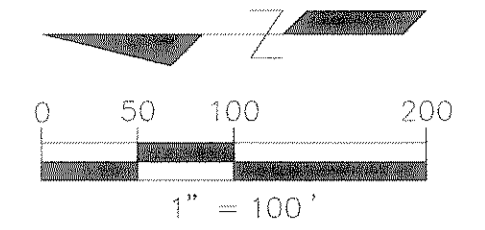


TOTAL OFFSITE FOR  
DETENTION CALCULATIONS  
AREAS B4 & D4 ONLY  
@ C = 0.9 3.25 AC.  
@ C = 0.35 2.88 AC.

OFFSITE "B4"  
4.59 AC.

(FUTURE)  
OFFSITE "C"  
14.46 AC

OFFSITE  
"A" 1.45



**LEGEND**

- DRAINAGE DIVIDE
- FUTURE DRAINAGE DIVIDE
- FLOW ARROW
- FLOODPLAIN
- 560' CONTOURS PER SURVEY
- CONTOURS PER AERIAL
- PROPOSED STORM SEWER
- ▨ CURRENT INDUSTRIAL USE
- ▨ PROPOSED PARKLAND/OPEN SPACE

**DRAINAGE AREA CALCULATIONS**

DA	AREA	CA	Tc	1100	Q 100	INLET #	COMMENT	
PARK	S. FAM	IND						
C=0.35	C=0.50	C=0.9						
A1	1.21	0.61	10	9.8	5.93	A1	TO LOW POINT CURB INLET	
B1	0.40	0.20	10	9.8	1.96	B1	TO LOW POINT CURB INLET	
B2	2.56	1.28	10	9.8	12.59	B2	TO LOW POINT CURB INLET	
B3	0.42	0.21	10	9.8	2.06	B3	TO COMBINATION ALLEY INLET	
B4	2.88	1.86	2.64	10	9.8	25.85	B4	TO INLET B-4
B5	0.99	0.50	10	9.8	4.85	NA	THRU BOX CULVERT	
C1	1.06	0.53	10	9.8	5.19	C1	TO LOW POINT CURB INLET	
C2	0.61	0.53	0.48	10	9.8	4.70	C2	TO LOW POINT CURB INLET
D1	0.14	0.07	10	9.8	0.69	D1	TO ON-GRADE CURB INLET	
D2	2.03	1.02	10	9.8	10.00	D2	TO ON-GRADE CURB INLET	
D3	0.14	0.36	0.23	10	9.8	2.24	D3	TO COMBINATION ALLEY INLET
D4		1.39	1.25	10	9.8	12.25	D4	TO WYE INLET
D5		4.58	4.12	10	9.8	40.40	D5	MANHOLE ON EX. 36" CGMP
E1	0.60	0.30	10	9.8	2.94	E1	TO LOW POINT CURB INLET	
E2	2.40	1.20	10	9.8	11.76	E2	TO LOW POINT CURB INLET	
E3	2.24	1.12	10	9.8	10.98	E3	TO WYE INLET	
F1	0.54	0.70	0.54	10	9.8	5.28	F1	TO LOW POINT CURB INLET
F2	1.34	0.67	10	9.8	6.57	-	OVERLAND RUNOFF TO ALLEY "C" & POND "A"	
G1	0.70	0.79	0.64	10	9.8	6.27	G1	TO LOW POINT CURB INLET
G2	1.05	0.53	10	9.8	5.15	-	OVERLAND RUNOFF TO CULVERT "G"	
G3	1.03	0.52	10	9.8	5.05	-	OVERLAND RUNOFF TO ALLEY "C" & RENFRO ST.	
H1	0.76	0.38	10	9.8	3.72	H1	TO ON-GRADE CURB INLET	
H2	2.50	1.25	10	9.8	12.25	-	TO DRAINAGE SWALE AND POND "B"	
H3	0.71	0.36	10	9.8	3.48	-	OVERLAND RUNOFF TO POND "B"	
J1	0.22	1.06	0.61	10	9.8	5.98	-	OVERLAND RUNOFF TO POND "A"
J2	1.40	2.44	1.71	10	9.8	16.76	-	OVERLAND RUNOFF TO POND "A"
J3	2.03	2.10	1.76	10	9.8	17.25	-	OVERLAND RUNOFF TO POND "A"
K1	1.29	0.65	10	9.8	6.32	-	OFFSITE TO ALUM. PLANT ROAD	

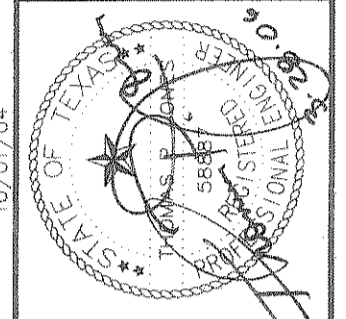
**INLET DESIGN CALCULATIONS**

INLET NO.	LOCATION	CARRY-OVER FROM				SELECTED				CARRY-OVER TO DOWNSTREAM		
		Q (c.f.s.)	INLET (c.f.s.)	FLOW (c.f.s.)	GUTTER CAPACITY (c.f.s.)	GUTTER SLOPE (ft./100ft.)	GROWN TYPE	REQUIRED LENGTH (ft.)	INLET LENGTH (ft.)		INLET CAPACITY (c.f.s.)	INLET TYPE
A1	ST. THOMAS CT.	5.93	0	5.93	LOW PT.	NA	NA	4'	5'	10.5	STND. LOW PT.	0
B1	STA 4+35 RT. PARK PL.	1.96	0	1.96	LOW PT.	NA	NA	4'	5'	10.5	LOW PT.	0
B2	STA 4+35 LT. PARK PL.	12.59	0.5	13.09	LOW PT.	NA	NA	6'	10'	21.0	LOW PT.	0
B3	ALLEY A STA 0+60	2.06	0	2.06	4 CFS	68%	ALLEY	4'	5'	2.7	COMBINATION	0
B4	OFFSITE	25.85	0	25.85	NA	NA	NA	16'	4'x4'	27.2	WYE INLET(0.75' HEAD)	0
C1	ST. CHARLES CT.	5.19	0	5.19	LOW PT.	NA	NA	4'	5'	10.5	STND. LOW PT.	0
D1	STA 10+00 RT. PARK PL.	0.69	0	0.69	22 CFS	1%	NORMAL	15.4'	5'	2.5	STND. INLET	0
D2	STA 10+60 LT. PARK PL.	10.00	0	10.00	22 CFS	1%	NORMAL	15.4'	15'	9.5	STND. INLET	0.5
D3	STA 0+45 ALLEY B	1.76	0	1.76	12 CFS	3.44%	ALLEY	3.7'	5'	2.3	COMBINATION	0
D4	OFFSITE	12.25	0	12.25	NA	NA	NA	9'	3'x3'	19.0	WYE INLET (0.5' HEAD)	0
E1	3+46 RT. IVY LN.	2.94	0	2.94	LOW PT.	NA	NA	4'	5'	10.5	STND. LOW PT.	0
E2	3+46 LT. IVY LN.	11.76	0	11.76	LOW PT.	NA	NA	6'	10'	21.0	STND. LOW PT.	0
E3	OFFSITE WYE INLET	10.98	0	10.98	NA	NA	NA	11'	3'x3'	12.0	WYE INLET (0.5' HEAD)	0
F1	STA 5+35 JORDAN FARM	5.28	0	5.28	LOW PT.	NA	NA	4'	5'	10.5	STND. INLET	0
G1	STA 2+70 JORDAN FARM	6.27	0	6.27	LOW PT.	NA	NA	4'	5'	10.5	STND. LOW PT.	0
H1	STA 10+02.23 IVY LN.	3.72	0	3.72	9 CFS	2.36%	NORMAL	7.5'	10'	5.4	STND. INLET	0

**CONSTRUCTION RECORDS**  
DATE: 11/2/06 BY: [Signature]  
THIS DRAWING INDICATES THE WORK COMPLETED PER INFORMATION SUPPLIED BY THE CONTRACTOR ACTUAL ON THE GROUND SURVEY VERIFICATION HAS NOT BEEN PERFORMED EXCEPT AS SPECIFICALLY NOTED ALL LOT AND RIGHT-OF-WAY CORNERS HAVE BEEN MARKED WITH 1/2-INCH IRON RODS

No.	Date	Revisions	App.
03/27/06	AREAS B4, D3, D4 & D5		T.P.J.
06/19/05	INLETS B1, B2, C2, E1 & E2		T.P.J.

**TOMDEN ENGINEERING, L.L.P.**  
12865 N. Central Expwy., Suite 1016  
Dallas, Texas 75243  
Ph: 972.386.6446 Fax: 972.386.6409  
mail@tomden.com



PARK PLACE - WEST  
PHASE II

DRAINAGE AREA MAP

Scale: 1" = 200'  
Designed by: T.P.J.  
Drawn by: R.W.A.  
Checked by: T.P.J.  
/cwg/293-07/01C09DAMAP.dwg  
Date: 03/28/06 17.46