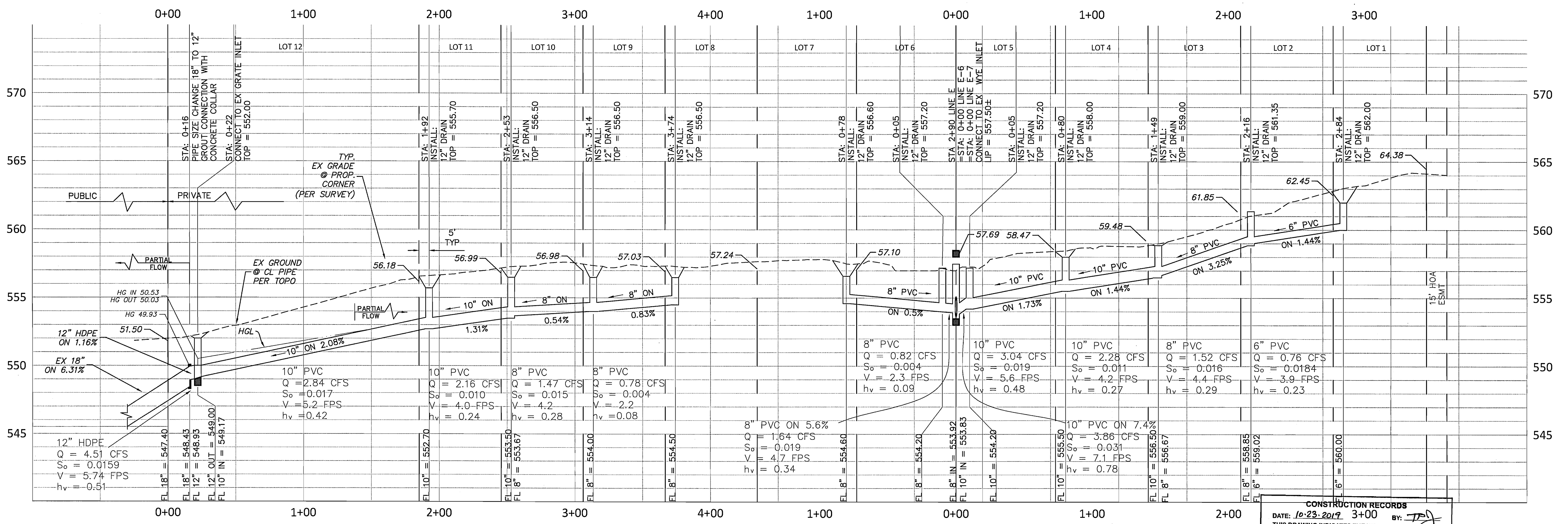
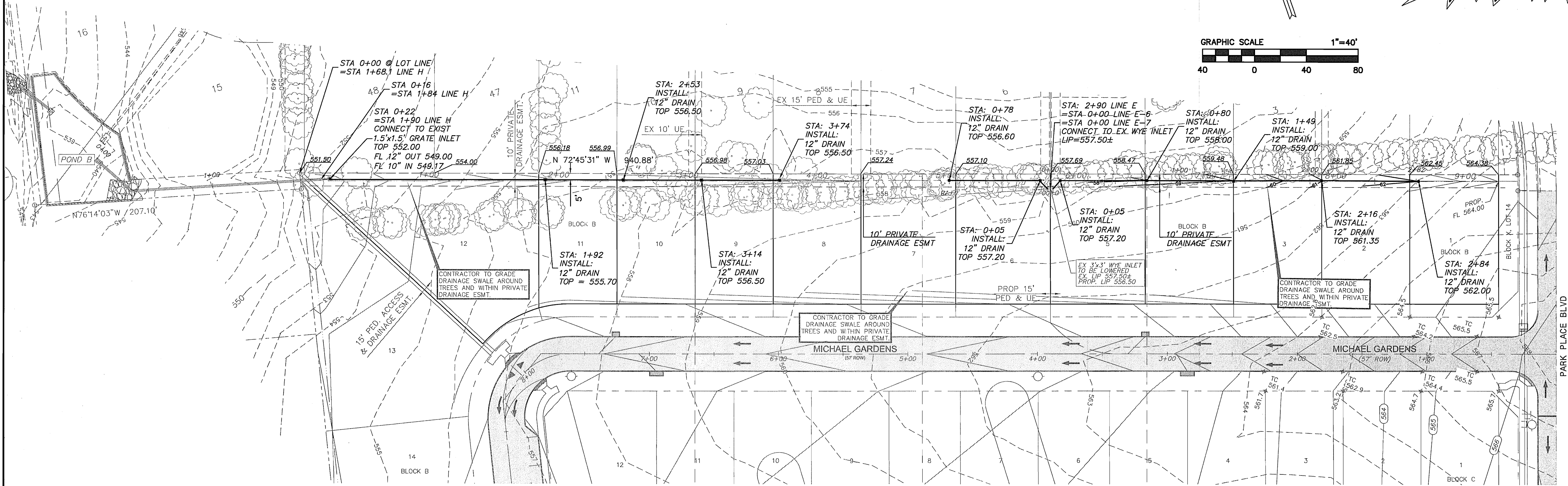
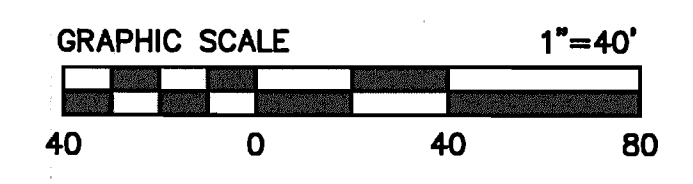
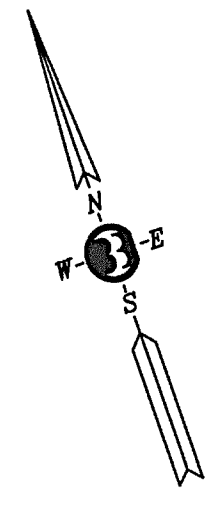


CAUTION: EXISTING UNDERGROUND UTILITIES. CONTRACTOR TO FIELD VERIFY THE LOCATION OF ALL EXISTING UTILITIES PRIOR TO EXCAVATION.



LINE H-2  
H: 1" = 40'  
V: 1" = 4'

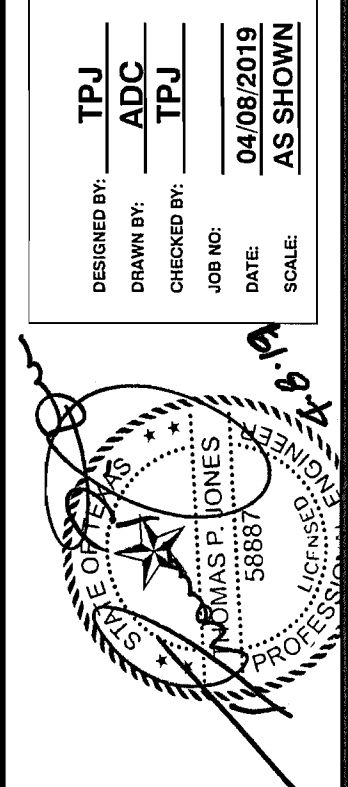
LINE E-6  
H: 1" = 40'  
V: 1" = 4'

LINE E-7  
H: 1" = 40'  
V: 1" = 4'

**CONSTRUCTION RECORDS**  
DATE: 10-23-2019 3+00 BY: [Signature]  
THIS DRAWING INDICATES THE WORK COMPLETED PER INFORMATION SUPPLIED BY THE CONTRACTOR. THE ACCURACY AND COMPLETENESS OF THIS INFORMATION HAS NOT BEEN VERIFIED. ACTUAL ON THE GROUND SURVEY VERIFICATION WAS NOT PERFORMED EXCEPT AS SPECIFICALLY NOTED. TOMDEN ENGINEERING, L.L.P. SHALL NOT BE RESPONSIBLE FOR ANY ERRORS OR OMISSIONS THAT MAY BE INCORPORATED AS A RESULT OF ERRONEOUS INFORMATION PROVIDED BY OTHERS.  
TOMDEN ENGINEERING, L.L.P.

**BENCHMARKS**  
TBM ON THE SOUTH EDGE OF PAVEMENT OF REFRID STREET APPROXIMATELY 340' SOUTH OF THE INTERSECTION ON HARTMAN. ELEVATION = 542.91'  
TBM ON THE EAST EDGE OF PAVEMENT OF REFRID STREET APPROXIMATELY 340' SOUTH OF THE INTERSECTION ON HARTMAN. ELEVATION = 535.43'

DESIGNED BY:	TPJ
DRAWN BY:	ADC
CHECKED BY:	TPJ
DATE:	04/08/2019
SCALE:	AS SHOWN
DESCRIPTION:	



**TOMDEN ENGINEERING, L.L.P.**  
5815 MEADOWCREST  
DALLAS, TX 75230  
(214) 679-1679  
FIRM No. 19244  
tjones@tomden.com

PARK PLACE WEST - PHASE III  
R. BALLARD SURVEY ABSTRACT NO. 29  
ROCKWALL, ROCKWALL COUNTY, TEXAS  
PRIVATE STORM SEWER LINE H2, E6, & E7  
Sheet No: **C22.2**  
OF 38