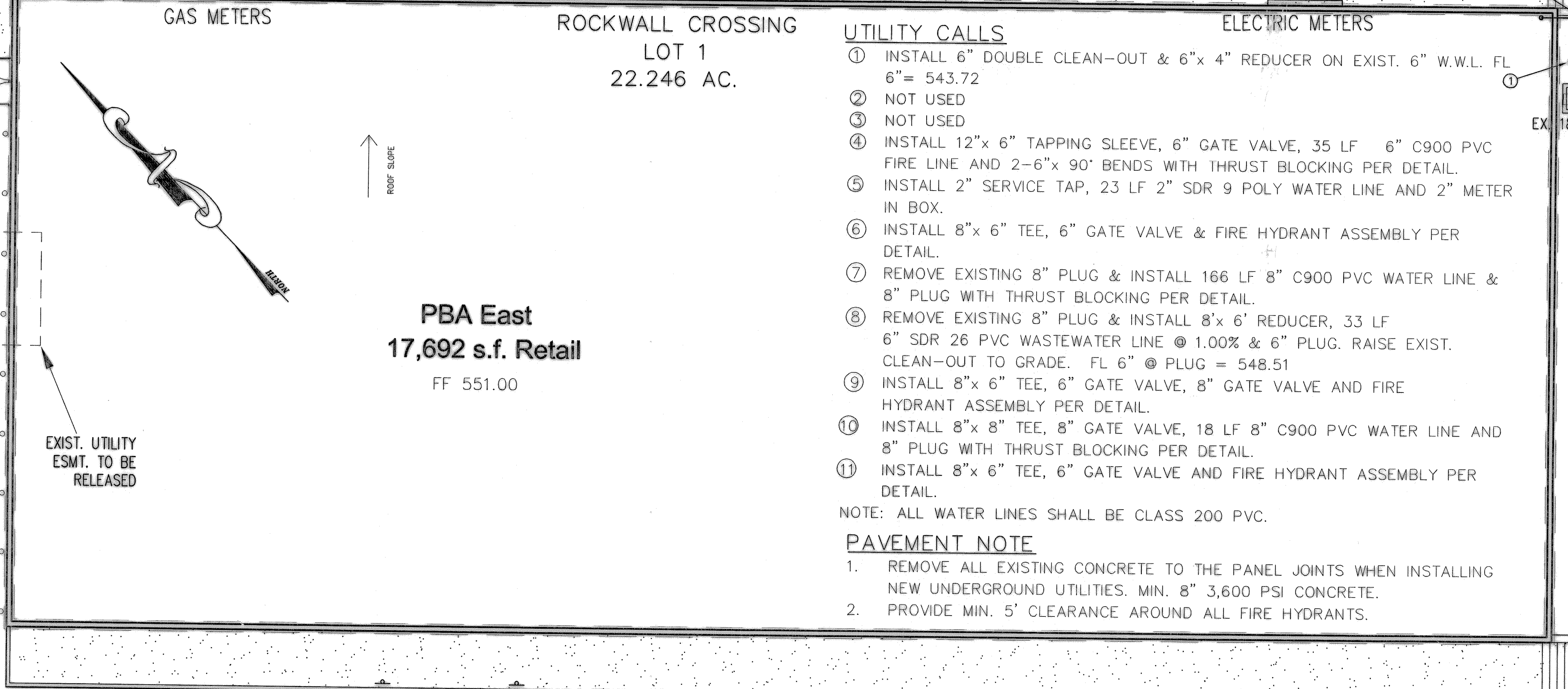


PROPERTY LINE

ROCKWALL BUSINESS PARK EAST PHASE THREE LOT 1 BLK. C

327.42'

S45°50'36"E 883.65'



ROCKWALL CROSSING
LOT 1
22.246 AC.

PBA East
17,692 s.f. Retail
FF 551.00

UTILITY CALLS

- ① INSTALL 6" DOUBLE CLEAN-OUT & 6"x 4" REDUCER ON EXIST. 6" W.W.L. FL 6" = 543.72
- ② NOT USED
- ③ NOT USED
- ④ INSTALL 12"x 6" TAPPING SLEEVE, 6" GATE VALVE, 35 LF 6" C900 PVC FIRE LINE AND 2-6"x 90" BENDS WITH THRUST BLOCKING PER DETAIL.
- ⑤ INSTALL 2" SERVICE TAP, 23 LF 2" SDR 9 POLY WATER LINE AND 2" METER IN BOX.
- ⑥ INSTALL 8"x 6" TEE, 6" GATE VALVE & FIRE HYDRANT ASSEMBLY PER DETAIL.
- ⑦ REMOVE EXISTING 8" PLUG & INSTALL 166 LF 8" C900 PVC WATER LINE & 8" PLUG WITH THRUST BLOCKING PER DETAIL.
- ⑧ REMOVE EXISTING 8" PLUG & INSTALL 8'x 6' REDUCER, 33 LF 6" SDR 26 PVC WASTEWATER LINE @ 1.00% & 6" PLUG. RAISE EXIST. CLEAN-OUT TO GRADE. FL 6" @ PLUG = 548.51
- ⑨ INSTALL 8"x 6" TEE, 6" GATE VALVE, 8" GATE VALVE AND FIRE HYDRANT ASSEMBLY PER DETAIL.
- ⑩ INSTALL 8"x 8" TEE, 8" GATE VALVE, 18 LF 8" C900 PVC WATER LINE AND 8" PLUG WITH THRUST BLOCKING PER DETAIL.
- ⑪ INSTALL 8"x 6" TEE, 6" GATE VALVE AND FIRE HYDRANT ASSEMBLY PER DETAIL.

NOTE: ALL WATER LINES SHALL BE CLASS 200 PVC.

PAVEMENT NOTE

1. REMOVE ALL EXISTING CONCRETE TO THE PANEL JOINTS WHEN INSTALLING NEW UNDERGROUND UTILITIES. MIN. 8" 3,600 PSI CONCRETE.
2. PROVIDE MIN. 5' CLEARANCE AROUND ALL FIRE HYDRANTS.

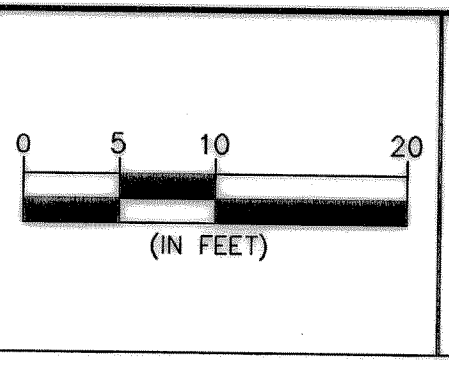
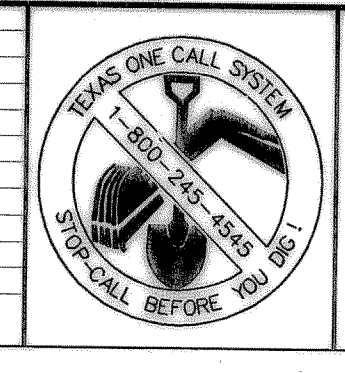
DISCLAIMER

TO THE BEST OF OUR KNOWLEDGE, THE WALLACE GROUP, INC. HEREBY STATES THAT THIS PLAN IS AS-BUILT/RECORD DRAWINGS. THE INFORMATION PROVIDED IS BASED ON SURVEYING CONDUCTED AT THE SITE AND INFORMATION PROVIDED BY THE CONTRACTOR.

24' FIRELANE, ACCESS & UTIL. ESMT. (F.F.)

LOT 2
1.42 AC.

REV	DATE	BY	DESCRIPTION



DESIGNED: DPS
DRAWN: SRM
CHECKED: DPS

THE SEAL APPEARING ON THIS DOCUMENT WAS AUTHORIZED BY MATTHEW D. MORGAN 96329 ON THE DATE SHOWN ON THE DAYSAMP. ALTERATION OF A SEALED DOCUMENT WITHOUT PROPER NOTIFICATION TO THE RESPONSIBLE ENGINEER IS AN OFFENSE UNDER THE TEXAS ENGINEERING PRACTICE ACT.

5/12/09 *Matthew D. Morgan*
DATE NAME

ENGINEERS ARCHITECTS SURVEYORS PLANNERS

THE WALLACE GROUP INC.

PBA WEST RETAIL BUILDING
ROCKWALL CROSSING
**PBA EAST
UTILITY PLAN**

SHEET 11
OF 1 SHEETS

G:\Projects\18816\WAS-BUILT_5-12-09\18816_AB_PBA-EAST-UT-GR.dwg, UTILITY PLAN EAST, 5/15/2009 3:24:48 PM, 1:1