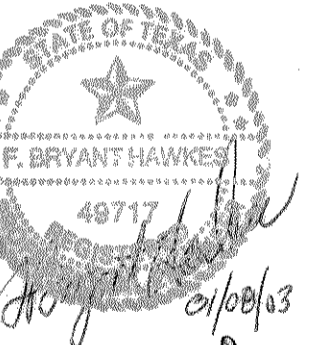
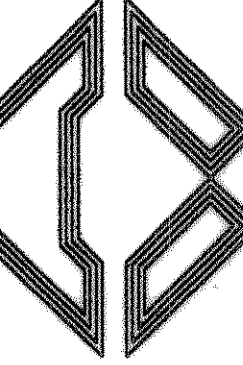


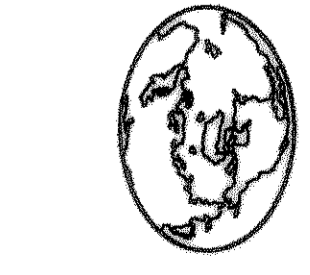


OUR SAVIOR LUTHERAN CHURCH  
Rockwall, Texas

KNOBLOCK ASSOCIATES  
ARCHITECTS WEST  
3918 WEST VICKERY BOULEVARD FORT WORTH, TEXAS 817571-0030



Hawkes & Associates, Inc.  
Consulting Engineers  
1448 Webb Chapel Rd. Suite 112 Farmers Branch, TX 75234-3600  
PHONE (972) 241-6064 FAX (972) 241-1095



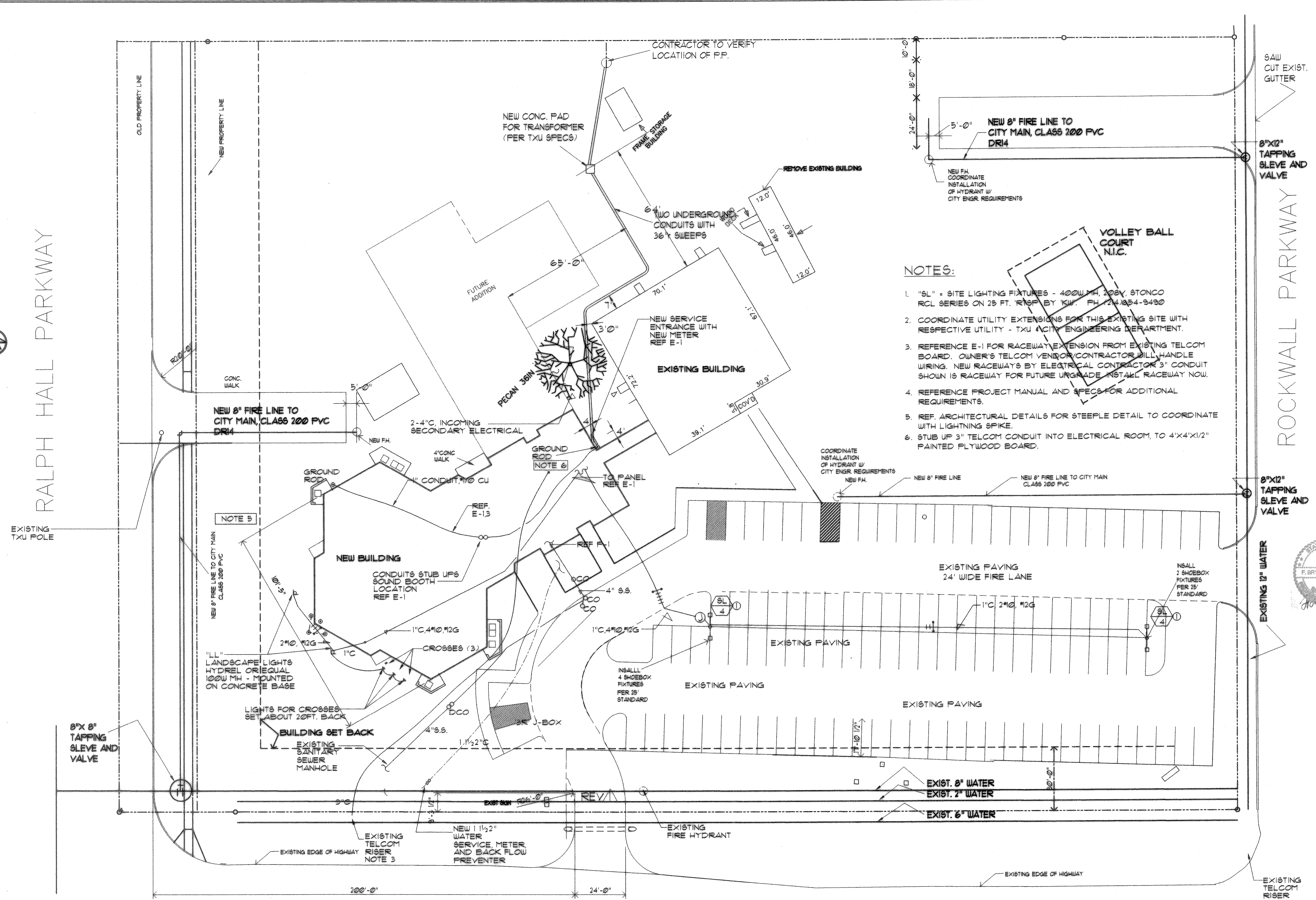
BID SET

3003 HORIZON RD. - F.M. 3097

MEP SITE PLAN  
SCALE: 1" = 20'-0"

NOTES:

- "SL" = SITE LIGHTING FIXTURES - 400W MH, 208V, STONCO RCL SERIES ON 25 FT. RISE BY "KW". PH. 241-054-9490
- COORDINATE UTILITY EXTENSIONS FOR THIS EXISTING SITE WITH RESPECTIVE UTILITY - TXU ACITY ENGINEERING DEPARTMENT.
- REFERENCE E-1 FOR RACEWAY EXTENSION FROM EXISTING TELCOM BOARD. OWNER'S TELCOM VENDOR/CONTRACTOR WILL HANDLE WIRING. NEW RACEWAYS BY ELECTRICAL CONTRACTOR 3" CONDUIT SHOWN IS RACEWAY FOR FUTURE UPGRADE. INSTALL RACEWAY NOW.
- REFERENCE PROJECT MANUAL AND SPECS FOR ADDITIONAL REQUIREMENTS.
- REF. ARCHITECTURAL DETAILS FOR STEEPLE DETAIL TO COORDINATE WITH LIGHTNING SPIKE.
- STUB UP 3" TELCOM CONDUIT INTO ELECTRICAL ROOM, TO 4'X4'X1/2" PAINTED PLYWOOD BOARD.



RALPH HALL PARKWAY

ROCKWALL PARKWAY

VOLLEY BALL COURT N.I.C.

CONTRACTOR TO VERIFY LOCATION OF P.P.

NEW CONC. PAD FOR TRANSFORMER (PER TXU SPECS)

FRAME STORAGE BUILDING

REMOVE EXISTING BUILDING

EXISTING BUILDING

NEW SERVICE ENTRANCE WITH NEW METER REF E-1

NEW 8" FIRE LINE TO CITY MAIN, CLASS 200 PVC DRI4

2-4" C, INCOMING SECONDARY ELECTRICAL

GROUND ROD NOTE 6

TO PANEL REF E-1

COORDINATE INSTALLATION OF HYDRANT W/ CITY ENGR. REQUIREMENTS

NEW 8" FIRE LINE

NEW 8" FIRE LINE TO CITY MAIN CLASS 200 PVC

8"X12" TAPPING SLEVE AND VALVE

NOTE 5

NEW BUILDING

CONDUITS STUB UPS SOUND BOOTH LOCATION REF E-1

EXISTING PAVING 24' WIDE FIRE LANE

EXISTING PAVING

EXISTING PAVING

EXISTING PAVING

8"X8" TAPPING SLEVE AND VALVE

BUILDING SET BACK

EXISTING SANITARY SEWER MANHOLE

4" S.S.

DCO

2" J-BOX

EXIST. 8" WATER

EXIST. 2" WATER

EXIST. 8" WATER

EXIST. 2" WATER

EXIST. 6" WATER

EXISTING TELCOM RISER NOTE 3

NEW 1 1/2" WATER SERVICE METER AND BACK FLOW PREVENTER

EXISTING FIRE HYDRANT

EXISTING EDGE OF HIGHWAY

EXISTING TELCOM RISER

OLD PROPERTY LINE

NEW PROPERTY LINE

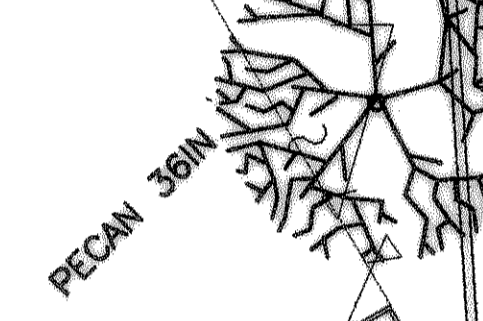
CONC. WALK

GROUND ROD

4" CONC WALK

1" CONDUIT, 1/2" CU

FUTURE ADDITION



GROUND ROD NOTE 6

TO PANEL REF E-1

4"

4"

30.9'

30.9'

39.1'

70.1'

70.1'

65'-0"

12.0'

12.0'

12.0'

12.0'

12.0'

12.0'

12.0'

12.0'

12.0'

12.0'

12.0'

200'-0"

24'-0"

24'-0"

24'-0"

24'-0"

24'-0"

24'-0"

24'-0"

24'-0"

24'-0"

24'-0"

24'-0"

24'-0"

24'-0"

24'-0"

24'-0"

24'-0"

24'-0"

24'-0"

24'-0"

24'-0"

24'-0"

24'-0"

24'-0"

24'-0"

24'-0"

24'-0"

24'-0"

24'-0"

24'-0"