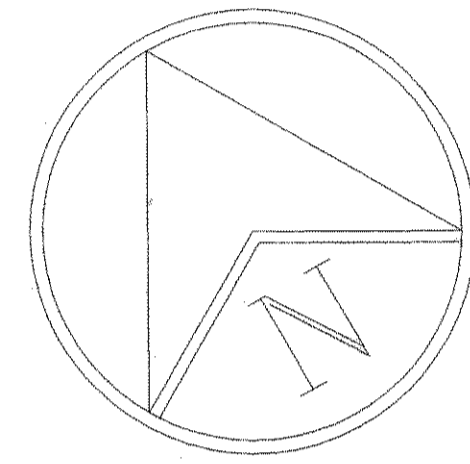


# SITE GRADING PLAN

SCALE:  
1" = 20'-0"



RALPH HALL PARKWAY  
(55.0' R.O.W.)

ROCKWALL PARKWAY

EXISTING CONTOURS

NEW CONTOURS

### CULVERT HYDRAULIC CALCULATIONS

$Q_{100} = CIA$   
 $Q_{100} = 0.050 (9.6 \times 10)$   
 $= 4.8 \text{ CFS}$

ACRES = 10  
TOTAL ACRES = 10  
RUNOFF COEF. C = 0.500  
 $C \times A = 0.50$   
TOTAL CA = 0.50  
TIME  $T_c = 15.00$  min  
FREQUENCY = 100 YEAR  
INTENSITY = 9.6 IN/HR  
DESIGN FLOW = 4.80 cfs  
NUMBER OF BARRELS = 1  
PIPE DIAMETER = 24"  
CAPACITY = 16 cfs  
SLOPE = 0.40%

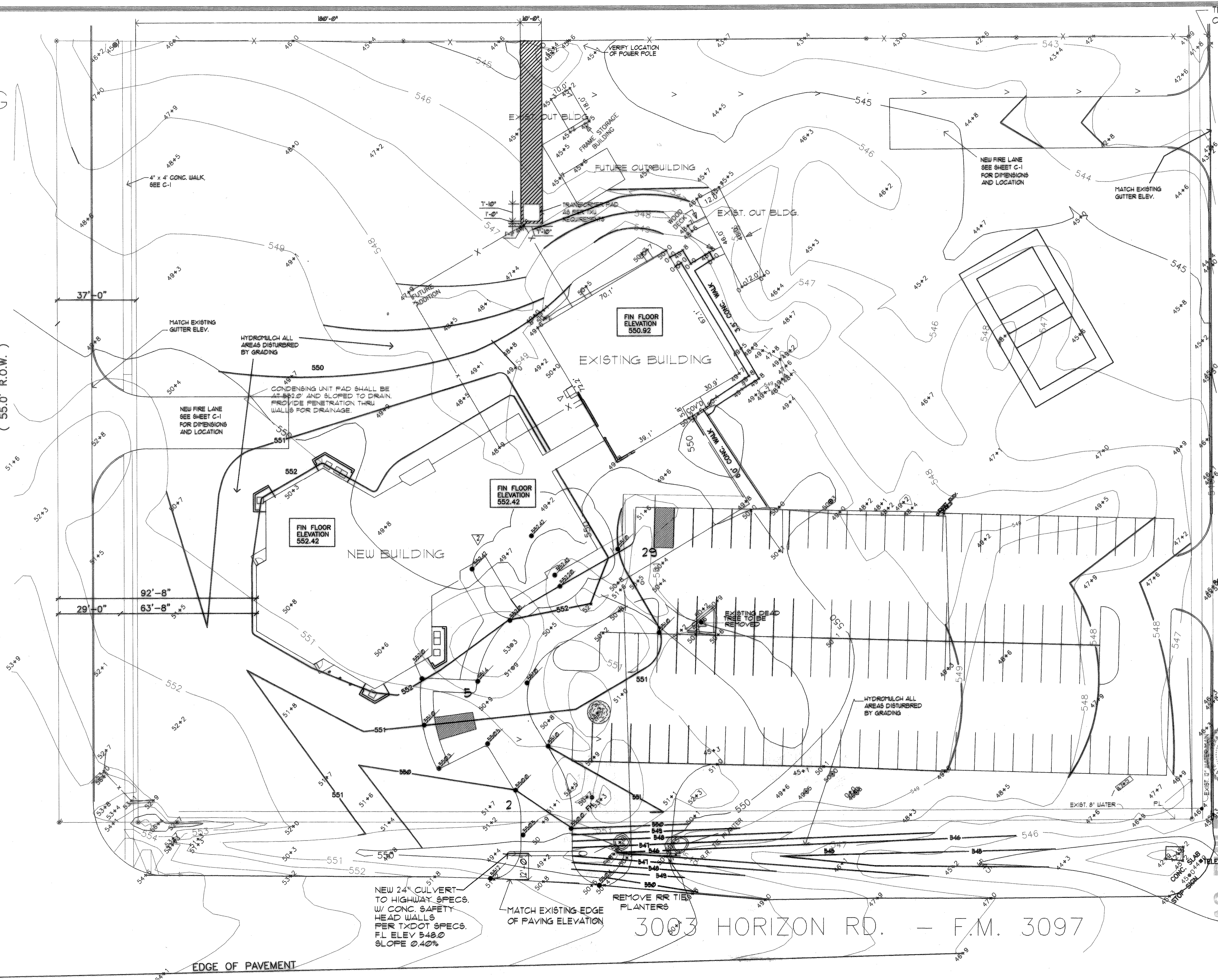
NEW 24" CULVERT TO HIGHWAY SPECS. W/ CONC. SAFETY HEAD WALLS PER TXDOT SPECS. FL ELEV 548.0 SLOPE 0.40%

MATCH EXISTING EDGE OF PAVING ELEVATION

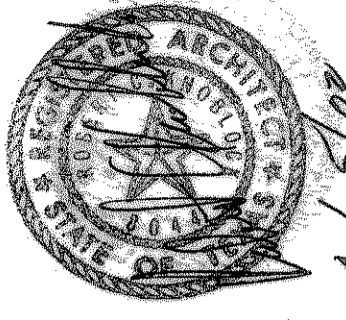
REMOVE RR TIE PLANTERS

3003 HORIZON RD. - F.M. 3097

EDGE OF PAVEMENT

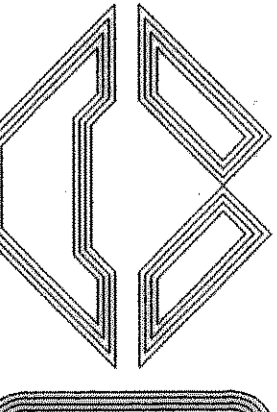
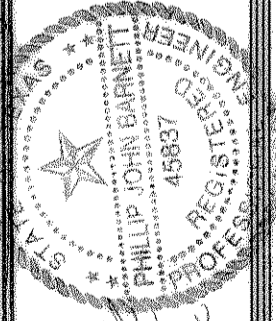


PROJECT NUMBER  
2180 95  
ISSUED  
10/3/00  
REVISED  
3/1/01  
4/5/02



OUR SAVIOR LUTHERAN CHURCH  
Rockwall, Texas

KNOBLOCK ASSOCIATES  
ARCHITECTS WEST  
3919 WEST VICKERY BOULEVARD FORT WORTH, TEXAS 817311-0050



SHEET NO.  
C-2  
OF 3