

STATE
HIGHWAY
NO. 206

Remove Ex. Hdwl.
Const. New Hdwl.
24' From E.R.O.W.
Const. 20 L.F.
36" R.C.P.

POP
Asph. Transition

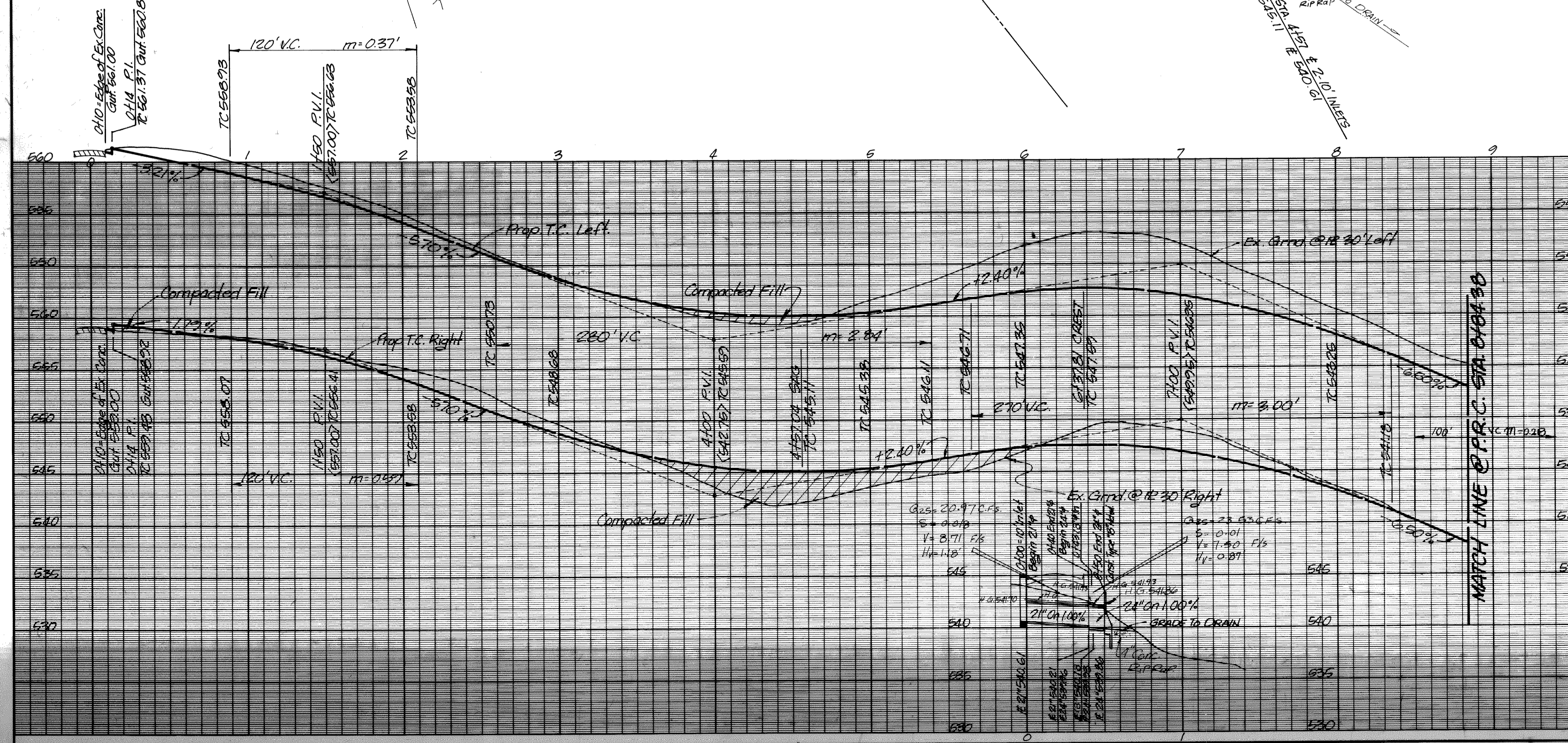
See Detail Sheet
No. D-1 for Const.
Details

MATCH LINE @ P.R.C. STA. 8184.38
(SEE SHEET 4 OF 6)

Curve Data
 $\Delta = 44^{\circ}10'44''$
 $R = 300.00'$
 $T = 121.75'$
 $L = 231.32'$

RAYMOND & ELIZABETH CAMERON

NOTE: Shaded Areas Are Those To Be
Constructed Under This Contract.



AS BUILT

3
6

HAROLD L. EVANS
CONSULTING ENGINEER
2331 GUS THOMASSON RD. SUITE 102
DALLAS, TEXAS 75228
PHONE (214) 328-8133

PAVING PLAN
Our Lady of the Lake Catholic Church
CITY OF ROCKWALL
ROCKWALL COUNTY, TEXAS

SCALE DATE JOB NO.
1"=40'H. 1/8"=1' 11-2-84 83276

REVISED: Grades Sta. 8180 to 10115-1-4-85, Const. 20' Wide Pavt. Remove 130 L.F. @ End 1-25-85