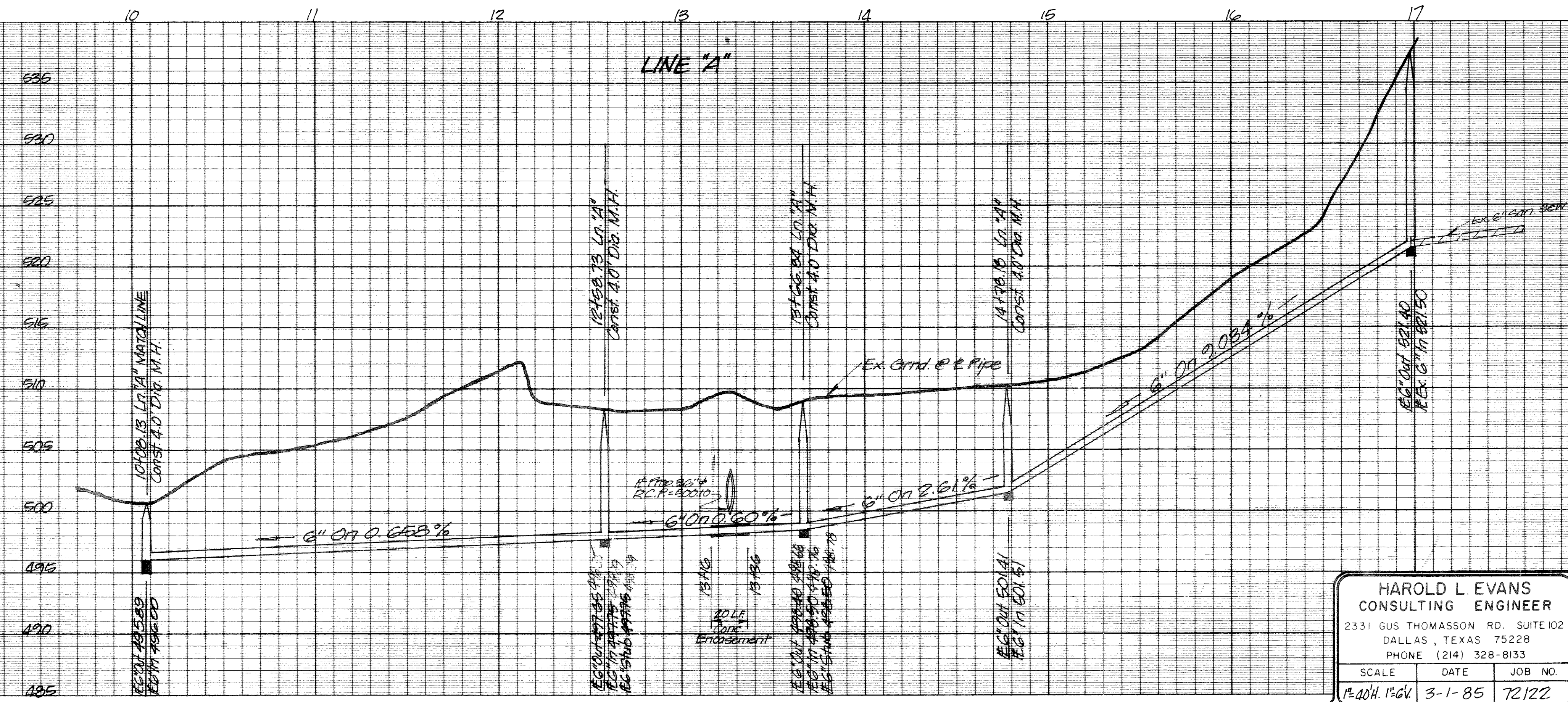
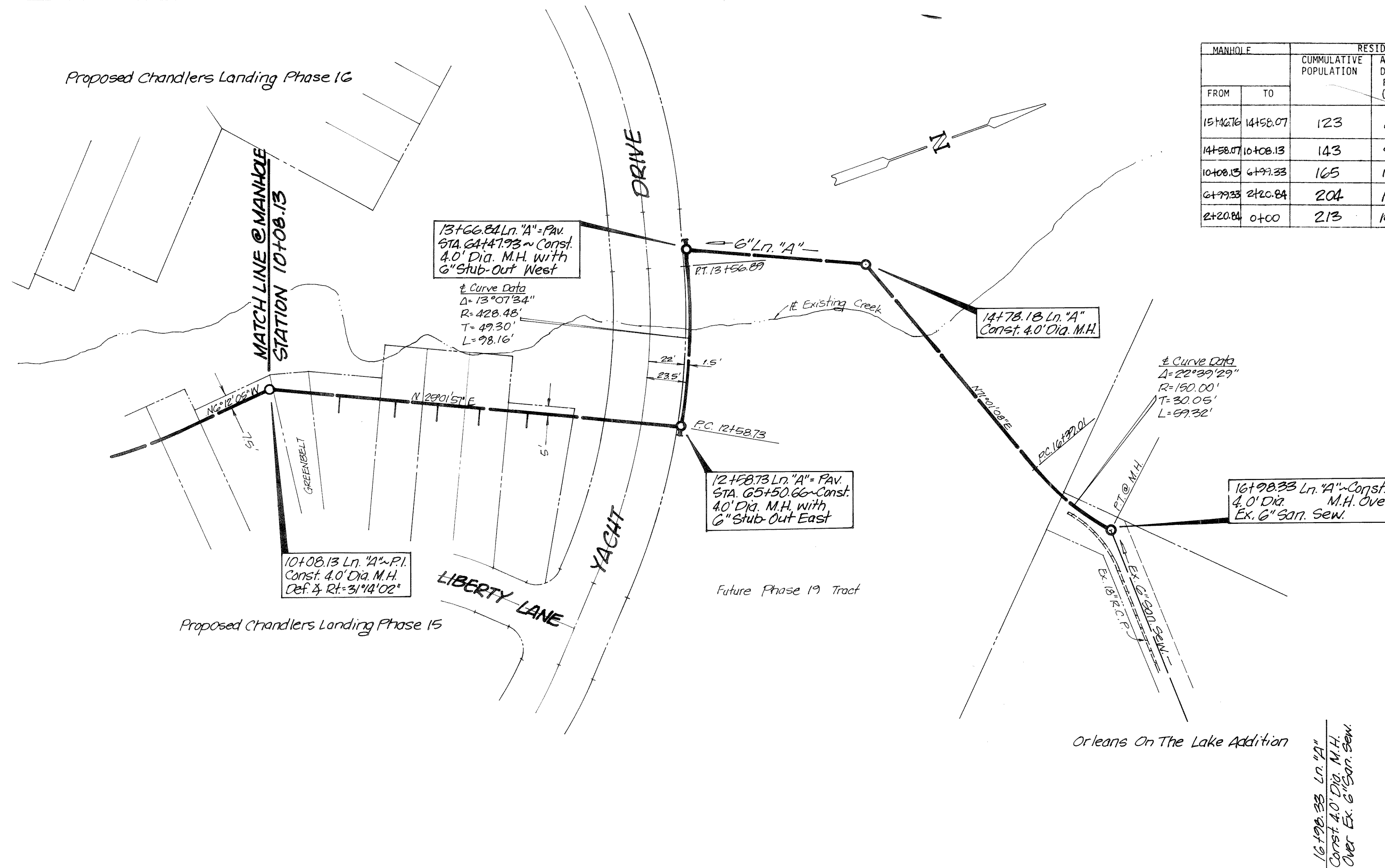


SANITARY SEWER SYSTEM SUMMARY

MANHOLE	FROM	TO	RESIDENTIAL FLOW		Commercial or Industrial Point Source Flow		Peak Infiltration/Inflow (gpm)	Total Design Flow Maximum Wet-Weather Day (gpm)	
			CUMMULATIVE POPULATION	AVERAGE DRY-DAY FLOW (gpm)	MAXIMUM DRY-DAY FLOW (gpm)	Units*			Average Flow (gpm)
15+42.16	14+58.07	1458.07	123	8.54	21.35	—	—	0.01	21.38
14+58.07	10+08.13	1408.13	143	9.93	24.83	—	—	0.05	24.88
10+08.13	6+99.33	1008.13	165	11.46	28.65	—	—	0.04	28.69
6+99.33	2+20.84	600.00	204	14.17	35.43	—	—	0.06	35.49
2+20.84	0+00	0+00	213	14.79	36.98	—	—	0.03	37.01



AS BUILT

REVISED: 7-28-85
8-8-85

HAROLD L. EVANS
CONSULTING ENGINEER
2331 GUS THOMASSON RD. SUITE 102
DALLAS, TEXAS 75228
PHONE (214) 328-8133

SCALE DATE JOB NO.
1"=40'H 1"=6'V 3-1-85 72122

SANITARY SEWER PLAN & PROFILE
ORLEANS ON THE LAKE OUTFALL SEWER
ACROSS CHANDLERS LANDING
ROCKWALL, ROCKWALL COUNTY, TEXAS