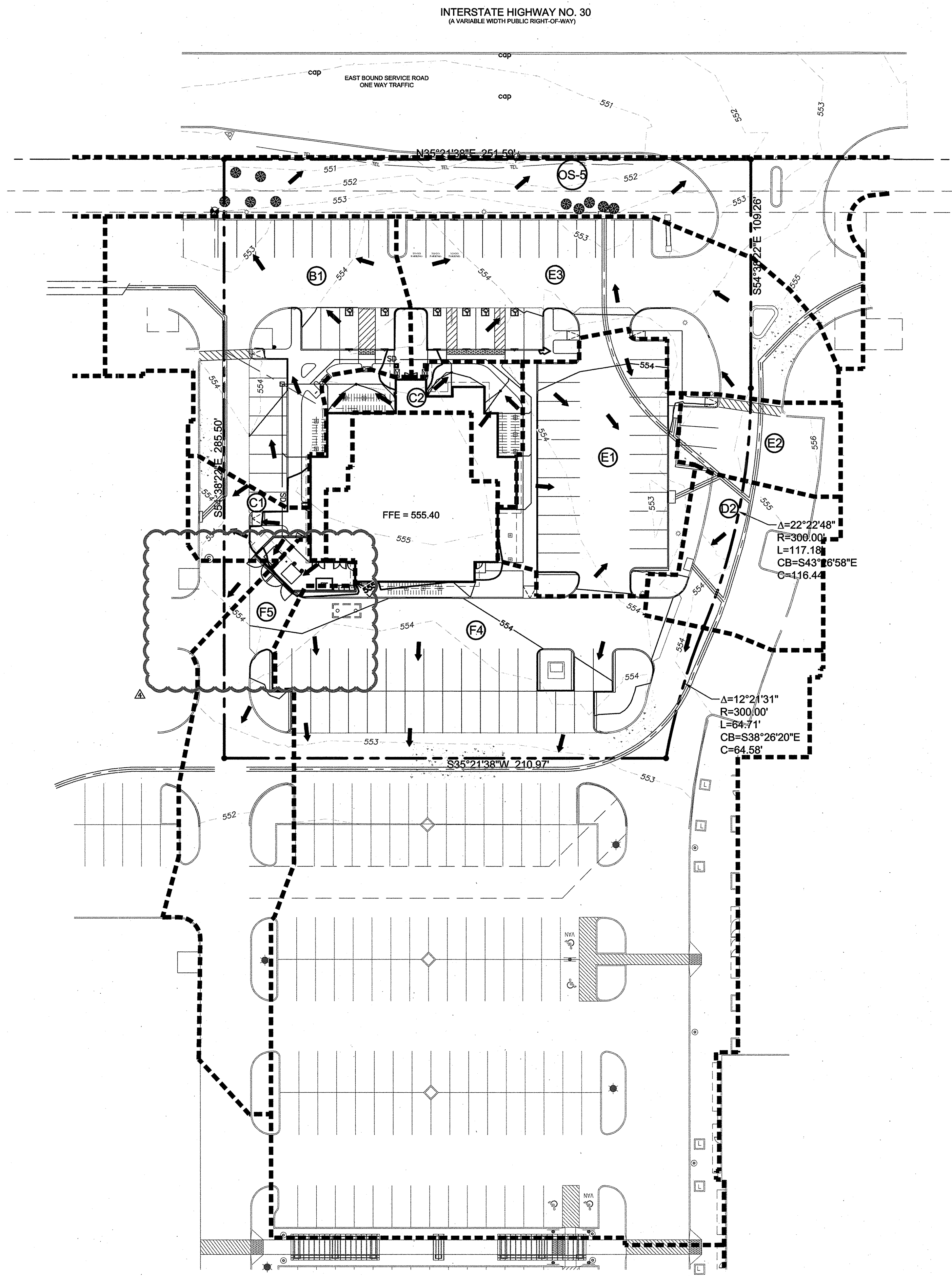
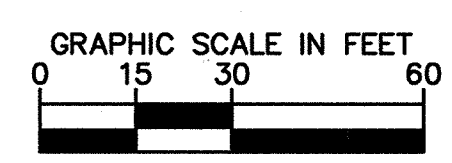
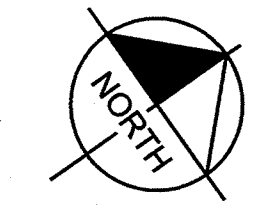


Drawing name: K:\S\A\04\387045\04\PropSheet\OC-DMP.dwg Layout: Mar 29, 2012, 3:06pm by jmk@kwh.com  
 THIS DOCUMENT, TOGETHER WITH THE CONCEPTS AND DESIGNS PRESENTED HEREIN, IS AN INSTRUMENT OF SERVICE. IT IS INTENDED ONLY FOR THE SPECIFIC PURPOSE AND CLIENT FOR WHICH IT WAS PREPARED. REUSE OF AND IMPROPER RELIANCE ON THIS DOCUMENT WITHOUT WRITTEN AUTHORIZATION AND ADAPTATION BY KIMLEY-HORN AND ASSOCIATES, INC. SHALL BE WITHOUT LIABILITY TO KIMLEY-HORN AND ASSOCIATES, INC.

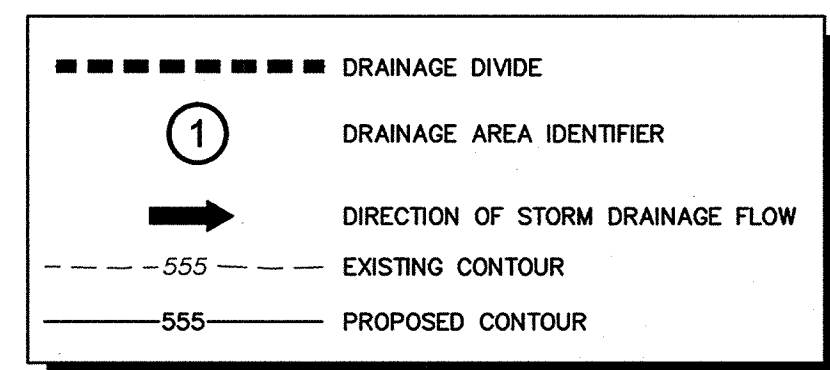


INTERSTATE HIGHWAY NO. 30  
(A VARIABLE WIDTH PUBLIC RIGHT-OF-WAY)



**"RECORD DRAWING"**  
 THIS DRAWING HAS BEEN REVISED TO SHOW THOSE CHANGES DURING THE CONSTRUCTION PROCESS VISUALLY VERIFIED BY A REPRESENTATIVE FROM OUR OFFICE AND REPORTED BY THE CONTRACTOR TO KIMLEY-HORN AND ASSOCIATES, INC. AND CONSIDERED TO BE SIGNIFICANT. THIS DRAWING IS NOT GUARANTEED TO BE "AS-BUILT" BUT IS BASED ON THE INFORMATION MADE AVAILABLE.

**LEGEND**



**NOTES:**  
 1. DRAINAGE AREAS BASED ON APPROVED DRAINAGE AREA MAP FOR THE ROCKWALL PLAZA PHASE II, BY BURY & PARTNERS, DATED SEPTEMBER 29, 2011

**DRAINAGE CALCULATIONS**

BY RATIONAL METHOD:  
 $Q = C \cdot I \cdot A$   
 $C = 0.90$  (CONCRETE)  
 $T_c = 10$  MINUTES  
 $I_{100} = 9.80$  IN/HR

**GRATE INLET CALCULATIONS**

$Q = CA(2gh)^{3/2}$   
 $C = 0.67$   
 $h = 0.50$  FT.  
 \*assume clogging factor of 50%  
 8" ROUND DOME INLET  
 OPEN AREA: 30 SQ. IN.  
 $Q = 0.40$  cfs

**CURB INLET CALCULATIONS**

$Q = 3.0 \cdot L \cdot h^{3/2}$   
 $h = 0.50$  FT.  
 5' CURB INLET:  
 $L = 5$  FT.  
 $Q = 5.30$  cfs  
 10' CURB INLET:  
 $L = 10$  FT.  
 $Q = 10.60$  cfs

**PROPOSED DRAINAGE CALCULATIONS**

DRAINAGE AREA	AREA (ACRES)	Tc (MIN)	FLOW COEFF. (CFS/ACRE-IN)	100-YR INTENSITY (IN/HR)	100-YR PEAK FLOW (CFS)	COLLECTION POINT
B1	0.32	10	0.90	9.80	2.82	EXISTING CURB INLET
C1	0.05	10	0.90	9.80	0.44	EXISTING CURB INLET
C2	0.09	10	0.90	9.80	0.79	DOWNSPOUTS / LANDSCAPE INLETS TO EXISTING STORM STUB
D2	0.13	10	0.90	9.80	1.15	EXISTING CURB INLET
E1	0.21	10	0.90	9.80	1.85	EXISTING CURB INLET
E2	0.07	10	0.90	9.80	0.62	EXISTING CURB INLET
E3	0.30	10	0.90	9.80	2.65	EXISTING CURB INLET
F4	1.70	10	0.90	9.80	14.99	SHEET FLOW TO EXIST. INLET SOUTH
F5	0.25	10	0.90	9.80	2.21	SHEET FLOW TO EXIST. INLET SOUTH
OS-5	0.53	10	0.90	9.80	4.67	SHEET FLOW TO I-30 R.O.W.

**BENCHMARKS**

VERTICAL DATUM - NAVD 88  
 City of Rockwall monument No. 50 (reset R005-1) - a concrete monument with brass cap found in the center median of Summit Ridge Drive at its intersection with F.M. HWY No. 740  
 Elevation=578.63'  
 City of Rockwall monument No. 51 (reset #1) - a concrete monument with brass cap found near the northwest corner of a parking lot adjacent to the southwest corner of the intersection of Summer Lee and F.M. 740.  
 Elevation=567.70'  
 BM-1  
 "X" set on the west corner of a concrete curb inlet located on the northwest side of a parking lot approximately 60 feet southeast from the center of the east bound service road of IH 30 and 270 feet southwest from the center of the northernmost entrance to Plaza of Rockwall.  
 Elevation=552.98'

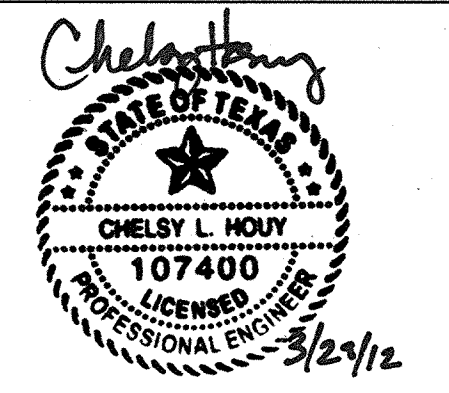
NOTE: ALL RESPONSIBILITY FOR ADEQUACY OF DESIGN REMAINS WITH THE DESIGN ENGINEER. THE CITY OF ROCKWALL, IN REVIEWING AND RELEASING PLANS FOR CONSTRUCTION, ASSUMES NOT RESPONSIBILITY FOR ADEQUACY OR ACCURACY OF DESIGN.

**C · R · H · O**  
 Architecture Interior Planning  
 195 South "C" Street 200  
 Justin, California 92780  
 714 832-1834  
 FAX 832-1910

ARCHITECTS PROJECT #:  
11194

**Kimley-Horn and Associates, Inc.**  
 601 NW LOOP 410, SUITE 350  
 SAN ANTONIO, TEXAS 78216  
 PHONE: 210-541-9186  
 FAX: 210-541-8699  
 WWW.KIMLEY-HORN.COM  
 TBPE Firm No. 928

© 2011 KIMLEY-HORN AND ASSOCIATES, INC.  
 KHA PROJECT # 063887045



Issue Date: 07/18/11

**REVISION INFORMATION**

NO.	REVISION	DATE
1	GENERAL REVISIONS	07/21/11
2	CITY COMMENTS	09/07/11
3	AGENCY REVISIONS	10/06/11
4	AGENCY REVISIONS	10/19/11
5		
6		
7		

Restaurant #: 11L0042

**OLIVE GARDEN**  
 PROTOTYPE OG-P-75R  
 ROCKWALL BUSINESS  
 PARK EAST SUBDIVISION  
 1043 EAST IH-30

AUTHORIZED FOR: PERMIT/BID  
 ROCKWALL, TEXAS

DRAWING  
 DRAINAGE AREA MAP