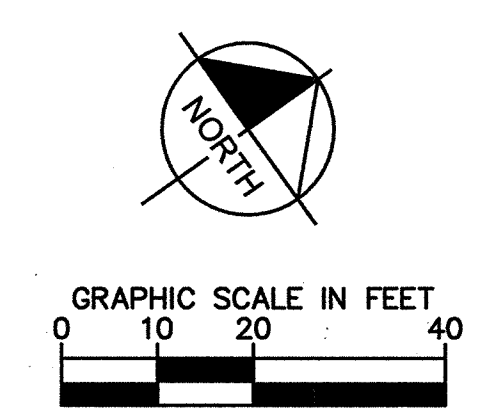


INTERSTATE HIGHWAY NO. 30
(A VARIABLE WIDTH PUBLIC RIGHT-OF-WAY)

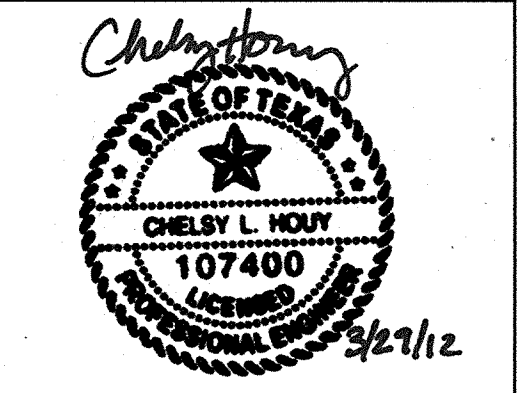


"RECORD DRAWING"
THIS DRAWING HAS BEEN REVISED TO SHOW THOSE CHANGES DURING THE CONSTRUCTION PROCESS VISUALLY VERIFIED BY A REPRESENTATIVE FROM OUR OFFICE AND REPORTED BY THE CONTRACTOR TO KIMLEY-HORN AND ASSOCIATES, INC. AND CONSIDERED TO BE SIGNIFICANT. THIS DRAWING IS NOT GUARANTEED TO BE "AS-BUILT" BUT IS BASED ON THE INFORMATION MADE AVAILABLE.

C · R · H · O
Architecture Interior Planning
195 South "C" Street 200
Justin, California 92780
714 832-1834
FAX 832-1910

ARCHITECTS PROJECT #:
11194

Kimley-Horn and Associates, Inc.
601 NW LOOP 410, SUITE 350
SAN ANTONIO, TEXAS 78216
PHONE: 210-541-9188
FAX: 210-541-8699
WWW.KIMLEY-HORN.COM
TBPPE Firm No. 928
© 2011 KIMLEY-HORN AND ASSOCIATES, INC.
KHA PROJECT # 063887045



Issue Date: 07/18/11

REVISION INFORMATION	
1	07/21/11
GENERAL REVISIONS	
2	09/07/11
CITY COMMENTS	
3	
4	
5	
6	
7	

Restaurant #: 11L0042

OLIVE GARDEN
PROTOTYPE OG-P-75R
ROCKWALL BUSINESS
PARK EAST SUBDIVISION
1043 EAST IH-30

AUTHORIZED FOR: PERMIT/BID
ROCKWALL, TEXAS

DRAWING
PAVING PLAN

C3.2

LEGEND

- 1 PROPOSED 6" CONCRETE CURB (SEE DETAIL THIS SHEET)
- 2 4" WHITE PAINTED STRIPE
- 3 4" PAINTED STRIPING, 12" O.C. @ 45°
- 4 ACCESSIBLE PARKING (REF. ARCH. PLANS FOR DETAIL)
- 5 CONSTRUCT BARRIER FREE RAMP (SEE DETAIL, SHEET C6.1)
- 6 CONSTRUCT CONCRETE SIDEWALK (SEE DETAIL, SHEET C6.1)
- 7 FIRE LANE MARKING (SEE DETAIL, SHEET C6.1)
- 8 TRUNCATED DOMES (36" DEEP)
- 9 12" WALK-OFF CURB (SEE DETAIL, THIS SHEET)
- 10 SIDEWALK FLUSH WITH PAVEMENT
- 11 TRANSITIONAL CURB (SEE GRADING PLAN C4.1)
- 12 REFERENCE ARCH. PLANS FOR SIGNS AND MARKINGS

--- PROPOSED PVC CONDUIT LOCATION (SEE GENERAL NOTE 3, THIS SHEET)

— FL — PROPOSED FIRELANE MARKING

CONCRETE PAVEMENT (TRASH ENCLOSURE)

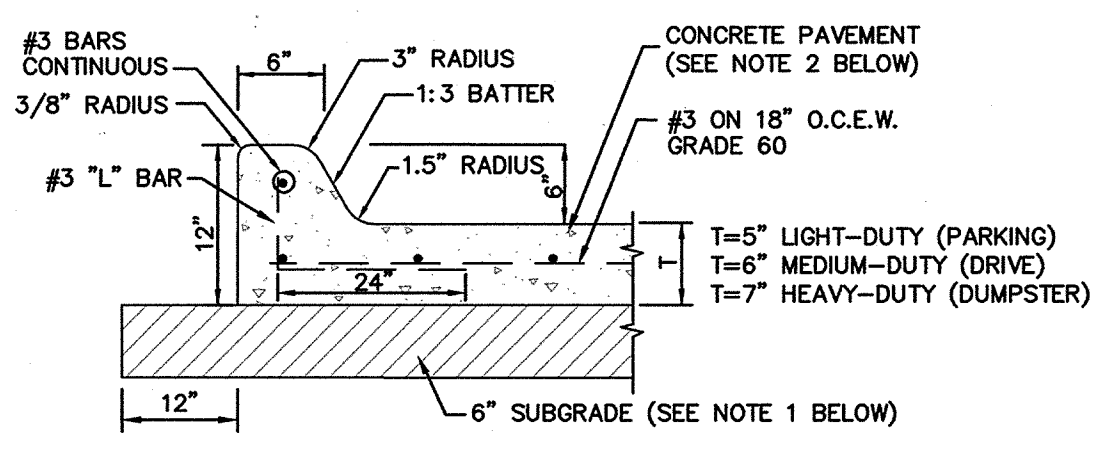
MEDIUM-DUTY CONCRETE PAVEMENT (DRIVE)

CONCRETE PAVEMENT (PARKING)

PROPOSED SIDEWALK

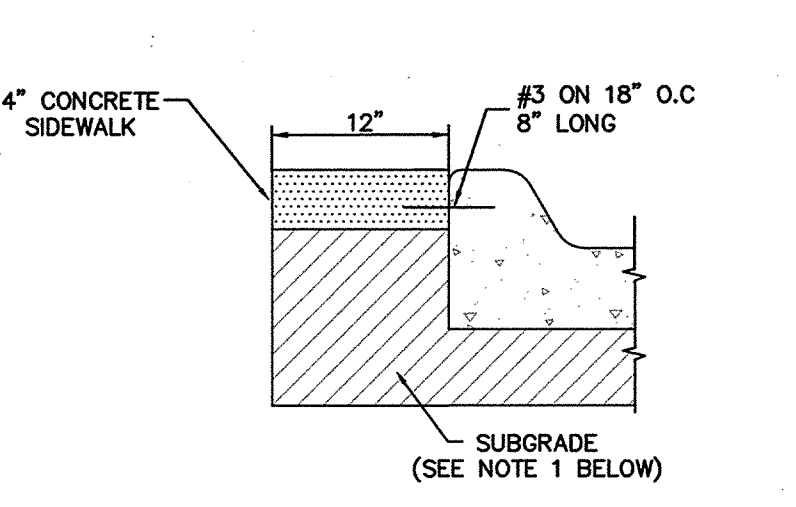
- GENERAL NOTES**
- REFERENCE GEOTECHNICAL REPORT FOR ADDITIONAL PAVING AND SOIL PREPARATION NOTES.
 - REFERENCE GEOTECHNICAL REPORT FOR PAVEMENT SAWCUT AND EXPANSION JOINT RECOMMENDATIONS.
 - REFERENCE IRRIGATION AND MEP PLANS FOR CONDUIT SIZES AND LOCATIONS.
 - REFERENCE GRADING PLAN FOR AREAS WITH LESS THAN 6" CURB.
 - EXISTING PARKING AND FIRELANES ON THE OLIVE GARDEN LOT TO BE RESTRIPE BY CONTRACTOR PER THIS PLAN.

TAS NOTE:
GROUND AND FLOOR SURFACES ALONG ACCESSIBLE ROUTES AND IN ACCESSIBLE ROOMS AND SPACES INCLUDING FLOORS, WALKS, RAMPS, STAIRS, AND CURB RAMPS, SHALL BE STABLE, FIRM, SLIP-RESISTANT, AND SHALL COMPLY WITH SECTION 4.5.5 OF THE TEXAS ACCESSIBILITY STANDARDS.



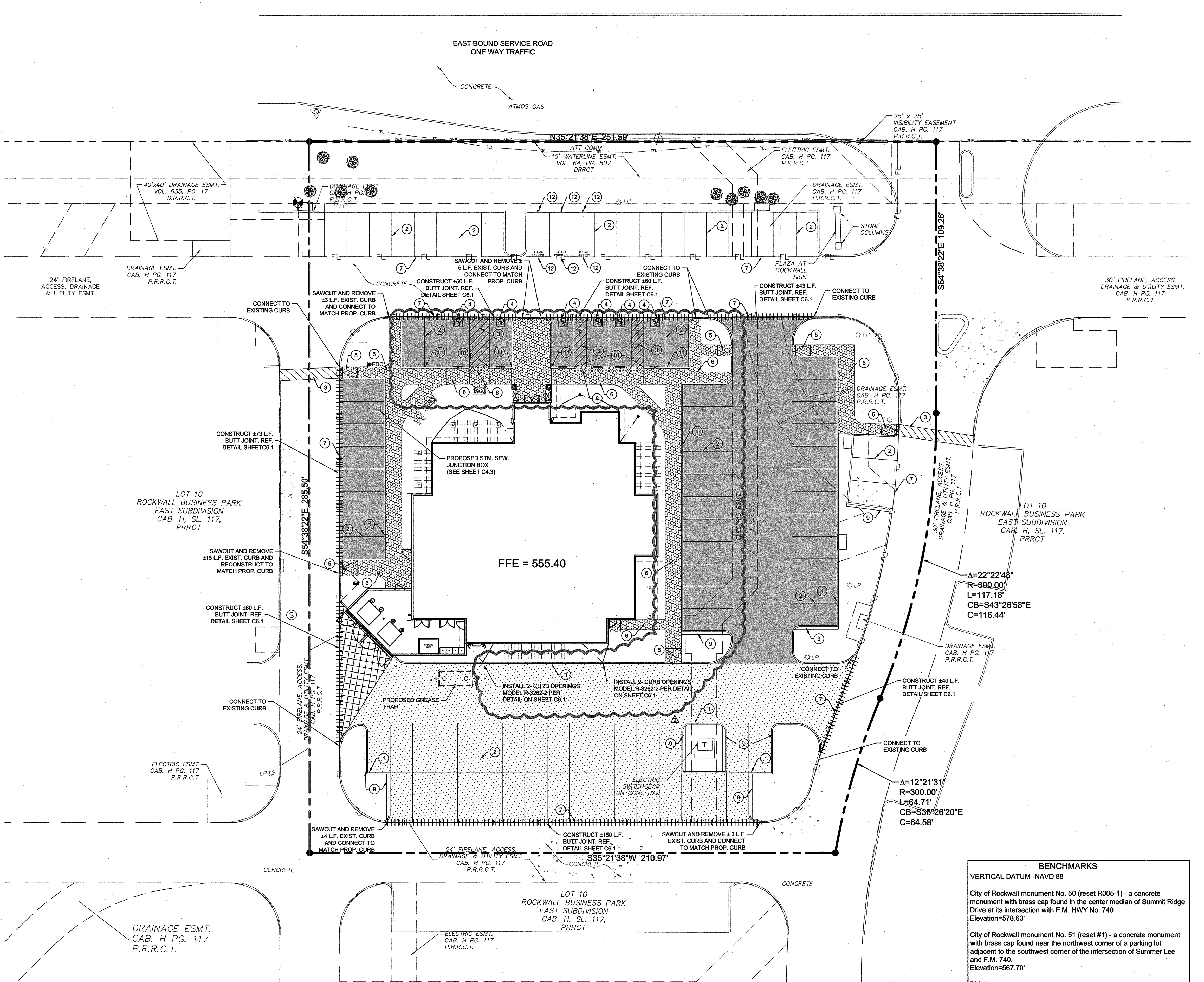
NOTE: REFERENCE GEOTECHNICAL REPORT BY TOLLINAY-WONG ENGINEERS, INC. PROJECT NO. 10.63.011, DATED AUGUST 2010 FOR ADDITIONAL INFORMATION.

CONCRETE CURB & PAVEMENT SECTION
N.T.S.



WALK OFF CURB DETAIL
N.T.S.

- PAVEMENT SECTION NOTES**
- SUBGRADE PREPARATION WILL VARY DEPENDING ON SITE CONDITIONS AT TIME OF CONSTRUCTION. GROUNDWATER PRESENT IN ONE BORING AT TIME OF REPORT. CONTRACTOR TO REFER TO SITE PREPARATION SECTION 6.1 AND THE PAVEMENT DESIGN RECOMMENDATIONS SECTION 6.5 OF THE GEOTECHNICAL REPORT FOR FURTHER INFORMATION. LIME STABILIZATION OF SUBGRADE SHALL BE PERFORMED IN ACCORDANCE WITH SECTION 6.1.3 OF THE REPORT. NO SAND ALLOWED UNDER PAVING.
 - CONCRETE USED FOR PAVING SHOULD HAVE A MINIMUM COMPRESSIVE STRENGTH OF 3,600 PSI AT 28 DAYS. HAND PLACE MIN OF 6.5 SACK MIX. MACHINE PLACE MIN OF 6.0 SACK MIX.



BENCHMARKS
VERTICAL DATUM - NAVD 88
City of Rockwall monument No. 50 (reset R005-1) - a concrete monument with brass cap found in the center median of Summit Ridge Drive at its intersection with F.M. HWY No. 740
Elevation=578.83'
City of Rockwall monument No. 51 (reset #1) - a concrete monument with brass cap found near the northwest corner of a parking lot adjacent to the southwest corner of the intersection of Summer Lee and F.M. 740.
Elevation=567.70'
BM-1
"X" set on the west corner of a concrete curb inlet located on the northwest side of a parking lot approximately 60 feet southeast from the center of the east bound service road of IH 30 and 270 feet southwest from the center of the northernmost entrance to Plaza of Rockwall.
Elevation=552.98'

NOTE: ALL RESPONSIBILITY FOR ADEQUACY OF DESIGN REMAINS WITH THE DESIGN ENGINEER. THE CITY OF ROCKWALL, IN REVIEWING AND RELEASING PLANS FOR CONSTRUCTION, ASSUMES NOT RESPONSIBILITY FOR ADEQUACY OR ACCURACY OF DESIGN.

Drawing name: K:\SUN_CAD\30252045\30252045.dwg C3.2 PAVING PLAN Mod: 2011 07 20 2:40pm by: jkimley@kha.com THIS DOCUMENT, TOGETHER WITH THE CONCEPTS AND DESIGNS PRESENTED HEREAFTER, IS INTENDED ONLY FOR THE SPECIFIC PURPOSE AND CLIENT FOR WHICH IT WAS PREPARED. REUSE OF AND IMPROPER RELIANCE ON THIS DOCUMENT WITHOUT WRITTEN AUTHORIZATION AND ADAPTATION BY KIMLEY-HORN AND ASSOCIATES, INC. SHALL BE WITHOUT LIABILITY TO KIMLEY-HORN AND ASSOCIATES, INC.