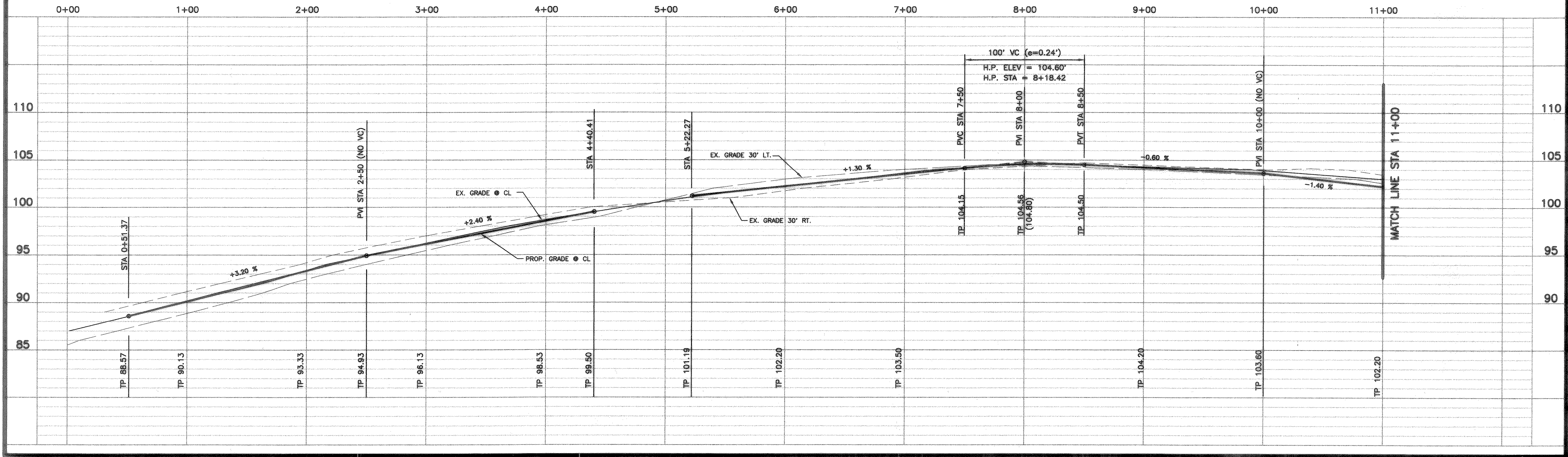


BENCHMARK: TOP OF 1/2" IRON ROD, SAID ROD BEING THE NORTHWEST PROPERTY CORNER. ROD IS LOCATED ON THE WEST SIDE OF WALLACE LANE.
 ASSUMED PLAN ELEV. = 99.21
 ACTUAL ELEV. = 561.62

NOTE: FOR TYPICAL PAVING SECTION AND PAVING/DRAINAGE GENERAL NOTES SEE SHEET 12.



F:\InActive\96148 - JONES The Oaks\6148PAV.DWG Mon Jan 12 16:17:34 2004 ALEX C.