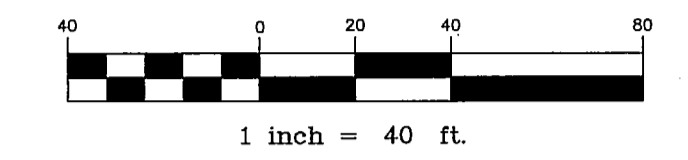
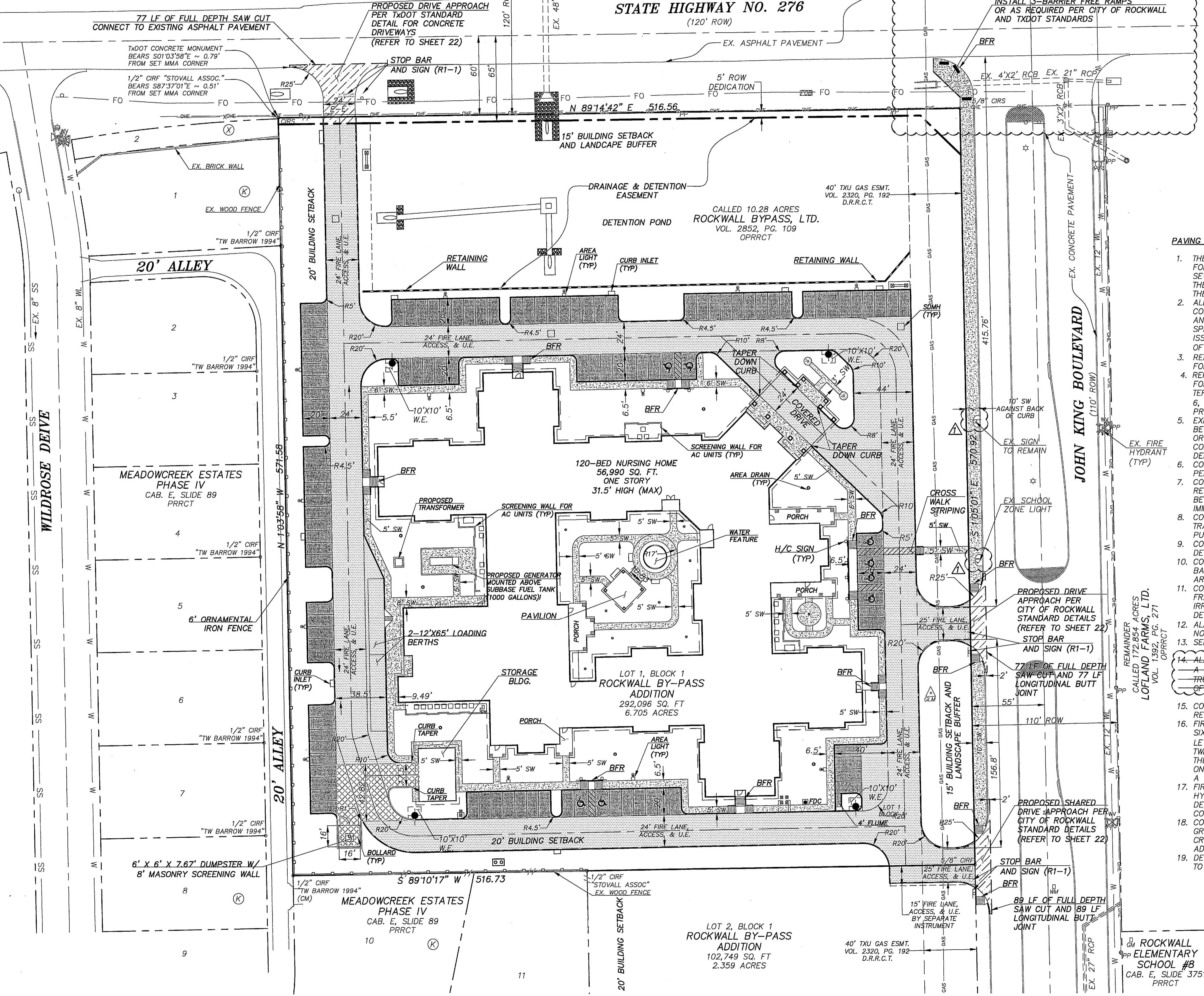


CONSTRUCTION JOINT NOTES:
 DUMMY JOINTS SHOULD BE FORMED BY ONE OF THE FOLLOWING METHODS: SAWED, HAND-FORMED OR FORMED BY PREMOLDED FILLER. JOINT DEPTH SHOULD BE EQUAL TO ONE-THIRD (1/3) OF THE SLAB THICKNESS. HAND FORMED JOINTS SHOULD HAVE A MAXIMUM EDGE RADIUS OF ONE-FOURTH (1/4) INCH. SAWING OF JOINTS SHOULD BEGIN AS SOON AS THE CONCRETE HAS HARDENED SUFFICIENTLY TO PERMIT SAWING WITHOUT EXCESSIVE RAVELING. ALL JOINTS SHOULD BE COMPLETED BEFORE UNCONTROLLED SHRINKAGE CRACKING OCCURS. JOINTS SHOULD BE CONTINUOUS ACROSS THE SLAB UNLESS INTERRUPTED BY FULL-DEPTH PREMOLDED JOINT FILLER AND SHOULD EXTENDED COMPLETELY THROUGH THE CURB. ALL JOINT OPENINGS SHALL BE CLEANED AND SEALED BEFORE OPENING PAVED AREA TO TRAFFIC.

JOINT SPACING
 EXPANSION JOINTS 80' MAX
 SAWED JOINTS 18' APPROX., 20' MAX FOR 5" AND 6" PAVEMENT
 CONSTRUCTION JOINTS LOCATED AT SAWED JOINTS OR EXPANSION JOINTS.

CAMBRIDGE COMPANIES, LTD.
 VOL. 99, PG. 1022
 DRRCT

CAMBRIDGE COMPANIES, LTD.
 VOL. 99, PG. 1022
 DRRCT

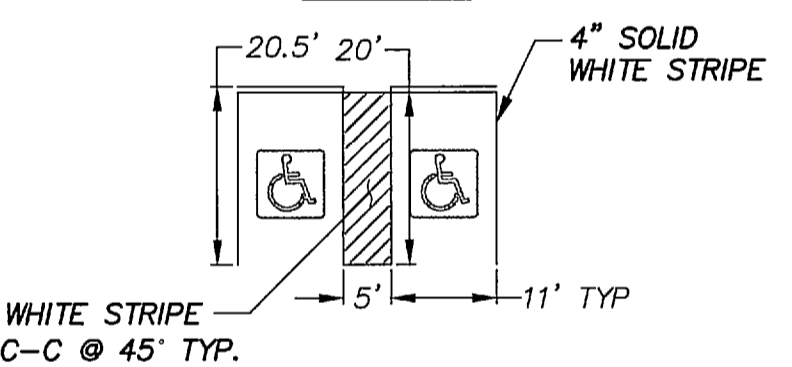


- LEGEND:**
- 4" - 3000 PSI CLASS "A" (5.5 SACK MIN.) CONCRETE SIDEWALK WITH #3 BARS @ 24" OCEW OVER 6" COMPACTED SUBGRADE TO 95% STD. PROCTOR DENSITY
 - 5" - 3000 PSI (5.5 SACK MIN.) CONCRETE PAVEMENT WITH #3 BARS @ 18" OCEW OVER 6" COMPACTED SUBGRADE TO 95% OF ASTM D698 (-1% TO +3% OPTIMUM MOISTURE CONTENT)
 - 6" - 3600 PSI CLASS "C" (6.5 SACK MIN.) CONCRETE PAVEMENT WITH #3 BARS @ 18" OCEW OVER 6" COMPACTED SUBGRADE TO 95% OF ASTM D698 (-1% TO +3% OPTIMUM MOISTURE CONTENT)
 - 7" - 3600 PSI CLASS "C" (6.5 SACK) CONCRETE PAVEMENT WITH #3 BARS @ 18" OCEW OVER 6" COMPACTED SUBGRADE TO 95% OF ASTM D698 (-1% TO +3% OPTIMUM MOISTURE CONTENT) (DUMPSTER AREA)
 - 8" - 3600 PSI CLASS "C" (6.5 SACK) CONCRETE PAVEMENT WITH #4 BARS @ 18" OCEW OVER 8" COMPACTED SUBGRADE TO 95% OF ASTM D698 (-1% TO +3% OPTIMUM MOISTURE CONTENT)
- PROPOSED BARRIER FREE RAMP BFR
 SIDEWALK SW

PAVING NOTES:

1. THE PAVING CONTRACTOR SHALL BE RESPONSIBLE FOR THE ADJUSTMENT OF WATER AND SANITARY SEWER APPURTENANCES IN ACCORDANCE WITH THE STANDARD DETAILS AND SPECIFICATION OF THE CITY OF ROCKWALL.
2. ALL MATERIALS AND WORKMANSHIP SHALL CONFORM TO THE CITY OF ROCKWALL STANDARDS AND SPECIFICATION, AND TO THE STANDARD SPECIFICATION FOR PUBLIC WORKS CONSTRUCTION ISSUED BY THE NORTH CENTRAL TEXAS COUNCIL OF GOVERNMENT (NCTCOG) 3RD EDITION.
3. REFER TO DIMENSION CONTROL PLAN (SHEET 6) FOR ALL DIMENSIONS.
4. REFER TO GEOTECHNICAL ENGINEERING REPORT FOR OAC SENIOR LIVING CENTER PREPARED BY TERRACON CONSULTANTS, INC. DATED SEPTEMBER 6, 2012 (PROJECT NO. 94125167) FOR SUBGRADE PREPARATION & STABILIZATION REQUIREMENTS.
5. EXPANSION JOINTS OR ISOLATION JOINTS SHALL BE USED TO ISOLATE FIXED OBJECTS ABUTTING OR WITHIN THE PAVED AREA. THEY SHOULD CONTAIN PREMOLDED JOINT FILLER FOR THE FULL DEPTH OF THE SLAB.
6. CONTRACTOR SHALL OBTAIN AND PAY FOR ALL PERMITS REQUIRED.
7. CONCRETE SURFACE FINISHING SHALL BE SKID RESISTANT. A LIQUID CURING COMPOUND SHALL BE UNIFORMLY SPRAYED ON THE CONCRETE IMMEDIATELY AFTER THE FINISHED OPERATION.
8. CONTRACTOR IS RESPONSIBLE FOR PROVIDING A TRAFFIC CONTROL PLAN FOR ALL WORK IN THE PUBLIC RIGHT-OF-WAY.
9. CONTRACTOR SHALL PROVIDE ALL SAFETY DEVICES FOR THE PROTECTION OF THE PUBLIC.
10. CONCRETE PAVEMENT AND STRUCTURES SHALL BE BACKFILLED AS SOON AS POSSIBLE AFTER FORMS ARE REMOVED.
11. CONTRACTOR RESPONSIBLE FOR IRRIGATION AND FRANCHISE UTILITY SLEEVING. REFERENCE IRRIGATION PLAN FOR IRRIGATION SLEEVING DETAILS.
12. ALL CURBS TO BE 6" HIGH UNLESS OTHERWISE NOTED.
13. SEE SHEET 22 FOR PAVING DETAILS
14. ALL PRIVATE BARRIER FREE RAMPS SHALL HAVE A DETECTABLE WARNING SURFACE (AKA TRUNGATED-DOMES) THE FULL DEPTH AND WIDTH OF RAMP.
15. CONTRACTOR TO PROVIDE JOINTING PLAN FOR REVIEW & APPROVAL BY ENGINEER.
16. FIRE LANES SHALL BE PROPERLY MARKED WITH A SIX INCH RED STRIPE WITH FOUR INCH WHITE LETTERS STATING "FIRE LANE NO PARKING" EVERY TWENTY-FIVE FEET ALONG THE ENTIRE LENGTH OF THE FIRE LANE. FIRE LANE MARKINGS SHALL BE ON THE VERTICAL SURFACE OF THE CURB WHEN A CURB IS PRESENT.
17. FIRE LANE ACCESS MUST BE COMPLETE AND FIRE HYDRANTS MUST BE APPROVED BY THE FIRE DEPARTMENT AND MUST BE IN-SERVICE PRIOR TO CONSTRUCTION PROGRESSING ABOVE FOUNDATION.
18. CONTRACTOR IS RESPONSIBLE FOR ENSURING GRADES ON ALL WALKS DO NOT EXCEED 2% CROSS SLOPE AND 5% LONGITUDINAL SLOPE. ADJUST GRADES AS NECESSARY.
19. DETENTION POND MUST BE OPERATIONAL PRIOR TO PAVING OPERATIONS.

TYPICAL ACCESSIBLE PARKING DETAIL



RESPONSIBILITY NOTE:
 "ALL RESPONSIBILITY FOR ADEQUACY DESIGN REMAINS WITH THE DESIGN ENGINEER. THE CITY OF ROCKWALL, IN REVIEWING AND RELEASING PLANS FOR CONSTRUCTION, ASSUMES NO RESPONSIBILITY FOR ADEQUACY OR ACCURACY OF DESIGN."

BENCHMARK:
 BM NO. 1
 CITY OF ROCKWALL R-19. BRASS MONUMENT AT THE NORTHWEST CORNER OF SILVERVIEW & DIAMOND WAY, ±500' SOUTH OF SH 276.
 PUBLISHED NAVD88 ELEV: 600.69'

GENERAL UTILITY NOTES:
 ALL EXISTING UTILITY DATA IS PROVIDED FOR INFORMATION ONLY. ALTHOUGH THIS DATA IS SHOWN AS ACCURATELY AS POSSIBLE, THE CONTRACTOR IS CAUTIONED THAT THE OWNER AND THE ENGINEER NEITHER ASSUMES NOR IMPLIES ANY RESPONSIBILITY FOR THE ACCURACY OF THIS DATA. IT SHALL BE THE CONTRACTOR'S RESPONSIBILITY TO CONTACT THE UTILITY AFFECTED AND VERIFY THESE LOCATIONS AND ELEVATIONS PRIOR TO CONSTRUCTION.

CALL 1-800-344-8377 (DIG-TESS) OR OTHER UTILITY LOCATING SERVICES 48 HOURS PRIOR TO CONSTRUCTION ACTIVITY. MYCOSKIE MCINNIS ASSOCIATES, INC. IS NOT RESPONSIBLE FOR KNOWING ALL EXISTING UTILITIES OR DEPICTING EXACT LOCATIONS OF UTILITIES ON DRAWINGS.

**OAC SENIOR LIVING, LLC.
 ROCKWALL BY-PASS ADDITION
 PAVING PLAN
 ROCKWALL, TEXAS**

PROJECT TITLE:
 OAC SENIOR LIVING, LLC.
 ROCKWALL BY-PASS ADDN.

mima
 mycoskie+mcinnis+associates
 civil engineering surveying landscape architecture planning
 type registration number: f - 2759
 200 east obrom
 arlington, texas 76010
 817-469-1671
 fax: 817-274-8757
 www.mmatexas.com

STATE OF TEXAS
 ANDRES E. CASCO
 94938
 LICENSED PROFESSIONAL ENGINEER
 RECORD DRAWINGS

PROJECT NUMBER: 2651-00-01
 PROJECT MANAGER: J. SUMPTER
 DRAWN BY: S BELL
 CHECKED BY: A. CASCO
 ISSUE DATE: 04/30/2013

TO THE BEST OF OUR KNOWLEDGE MYCOSKIE MCINNIS ASSOCIATES, INC. HEREBY STATES THAT THIS PLAN IS AS-BUILT. THIS IS BASED ON SURVEY DATA, VISUAL POST-CONSTRUCTION FIELD OBSERVATIONS AND INFORMATION PROVIDED BY THE CONTRACTOR.

02.12.15 RECORD DRAWINGS AEC

02.12.15 AS-BUILT REVISIONS AEC

REV. DATE DESCRIP. BY

CONTRACT CONTENT:
PAVING PLAN

SHEET NO:
7
 COPYRIGHT © 2013 MMA, INC.