

NOTE: Construct 4" High 18" Long Water Stops @ Downstream side of Inlets

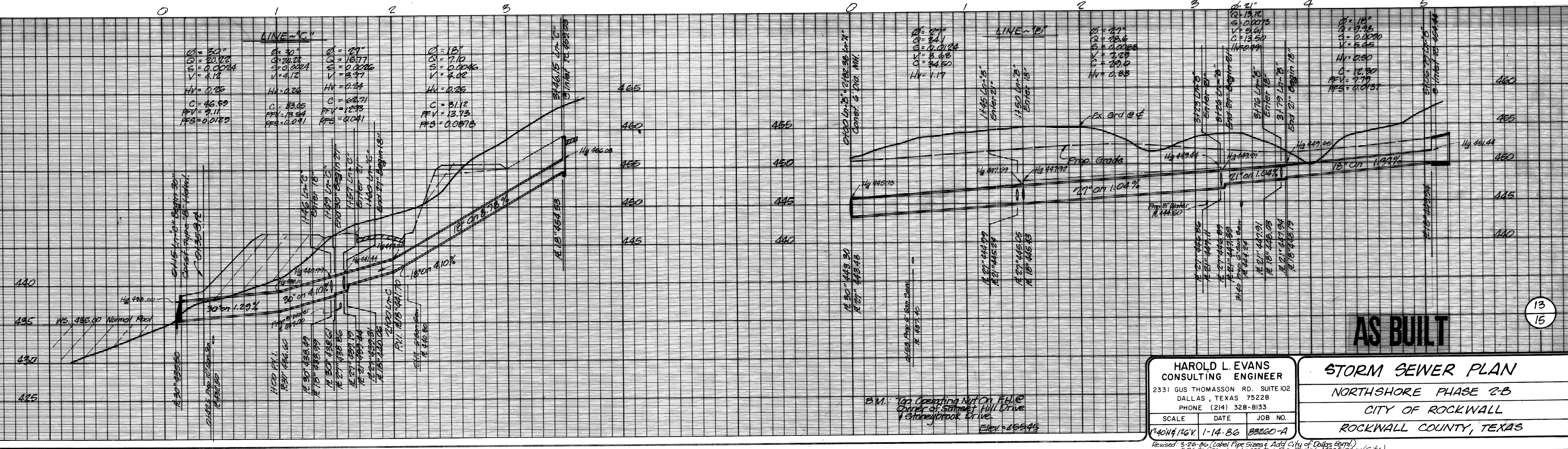
LINE "C"

$D = 30"$ $Q = 20.22$ $S = 0.0024$ $V = 4.12$ $HW = 0.05$ $C = 46.89$ $RV = 3.11$ $RF3 = 0.0129$	$D = 24"$ $Q = 18.77$ $S = 0.0026$ $V = 3.97$ $HW = 0.24$ $C = 68.71$ $RV = 12.93$ $RF3 = 0.041$	$D = 18"$ $Q = 7.10$ $S = 0.0046$ $V = 4.02$ $HW = 0.26$ $C = 31.12$ $RV = 13.73$ $RF3 = 0.0676$
---	---	---

LINE "B"

$D = 24"$ $Q = 34.1$ $S = 0.0024$ $V = 4.48$ $C = 34.50$ $HW = 1.17$	$D = 24"$ $Q = 34.1$ $S = 0.0024$ $V = 4.48$ $C = 34.50$ $HW = 1.17$
---	---

$D = 18"$ $Q = 13.98$ $S = 0.0020$ $V = 5.45$ $HW = 0.50$ $C = 12.80$ $RV = 7.79$ $RF3 = 0.0137$



AS BUILT

13
15

HAROLD L. EVANS CONSULTING ENGINEER 2331 GUS THOMASSON RD. SUITE 102 DALLAS, TEXAS 75228 PHONE (214) 328-8133			STORM SEWER PLAN NORTHSHORE PHASE 2-B CITY OF ROCKWALL ROCKWALL COUNTY, TEXAS		
SCALE	DATE	JOB NO.	SCALE	DATE	JOB NO.
1"=40' & 1/2"	1-14-86	88260-A			
<small>Revised: 3-26-86 (Label Pipe Sizes & Add City of Dallas Cont.) 5-20-86 (Shorten Line C Per The City Meeting w/ City) 6-20-86 (Add Conc. Rip Rap @ Inlet)</small>					