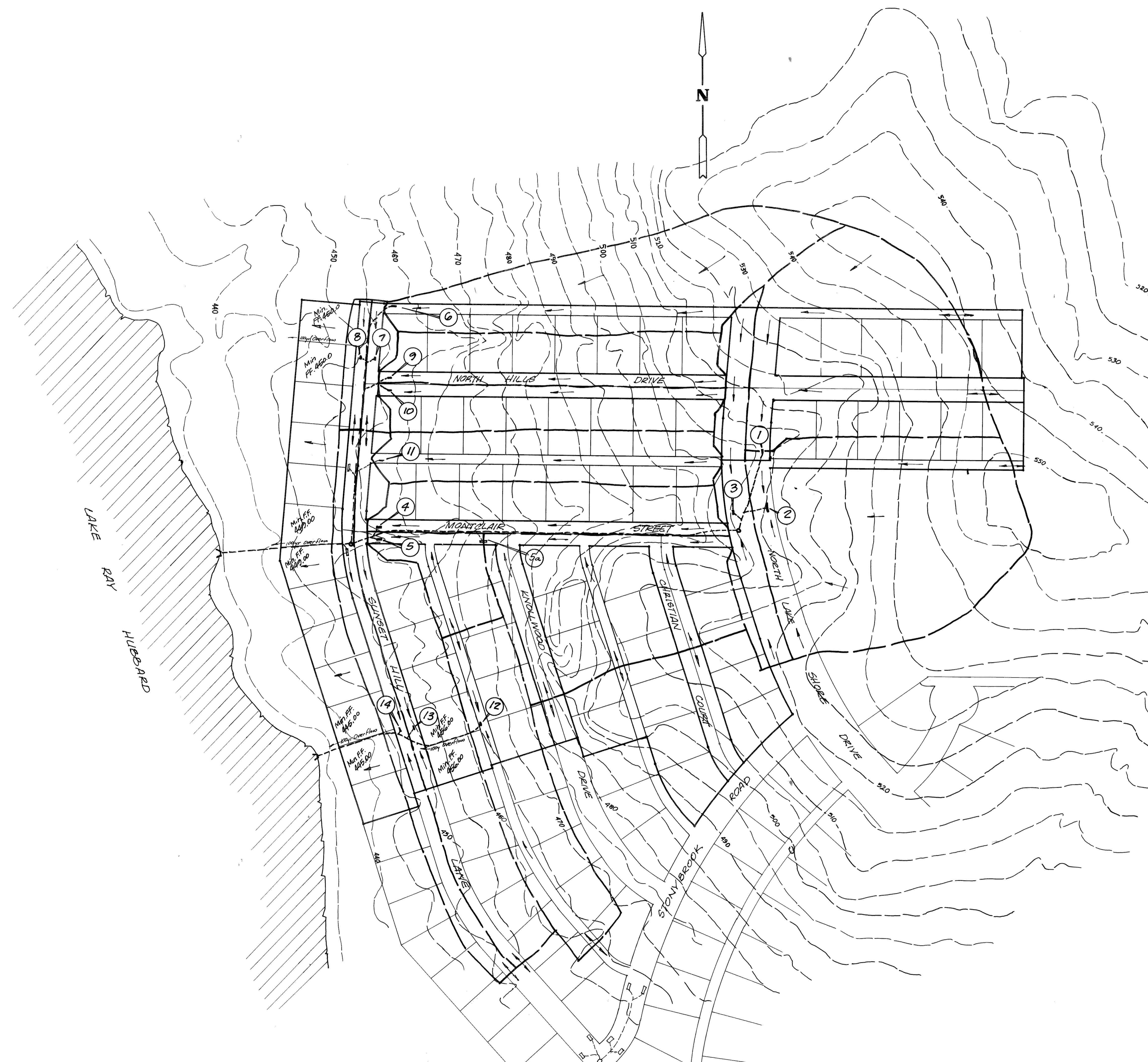


CITY OF ROCKWALL, TEXAS
COMPUTATION SHEET FOR DETERMINING
CAPACITY OF CURB OPENING INLET

INLET TYPE & NO.	STATION	D.A. NO.	Qp C.F.S.	CARRY OVER FLOW C.F.S.	TOTAL FLOW Qc C.F.S.	Z	Z/H	So FT/FT	Yo FT.	PONDED WIDTH	Q Ls C.F.S.	Lo Qc/Lo FT.	L FT.	L Lo	Q Qc	Qc Qc+Qp	CARRY OVER FLOW C.F.S.	REMARKS
10'	91+03 RT.	1	12.48	—	12.48	48	300	0.034	0.20	14	0.92	15.56	10	0.74	0.81	10.10	2.38	
16'	91+87.50 RT.	2	15.68	2.38	18.06	48	300	0.034	0.20	24	1.15	15.70	16	1.02	1	18.06	—	Exist. System
5'	91+87.50 LT.	3	3.66	—	3.66	48	300	0.034	0.20	14	0.915	3.97	5	1.25	1	3.65	—	
10'	91+80 LT.	4	5.50	—	5.50	28	1150	0.086	0.24	6.72	0.86	6.39	10	1.56	1	5.50	—	
10'	91+55 RT.	5	2.43	—	2.43	28	1150	0.086	0.18	5.04	0.80	3.02	10	3.31	1	2.43	—	
15'	91+44 LT.	6	7.98	—	7.98	20	1250	0.070	0.23	6.6	0.955	10.45	15	1.44	1	7.98	—	
5'	91+44 RT.	7	1.62	—	1.62	28	1150	0.086	0.23	9.24	0.955	1.70	5	2.94	1	1.62	—	
5'	91+44 LT.	8	1.52	—	1.52	28	1150	0.086	0.23	8.96	0.94	1.62	5	3.08	1	1.52	—	
10'	91+22 LT.	9	8.13	—	8.13	28	1150	0.086	0.26	7.28	0.88	9.24	10	1.08	1	8.13	—	
10'	91+22 RT.	10	7.35	—	7.35	28	1150	0.086	0.26	7.28	0.88	8.35	10	1.19	1	7.35	—	
10'	91+00 LT.	11	5.5	—	5.5	20	1250	0.070	0.26	5.2	0.88	6.25	10	1.6	1	5.5	—	
10'	91+00 RT.	12	7.10	—	7.10	20	1250	0.070	0.20	4.0	0.82	8.86	10	1.13	1	7.10	—	
10'	91+00 LT.	13	8.67	—	8.67	28	1150	0.086	0.40	11.2	1.03	8.42	10	1.19	1	8.67	—	
15'	91+00 RT.	14	4.45	—	4.45	28	1150	0.086	0.20	3.60	0.82	5.43	15	2.76	1	4.45	—	
15'	91+00 RT.	5a	8.42	—	8.42	28	1150	0.070	0.28	7.84	0.90	9.35	15	1.60	1	8.42	—	



DRAINAGE DATA

Area	Acres	C	Lc	Is	Qs	Qs Accum.	I ₁₀₀	Q ₁₀₀	Q ₁₀₀ Accum.
1	3.90	0.50	10	6.4	12.48	—	9.8	19.11	—
2	4.90	0.50	10	6.4	15.68	28.16	9.8	34.01	43.12
3	1.14	0.50	10	6.4	3.65	31.81	9.8	5.53	48.70
4	1.72	0.50	10	6.4	5.50	37.31	9.8	8.43	57.13
5	0.76	0.50	10	6.4	2.43	43.16	9.8	3.72	73.74
6	3.12	0.50	10	6.4	7.98	58.14	9.8	15.27	89.03
7	0.33	0.50	10	6.4	1.06	59.2	9.8	1.62	90.65
8	0.31	0.50	10	6.4	0.99	60.19	9.8	1.52	92.17
9	1.06	0.50	10	6.4	5.31	65.5	9.8	8.13	100.30
10	1.50	0.50	10	6.4	4.80	70.3	9.8	7.35	107.65
11	1.72	0.50	10	6.4	5.50	75.8	9.8	8.43	116.08
12	2.22	0.50	10	6.4	7.10	—	9.8	10.88	—
13	2.71	0.50	10	6.4	8.67	15.77	9.8	13.28	24.16
14	1.99	0.50	10	6.4	4.45	20.22	9.8	6.81	30.97
5a	2.63	0.50	10	6.4	8.42	45.73	9.8	12.89	70.02

AS BUILT

11
15

HAROLD L. EVANS
CONSULTING ENGINEER
2331 GUS THOMASSON RD. SUITE 102
DALLAS, TEXAS 75228
PHONE (214) 328-8133

DRAINAGE AREA MAP
NORTHSHORE PHASE 2-B
CITY OF ROCKWALL
ROCKWALL COUNTY, TEXAS

SCALE: 1" = 100'
DATE: 1-13-86
JOB NO.: 83260-A