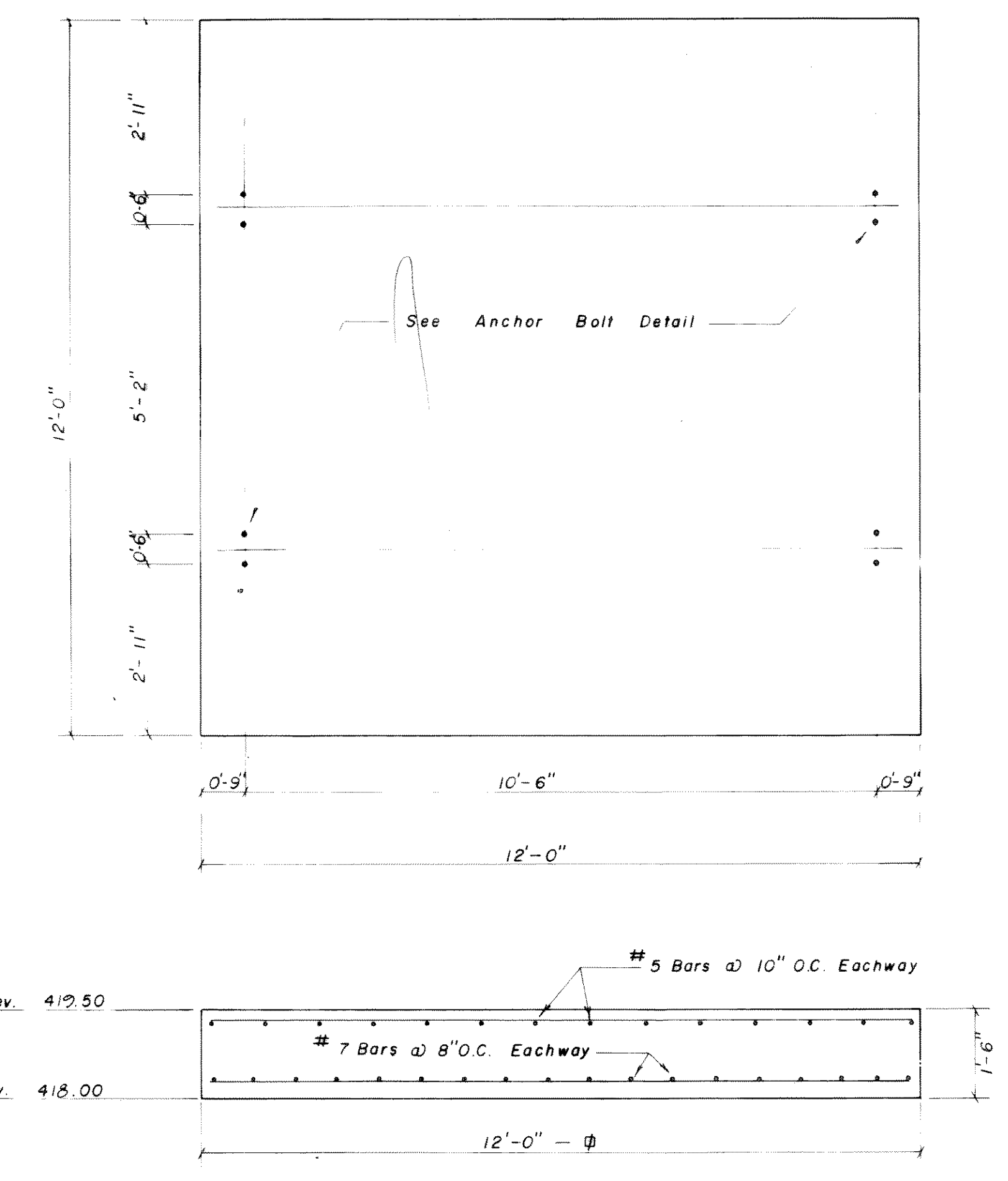
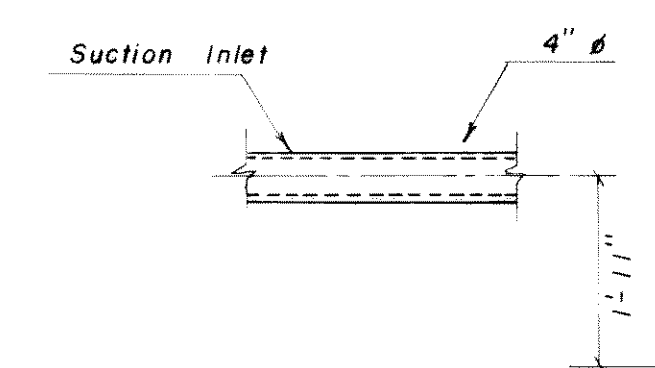
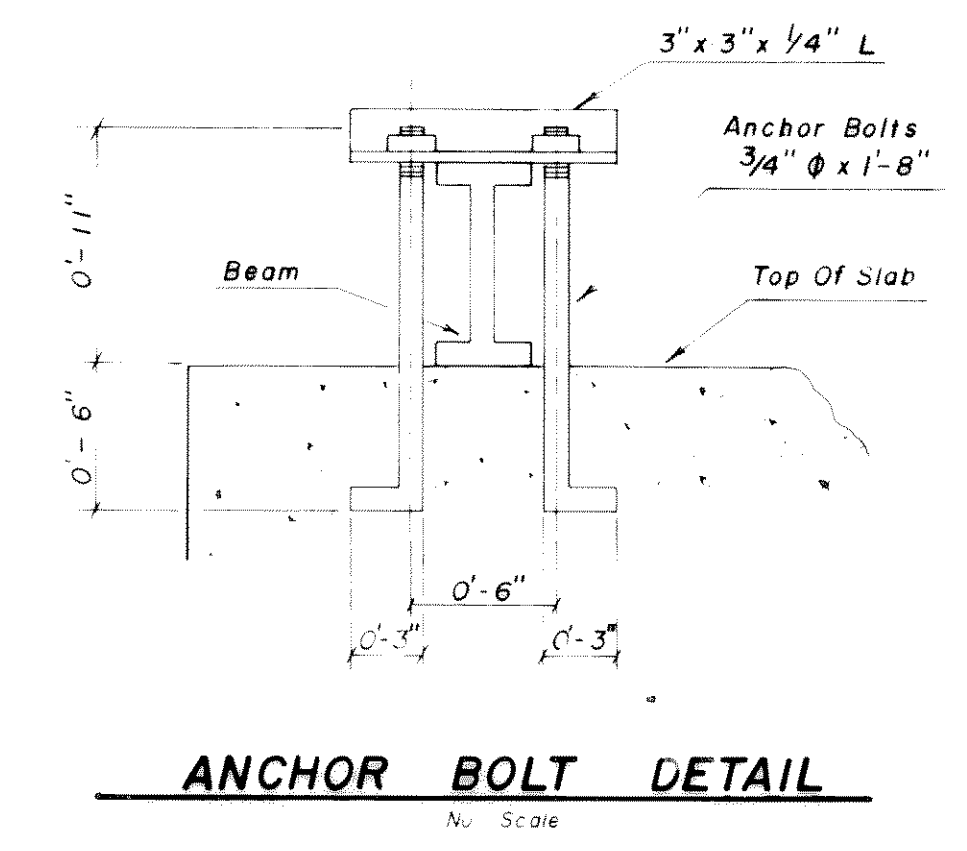
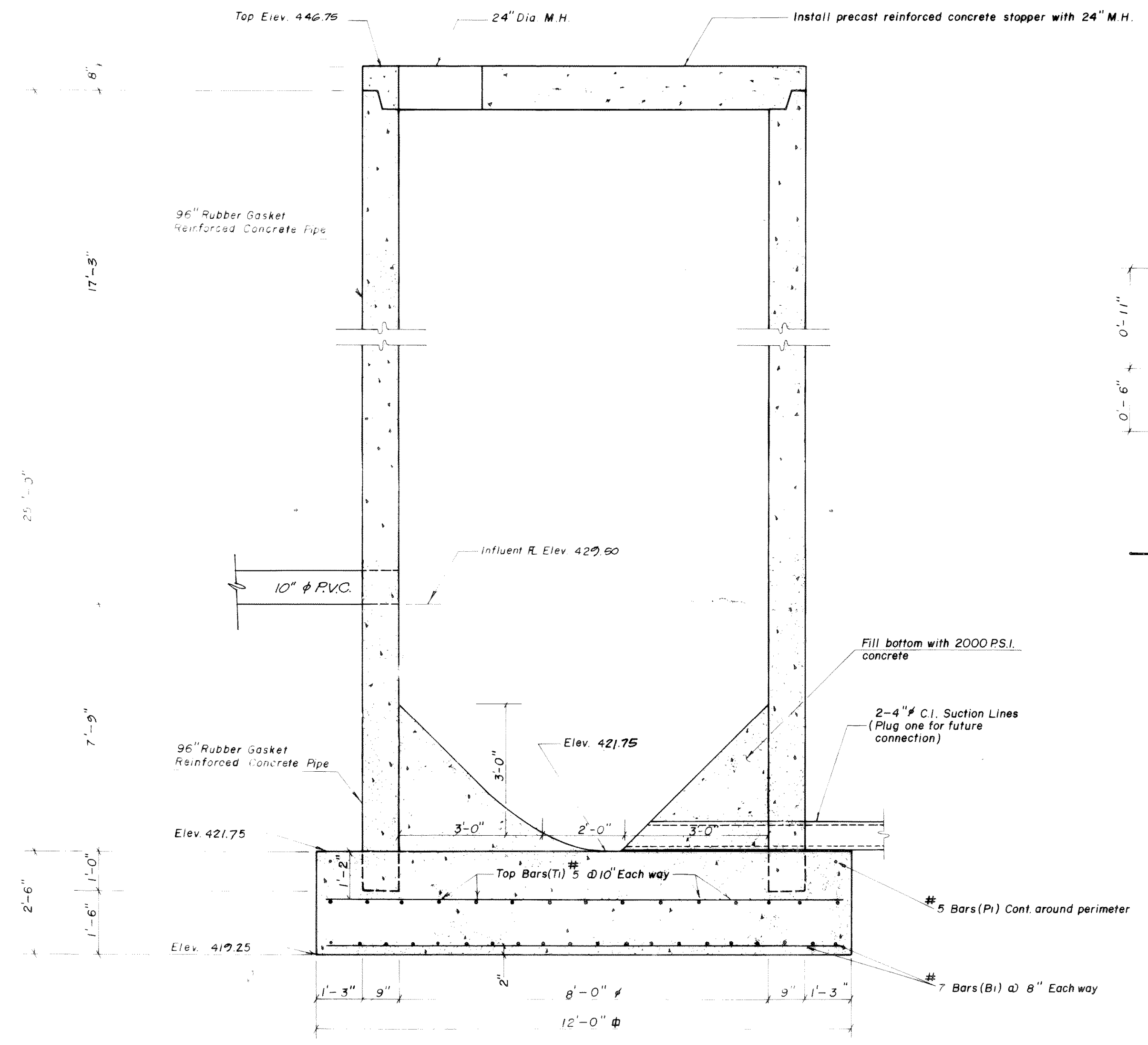


GENERAL NOTES
All concrete shall have a minimum strength of 3000 p.s.i. in 28 days.
Reinforcing steel shall conform to A.S.T.M. A615-40.



LIFT STATION SLAB
Scale 1" = 20"

AS BUILT

WET WELL
Not to Scale

DESIGN				DRAWN				DATE				SCALE			
J. C.				R. M. H.				6 / 74				AS SHOWN			
WET WELL DETAILS								NORTHSHORE							
PHASE 2 - A								ROCKWALL, TEXAS							
328-8133 HAROLD EVANS & CONSULTING ENGINEER DALLAS												83200			

REVISED 6-29-80
REVISED 10-13-78