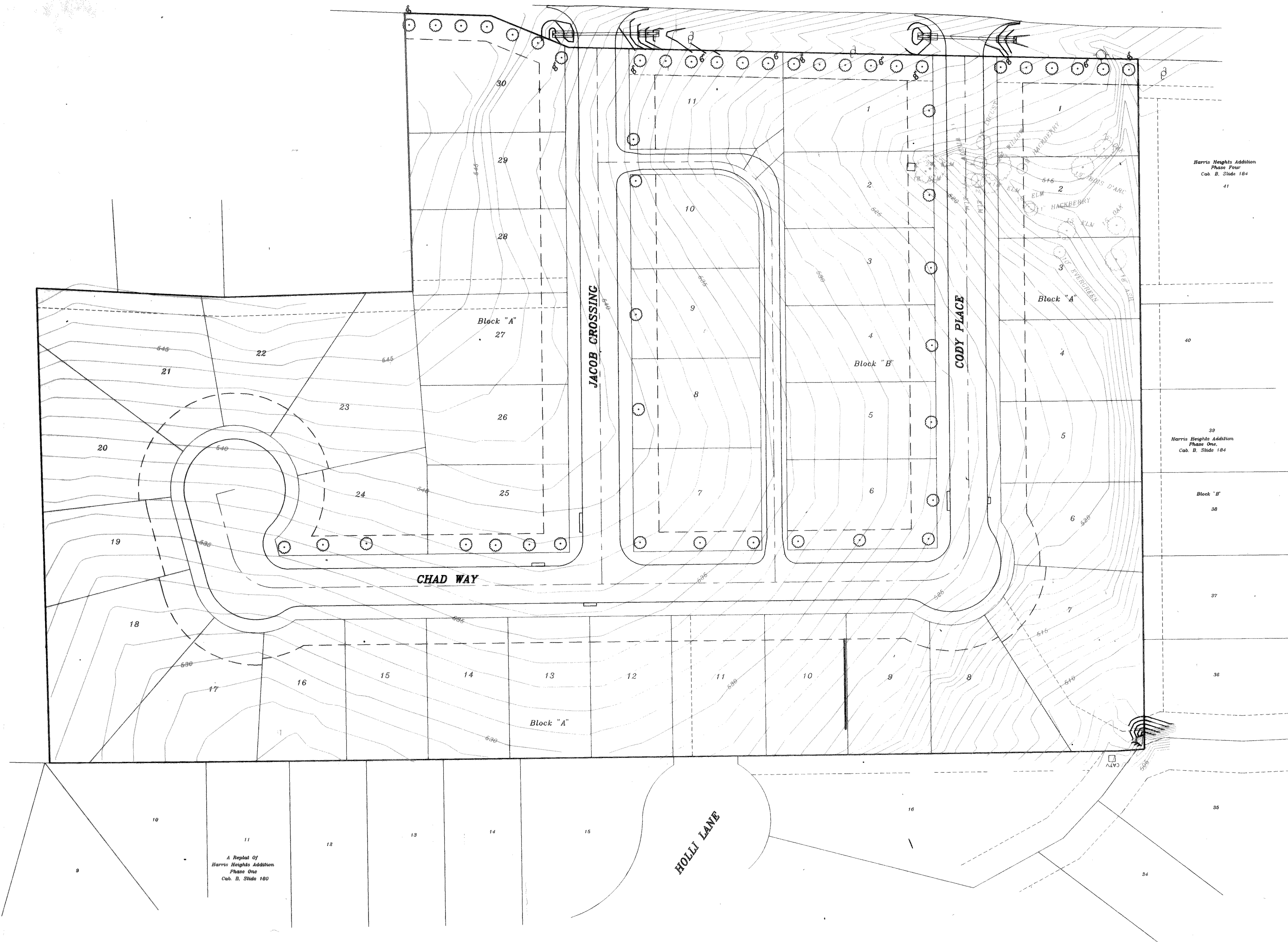


NORTH GOLIAD (STATE HWY. 205)



- TREE LIST**
- 1 - 18" ASH
 - 1 - 19" BOIS D'ARC
 - 1 - 10" ELM
 - 1 - 11" ELM
 - 1 - 12" ELM
 - 1 - 15" ELM
 - 1 - 16" ELM
 - 1 - 18" ELM
 - 1 - 24" ELM
 - 1 - 10" EVERGREEN
 - 1 - 9" HACKBERRY
 - 1 - 11" HACKBERRY
 - 1 - 12" LOCUST
 - 1 - 15" OAK
 - 1 - 15" OAK
 - 1 - 11" WILLOW
- TOTAL DIAMETER INCHES - 226

4-6", 7-8", AND 37-4" REPLACEMENT TREES WILL BE NATIVE TREES REMOVED FROM THIS SITE AND THE ASSISTED LIVING SITE AT P.M. 740 AND SUMMER LEE DRIVE.

ALTERNATIVE TREE REPLACEMENT:
76 - 3" OAKS

- LEGEND**
- TREE TO BE REMOVED
 - TREE REPLACEMENT

AS BUILT

5-98

B.M.
TOP EXIST SAN. SEW. M.H. 7.5' +/-
EAST AND 30' +/- SOUTH OF THE
N.E. CORNER OF PROJECT
ELEV. 504.46

TOP EXIST SAN. SEW. M.H. 9' +/-
EAST AND 124' +/- NORTH OF THE
N.E. CORNER OF PROJECT
ELEV. 506.86

REVISION DESCRIPTION		DATE	SCALE	DESIGN	DRAWN	HAROLD L. EVANS CONSULTING ENGINEER P.O. BOX 28395 2331 GUS THOMASSON ROAD, SUITE 102 DALLAS, TEXAS 75228, (214) 328-8133	TREE SURVEY TOWNE NORTH ADDITION CITY OF ROCKWALL	SHEET NO.
		5/19/98	1" = 40'	H.L.E.				9
							JOB NO.	97127