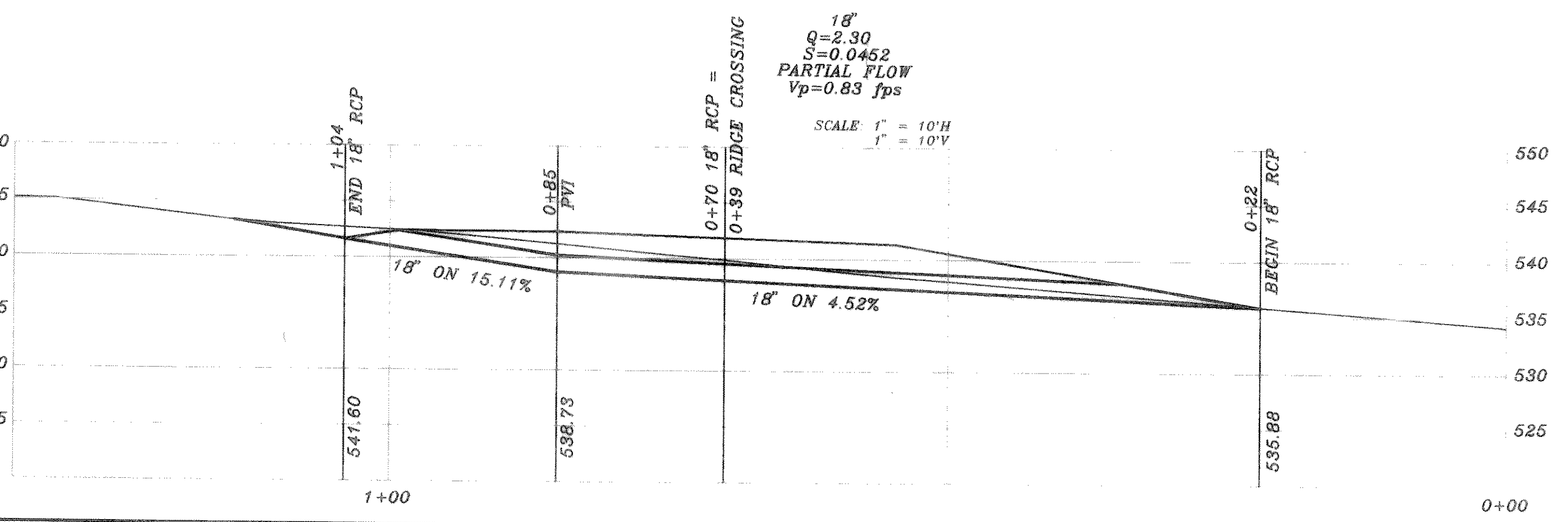
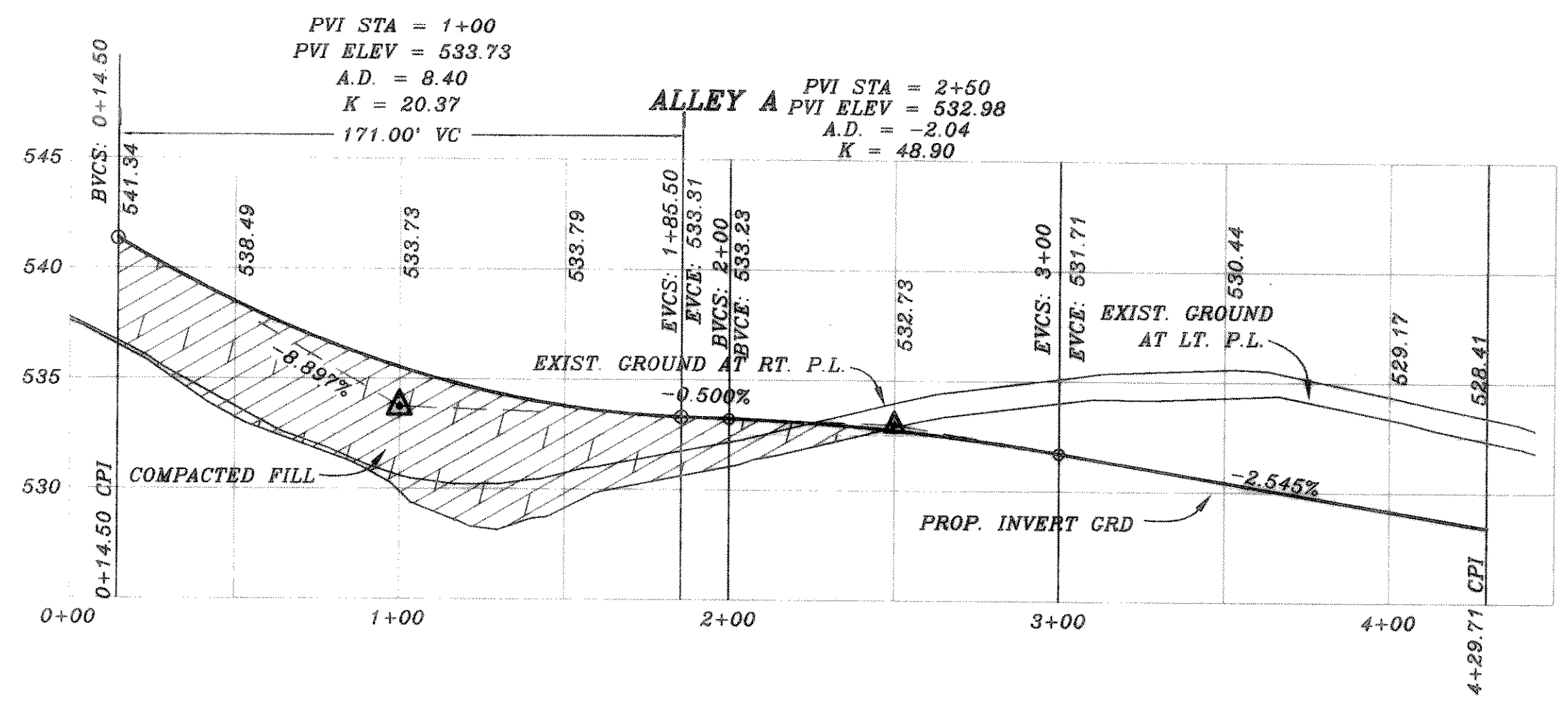
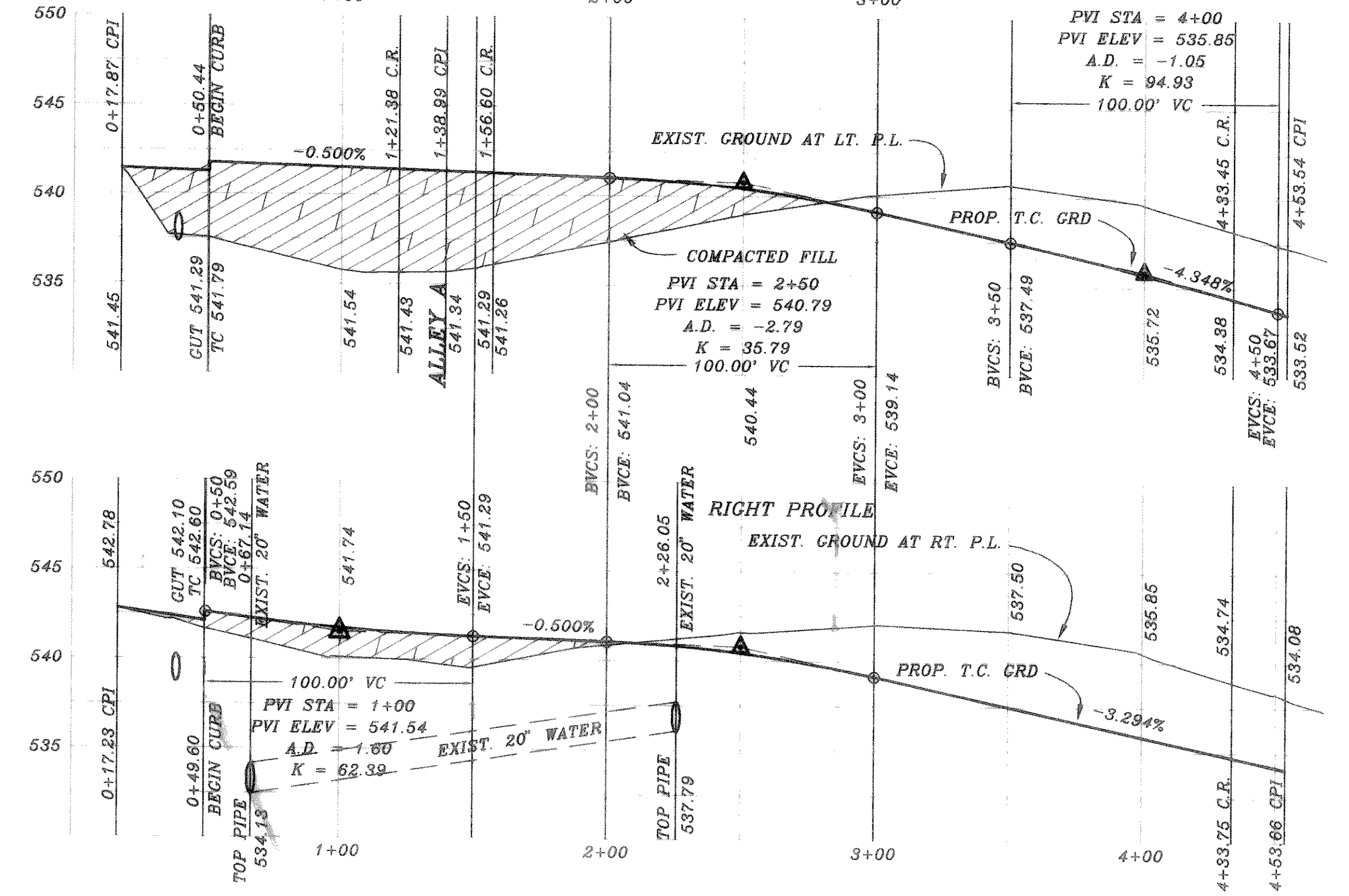


CURVE	RADIUS	LENGTH	TANGENT	CHORD	BEARING	DELTA
C1	45.00'	70.89'	45.00'	63.64'	S44°34'12" W	90°00'00"
C2	20.00'	31.42'	20.00'	28.28'	S44°34'12" W	90°00'00"

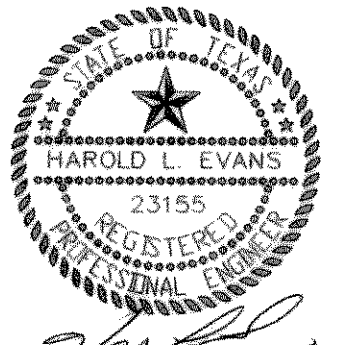
**JACOB CROSSING**  
LEFT PROFILE



B.M.  
 TOP EXIST. SAN. SEW. M.H. 7.5' +/-  
 EAST AND 30' +/- SOUTH OF THE  
 N.E. CORNER OF PROJECT  
 ELEV.: 504.46

TOP EXIST. SAN. SEW. M.H. 9' +/-  
 EAST AND 124' +/- NORTH OF THE  
 N.E. CORNER OF PROJECT  
 ELEV.: 508.86

AS BUILT



REVISION DESCRIPTION	DATE	SCALE	DESIGN	DRAWN
REV PER CITY STAFF PRECONST COMMENTS	5/26/98			
REV PER CITY LETTER	4/5/98			
REV PER CITY REVIEW	4/3/98			
	2/19/98	1" = 40' 1" = 6'	H.L.E.	

**HAROLD L. EVANS**  
 CONSULTING ENGINEER  
 P.O. BOX 28355  
 2331 GUS THOMASSON ROAD, SUITE 102  
 DALLAS, TEXAS 75228 (214) 388-8133

**PROPOSED PAVING**  
**RIDGE CROSSING**  
**NORTH TOWNE ADDITION**  
**CITY OF ROCKWALL**

SHEET NO.	4
JOB NO.	97127