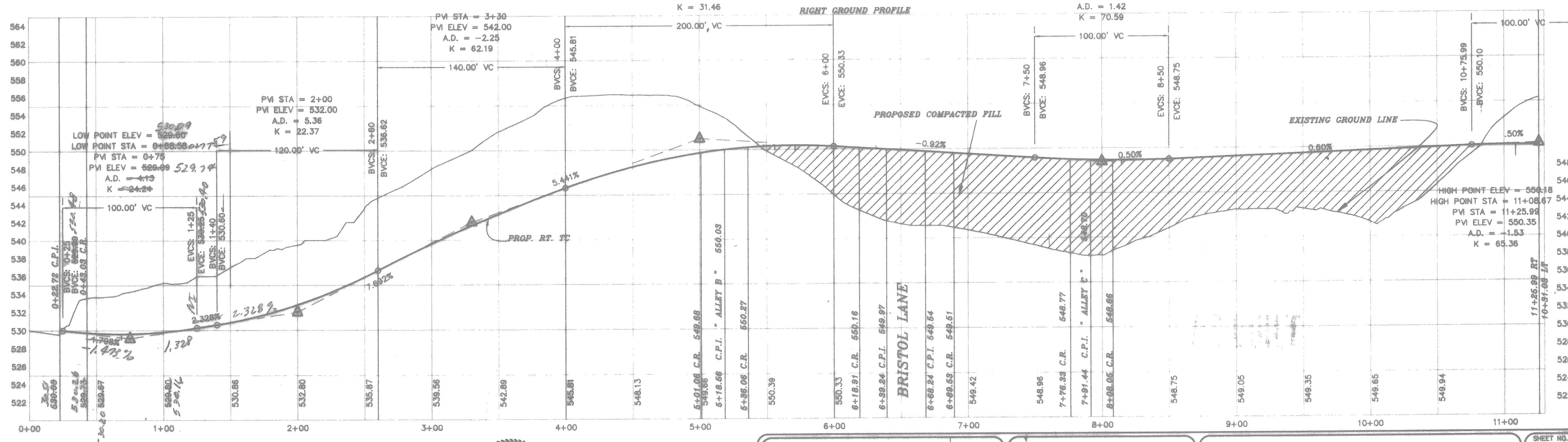
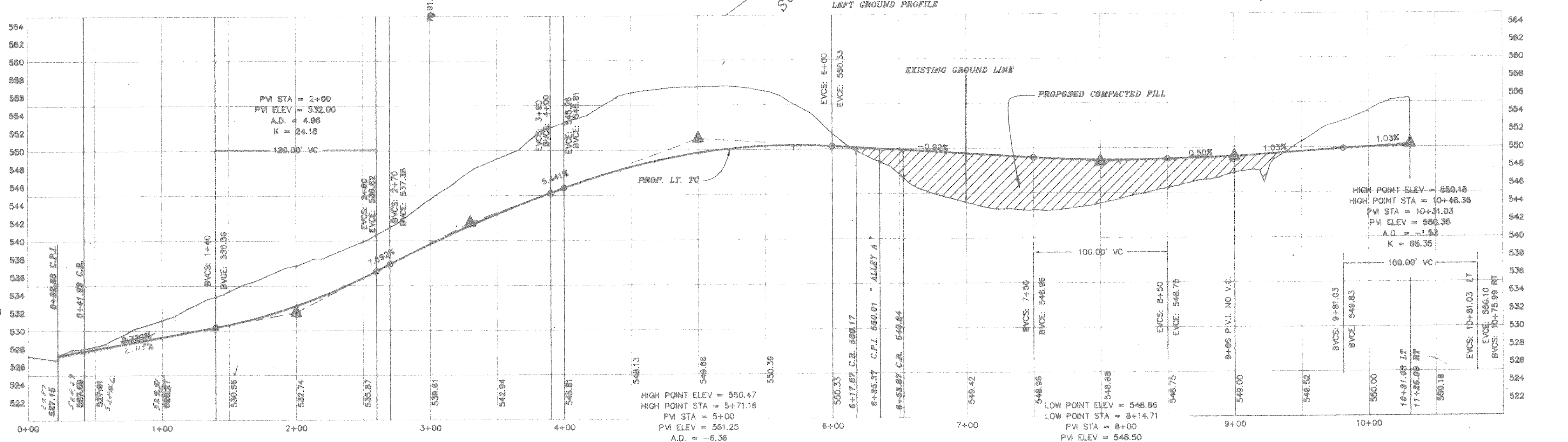
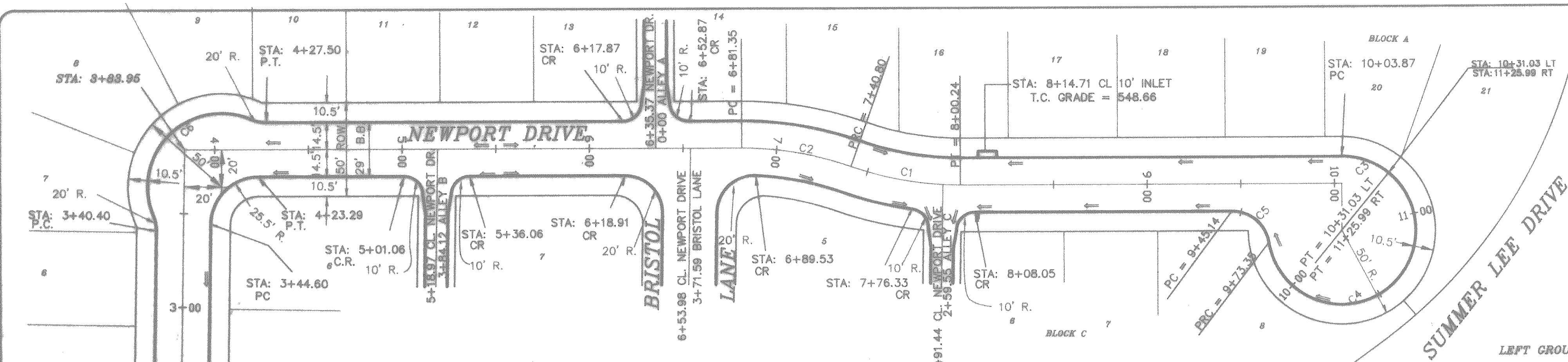


CURVE	RADIUS	LENGTH	TANGENT	CHORD	BEARING	DELTA
C1	175.00'	59.45'	30.01'	59.16'	S36°51'40"E	19°27'47"
C2	175.00'	59.45'	30.01'	59.16'	N36°51'40"W	19°27'47"
C3	39.50'	27.16'	14.14'	26.63'	N26°53'34"W	39°23'58"
C4	39.50'	152.64'	104.50'	73.90'	S76°29'11"E	221°24'48"
C5	20.00'	28.21'	17.03'	25.93'	N06°11'10"W	80°48'45"
C6	39.50'	94.02'	98.69'	73.34'	S88°52'43"W	136°22'17"



SAW CUT, REMOVE & REPLACE 18" X 60" EXIST PAV. CONNECT TO EXIST REBAR

B.M.  
TOP OF MANHOLE @ NEAR THE WEST CORNER OF LOT 44 CHANDLERS LANDING PHASE 2D  
ELEVATION = 516.72

B.M.  
SQUARE CUT @ CONC. BASE OF CIVIL DEFENCE SIREN NEAR THE WEST CORNER OF LOT 1 BLOCK A.  
ELEVATION = 520.33



REVISION DESCRIPTION	DATE
REV. GRADES	6/10/96
REV. PER 2nd CITY REVIEW	12/10/96
REV. PER CITY REVIEW	10/25/95

**HAROLD L. EVANS**  
CONSULTING ENGINEER  
P.O. BOX 28865  
2881 GUS THOMASSON ROAD, SUITE 102  
DALLAS, TEXAS 76228, (214) 328-8138

**PAVING PLAN**  
**MISTIC & NEWPORT DRIVE**  
**NEWPORT PLACE**  
**CITY OF ROCKWALL**

SHEET NO. 4  
JOB NO. 9661