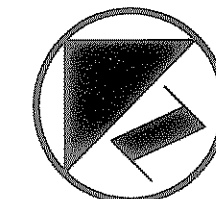


INTERSTATE HIGHWAY 30
(VARIABLE WIDTH RIGHT-OF-WAY)

POINT OF BEGINNING
CUT IN CONCRETE FOUND (C.M.)

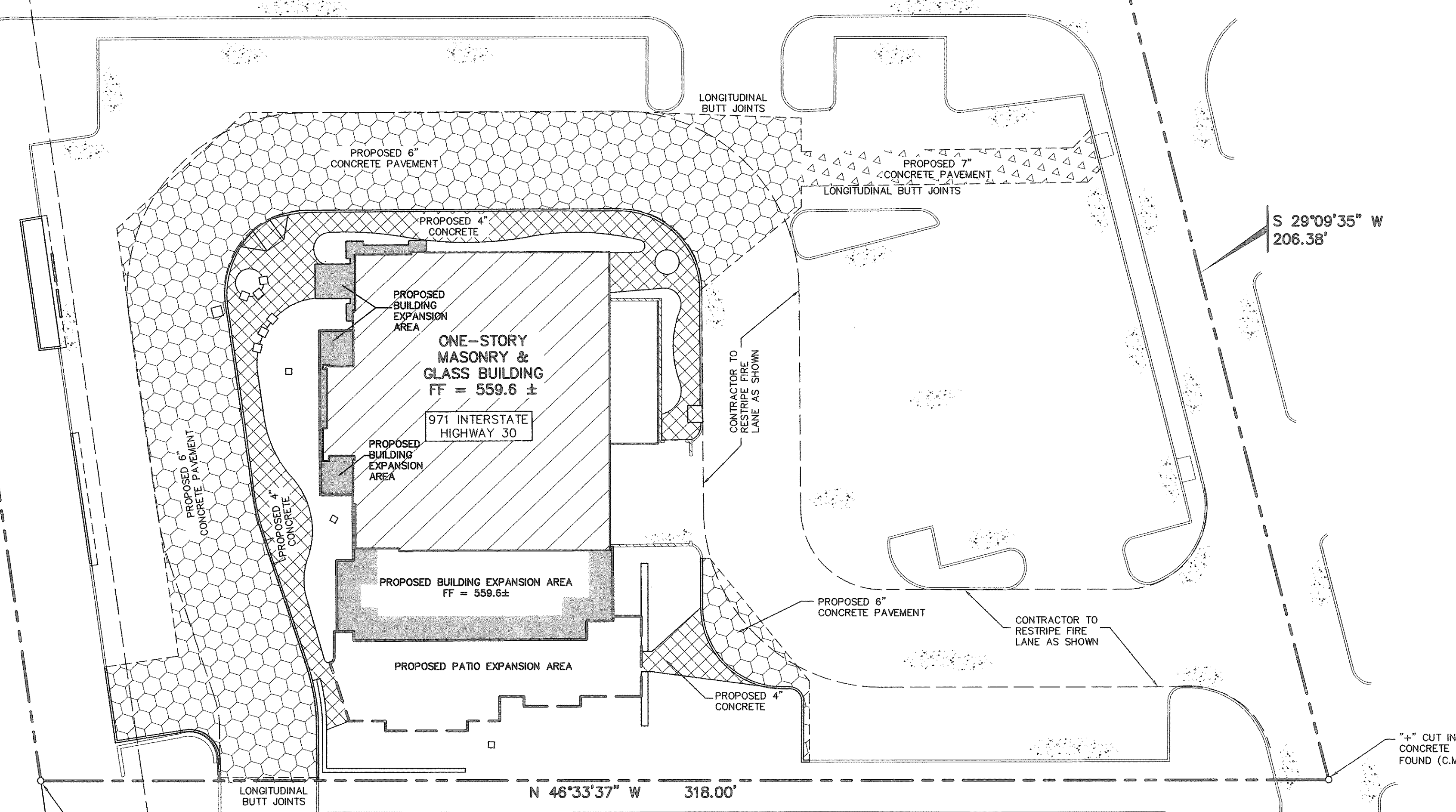
S 46°33'37" E 296.00'

CUT IN CONCRETE FOUND



LEGEND

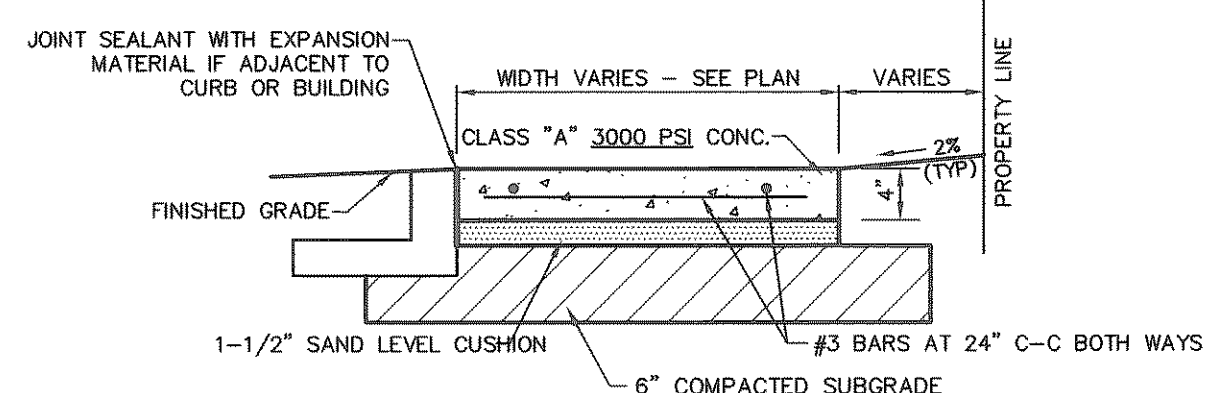
- B. BOLLARD
- EM ⊙ ELECTRIC METER
- PP ⊙ POWER POLE
- LS ⊙ LIGHT STANDARD
- WM ⊙ WATER METER
- WV ⊙ WATER VALVE
- ICV ⊙ IRRIGATION CONTROL VALVE
- FH ⊙ FIRE HYDRANT
- CO ⊙ CLEANOUT
- MH ⊙ MANHOLE
- TSC ⊙ TRAFFIC SIGNAL CONTROL
- TSP ⊙ TRAFFIC SIGNAL POLE
- TELE ⊙ TELEPHONE BOX
- FL ⊙ FLOOD LIGHT
- FP ⊙ FLAG POLE
- SIGN ⊙ TRAFFIC SIGN
- IRS ⊙ 1/2-INCH IRON ROD W/ PACHECO KOCH® CAP SET
- (C.M.) CONTROLLING MONUMENT
- PROPERTY LINE
- - - FENCE
- - - FIRE LANE
- 6" REINFORCED CONCRETE PAVEMENT, 6 SACK MINIMUM FOR MACHINE PLACED, 6.5 SACK MINIMUM FOR HAND PLACED, (CLASS "C", 3600 PSI)
- 4" REINFORCED CONCRETE, 5 SACK MINIMUM, (CLASS "A", 3000 PSI)
- 7" REINFORCED CONCRETE PAVEMENT, 6.5 SACK MINIMUM FOR MACHINE PLACED, 6.5 SACK MINIMUM FOR HAND PLACED, (CLASS "C", 3600 PSI)



N 35°12'58" E 202.08'
(BEARING BASIS)

NOTE: CONTRACTOR TO USE THE CITY STANDARDS OR NORTH CENTRAL TEXAS COUNCIL OF GOVERNMENTS (NCTCOG), THIRD EDITION, FOR PAVING DETAILS.

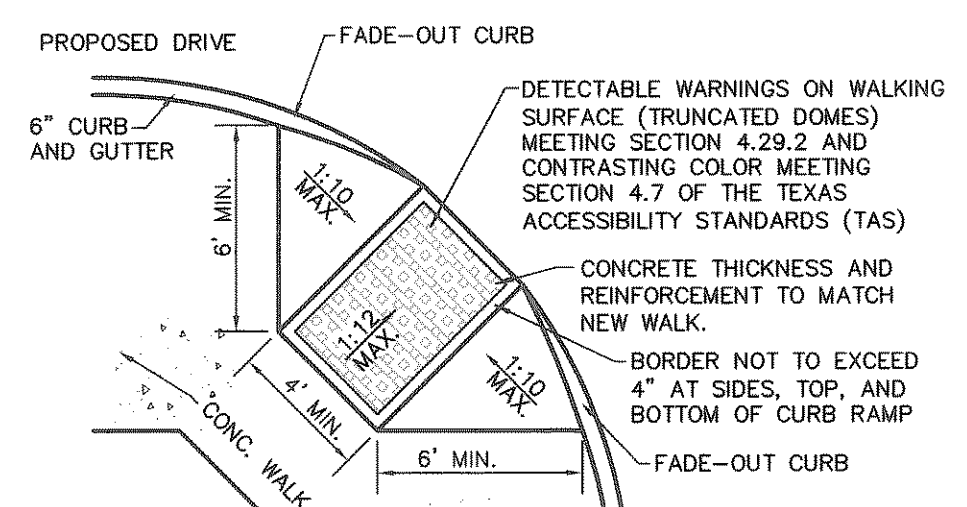
NOTE: CONTRACTOR TO COORDINATE WITH GEOTECHNICAL ENGINEER TO OBTAIN ACTUAL PAVEMENT DESIGN. PAVEMENT SECTIONS SHOWN ARE FOR REFERENCE ONLY.



PROVIDE BITUMINOUS EXPANSION MATERIAL WHERE WALK ABUTS EXISTING IMPROVEMENTS AND AT ALL CHANGES IN GRADE

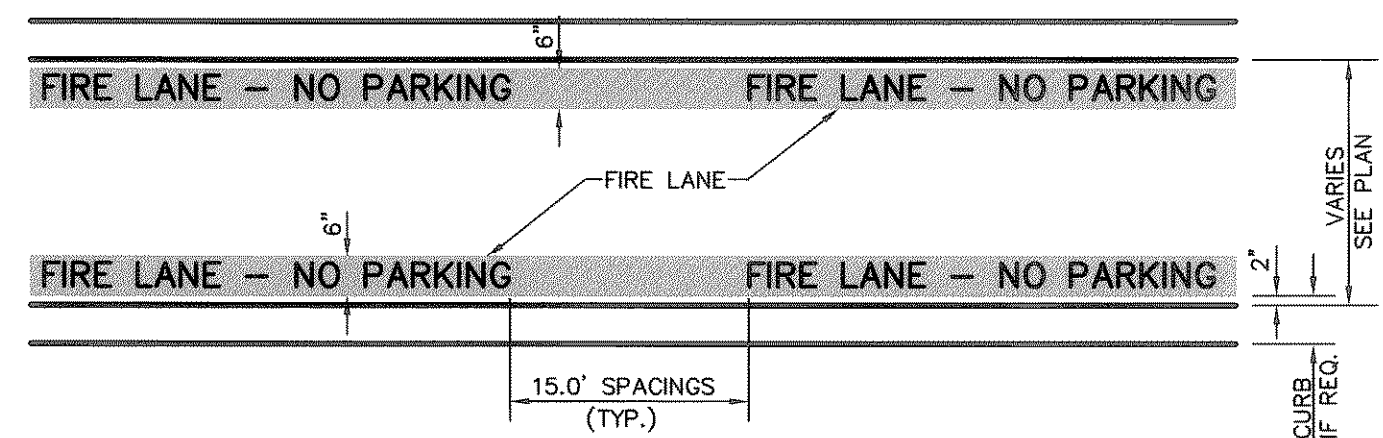
PROVIDE TOOLED JOINTS AT SPACING EQUAL TO WIDTH. PROVIDE REDWOOD EXPANSION JOINTS AT 32' SPACING UNLESS NOTED DIFFERENTLY ON ARCHITECTURAL OR LANDSCAPE PLANS

3 CONCRETE WALK PRIVATE
NOT TO SCALE



NOTES:
1. MAXIMUM SLOPE FOR ALL PATHS 5%, MAX CROSS FALL IS 2%, FOR THE FIRST FIVE FEET FROM THE DOOR A 2% SLOPE (MAX) MUST BE MAINTAINED.
2. SIGNAGE AND MARKINGS TO BE IN ACCORDANCE WITH FEDERAL, STATE AND LOCAL REGULATIONS.

5 CORNER CURB RAMP
NOT TO SCALE

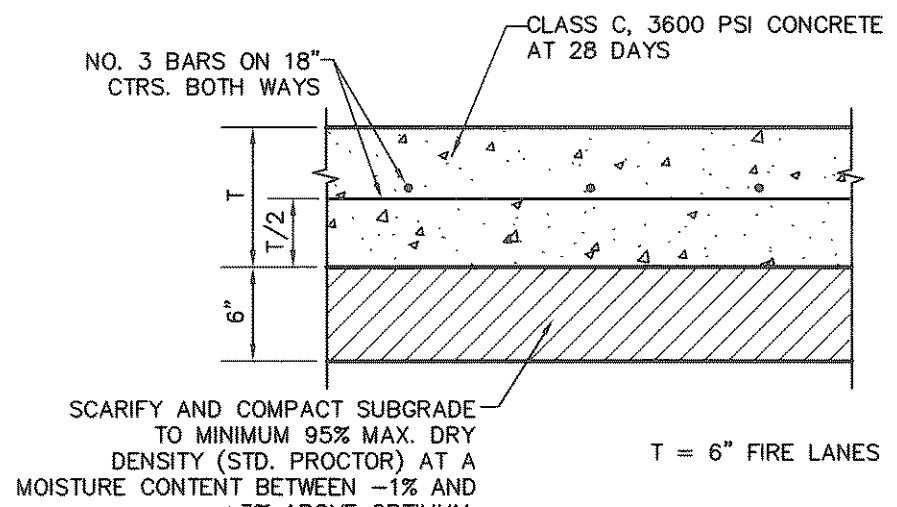


GENERAL NOTE:
A. STRIPING TO BE DONE IN ACCORDANCE WITH CITY STANDARDS.

STRIPING DETAIL NOTE:
A. PAINT:
1. STRIPE SHALL BE SIX (6) INCHES WIDE PAINTED WITH AN EXTERIOR ACRYLIC LATEX PAINT.
A. COLOR SHALL BE "TRAFFIC RED" GLIDDEN NO. 63251 OR EQUAL. LETTERS SHALL BE FOUR (4) INCHES HIGH PAINTED WITH AN EXTERIOR ACRYLIC LATEX PAINT.
B. COLOR SHALL BE "TRAFFIC WHITE" GLIDDEN NO. 563245 OR EQUAL.

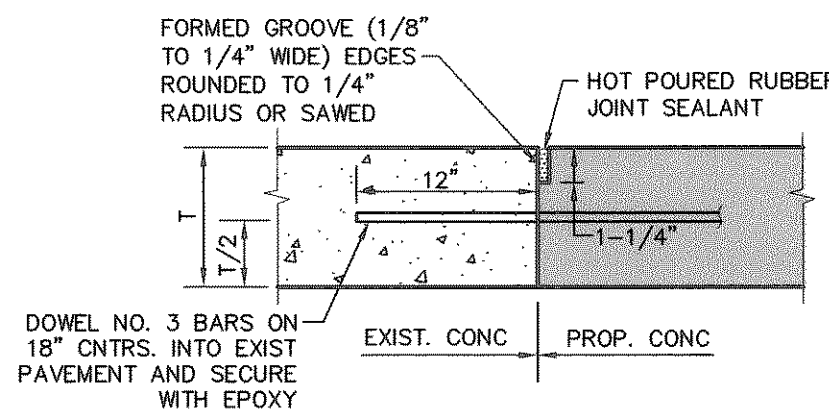
B. APPLICATION:
1. STRIPE MAY BE BRUSHED OR SPRAYED, ONE COAT TO FINISH.
2. LETTERS SHALL BE STENCIL FORMED, BRUSH APPLIED AND SPACED AS DETAILED ON THIS SHEET.

1 FIRE LANE STRIPING
NOT TO SCALE



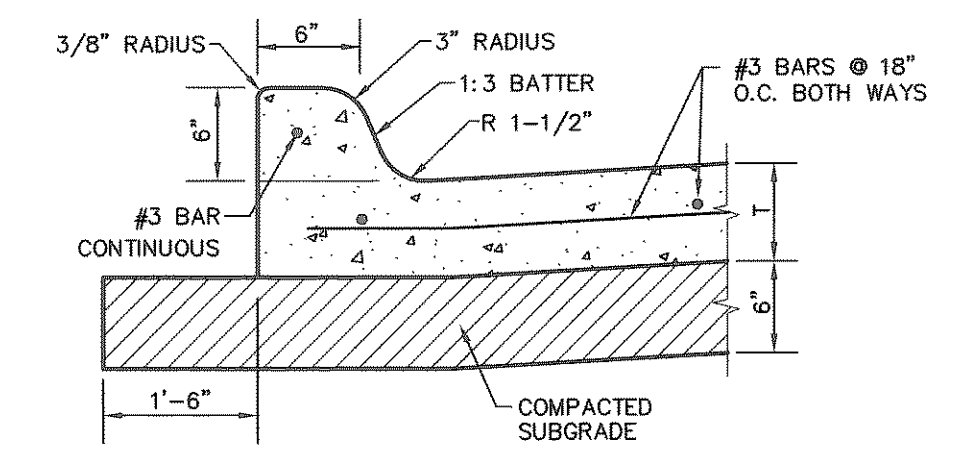
NOTE: REFER TO GEOTECH REPORT FOR FURTHER INFORMATION.

2 CONCRETE PAVEMENT SECTION
NOT TO SCALE



NOTE: REFER TO GEOTECH REPORT FOR FURTHER INFORMATION.

4 PAVEMENT CONNECTION
NOT TO SCALE



6 INTEGRAL CURB
NOT TO SCALE

RECORD DRAWING

THIS DRAWING HAS BEEN REVISED TO REFLECT CONSTRUCTION RECORDS MAINTAINED AND PROVIDED BY THE CONTRACTOR FOR THIS PROJECT, VISUAL REVIEW, AND SURVEY WORK CONDUCTED AT THE SITE.

CONTRACTOR: VISTA GENERAL CONTRACTORS, INC.
DATE REVISED: 03/03/2010



NO.	DATE	REVISION

Pacheco Koch 8350 N. CENTRAL EXPWY, SUITE 1000 DALLAS, TX 75206 972.235.3031 TX REG. ENGINEERING FIRM F-469 DALLAS • FORT WORTH • HOUSTON TX REG. SURVEYING FIRM LS-100080-00

PAVING PLAN & DETAILS
MI COCINA REDEVELOPMENT
ROCKWALL CROSSING
971 INTERSTATE HIGHWAY 30
CITY OF ROCKWALL, ROCKWALL COUNTY, TEXAS

DESIGN	DRAWN	DATE	SCALE	NOTES	FILE	NO.
CPM	AGG	AUG 2010	1"=20'			C5.1

MCCLUSKEY
03/08/2010 9:05AM
M:\DWG-31\3131-10.225P.DWG (3131-10.225P.DWG)