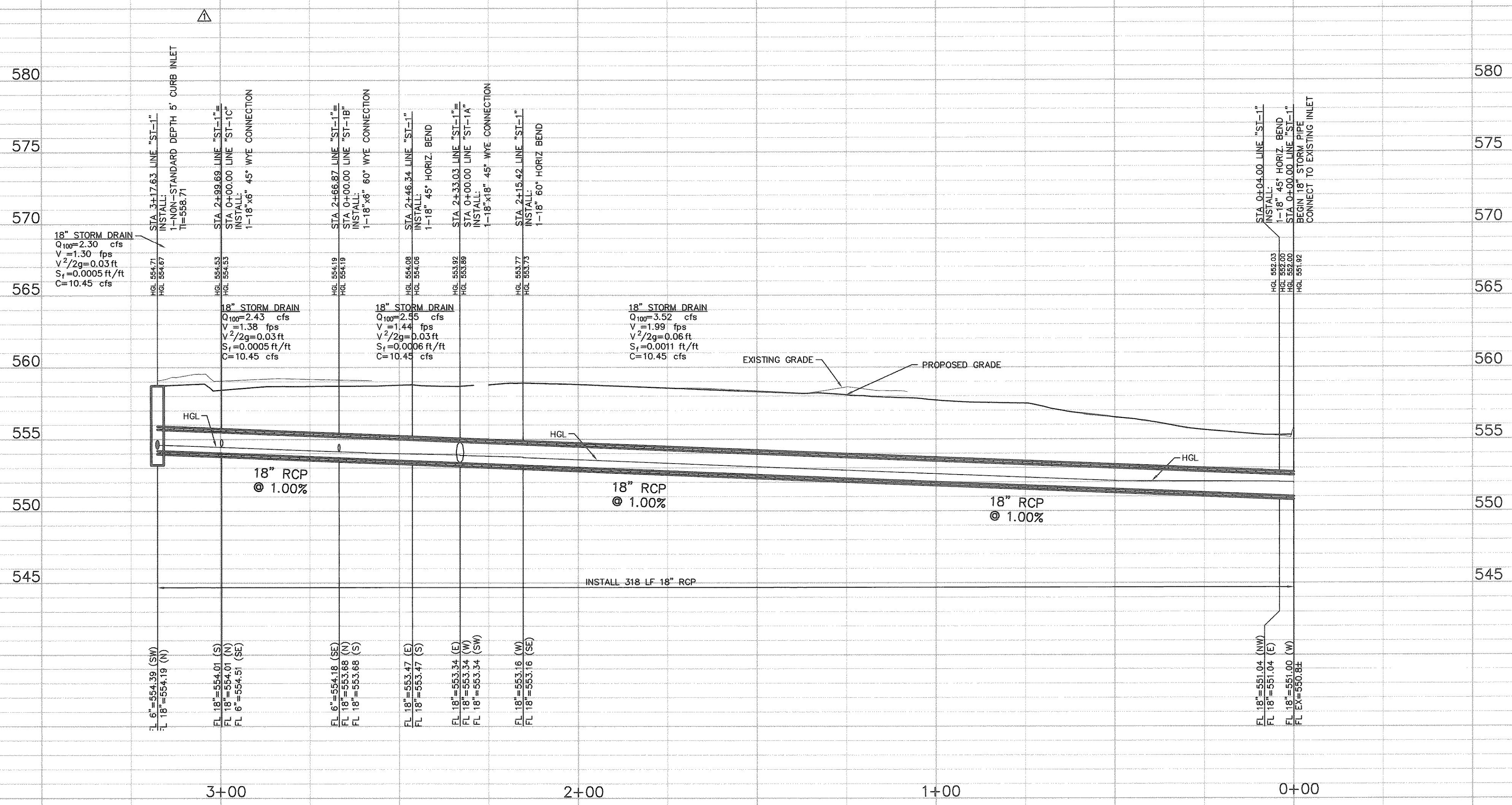
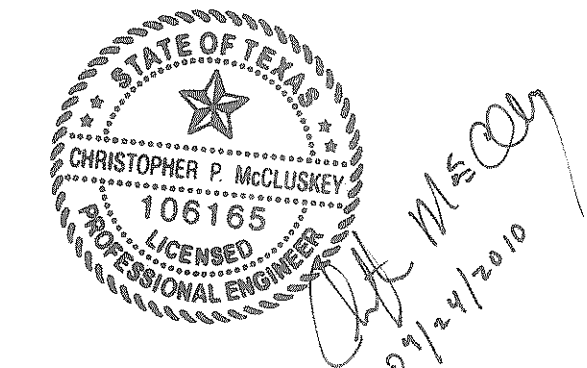


C:\PROJECTS\03\08\2011 - 7:31AM  
 M:\DWG-31\3131-10.225\DWG\C30\3131-10.225ST.DWG



**RECORD DRAWING**  
 THIS DRAWING HAS BEEN REVISED TO REFLECT CONSTRUCTION RECORDS MAINTAINED AND PROVIDED BY THE CONTRACTOR FOR THIS PROJECT. VISUAL REVIEW, AND SURVEY WORK CONDUCTED AT THE SITE.  
 CONTRACTOR: VISTA GENERAL CONTRACTORS, INC.  
 DATE REVISED: 03/03/2010 JGK



**BENCH MARK LIST**  
 CITY BM CITY OF ROCKWALL CONTROL MONUMENT RESET #1, BEING A BRASS DISK FOUND NORTH OF THE NORTHWEST CORNER OF A PARKING LOT AT THE SOUTHWEST CORNER OF THE INTERSECTION OF SUMMER LEE DRIVE AND RIDGE ROAD (F.M. 740).  
 ELEV=567.70  
 BM# 2 \* \* CUT SET AT THE SOUTHEAST CORNER OF A CONCRETE CURB INLET AT THE NORTHEAST CORNER OF PARKING LOT OF 971 INTERSTATE HIGHWAY 30.  
 ELEV=555.89

NO.	DATE	REVISION
1	09/28/2010	REVISED GRADING
<b>STORM SEWER PROFILE</b>		
<b>MI COCINA REDEVELOPMENT</b>		
<b>ROCKWALL CROSSING</b>		
<b>971 INTERSTATE HIGHWAY 30</b>		
<b>CITY OF ROCKWALL, ROCKWALL COUNTY, TEXAS</b>		
DESIGN	DRAWN	DATE
CPM	AGG	AUG 2010
SCALE	NOTES	FILE
H: 1"=20' V: 1"=5'		
NO.		<b>C4.3</b>

MI COCINA REDEVELOPMENT