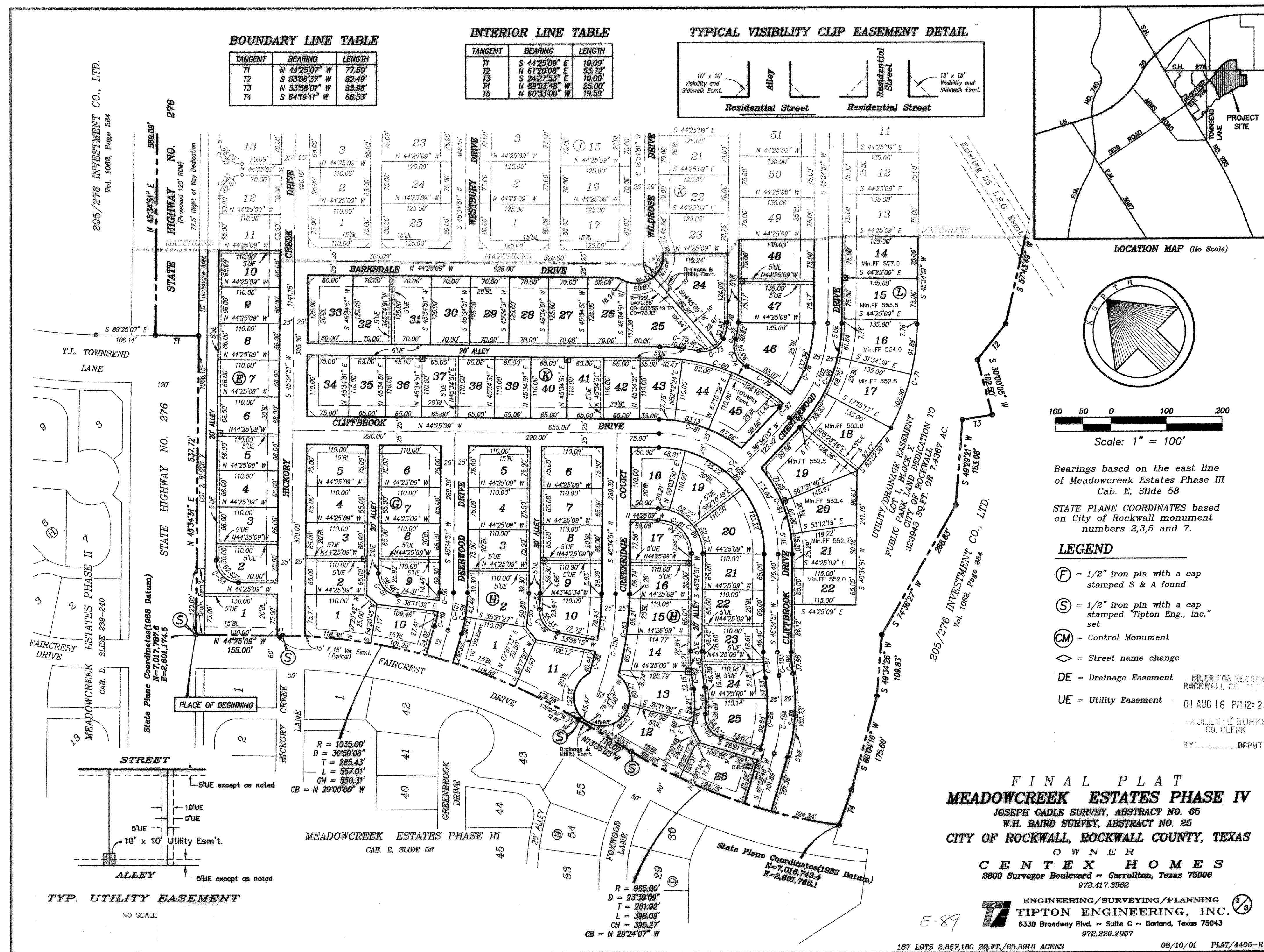


E:\Plats\4405-R.dwg Fri Aug 10 14:24:51 2001 GM

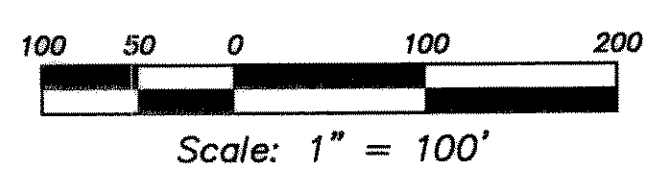
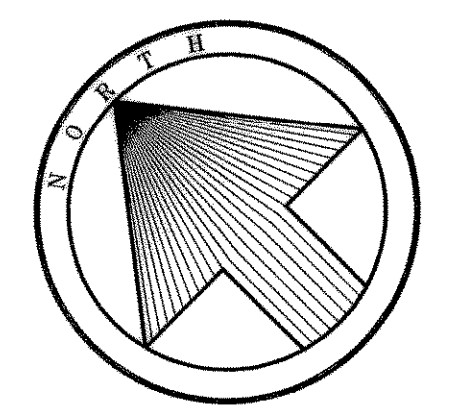
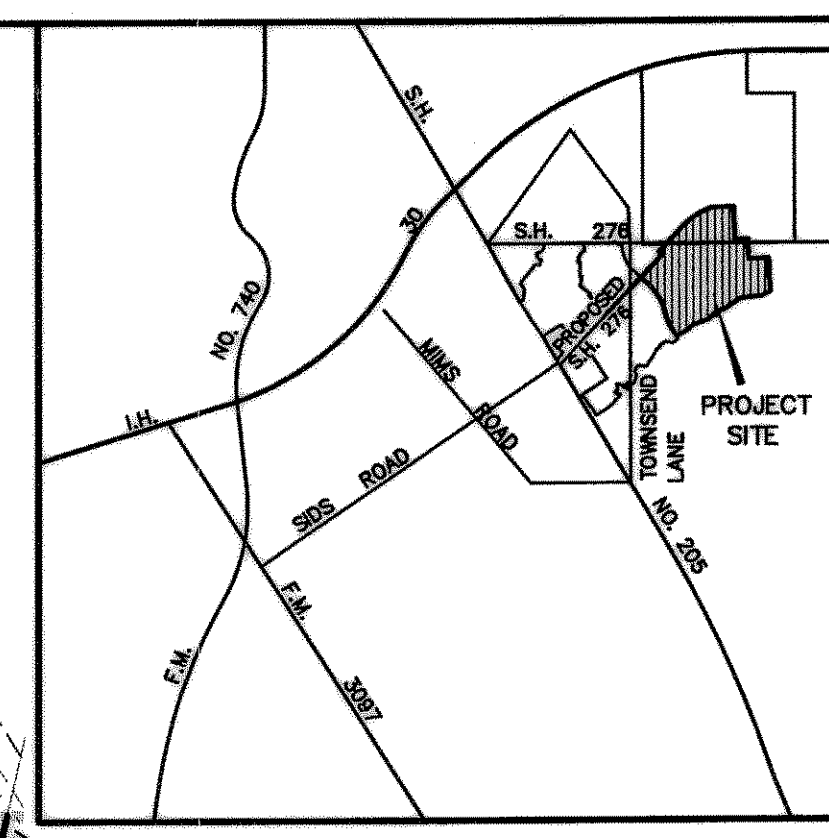
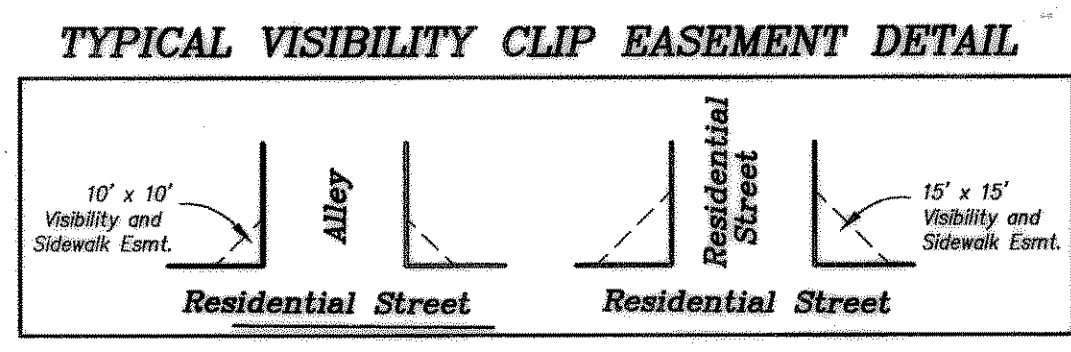


BOUNDARY LINE TABLE

TANGENT	BEARING	LENGTH
T1	N 44°25'07" W	77.50'
T2	S 83°06'57" W	82.49'
T3	N 53°58'01" W	53.98'
T4	S 64°19'11" W	66.53'

INTERIOR LINE TABLE

TANGENT	BEARING	LENGTH
T1	S 44°25'09" W	10.00'
T2	N 67°20'09" W	53.72'
T3	S 24°23'53" W	10.00'
T4	N 89°53'48" W	25.00'
T5	N 60°33'00" W	19.59'



Bearings based on the east line of Meadowcreek Estates Phase III Cab. E, Slide 58
 STATE PLANE COORDINATES based on City of Rockwall monument numbers 2,3,5 and 7.

- LEGEND**
- (F) = 1/2" iron pin with a cap stamped 'S' & A found
 - (S) = 1/2" iron pin with a cap stamped 'Tipton Eng., Inc.' set
 - (CM) = Control Monument
 - ◇ = Street name change
 - DE = Drainage Easement
 - UE = Utility Easement

FINAL PLAT
MEADOWCREEK ESTATES PHASE IV
 JOSEPH CADLE SURVEY, ABSTRACT NO. 65
 W.H. BAIRD SURVEY, ABSTRACT NO. 25
 CITY OF ROCKWALL, ROCKWALL COUNTY, TEXAS
 OWNER
CENTERX HOMES
 2800 Century Boulevard ~ Carrollton, Texas 75006
 972.417.3562

TIPTON ENGINEERING, INC.
 6330 Broadway Blvd. ~ Suite C ~ Garland, Texas 75043
 972.226.2967