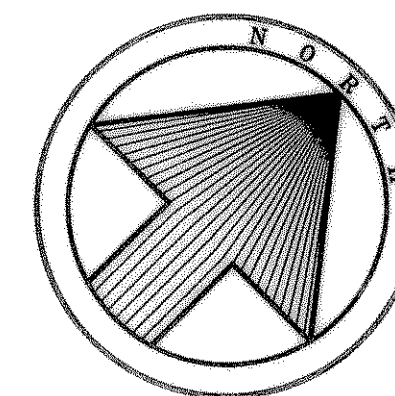
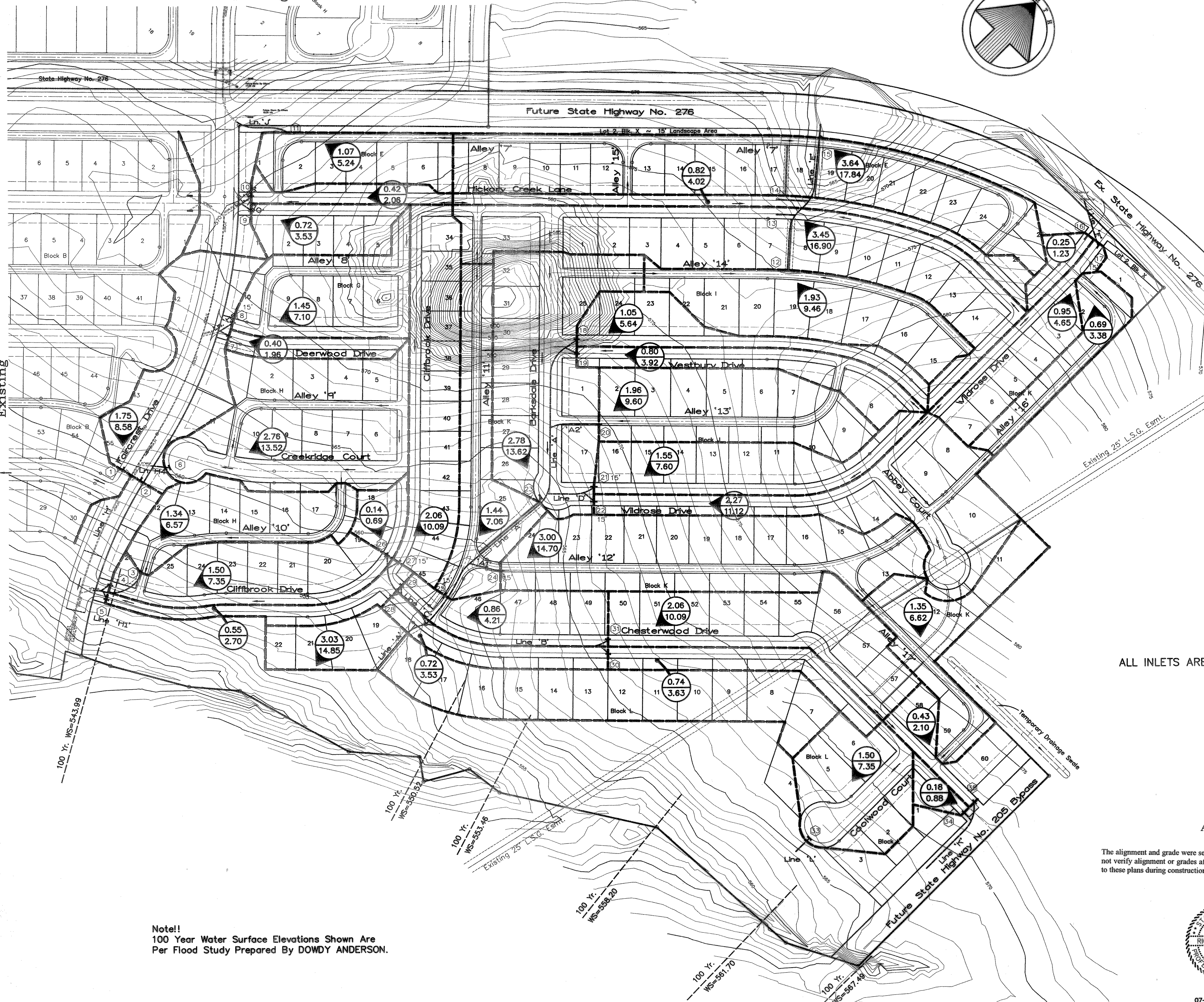


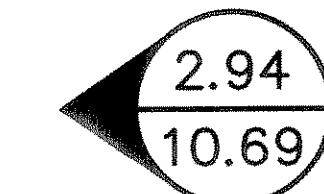
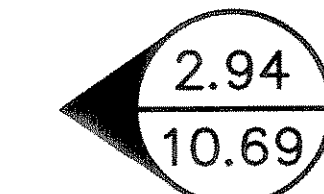

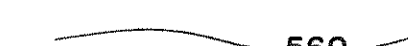

MEADOWCREEK ESTATES PHASE I & II
Existing



MEADOWCREEK ESTATES PHASE III
Existing



Legend

-  = Acreage
-  = Q₁₀₀
-  = Drainage Area Divide
-  = Existing Contours
-  = Direction Of Flow

Subdivision

$C = 0.50$ $I_{100} = 9.80$ $T_c = 10 \text{ min}$

① ~ Denotes Inlet Numbers

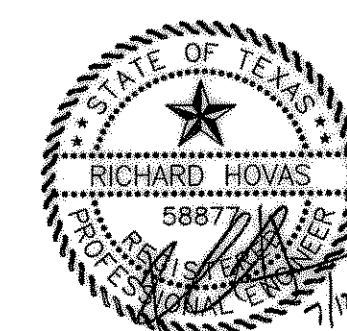
ALL INLETS ARE MINIMUM 10 FT. UNLESS NOTED OTHERWISE.

Bench Mark 1
A Standard U.S.C.&G.S. Disk Stamped 'M 929 1946'
Approx. 1.9 miles southeast along State Hwy. 205
from Courthouse at Rockwall to bridge at Buffalo
Creek, at the northwest corner of the concrete
bridge in the top of the concrete guardrail base
approx. 17 feet southwest of the centerline of the
highway, and approx. 3 feet southeast of the northwest
end of the guardrail base.
Elevation = 524.65
Bench Mark 2
Top of Concrete ROW Marker, approx. 1.6 miles
southeast along State Hwy. 205 and then approx.
0.6 miles east along FM 276 to intersection of
paved road, at fence corner at southwest quadrant
of intersection.
Elevation = 543.10

AS BUILT PLANS
03/28/2002

The alignment and grade were set on the ground for construction per the plans. The engineer did not verify alignment or grades after construction. We are not aware of any changes or revisions to these plans during construction except as noted.

Note!!
100 Year Water Surface Elevations Shown Are
Per Flood Study Prepared By DOWDY ANDERSON.



DRAINAGE AREA MAP

MEADOWCREEK ESTATES PHASE IV

City Of Rockwall, Texas

TIPTON ENGINEERING, INC.

6330 Broadway Blvd. ~ Suite C ~ Garland, Texas 75043

DESIGN	DRAWN	DATE	SCALE	NOTES	FILE	NO.
T.E. Inc.	T.E. Inc.	1-2001	1"=100'		4405	21