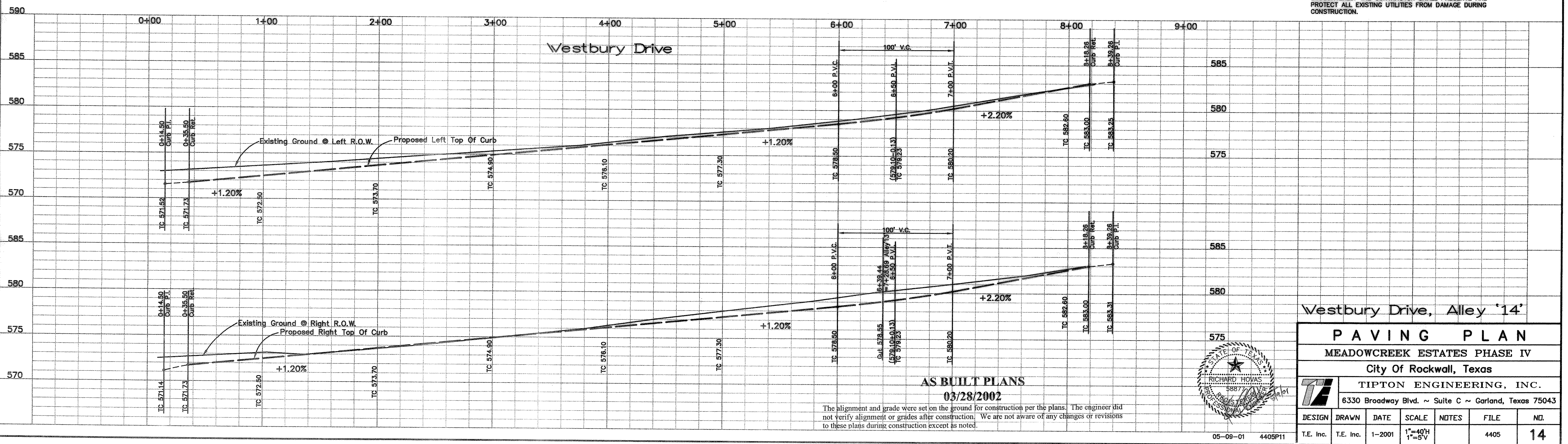


Bench Mark 1
A Standard U.S.C.&G.S. Disk Stamped 'M 929 1946'
Approx. 1.9 miles southeast along State Hwy. 205
from Courthouse at Rockwall to bridge at Buffalo
Creek, at the northwest corner of the concrete
bridge in the top of the concrete guardrail base
approx. 17 feet southwest of the centerline of the
highway, and approx. 3 feet southeast of the northwest
end of the guardrail base.
Elevation = 524.65
Bench Mark 2
Top of Concrete ROW Marker, approx. 1.6 miles
southeast along State Hwy. 205 and then approx.
0.6 miles east along FM 276 to intersection of
paved road, at fence corner at southwest quadrant
of intersection.
Elevation = 543.10

CAUTION !!!
EXISTING UTILITIES

EXISTING UTILITIES AND UNDERGROUND FACILITIES INDICATED
ON THESE PLANS HAVE BEEN LOCATED FROM REFERENCE
INFORMATION. IT SHALL BE THE RESPONSIBILITY OF THE
CONTRACTOR TO VERIFY BOTH HORIZONTALLY AND VERTICALLY
THE LOCATION OF ALL EXISTING UTILITIES AND UNDERGROUND
FACILITIES PRIOR TO CONSTRUCTION, TO TAKE NECESSARY
PRECAUTIONS IN ORDER TO PROTECT ALL FACILITIES
ENCOUNTERED. THE CONTRACTOR SHALL PRESERVE AND
PROTECT ALL EXISTING UTILITIES FROM DAMAGE DURING
CONSTRUCTION.

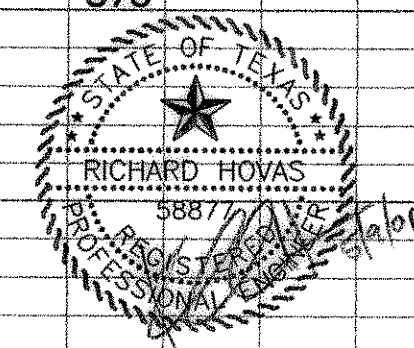
Note!
Construct Barrier Free Ramps
With Street & Alley Paving At All
Intersections As Per City Standards.



Westbury Drive, Alley '14'

PAVING PLAN
MEADOWCREEK ESTATES PHASE IV
City Of Rockwall, Texas

TIPTON ENGINEERING, INC.
6330 Broadway Blvd. ~ Suite C ~ Garland, Texas 75043



AS BUILT PLANS
03/28/2002

The alignment and grade were set on the ground for construction per the plans. The engineer did not verify alignment or grades after construction. We are not aware of any changes or revisions to these plans during construction except as noted.

DESIGN	DRAWN	DATE	SCALE	NOTES	FILE	NO.
T.E. Inc.	T.E. Inc.	1-2001	1"=40'H 1"=5'V		4405	14