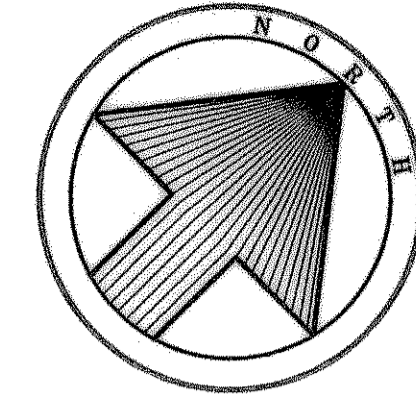
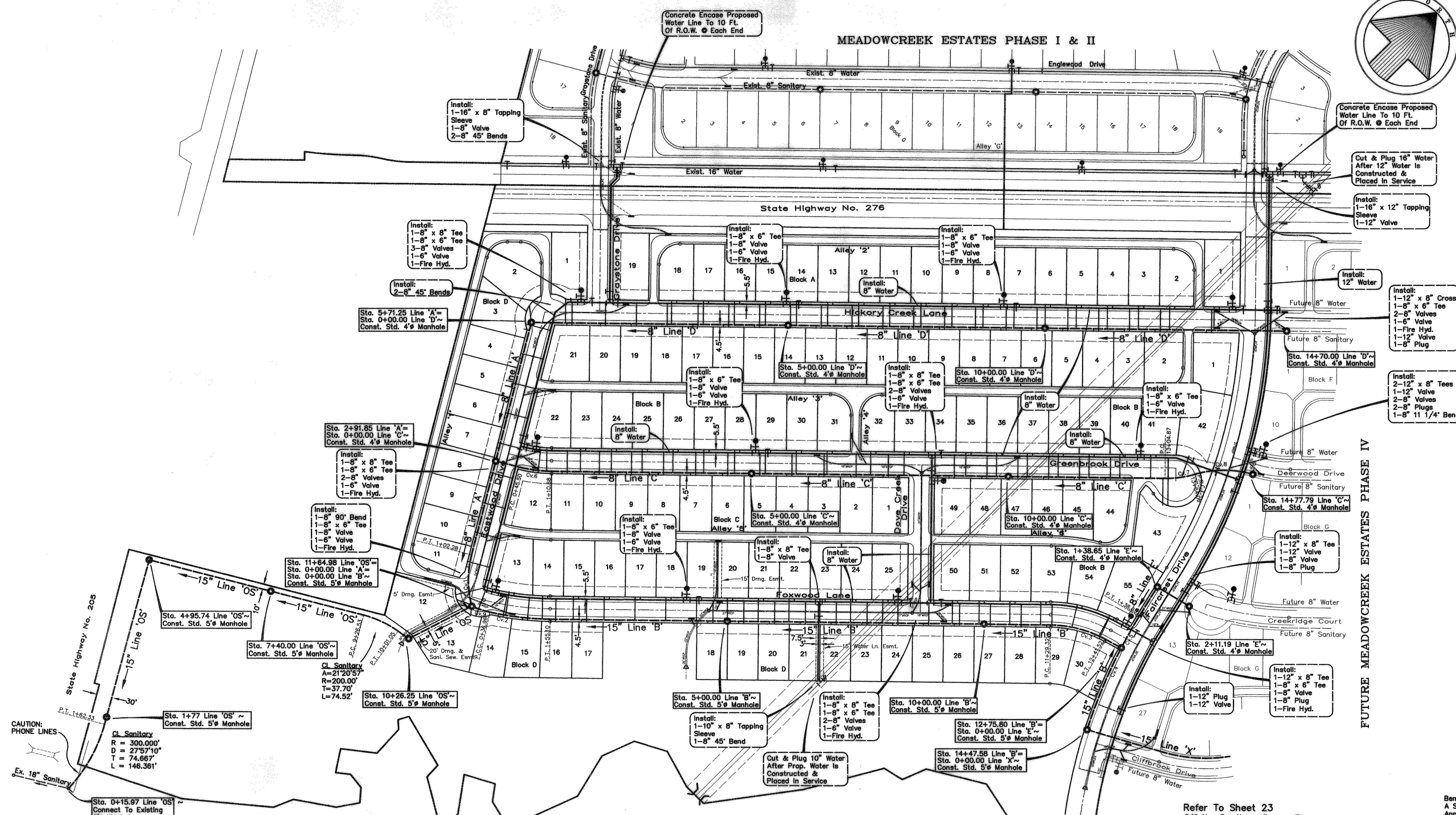


MEADOWCREEK ESTATES PHASE I & II

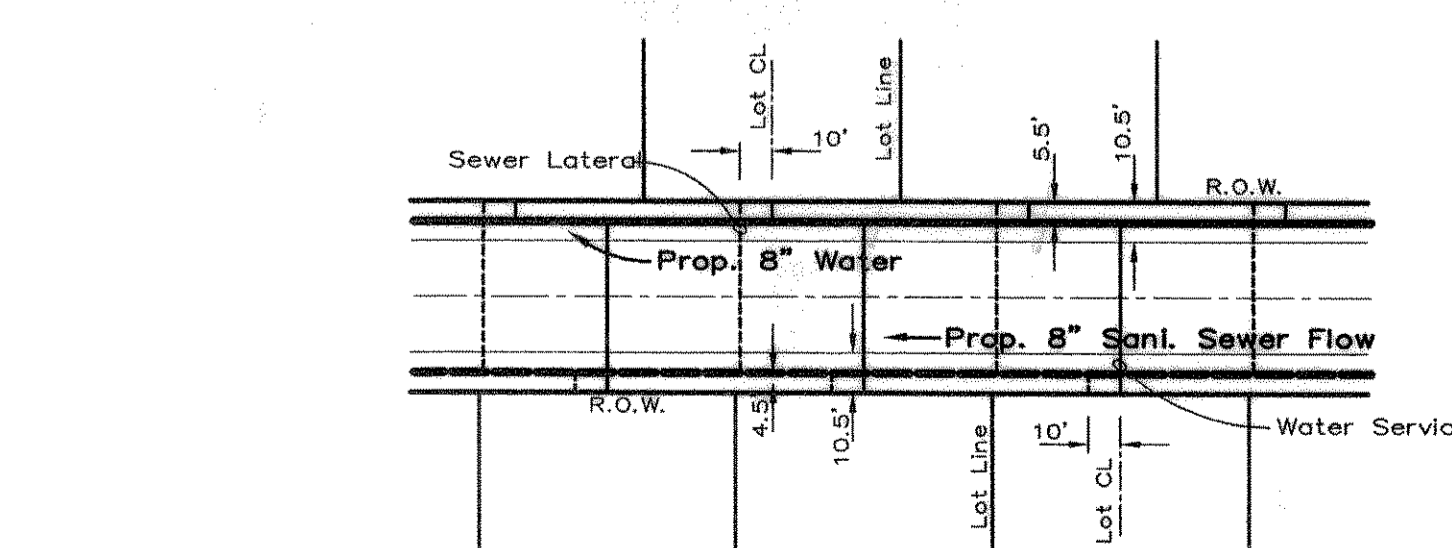


CAUTION !!!
EXISTING UTILITIES

EXISTING UTILITIES AND UNDERGROUND FACILITIES INDICATED ON THESE PLANS HAVE BEEN LOCATED FROM REFERENCE INFORMATION. IT SHALL BE THE RESPONSIBILITY OF THE CONTRACTOR TO VERIFY BOTH HORIZONTALLY AND VERTICALLY THE LOCATION OF ALL EXISTING UTILITIES AND UNDERGROUND FACILITIES PRIOR TO CONSTRUCTION, TO TAKE NECESSARY PRECAUTIONS IN ORDER TO PROTECT ALL FACILITIES ENCOUNTERED. THE CONTRACTOR SHALL PRESERVE AND PROTECT ALL EXISTING UTILITIES FROM DAMAGE DURING CONSTRUCTION.



18" Sanitary Sewer Per Plans Prepared By Dauphrate & Associates, Inc. 2231 Ridge Road, Suite 200 Rockwall, Texas 75067



Typical Lot Service Detail

GENERAL NOTES

- All water lines shall be PVC Class 200 DR 14. C-905 pipe for water lines larger than 12".
- All water lines to have 42" minimum cover below approved street grades as required to clear other utilities.
- All water services to be 1" polyethylene 200 PSI SDR located in the center of lot with cut-offs 3' - 5' behind curb.
- All sanitary sewer laterals shall be 4" and located 10' downstream of water service, unless otherwise shown on plans.
- All water mains shall pass a four (4) hour 200 psi pressure test in accordance with the City of Rockwall Specifications. Test to be made by the Contractor.
- The Contractor shall record the location of all water and sewer services relative to lot corners. He shall also record any additions, deletions, or revisions to the plans which take place in the field. This information is to be furnished to the Engineer immediately after installation for the purpose of preparing "as-built" plans.
- Meter boxes will be supplied & installed by the Contractor.
- The Contractor shall be responsible for coordinating line and grade for all water, sanitary sewer, and storm sewer and appurtenances. The Engineer shall furnish this information upon request.
- Plastic tape for utility to be attached to the end of all water and sewer service lines, and extended above ground level. The tape shall meet the following specifications.
 - "Allen Marking Tape" or equal
 - Tape marked continuously "Caution - Water Line" or "Caution - Sewer Line"
 - Six (6) inches in width
 - Red tape for sewer services
 - Blue tape for water services
- All existing underground facilities, such as existing water lines, sanitary sewer lines, gas lines, storm sewer lines, telephone conduits, electrical conduits, etc., that might conflict with our proposed underground facilities must be uncovered and the location verified with the Contractor prior to any underground construction for this project. The Engineer shall assist the Contractor in determining locations and elevations of these existing underground facilities.
- Ductile iron pipe shall be used at all utility crossings, 10 feet on each side.
- Where ductile iron pipe is used at utility crossings, pipe shall be Class 51 with Polywrap.

SANITARY SEWER CURVE DATA

Curve 1	Curve 2	Curve 3
A=2918'04"	A=1204'34"	A=2800'45"
R=200.00'	R=560.50'	R=229.50'
T=52.28'	T=59.29'	T=57.25'
L=102.28'	L=118.14'	L=112.20'
Curve 4	Curve 5	Curve 6
A=09'38.41"	A=03'58'25"	A=13'48'23"
R=1020.50'	R=1020.50'	R=270.50'
T=86.09'	T=35.40'	T=32.75'
L=171.78'	L=70.77'	L=65.18'
Curve 7	Curve 8	Curve 9
A=16'57'21"	A=32'34'33"	A=10'35'18"
R=200.00'	R=200.00'	R=200.00'
T=29.81'	T=58.45'	T=18.53'
L=59.19'	L=113.73'	L=36.96'

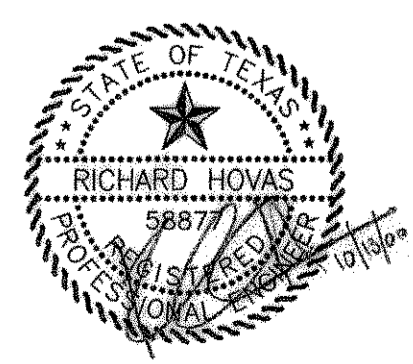
Refer To Sheet 23
Offsite Sanitary Sewer Plan
For 15" Line 'X'

Bench Mark 1
A Standard U.S.C.&G.S. Disk Stamped 'M 929 1946'
Approx. 1.9 miles southeast along State Hwy. 205 from Courthouse at Rockwall to bridge at Buffalo Creek, at the northwest corner of the concrete bridge in the top of the concrete guardrail base approx. 17 feet southwest of the centerline of the highway, and approx. 3 feet southeast of the northwest end of the guardrail base.
Elevation = 524.65

Bench Mark 2
Top of Concrete ROW Marker, approx. 1.6 miles southeast along State Hwy. 205 and then approx. 0.6 miles east along FM 276 to intersection of paved road, at fence corner at southwest quadrant of intersection.
Elevation = 543.10

AS BUILT PLANS
06/08/2001

The alignment and grade were set on the ground for construction per the plans. The engineer did not verify alignment or grades after construction. We are not aware of any changes or revisions to these plans during construction except as noted.



Water & Sanitary Sewer Plan						
MEADOWCREEK ESTATES PHASE III						
City Of Rockwall, Texas						
TIPTON ENGINEERING, INC.						
6330 Broadway Blvd. ~ Suite C ~ Garland, Texas 75043						
DESIGN	DRAWN	DATE	SCALE	NOTES	FILE	NO.
T.E. Inc.	T.E. Inc.	4-2000	1"=100'		4404	19