

Pavement Sta. 9+92 ~
Construct Std. 10 Ft.
Curb Inlet
TC=561.82, FL=557.82

0+55.00 Alley Sta. ~ Construct
10' Curb Inlet w/10' Of Curb On
Each Side Of Inlet, Inv.=559.50
TC=560.18, Lip=559.35, FL=555.68
Warp Invert To Drain Into Inlet

4+46.00 Alley Sta. ~ Construct
10' Curb Inlet w/10' Of Curb On
Each Side Of Inlet, Inv.=552.57
TC=553.25, Lip=552.42, FL=548.75
Warp Invert To Drain Into Inlet

Pavement Sta. 4+85 ~
Construct Std. 10 Ft.
Curb Inlet
TC=548.42, FL=544.42

Pavement Sta. 0+56 ~
Construct 2-Std. 10 Ft.
Curb Inlets
TC=553.43, FL=549.43

Pavement Sta. 9+30 ~
Construct Std. 10 Ft.
Curb Inlet
TC=552.72, FL=548.72

Pavement Sta. 4+30 ~
Construct Std. 10 Ft.
Curb Inlet
TC=548.15, FL=544.15

Sta. 3+96.00 Line 'D' ~
Sta. 0+00.00 Line 'E' ~
Construct Std. Storm
Sewer Manhole

Pavement Sta. 9+21 ~
Construct Std. 10 Ft.
Curb Inlet
TC=552.59, FL=548.59

Sta. 0+18.00 Line 'C' ~
Construct Std. Type 'B'
Headwall

Install 30' x 20' Grouted
Rock Rip-rap Blanket

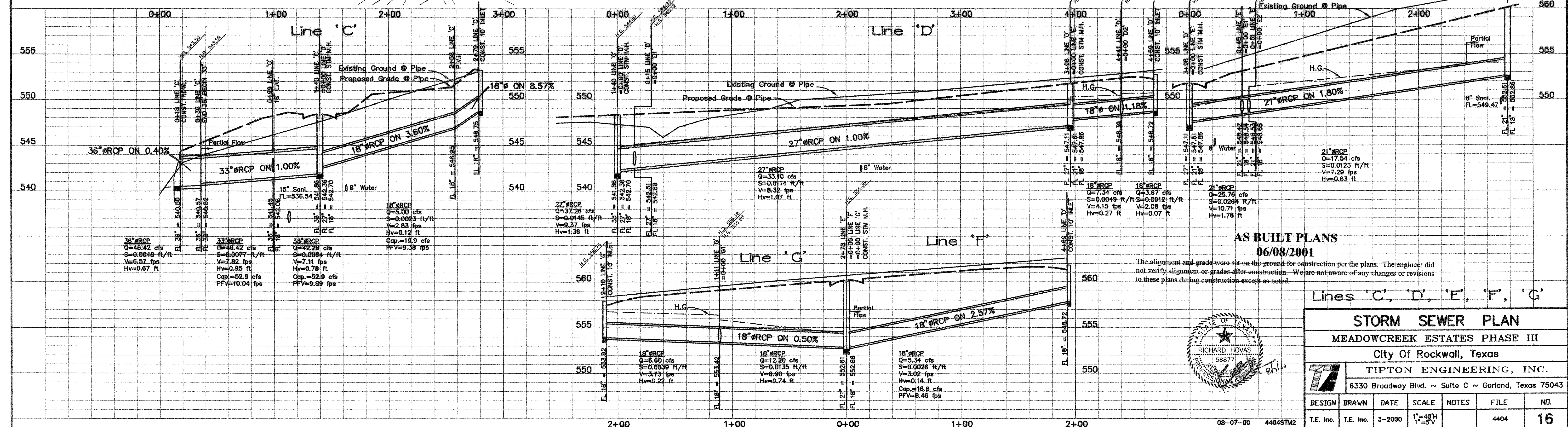
CONTRACTOR TO MEET WITH DESIGN
ENGINEER ON SITE TO DETERMINE
THE LOCATION OF STORM SEWER OUTFALL

CAUTION !!!
EXISTING UTILITIES

EXISTING UTILITIES AND UNDERGROUND FACILITIES INDICATED ON THESE PLANS HAVE BEEN LOCATED FROM REFERENCE INFORMATION. IT SHALL BE THE RESPONSIBILITY OF THE CONTRACTOR TO VERIFY BOTH HORIZONTALLY AND VERTICALLY THE LOCATION OF ALL EXISTING UTILITIES AND UNDERGROUND FACILITIES PRIOR TO CONSTRUCTION, TO TAKE NECESSARY PRECAUTIONS IN ORDER TO PROTECT ALL FACILITIES ENCOUNTERED. THE CONTRACTOR SHALL PRESERVE AND PROTECT ALL EXISTING UTILITIES FROM DAMAGE DURING CONSTRUCTION.

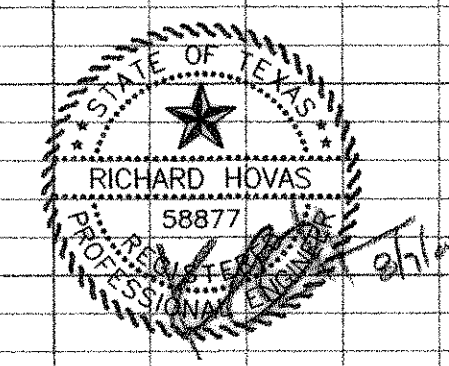
Bench Mark 1
A Standard U.S.C.&G.S. Disk Stamped 'M 929 1946'
Approx. 1.9 miles southeast along State Hwy. 205
from Courthouse at Rockwall to bridge at Buffalo
Creek, at the northwest corner of the concrete
bridge in the top of the concrete guardrail base
approx. 17 feet southwest of the centerline of the
highway, and approx. 3 feet southeast of the northwest
end of the guardrail base.
Elevation = 524.65

Bench Mark 2
Top of Concrete ROW Marker, approx. 1.6 miles
southeast along State Hwy. 205 and then approx.
0.6 miles east along FM 276 to intersection of
paved road, at fence corner at southwest quadrant
of intersection.
Elevation = 543.10



AS BUILT PLANS
06/08/2001

The alignment and grade were set on the ground for construction per the plans. The engineer did not verify alignment or grades after construction. We are not aware of any changes or revisions to these plans during construction except as noted.



Lines 'C', 'D', 'E', 'F', 'G'

STORM SEWER PLAN					
MEADOWCREEK ESTATES PHASE III					
City Of Rockwall, Texas					
TIPTON ENGINEERING, INC.					
6330 Broadway Blvd. ~ Suite C ~ Garland, Texas 75043					
DESIGN	DRAWN	DATE	SCALE	NOTES	FILE
T.E. Inc.	T.E. Inc.	3-2000	1"=40'H 1"=5'V		4404
					16