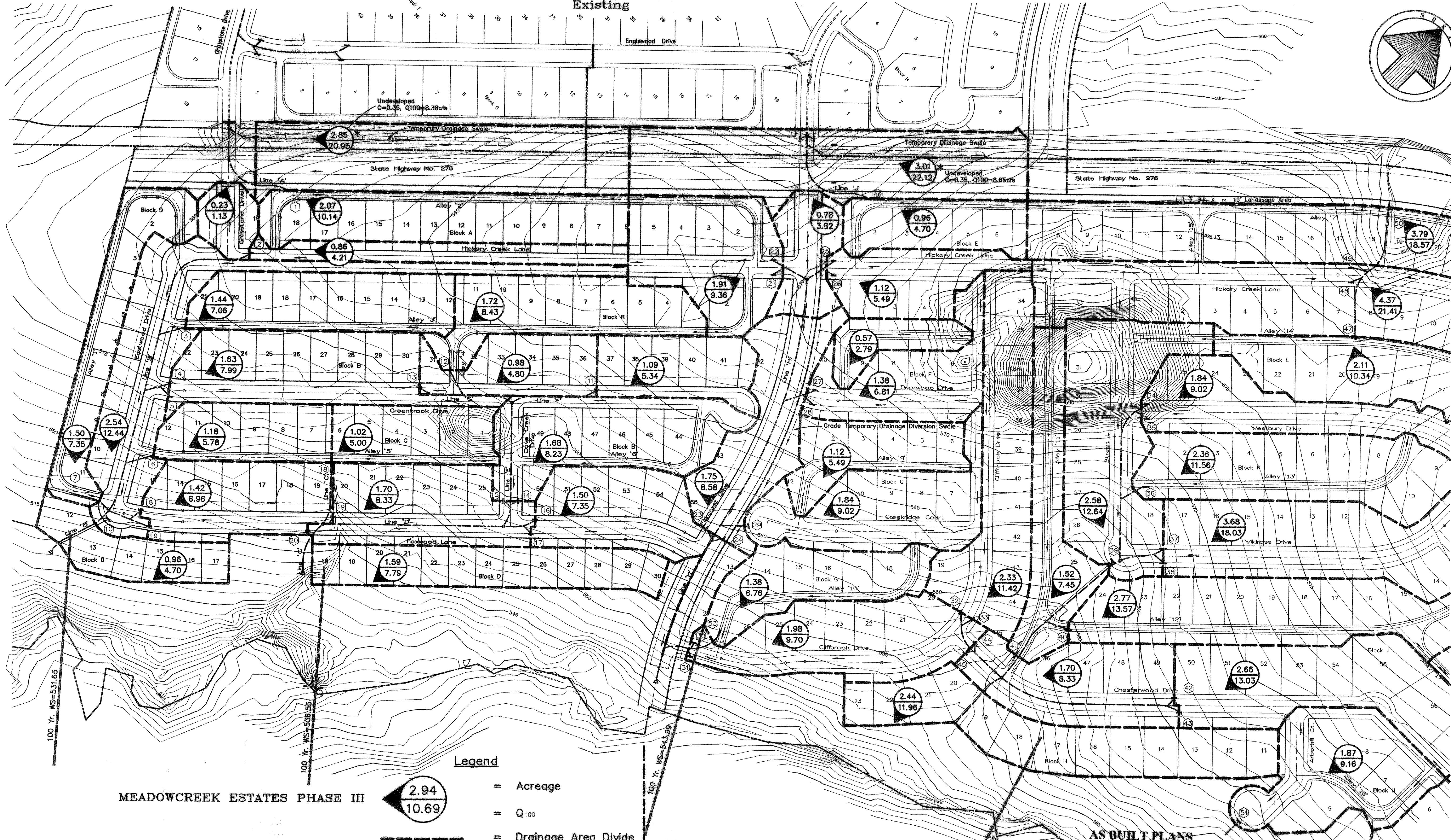
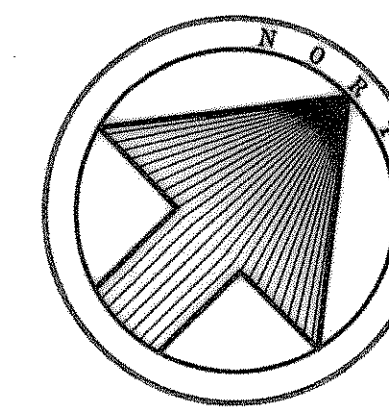


MEADOWCREEK ESTATES PHASE I & II
Existing



MEADOWCREEK ESTATES PHASE III

- Legend**
- = Acreage
 - = Q₁₀₀
 - = Drainage Area Divide
 - = Existing Contours
 - = Direction Of Flow

Subdivision

C = 0.50 I₁₀₀ = 9.80 T_c = 10 min
 * ~C = 0.75 I₁₀₀ = 9.80 T_c = 10 min
 (Weighed Runoff Coefficient-R.O.W. & Landscape Esmt.)

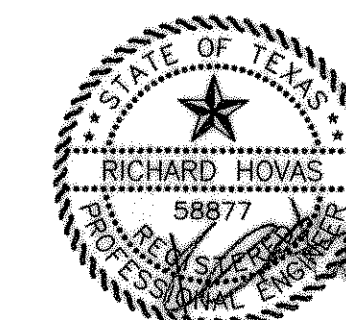
① ~ Denotes Inlet Numbers

MEADOWCREEK ESTATES PHASE IV
Future

AS BUILT PLANS
06/08/2001

The alignment and grade were set on the ground for construction per the plans. The engineer did not verify alignment or grades after construction. We are not aware of any changes or revisions to these plans during construction except as noted.

Bench Mark 1
 A Standard U.S.C.&G.S. Disk Stamped 'M 929 1946'
 Approx. 1.9 miles southeast along State Hwy. 205
 from Courthouse at Rockwall to bridge at Buffalo
 Creek, at the northwest corner of the concrete
 bridge in the top of the concrete guardrail base
 approx. 17 feet southwest of the centerline of the
 highway, and approx. 3 feet southeast of the northwest
 end of the guardrail base.
 Elevation = 524.65
 Bench Mark 2
 Top of Concrete ROW Marker, approx. 1.6 miles
 southeast along State Hwy. 205 and then approx.
 0.6 miles east along FM 276 to intersection of
 paved road, at fence corner at southwest quadrant
 of intersection.
 Elevation = 543.10



DRAINAGE AREA MAP						
MEADOWCREEK ESTATES PHASE III						
City Of Rockwall, Texas						
TIPTON ENGINEERING, INC.						
6330 Broadway Blvd. ~ Suite C ~ Garland, Texas 75043						
DESIGN	DRAWN	DATE	SCALE	NOTES	FILE	NO.
T.E. Inc.	T.E. Inc.	4-2000	1"=100'		4404	13

D:\ACTIVE\jobos\4400_Ser\105\4404\4404DA.dwg Tue Sep 12 13:26:19 2000 JF