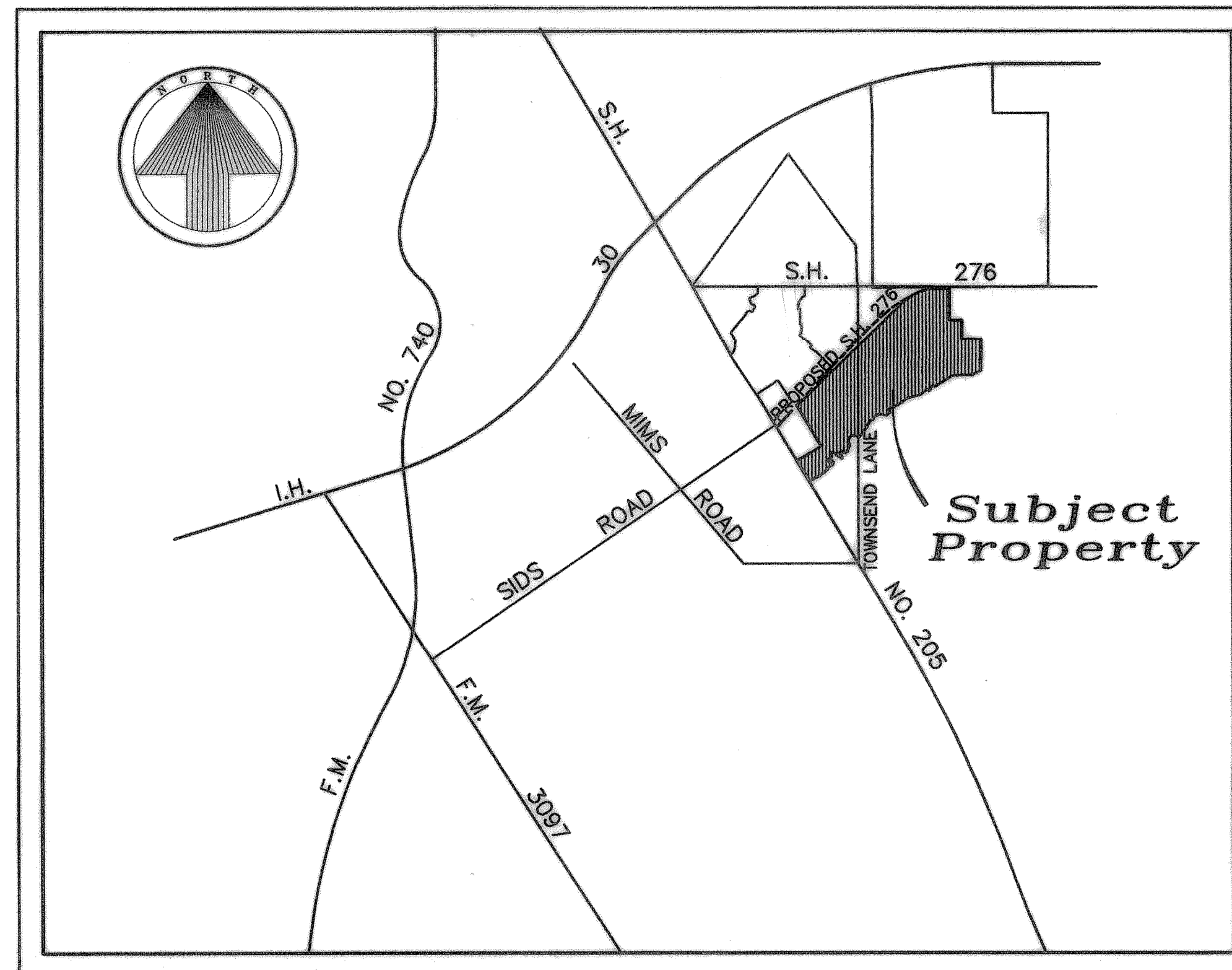


DEVELOPMENT PLANS FOR MEADOWCREEK ESTATES PHASE III

CITY OF ROCKWALL, TEXAS



LOCATION MAP
NOT TO SCALE

GENERAL NOTES

1. All street and alleys intersections and connections shall be built by the developer.
2. Excavation from streets to be deposited in low areas to allow proper drainage, except existing creek.
3. All existing ditches, except as noted on drainage plans, are to be filled to conform to surrounding terrain.
4. It will be the responsibility of the developer and/ or the contractor to protect and maintain to proper line and grade all public utilities, manholes, cleanouts, valve boxes, fire hydrants, etc. during the construction of this project, prior to and after placing permanent pavement.
5. All materials and workmanship shall conform to the City Standards and Specifications.
6. Fill shall be compacted with sharpsfoot roller.

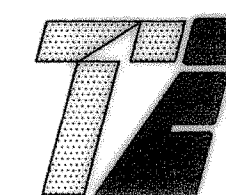
INDEX

| Sheet No. | Description |
|-----------|---------------------------------------|
| 1-3 | Final Plat |
| 4-11 | Paving Plans |
| 12 | Alley Profiles |
| 13 | Drainage Area Map |
| 14 | Inlet Calculation Chart |
| 15-17 | Storm Sewer Plans |
| 18 | Storm Sewer Lateral Profiles |
| 19 | Water & Sanitary Sewer Plan |
| 20 | Sanitary Sewer Profiles |
| 21 | Stormwater Pollution Prevention Plan |
| 22 | Lot Grading Plans |
| 23 | Offsite Sanitary Sewer Plan & Profile |

PREPARED FOR

CENTEX HOMES

2800 Surveyor Boulevard ~ Carrollton, Texas 75006
(972) 417-3562



TIPTON ENGINEERING, INC.

6330 Broadway Blvd. ~ Suite C ~ Garland, Texas 75043 (972) 226-2967

**AS BUILT PLANS
06/08/2001**

The alignment and grade were set on the ground for construction per the plans. The engineer did not verify alignment or grades after construction. We are not aware of any changes or revisions to these plans during construction except as noted.

