

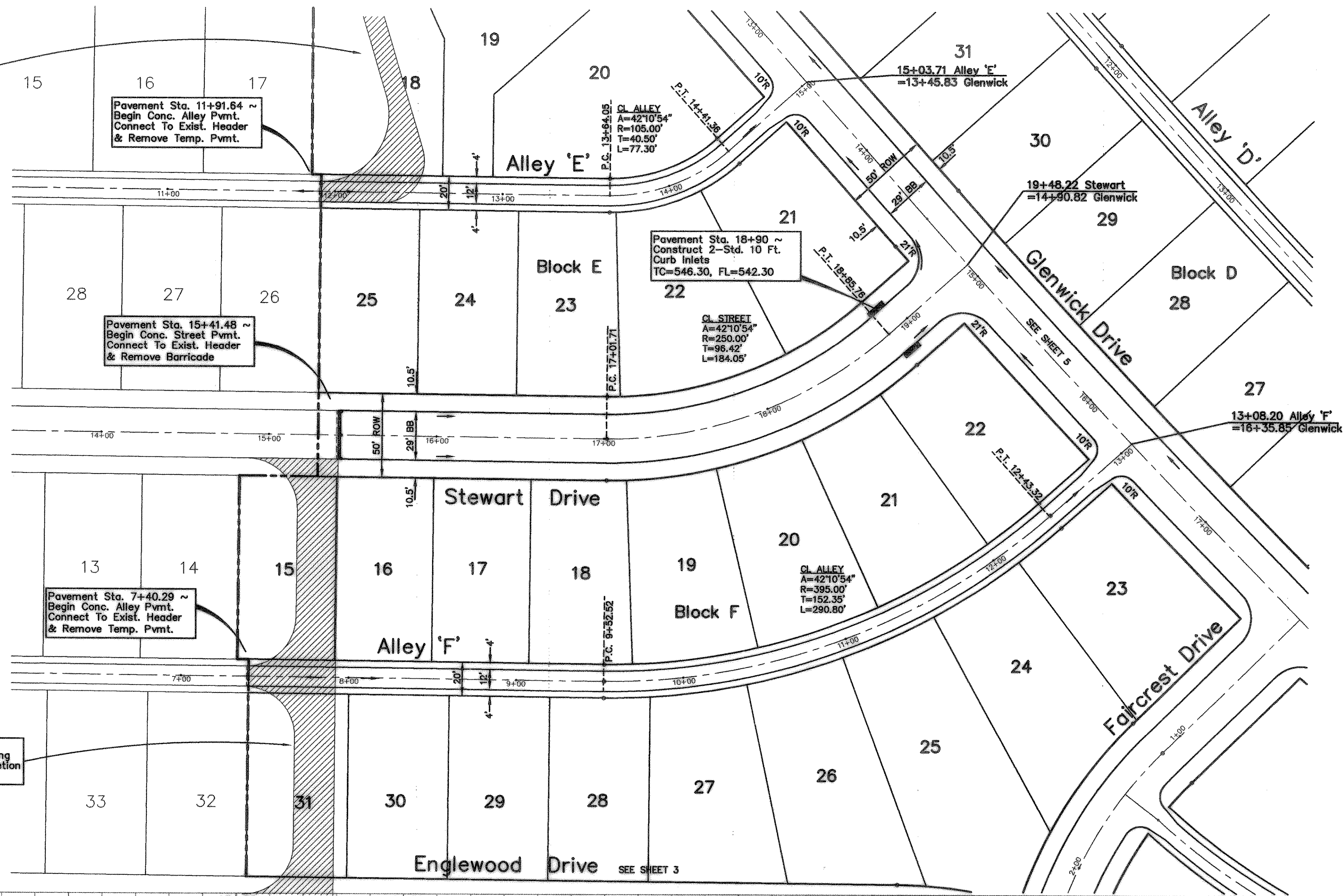
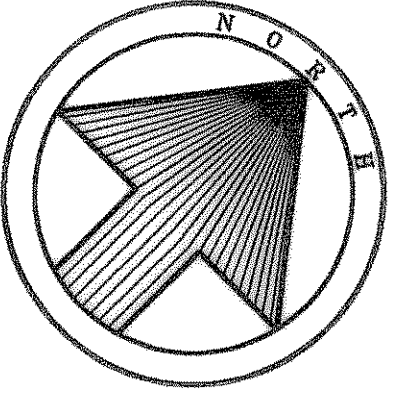
Note:  
Remove & Dispose Of Existing  
Asphalt Paving Upon Completion  
Of New Concrete Pavement.

Pavement Sta. 11+91.64 ~  
Begin Conc. Alley Pmnt.  
Connect To Exist. Header  
& Remove Temp. Pmnt.

Pavement Sta. 15+41.48 ~  
Begin Conc. Street Pmnt.  
Connect To Exist. Header  
& Remove Barricade

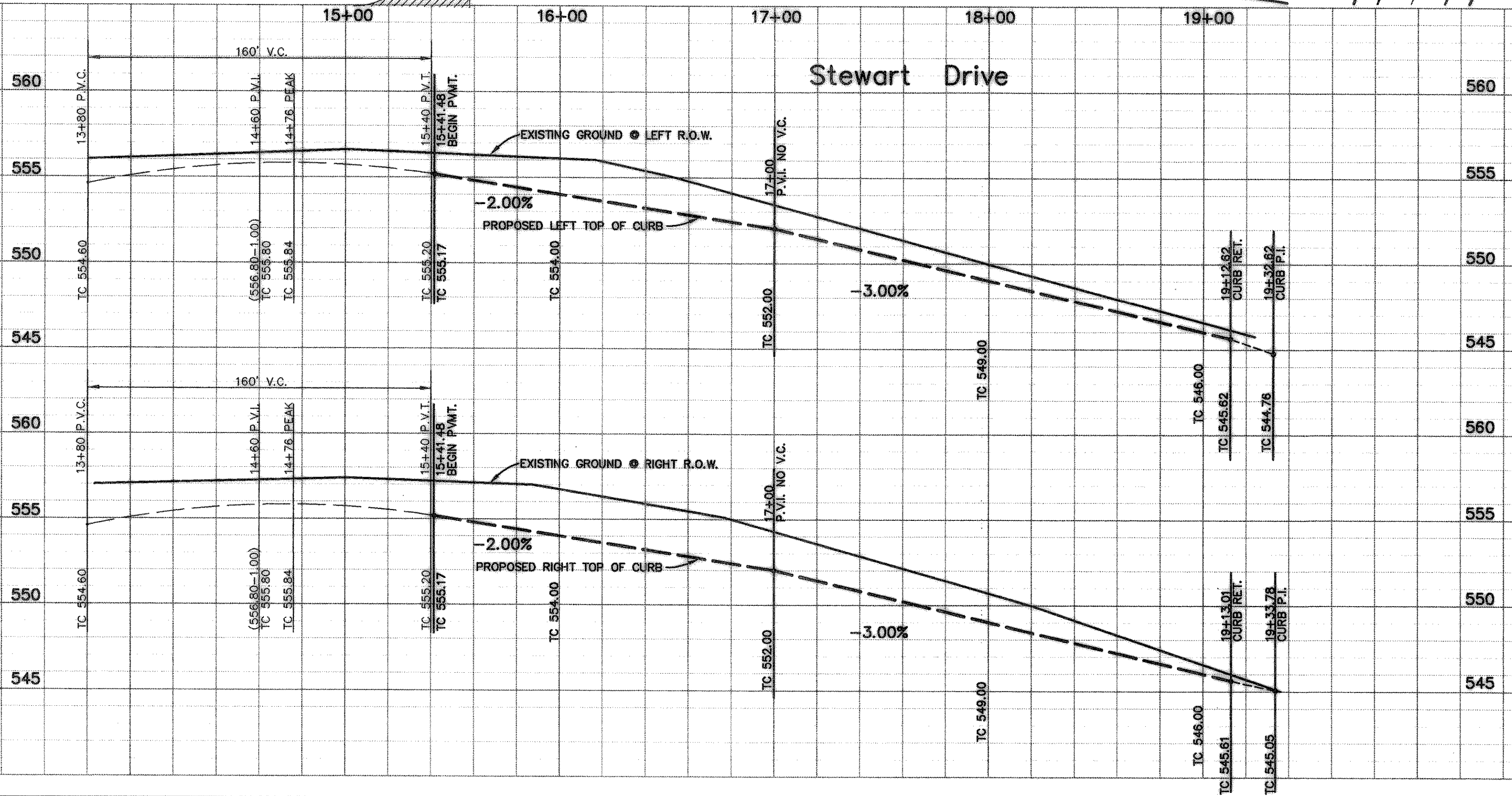
Pavement Sta. 7+40.29 ~  
Begin Conc. Alley Pmnt.  
Connect To Exist. Header  
& Remove Temp. Pmnt.

Note:  
Remove & Dispose Of Existing  
Asphalt Paving Upon Completion  
Of New Concrete Pavement.



Bench Mark 1  
A Standard U.S.C.&G.S. Disk Stamped 'M 929 1946'  
Approx. 1.9 miles southeast along State Hwy. 205  
from Courthouse at Rockwall to bridge at Buffalo  
Creek, at the northwest corner of the concrete  
bridge in the top of the concrete guardrail base  
approx. 17 feet southwest of the centerline of the  
highway, and approx. 3 feet southeast of the northwest  
end of the guardrail base.  
Elevation = 524.65  
Bench Mark 2  
Top of Concrete ROW Marker, approx. 1.6 miles  
southeast along State Hwy. 205 and then approx.  
0.6 miles east along FM 276 to intersection of  
paved road, at fence corner at southwest quadrant  
of intersection.  
Elevation = 543.10

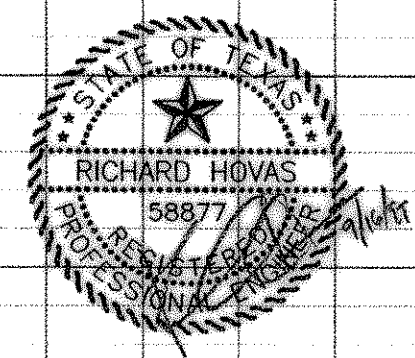
Note!  
Construct Barrier Free Ramps At All  
Intersection As Per City Standards.



AS BUILT PLANS  
06/27/2000

The alignment and grade were set on the ground for construction per the plans. The engineer did not verify alignment or grades after construction. We are not aware of any changes or revisions to these plans during construction except as noted.

Stewart Dr., Alley 'E', Alley 'F'



<b>PAVING PLAN</b>	
MEADOWCREEK ESTATES II	
City Of Rockwall, Texas	
TIPTON ENGINEERING, INC.	
6330 Broadway Blvd. ~ Suite C ~ Garland, Texas 75043	
DESIGN	NO.
DRAWN	FILE
DATE	NOTES
SCALE	
8-98	1"=40'H 1"=5'V
T.E. Inc.	4