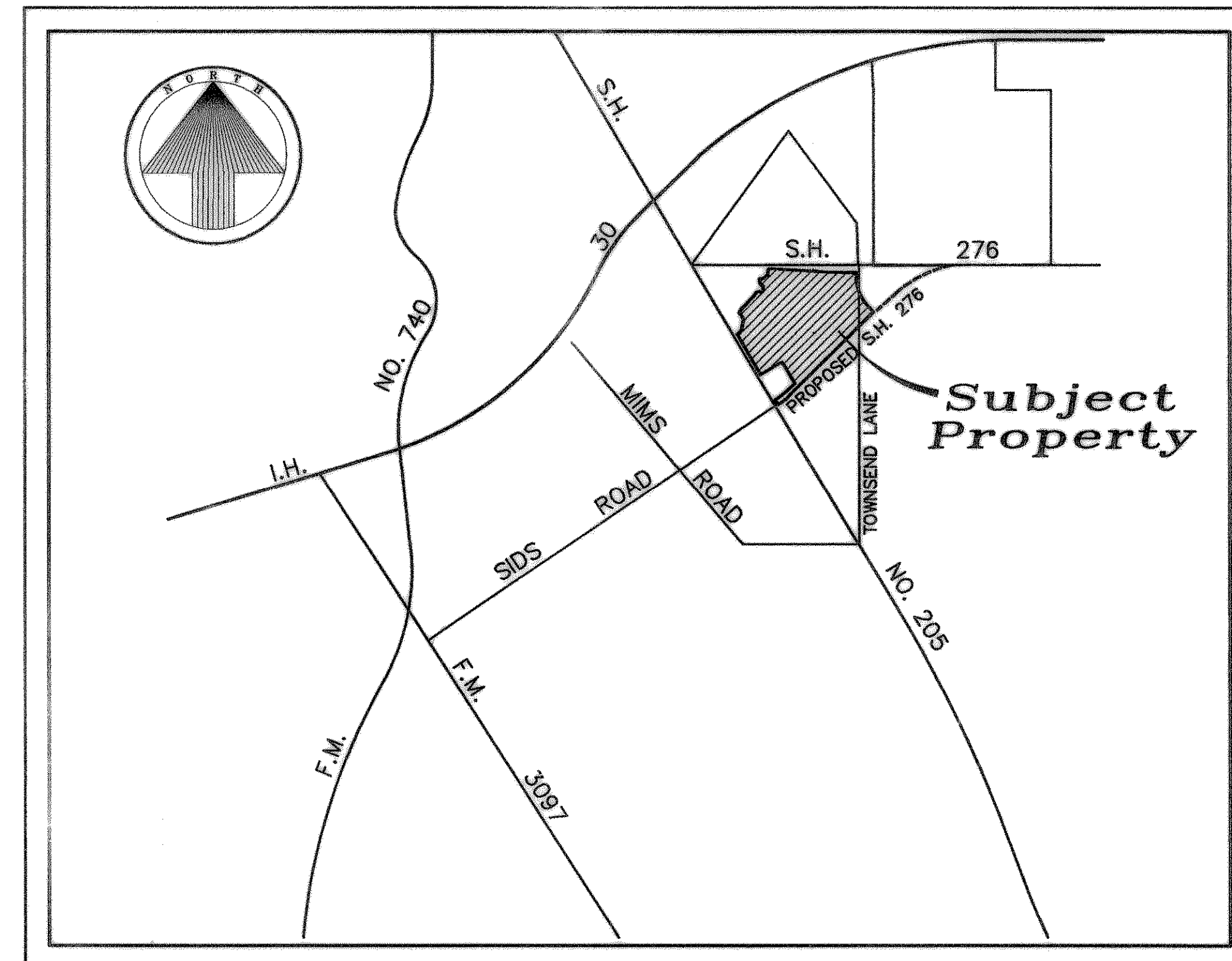


# DEVELOPMENT PLANS

## FOR

# MEADOWCREEK ESTATES II

## CITY OF ROCKWALL, TEXAS



LOCATION MAP  
NOT TO SCALE

**GENERAL NOTES**

1. All street and alleys intersections and connections shall be built by the developer.
2. Excavation from streets to be deposited in low areas to allow proper drainage, except existing creek.
3. All existing ditches, except as noted on drainage plans, are to be filled to conform to surrounding terrain.
4. It will be the responsibility of the developer and/ or the contractor to protect and maintain to proper line and grade all public utilities, manholes, cleanouts, valve boxes, fire hydrants, etc. during the construction of this project, prior to and after placing permanent pavement.
5. All materials and workmanship shall conform to the City Standards and Specifications.

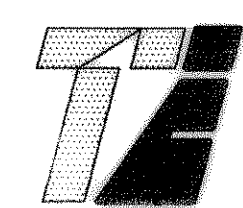
**INDEX**

Sheet No.	Description
1-2	Final Plat
3-10	Paving Plans
11-12	Alley Profiles
13	Drainage Area Map
14	Inlet Calculation Chart
15-16	Storm Sewer Plans
17	Water & Sewer Plan
18	Sanitary Sewer Profiles
19	Stormwater Pollution Prevention Plan
20-21	Lot Grading Plans
22-23	Traffic Control Plan
3-6	Landscape & Screening Plans

PREPARED FOR

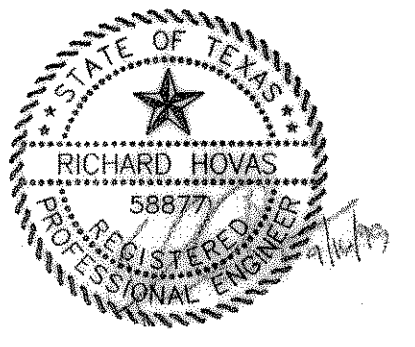
# CENTEX HOMES

2800 Surveyor Boulevard ~ Carrollton, Texas 75006



**TIPTON ENGINEERING, INC.**

6330 Broadway Blvd. ~ Suite C ~ Garland, Texas 75043 (972) 226-2967



MEADOWCREEK ESTATES II

C:\jobs\4174\4174c52.dwg Wed Sep 15 12:22:43 1999 mk