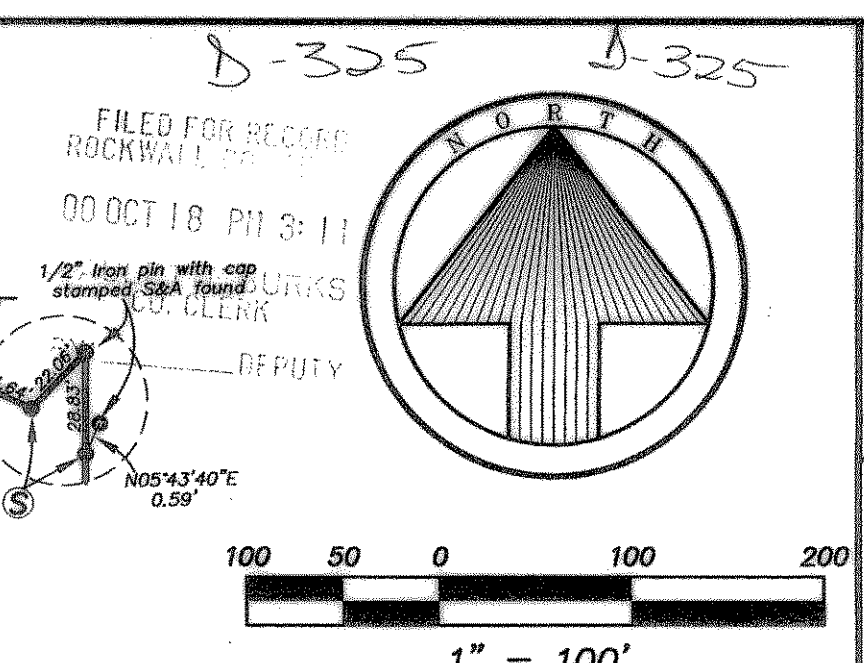
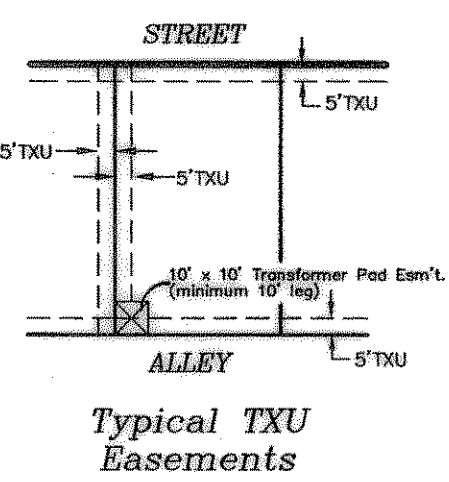


Tipton Eng.

E:\PLATS\14742.dwg Thu Sep 14 10:21:56 2000 GM



Bearings based on the subject tract Special Warranty Deed recorded in Vol. 1422, Pg. 225(DRRCT)

STATE PLANE COORDINATES based on City of Rockwall monument numbers 2,3,5 and 7.

CURVE DATA

CURVE	RADIUS	DELTA	TANGENT	LENGTH	CHORD	BEARING
C-1	40.00'	80.00°00'	40.00'	56.57'	56.57'	S 00°34'51" W
C-2	225.00'	34°44'06"	70.40'	136.46'	136.46'	N 77°32'41" W
C-3	50.00'	156°11'10"	23.12'	136.30'	97.85'	S 06°46'38" W
C-4	75.00'	32°36'48"	22.18'	43.13'	42.54'	S 29°06'27" W
C-5	40.00'	80.00°00'	40.00'	62.83'	62.83'	N 89°53'57" W
C-6	40.00'	77°26'16"	32.07'	54.06'	50.04'	S 64°53'31" W
C-7	95.00'	31°14'58"	26.91'	92.44'	92.44'	N 89°53'57" W
C-8	405.00'	10°25'57"	36.97'	73.74'	73.64'	S 82°14'17" W
C-9	385.00'	11°41'58"	46.23'	92.44'	92.44'	N 89°53'57" W
C-10	115.00'	163°24'44"	19.12'	37.89'	37.72'	N 34°58'47" W
C-11	85.00'	42°10'54"	36.84'	68.84'	68.37'	S 54°29'24" W
C-12	1030.00'	30°33'41"	281.40'	548.40'	542.91'	N 26°24'46" W
C-13	1080.00'	05°38'25"	53.19'	106.30'	106.26'	N 14°12'00" W
C-14	120.00'	11°36'52"	12.00'	24.30'	24.28'	S 84°57'26" W
C-15	100.00'	11°36'52"	10.17'	20.27'	20.24'	S 84°57'26" W
C-16	40.00'	80.00°00'	40.00'	62.83'	62.83'	N 89°53'57" W
C-17	5919.65'	0°52'40"	45.34'	90.68'	90.68'	S 89°10'10" W
C-18	40.00'	89°25'58"	36.45'	59.12'	53.89'	S 03°14'24" W
C-19	40.00'	89°49'18"	48.98'	77.51'	69.96'	N 27°18'56" W
C-20	1080.00'	05°38'25"	53.19'	106.30'	106.26'	N 14°12'00" W
C-21	120.00'	11°36'52"	12.00'	24.30'	24.28'	S 84°57'26" W
C-22	100.00'	11°36'52"	10.17'	20.27'	20.24'	S 84°57'26" W
C-23	1080.00'	05°38'25"	53.19'	106.30'	106.26'	N 14°12'00" W
C-24	100.00'	11°36'52"	12.00'	24.30'	24.28'	S 84°57'26" W
C-25	1080.00'	05°38'25"	53.19'	106.30'	106.26'	N 14°12'00" W
C-26	275.00'	19°20'01"	46.84'	92.80'	92.36'	S 81°11'00" W
C-27	225.00'	19°20'01"	46.84'	92.80'	92.36'	S 81°11'00" W
C-28	250.00'	19°11'48"	42.28'	83.76'	83.37'	S 81°16'06" W
C-29	1080.00'	05°38'25"	53.19'	106.30'	106.26'	N 14°12'00" W
C-30	275.00'	19°20'01"	46.84'	92.80'	92.36'	S 81°11'00" W
C-31	225.00'	19°20'01"	46.84'	92.80'	92.36'	S 81°11'00" W
C-32	250.00'	19°11'48"	42.28'	83.76'	83.37'	S 81°16'06" W
C-33	1080.00'	05°38'25"	53.19'	106.30'	106.26'	N 14°12'00" W
C-34	275.00'	19°20'01"	46.84'	92.80'	92.36'	S 81°11'00" W
C-35	225.00'	19°20'01"	46.84'	92.80'	92.36'	S 81°11'00" W
C-36	250.00'	19°11'48"	42.28'	83.76'	83.37'	S 81°16'06" W
C-37	1080.00'	05°38'25"	53.19'	106.30'	106.26'	N 14°12'00" W
C-38	275.00'	19°20'01"	46.84'	92.80'	92.36'	S 81°11'00" W
C-39	225.00'	19°20'01"	46.84'	92.80'	92.36'	S 81°11'00" W
C-40	250.00'	19°11'48"	42.28'	83.76'	83.37'	S 81°16'06" W
C-41	1080.00'	05°38'25"	53.19'	106.30'	106.26'	N 14°12'00" W
C-42	275.00'	19°20'01"	46.84'	92.80'	92.36'	S 81°11'00" W
C-43	225.00'	19°20'01"	46.84'	92.80'	92.36'	S 81°11'00" W
C-44	250.00'	19°11'48"	42.28'	83.76'	83.37'	S 81°16'06" W
C-45	1080.00'	05°38'25"	53.19'	106.30'	106.26'	N 14°12'00" W
C-46	275.00'	19°20'01"	46.84'	92.80'	92.36'	S 81°11'00" W
C-47	225.00'	19°20'01"	46.84'	92.80'	92.36'	S 81°11'00" W
C-48	250.00'	19°11'48"	42.28'	83.76'	83.37'	S 81°16'06" W
C-49	1080.00'	05°38'25"	53.19'	106.30'	106.26'	N 14°12'00" W
C-50	275.00'	19°20'01"	46.84'	92.80'	92.36'	S 81°11'00" W
C-51	225.00'	19°20'01"	46.84'	92.80'	92.36'	S 81°11'00" W
C-52	250.00'	19°11'48"	42.28'	83.76'	83.37'	S 81°16'06" W
C-53	1080.00'	05°38'25"	53.19'	106.30'	106.26'	N 14°12'00" W
C-54	275.00'	19°20'01"	46.84'	92.80'	92.36'	S 81°11'00" W
C-55	225.00'	19°20'01"	46.84'	92.80'	92.36'	S 81°11'00" W
C-56	250.00'	19°11'48"	42.28'	83.76'	83.37'	S 81°16'06" W
C-57	1080.00'	05°38'25"	53.19'	106.30'	106.26'	N 14°12'00" W
C-58	275.00'	19°20'01"	46.84'	92.80'	92.36'	S 81°11'00" W
C-59	225.00'	19°20'01"	46.84'	92.80'	92.36'	S 81°11'00" W
C-60	250.00'	19°11'48"	42.28'	83.76'	83.37'	S 81°16'06" W
C-61	1080.00'	05°38'25"	53.19'	106.30'	106.26'	N 14°12'00" W
C-62	275.00'	19°20'01"	46.84'	92.80'	92.36'	S 81°11'00" W
C-63	225.00'	19°20'01"	46.84'	92.80'	92.36'	S 81°11'00" W
C-64	250.00'	19°11'48"	42.28'	83.76'	83.37'	S 81°16'06" W
C-65	1080.00'	05°38'25"	53.19'	106.30'	106.26'	N 14°12'00" W
C-66	275.00'	19°20'01"	46.84'	92.80'	92.36'	S 81°11'00" W
C-67	225.00'	19°20'01"	46.84'	92.80'	92.36'	S 81°11'00" W
C-68	250.00'	19°11'48"	42.28'	83.76'	83.37'	S 81°16'06" W
C-69	1080.00'	05°38'25"	53.19'	106.30'	106.26'	N 14°12'00" W
C-70	275.00'	19°20'01"	46.84'	92.80'	92.36'	S 81°11'00" W
C-71	885.00'	02°14'24"	17.30'	34.60'	34.60'	N 01°16'28" W

205/276 INVESTMENT COMPANY, LTD.
 TRACT 2
 Vol. 1062, Pg. 284

LEGEND

(F) = 1/2" iron pin found

(S) = 1/2" iron pin with cap stamped "GM RPLS 4396" set

(CM) = Control Monument

TERRELL ROAD
 (variable width ROW)

REASON FOR THIS AMENDED PLAT IS TO REVISE THE SHOWN SIDE BUILDING LINE OF LOTS 1 and 8, BLOCK H and LOT 50, BLOCK A.

AMENDED
FINAL PLAT
MEADOWCREEK ESTATES PHASE II
 JOSEPH CADLE SURVEY, ABSTRACT NO. 65
 CITY OF ROCKWALL, ROCKWALL COUNTY, TEXAS

OWNERS
CENTEX HOMES
 2800 Surveyor Boulevard ~ Carrollton, Texas 75006
 972.417.3662

205/276 INVESTMENT COMPANY, LTD.
 107 West Main St. ~ POB 1080 ~ Decatur, Texas 76224
 940.627.0900

ENGINEERING/SURVEYING/PLANNING
TIPTON ENGINEERING, INC.
 6330 Broadway Blvd. ~ Suite C ~ Garland, Texas 75043
 972.226.2967