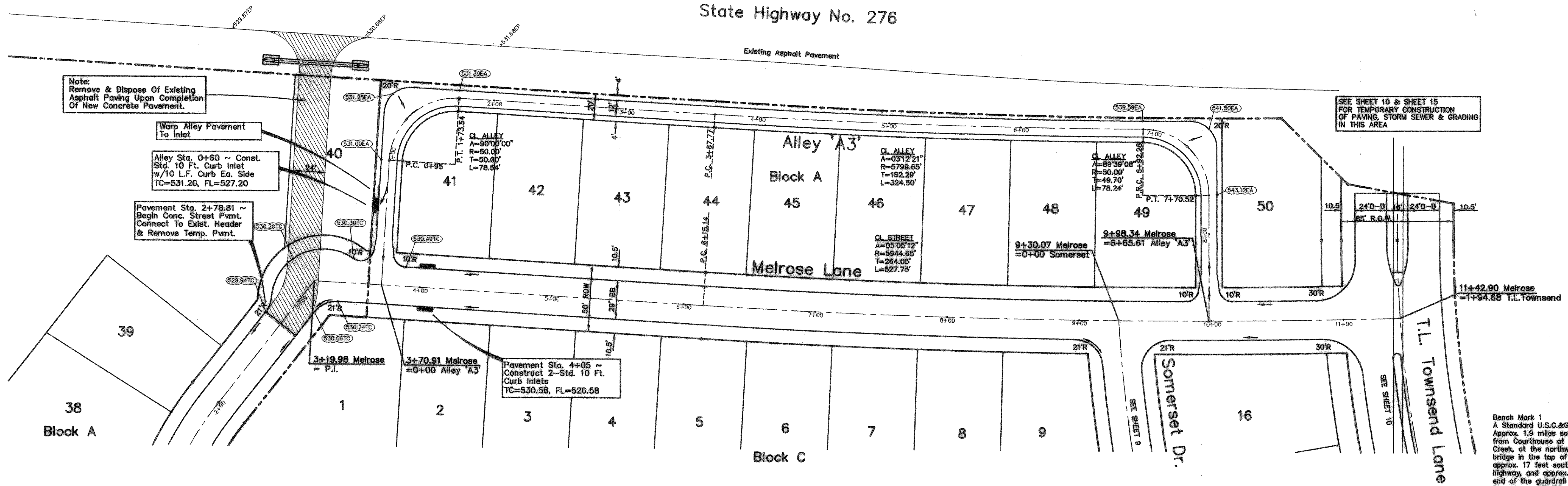


State Highway No. 276

Existing Asphalt Pavement



Note:  
Remove & Dispose Of Existing  
Asphalt Paving Upon Completion  
Of New Concrete Pavement.

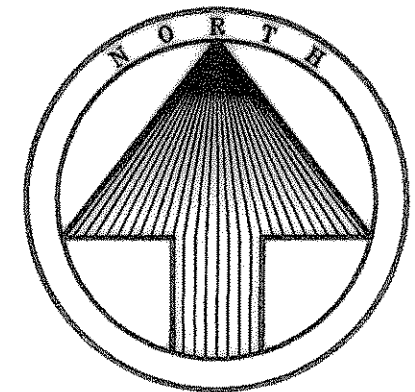
Warp Alley Pavement  
To Inlet

Alley Sta. 0+60 ~ Const.  
Std. 10 Ft. Curb Inlet  
w/10 L.F. Curb Ea. Side  
TC=531.20, FL=527.20

Pavement Sta. 2+78.81 ~  
Begin Conc. Street Pwmt.  
Connect To Exist. Header  
& Remove Temp. Pwmt.

Pavement Sta. 4+05 ~  
Construct 2-Std. 10 Ft.  
Curb Inlets  
TC=530.58, FL=526.58

SEE SHEET 10 & SHEET 15  
FOR TEMPORARY CONSTRUCTION  
OF PAVING, STORM SEWER & GRADING  
IN THIS AREA

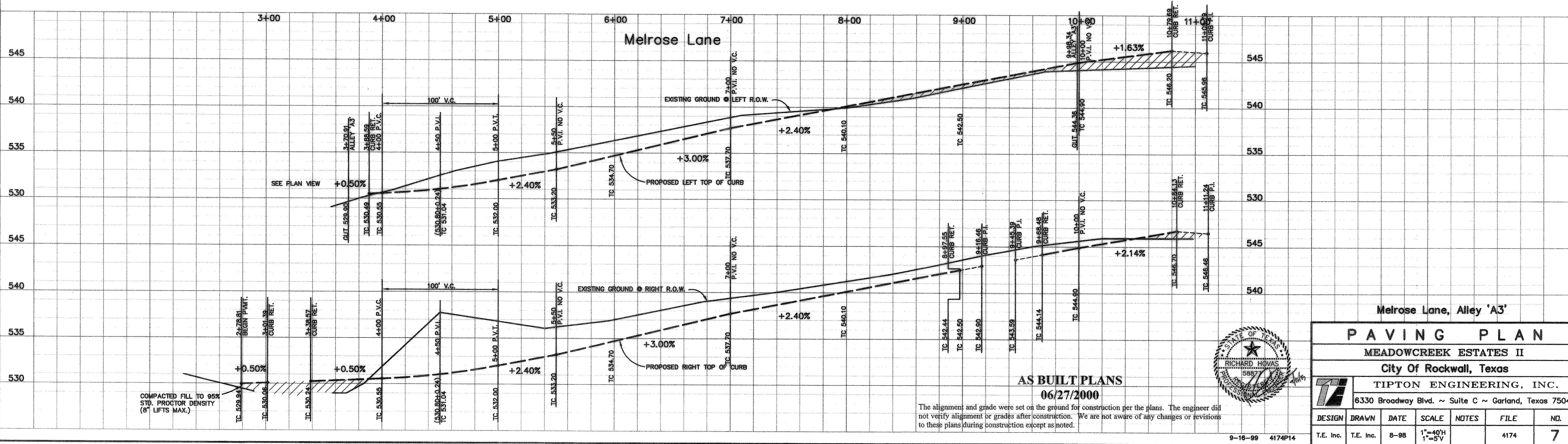


Bench Mark 1  
A Standard U.S.C.&G.S. Disk Stamped 'M 929 1946'  
Approx. 1.9 miles southeast along State Hwy. 205  
from Courthouse at Rockwall to bridge at Buffalo  
Creek, at the northwest corner of the concrete  
bridge in the top of the concrete guardrail base  
approx. 17 feet southwest of the centerline of the  
highway, and approx. 3 feet southeast of the northwest  
end of the guardrail base.  
Elevation = 524.65  
Bench Mark 2  
Top of Concrete ROW Marker, approx. 1.6 miles  
southeast along State Hwy. 205 and then approx.  
0.6 miles east along FM 276 to intersection of  
paved road, at fence corner at southwest quadrant  
of intersection.  
Elevation = 543.10

**CAUTION !!!**  
EXISTING UTILITIES

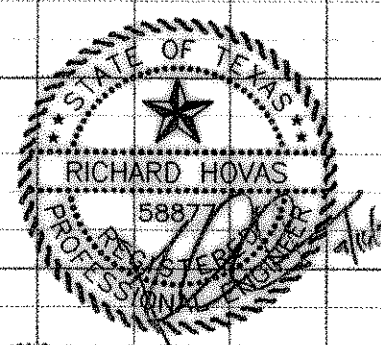
EXISTING UTILITIES AND UNDERGROUND FACILITIES INDICATED  
ON THESE PLANS HAVE BEEN LOCATED FROM REFERENCE  
INFORMATION. IT SHALL BE THE RESPONSIBILITY OF THE  
CONTRACTOR TO VERIFY BOTH HORIZONTALLY AND VERTICALLY  
THE LOCATION OF ALL EXISTING UTILITIES AND UNDERGROUND  
FACILITIES PRIOR TO CONSTRUCTION, TO TAKE NECESSARY  
PRECAUTIONS IN ORDER TO PROTECT ALL FACILITIES  
ENCOUNTERED. THE CONTRACTOR SHALL PRESERVE AND  
PROTECT ALL EXISTING UTILITIES FROM DAMAGE DURING  
CONSTRUCTION.

Note!  
Construct Barrier Free Ramps At All  
Intersection As Per City Standards.



AS BUILT PLANS  
06/27/2000

The alignment and grade were set on the ground for construction per the plans. The engineer did not verify alignment or grades after construction. We are not aware of any changes or revisions to these plans during construction except as noted.



Melrose Lane, Alley 'A3'						
<b>PAVING PLAN</b>						
MEADOWCREEK ESTATES II						
City Of Rockwall, Texas						
TIPTON ENGINEERING, INC.						
6330 Broadway Blvd. ~ Suite C ~ Garland, Texas 75043						
DESIGN	DRAWN	DATE	SCALE	NOTES	FILE	NO.
T.E. Inc.	T.E. Inc.	8-98	1"=40'H 1"=5'V		4174	7